



SAS

SPECIAL ALLOY STEEL SCREWS

Japanese Material, Made in Taiwan

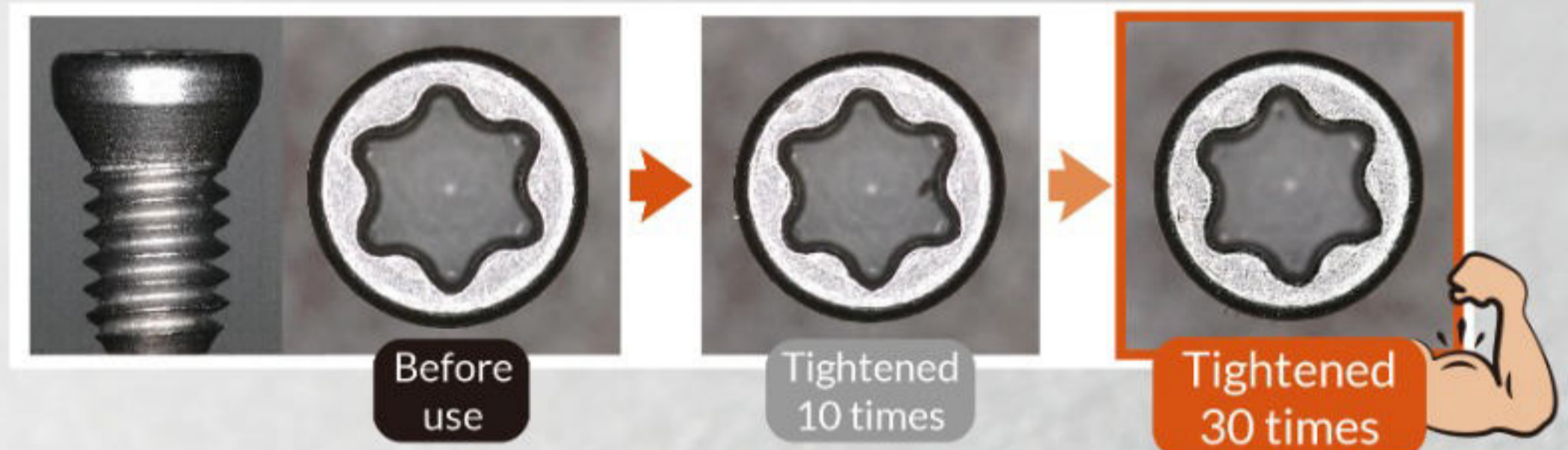


- High torque
- High tensile strength
- Excellent rust resistance

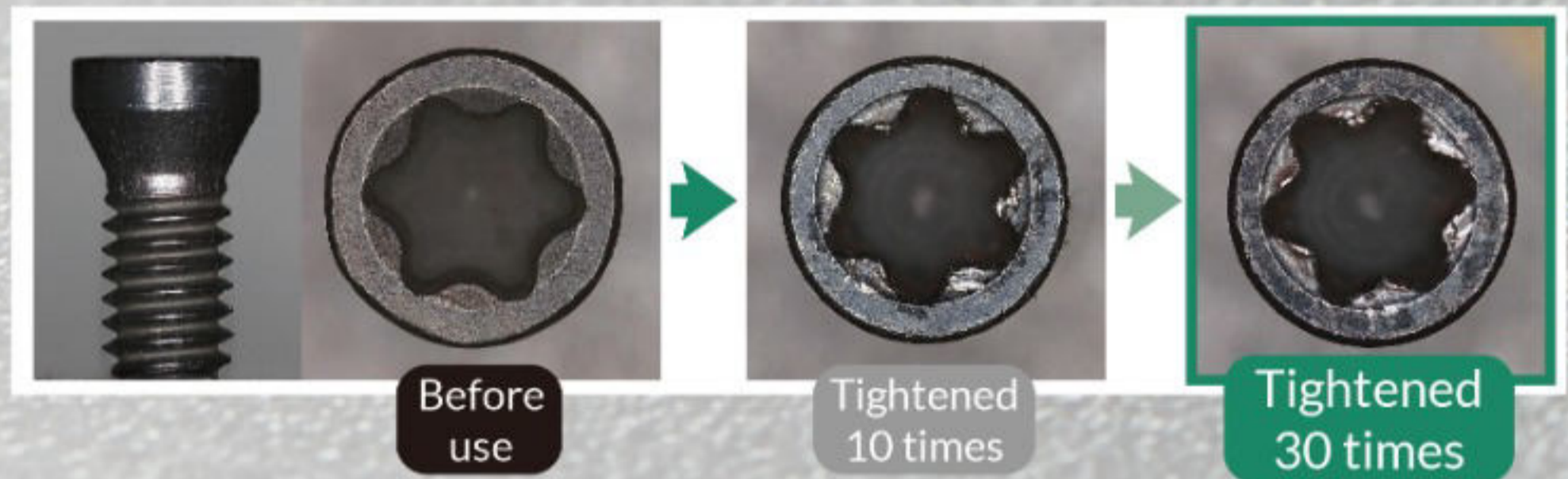
Special Alloy Steel tensile strength is 33% higher than standard grade 12.9 screws

Special Alloy Steel ISO strength grade 16.9
General Alloy Steel ISO strength grade 12.9

Special Alloy Steel
Wear-resistant



General Alloy Steel
Severe wear



Salt Spray / Acid Rain Test Comparison				
Material	Salt Spray Test	Acid Rain Test	Hardness HRC°	Tensile N/mm ²
Special Alloy Steel	8000H~12000H and above	100 cycles	56°~57°	1560~1650
SCM #435	Below 50H	2 cycles	36°~41°	1254~1331
SUS#420 J2	Below 150H	3 cycles	49°~53°	1390~1470