

DMG MORI

MACHINE TOOLING

PRODUCT CATALOG

AMERICAN MADE

Keep Up With The Times & Proactive Advanced Manufacturing

Proactive Advanced Manufacturing

Chain Headway was founded in 1992 to develop and produce cutting tools and accessories for CNC machining centers. Our company has developed over the years to provide a stable production environment with advanced R&D and manufacturing capabilities.

This is designed to provide cutting edge products and more efficient materials processing solutions for various types of industries. Our investment in R&D helps us to deliver the latest materials processing solutions for intelligent manufacturing to our customers.

- We are partnered with the University of Science & Technology developing a group of future Cutting professionals.
- We have a new 8250 square meter production facility which combines our office buildings with automated production facilities.
- Our production and inspection equipment is sourced from Japan and Europe to maintain the best possible quality and efficiency.

Industry processing challenges are constantly evolving with the development of high temperature alloys and composite materials. Our management team is proactively addressing these evolving materials processing requirements to rapidly develop & provide customers with the latest material processing solutions and the best possible customer service.



OUR PRODUCTS

STATIC BOLT-ON TOOL BLOCKS



Chain Headway offers an extensive range of Static tool holders for DMG Mori, Doosan, HAAS, Mazak, Okuma, and many other machine tool manufacturers. Our static toolholders are individually designed for each turning center and precision manufactured, ensuring optimal performance, and enabling you to harness the full potential of your machine.

LIVE TOOLING

Chain Headway's comprehensive product range of live tools are precision manufactured, ensuring optimal performance for your turning center. We prioritize the use of high-performance components in our live tooling, enabling you to achieve the highest efficiency from your machine tool. Chain Headway offers live tooling for DMG Mori, Doosan, HAAS, Mazak, Okuma, and many other machine tool manufacturers.



VDI TOOL HOLDERS



Chain Headway provides a complete line of Static VDI tool holders according to DIN 69880 standards. Our product range is available in 16mm, 20mm, 25mm, 30mm, 40mm, 50mm, 60mm and 80mm VDI shank sizes. Each tool holder is made from high strength alloy steel, hardened, black oxide coated and precision ground.

Leader in CNC Lathe Tooling

TOOL HOLDER BUSHINGS/SLEEVES



Chain Headway has been delivering tool holder bushings and sleeves to customers worldwide. Our product line is available in 22+ different styles in both standard inch and metric sizes. Each tool holder bushing/sleeve is manufactured using from high strength alloy steel, hardened, black oxide coated and precision ground.



TAILOR MADE TOOL HOLDERS

Chain Headway's build-a-tool program allows you to completely customize any tool holder in our product offering to your specialized dimensions/ application. From your conception, to an approved drawing, to being manufactured and delivered, you will be impressed by our quality and service.



In addition, Chain Headway has a wide-ranging database of machine-related solutions for many well-known machine tool manufacturers.



THE CHAIN HEADWAY QUALITY DIFFERENCE

Quality is not just an important part of our everyday operations; it's embedded into them. When you see the Chain Headway name on our products it is a product you can trust. All our tooling is manufactured with the latest machine tool technology run by our expert machinists.

Our underlying standard of quality is not only in our products but also in our customer service. You as the customer are the single most important aspect of our business and we will aim to go above and beyond in order to accommodate your needs.

編碼原則

動力刀座

例: LC-VDI-01-30 25 OC - DM - NL2000

| 品牌CC | 刀座類型 | 刀座樣式 | 刀柄心軸尺寸 | 筒夾樣式 | 出水方式 | 機械廠牌 | 機台型號 | 備註 |
|------|------|----------------|----------|-----------|---------|-------------|--------|------------------|
| LC | VDI | 01 | 30 | 25 | OC | DM | NL2000 | |
| | | 01 軸向0° | 20 VDI20 | 11 ER11 | OC 外部給水 | DM DMG MORI | | 尺寸差異 |
| | | 02 OFFSET.軸向偏心 | 25 VDI25 | 16 ER16 | IC 中心出水 | MA MAZAK | | 空白 無備註 |
| | | 03 軸向0°雙輸出 | 30 VDI30 | 20 ER20 | | GW GOOD WAY | | 1 DIN1809 |
| | | 11 徑向90°(R) | 40 VDI40 | 25 ER25 | | | | 2 DIN5480 |
| | | 12 徑向90°(L) | 60 VDI50 | 32 ER32 | | | | 3 DIN5482 |
| | | 13 徑向後縮(R) | 65 VDI60 | 40 ER40 | | | | 4 TOME |
| | | 14 徑向後縮(L) | | 50 ER50 | | | | S9 最高轉速9000 |
| | | 15 徑向90°(R)雙輸出 | | C3 PSC3 | | | | S6 最高轉速6000 |
| | | 16 徑向90°(L)雙輸出 | | C4 PSC4 | | | | DBY Y軸向裝2只 刀具 |
| | | 17 徑向後縮(R)雙輸出 | | C5 PSC5 | | | | |
| | | 18 徑向後縮(L)雙輸出 | | B22 FMB22 | | | | |
| | | 21 可調角度 | | B27 FMB27 | | | | |
| | | 31 其他 | | T40 BT40 | | | | |

動力刀座

例: LC-BMT-03-4025OC-61.5-DM-NZ2000

| 品牌CC | 刀座類型 | 刀座樣式 | 刀柄心軸尺寸 | 接口樣式 | 出水方式 | 備註 | 機械廠牌 | 機台型號 |
|------|------|----------------|----------|-----------|---------|-----------|-------------|--------|
| LC | BMT | 03 | 40 | 25 | OC | 61.5 | DM | NZ2000 |
| | | 01 軸向0° | 40 BMT40 | 20 ER20 | OC 外部給水 | 數值 尺寸差異標示 | DS 斗山 | |
| | | 02 OFFSET.軸向偏心 | 45 BMT45 | 25 ER25 | IC 中心出水 | SP 副主軸用 | NM 中村權 | |
| | | 03 軸向0°雙輸出 | 50 BMT50 | 32 ER32 | | 其他 | DM DMG MORI | |
| | | 11 徑向90°(R) | 55 BMT55 | 40 ER40 | | | MA MAZAK | |
| | | 12 徑向90°(L) | 60 BMT60 | 50 ER50 | | | GW GOOD WAY | |
| | | 13 徑向後縮(R) | 65 BMT65 | C3 PSC3 | | | OK OKUMA | |
| | | 14 徑向後縮(L) | 70 BMT70 | C4 PSC4 | | | | |
| | | 15 徑向90°(R)雙輸出 | 75 BMT75 | C5 PSC5 | | | | |
| | | 16 徑向90°(L)雙輸出 | 80 BMT80 | B22 FMB22 | | | | |
| | | 17 徑向後縮(R)雙輸出 | | B27 FMB27 | | | | |
| | | 18 徑向後縮(L)雙輸出 | | T40 BT40 | | | | |
| | | 21 可調角度 | | | | | | |
| | | 31 其他 | | | | | | |

固定刀座

例: LC-DM-NZ2000-25-H7530-DB

| 品牌CC | 機械廠牌 | 機台型號 | 刀具尺寸 | 中心高 | 備註 |
|------|-------------|--------|------------|------------|--------------|
| LC | DM | NL2000 | 25 | H7530 | DB |
| | DM DMG MORI | | 0 | 空白 外徑車刀 | 空白 無備註 |
| | MA MAZAK | | 25 | 第一 內孔中心高75 | DB 裝2只刀具 |
| | GW GOOD WAY | | 32 | 第二 內孔高30 | 4P 裝4只刀具 |
| | OK OKUMA | | 1"=25.4 | | FA 端面 |
| | | | 3/4"=19.05 | | EX 加長型 |
| | | | | | ST 刀座分離式 |
| | | | | | SP 副主軸用 |
| | | | | | Y Y尺寸不同 |
| | | | | | YZ YZ尺寸不同 |
| | | | | | CU 切斷刀用 |
| | | | | | CUB 切斷刀板用 |
| | | | | | DBY Y軸向裝2只刀具 |
| | | | | | RE 反向刀 |
| | | | | | M/SP 主與副主 |
| | | | | | DR 鑽孔用 |

CODING PRINCIPLES

DRIVEN TOOL HOLDERS EX: LC-VDI-01-3025OC-DM-NL2000

| | | | | | | | | |
|-----------|------------------|------------------------------|--------------------|--------------|---------------------|---------------|-------------------------|------------------|
| LC | VDI | 01 | 30 | 25 | OC | DM | NL2000 | |
| Brand: CC | Tool Holder Type | Tool Holder Style | Spindle Shaft Size | Collet Style | Coolant Type | Machine Brand | Machine Model | Notes |
| | 01 | STRAIGHT | 20 VDI20 | 11 ER11 | OC External Coolant | DM DMG MORI | | Size Variations |
| | 02 | STRAIGHT OFFSET | 25 VDI25 | 16 ER16 | | MA MAZAK | | Blank No Remarks |
| | 03 | DOUBLE TRAIHT OFFSET | 30 VDI30 | 20 ER20 | IC INTERNAL COOLANT | GW GOOD WAY | | 1 DIN1809 |
| | 11 | RIGHT ANGLE(R) | 40 VDI40 | 25 ER25 | | | | 2 DIN5480 |
| | 12 | RIGHT ANGLE(L) | 60 VDI50 | 32 ER32 | | | 3 DIN5482 | |
| | 13 | OFFSET RIGHT ANGLE(R) | 65 VDI60 | 40 ER40 | | | 4 TOME | |
| | 14 | OFFSET RIGHT ANGLE(L) | | 50 ER50 | | | S9 Max Speed 9000 RPM | |
| | 15 | DOUBLE RIGHT ANGLE(R) | | C3 Capto C3 | | | S6 Max Speed 6000 RPM | |
| | 16 | DOUBLE RIGHT ANGLE(L) | | C4 Capto C4 | | | DBY DOUBLE OLDER Y-AXIS | |
| | 17 | DOUBLE OFFSET RIGHT ANGLE(R) | | C5 Capto C5 | | | | |
| | 18 | DOUBLE OFFSET RIGHT ANGLE(L) | | B22 FMB22 | | | | |
| | 21 | Adjustable Angle | | B27 FMB27 | | | | |
| | 31 | Others | | T40 BT40 | | | | |

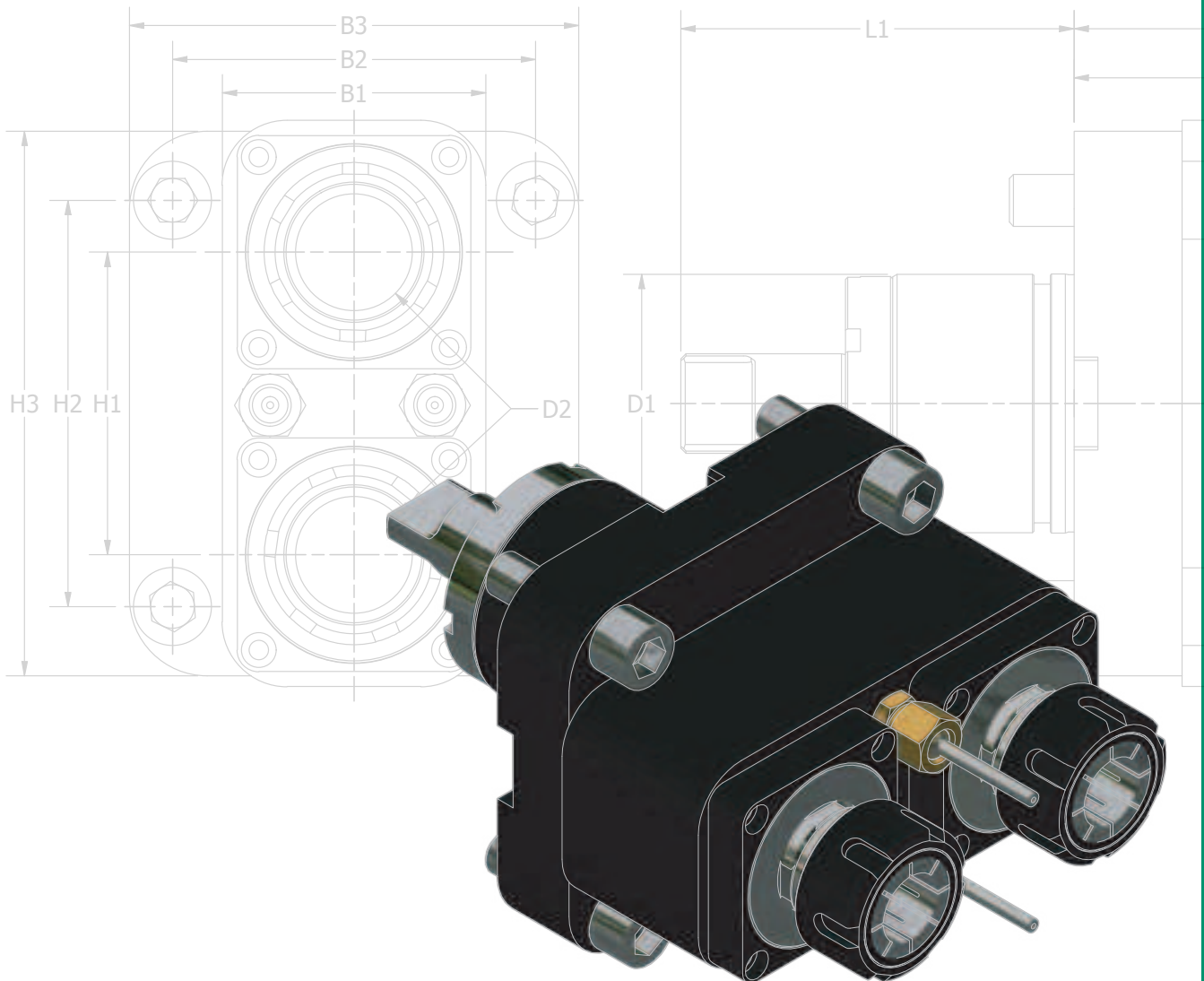
DRIVEN TOOL HOLDER EX: LC-BMT-03-4025OC-61.5-DM-NZ2000

| | | | | | | | | |
|-----------|------------------|------------------------------|--------------------|--------------|---------------------|----------------------------------|------------------|---------------|
| LC | BMT | 03 | 40 | 25 | OC | 61.5 | DM | NZ2000 |
| Brand: CC | Tool Holder Type | Tool Holder Style | Spindle Shaft Size | Collet Style | Coolant Type | Notes | Machine Brand | Machine Model |
| | 01 | STRAIGHT | 40 BMT40 | 20 ER20 | OC External Coolant | Values Size Variation Indicators | DS DOOSAN | |
| | 02 | STRAIGHT OFFSET | 45 BMT45 | 25 ER25 | | | NM NAKAMURA-TOME | |
| | 03 | DOUBLE TRAIHT OFFSET | 50 BMT50 | 32 ER32 | IC INTERNAL COOLANT | SP For Sub-Spindle | DM DMG MORI | |
| | 11 | RIGHT ANGLE(R) | 55 BMT55 | 40 ER40 | | | MA MAZAK | |
| | 12 | RIGHT ANGLE(L) | 60 BMT60 | 50 ER50 | | | GW GOOD WAY | |
| | 13 | OFFSET RIGHT ANGLE(R) | 65 BMT65 | C3 Capto C3 | | | OK OKUMA | |
| | 14 | OFFSET RIGHT ANGLE(L) | 70 BMT70 | C4 Capto C4 | | | | |
| | 15 | DOUBLE RIGHT ANGLE(R) | 75 BMT75 | C5 Capto C5 | | | | |
| | 16 | DOUBLE RIGHT ANGLE(L) | 80 BMT80 | B22 FMB22 | | | | |
| | 17 | DOUBLE OFFSET RIGHT ANGLE(R) | | B27 FMB27 | | | | |
| | 18 | DOUBLE OFFSET RIGHT ANGLE(L) | | T40 BT40 | | | | |
| | 21 | Adjustable Angle | | | | | | |
| | 31 | Others | | | | | | |

FIXED TOOL BLOCKS EX: LC-DM-NZ2000-25-H7530-DB

| | | | | | |
|-----------|---------------|---------------|------------|---|--|
| LC | DM | NL2000 | 25 | H7530 | DB |
| Brand: CC | Machine Brand | Machine Model | Tool Size | Center Height | Notes |
| | DM DMG MORI | | 0 | Blank External Turning Tool | Blank No Remarks |
| | MA MAZAK | | 25 | | First Inner Bore Center Height ex : 75mm |
| | GW GOOD WAY | | 32 | Second Inner Bore Center Height ex : 30mm | 4P 4 POSITION |
| | OK OKUMA | | 1"=25.4 | | FA FACE |
| | | | 3/4"=19.05 | | EX EXTENDED |
| | | | | | ST SPLIT |
| | | | | | SP For Sub-Spindle |
| | | | | | Y Different Y Dimensions |
| | | | | | YZ Different YZ Dimensions |
| | | | | | CU CUT OFF |
| | | | | | CUB CUT OFF BLAND |
| | | | | | DBY DOUBLE HOLDER Y-AXIS |
| | | | | | RE Reverse Tool |
| | | | | | M/SP Main and Sub Spindle |
| | | | | | DR For Drilling |

DMG MORI



Click on sections below to jump to that page.

| | |
|-----------------------|-------|
| NZ2000 | pg 8 |
| NL3000 | pg 18 |
| MSL150 | pg 32 |
| MSL20/30 | pg 37 |
| MSL35 | pg 48 |
| MSL403 | pg 52 |
| MSL603 | pg 56 |
| MSL603MC | pg 60 |

DMG MORI NZ2000 MACHINE CONNECTIONS

COMPATIBLE MACHINES

ALX 1500-2500 MC/Y/SY

CLX 450, ecoTurn 450 (BMT40)

DuraTurn 2050, 2550 MC

NLX/NL 1500-2500 (20 ST)

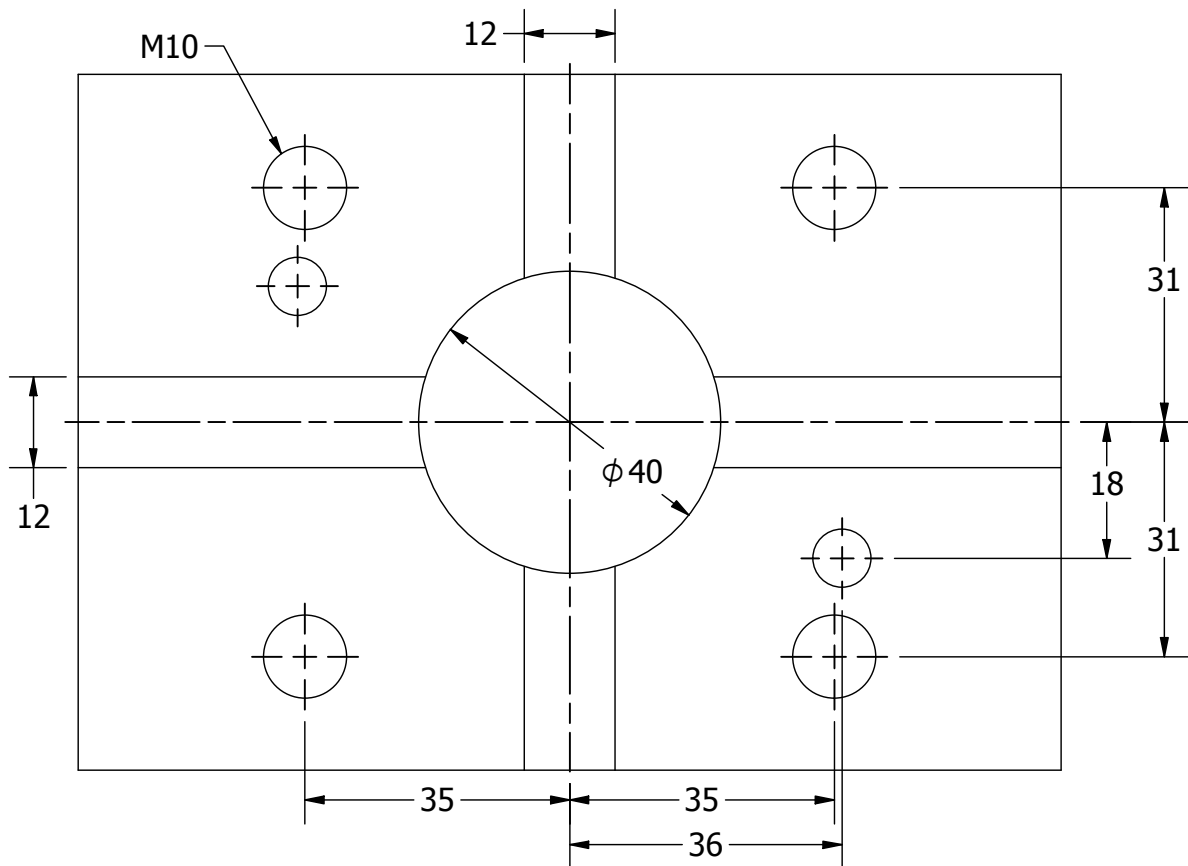
NRX 2000 MC

NT/NTX 1000-3200 (BMT40)

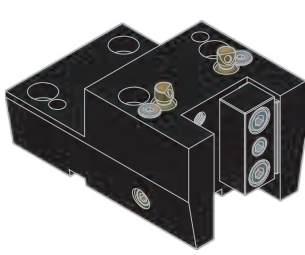
NTX 1000-3000 2nd Generation (BMT40)

NZX 1500-2000 (16 ST)

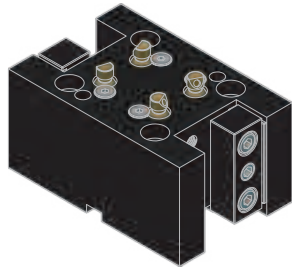
NZX 2500 (turret 2 = BMT40)



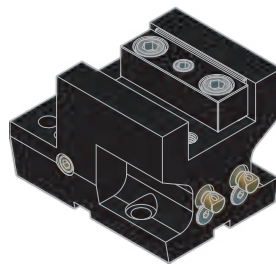
DMG MORI NZ2000



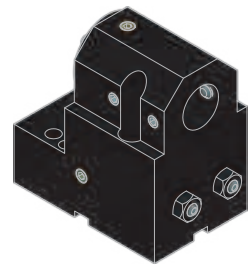
OD TURNING HOLDER **pg 10**



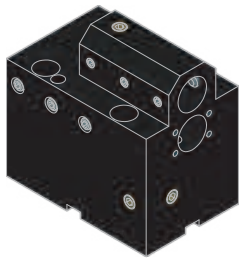
DOUBLE OD TURNING HOLDER **pg 10**



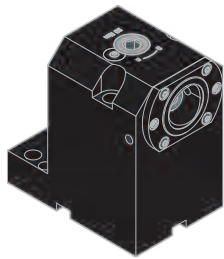
OD FACING HOLDER **pg 11**



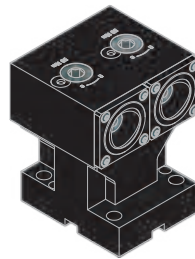
BORING BAR HOLDER ... **pg 11**



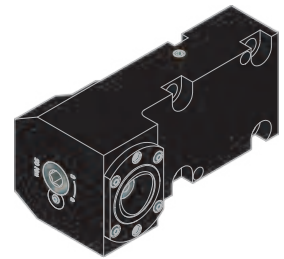
DOUBLE ID HOLDER **pg 12**



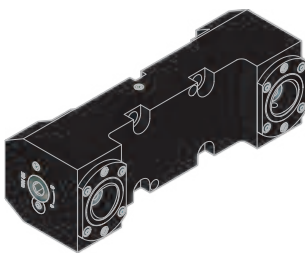
CAPTO ID HOLDER **pg 12**



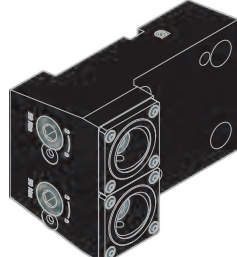
DOUBLE CAPTO ID HOLDER **pg 12**



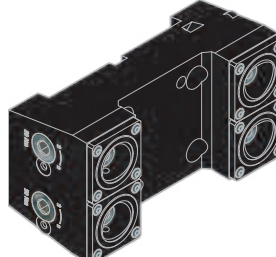
CAPTO OD HOLDER **pg 13**



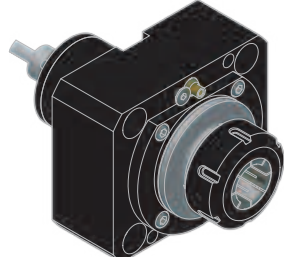
DOUBLE CAPTO OD HOLDER **pg 13**



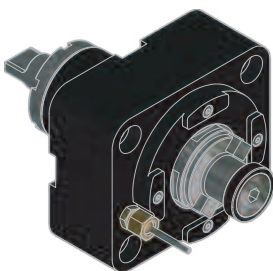
DOUBLE CAPTO OD HOLDER Y-AXIS **pg 13**



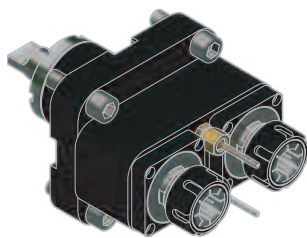
4 POSITION CAPTO OD HOLDER **pg 14**



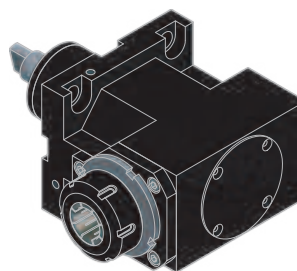
STRAIGHT DRILL-MILLING LIVE TOOL **pg 14**



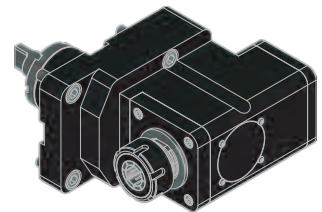
STRAIGHT DRILL-MILLING ARBOR LIVE TOOL **pg 14**



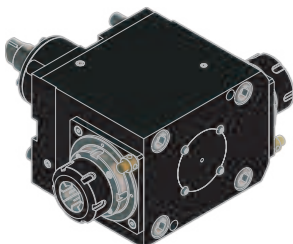
DOUBLE STRAIGHT DRILL-MILLING LIVE TOOL **pg 15**



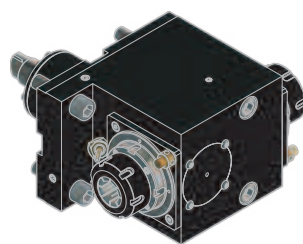
RIGHT ANGLE DRILL-MILLING LIVE TOOL **pg 15**



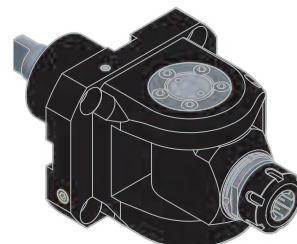
OFFSET RIGHT ANGLE DRILL-MILLING LIVE TOOL **pg 16**



DOUBLE RIGHT ANGLE DRILL-MILLING LIVE TOOL **pg 16**



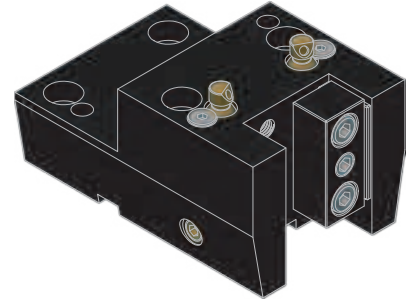
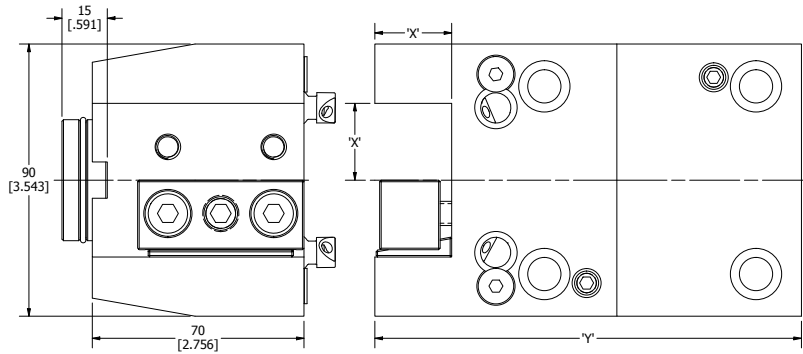
DOUBLE OFFSET RIGHT ANGLE DRILL-MILLING LIVE TOOL **pg 17**



ADJUSTABLE ANGLE LIVE TOOL **pg 17**

BMT外徑車刀座

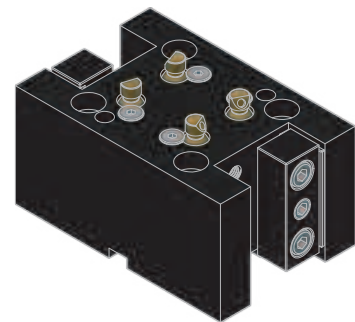
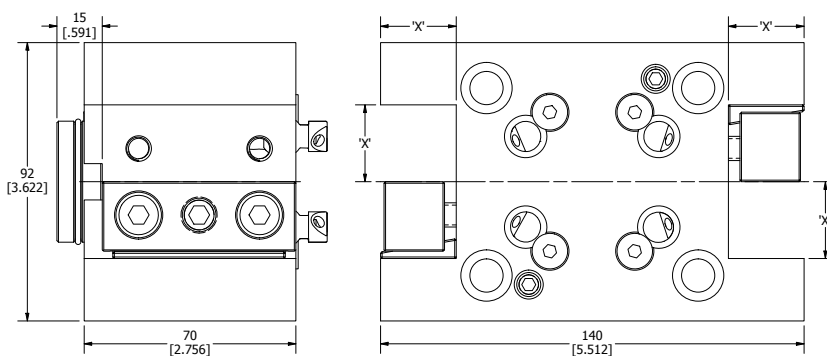
DMG MORI NZ2000 OD TURNING HOLDER



| MOLDER NO. | 規格 SPEC. | DIMENSION 'X' | DIMENSION 'Y' |
|------------|------------------|---------------|---------------|
| 5699-90001 | LC-DM-NZ2000-3/4 | 3/4" | 4.528" |
| 5699-90004 | LC-DM-NZ2000-1 | 1.000" | 5.551" |
| 5699-90007 | LC-DM-NZ2000-20 | 20mm | 90mm |
| 5699-90010 | LC-DM-NZ2000-25 | 25mm | 141mm |

BMT雙向外徑車刀座

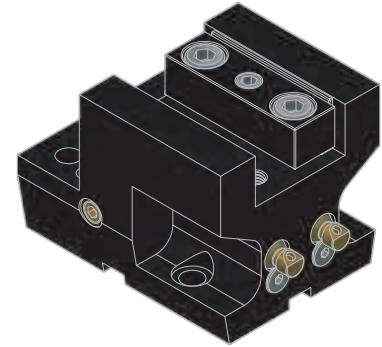
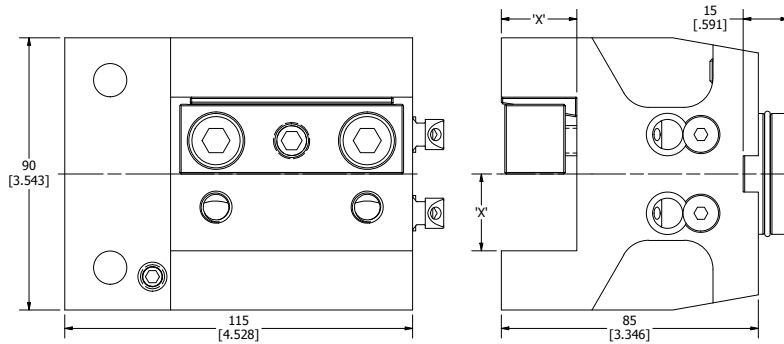
DMG MORI NZ2000 DOUBLE OD TURNING HOLDER



| MOLDER NO. | 規格 SPEC. | DIMENSION 'X' | DIMENSION 'Y' |
|------------|---------------------|---------------|---------------|
| 5699-90013 | LC-DM-NZ2000-3/4-DB | 3/4" | 5.118" |
| 5699-90016 | LC-DM-NZ2000-1-DB | 1.000" | 5.512" |
| 5699-90019 | LC-DM-NZ2000-20-DB | 20mm | 130mm |
| 5699-90022 | LC-DM-NZ2000-25-DB | 25mm | 140mm |

BMT端面車刀座

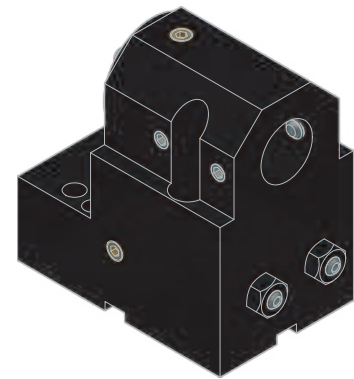
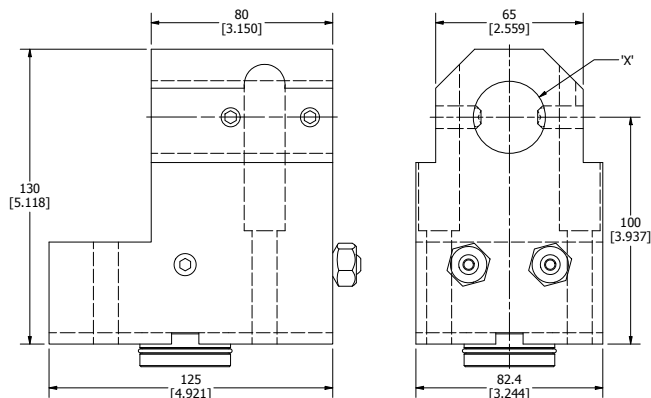
DMG MORI NZ2000 OD FACING HOLDER



| MOLDER NO. | 規格 SPEC. | DIMENSION 'X' |
|------------|---------------------|---------------|
| 5699-90025 | LC-DM-NZ2000-3/4-FA | 3/4" |
| 5699-90028 | LC-DM-NZ2000-1.0-FA | 1.000" |
| 5699-90031 | LC-DM-NZ2000-20-FA | 20mm |
| 5699-90034 | LC-DM-NZ2000-25-FA | 25mm |

BMT内径搪刀座

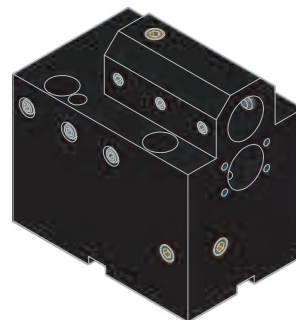
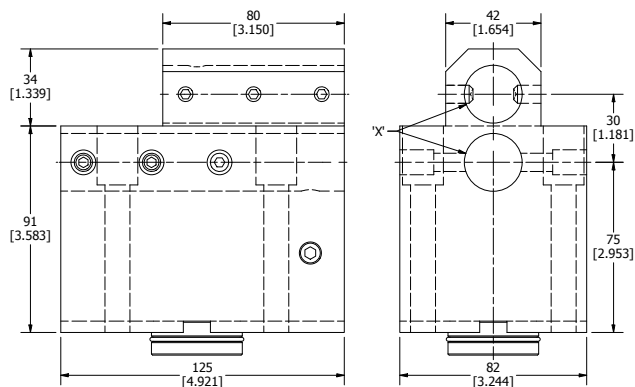
DMG MORI NZ2000 BORING BAR HOLDER



| MOLDER NO. | 規格 SPEC. | DIMENSION 'X' |
|------------|-------------------------|---------------|
| 5699-90037 | LC-DM-NZ2000-1-1/4-H100 | 1 1/4" |
| 5699-90040 | LC-DM-NZ2000-1-1/2-H100 | 1 1/2" |
| 5699-90043 | LC-DM-NZ2000-32-H100 | 32mm |
| 5699-90046 | LC-DM-NZ2000-40-H100 | 40mm |

BMT雙內徑搪刀座

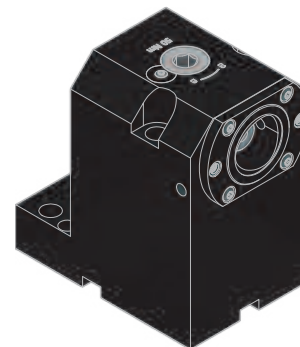
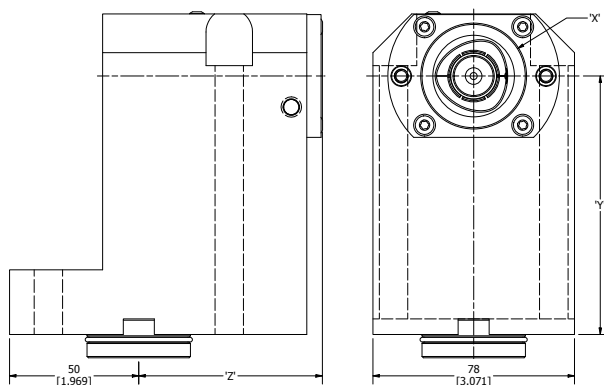
DMG MORI NZ2000 DOUBLE ID HOLDER



| MOLDER NO. | PART NUMBER | DIMENSION 'X' |
|------------|--------------------------|---------------|
| 5699-90049 | LC-DM-NZ2000-1-H7530-DB | 1.000" |
| 5699-90052 | LC-DM-NZ2000-25-H7530-DB | 25mm |

BMT/CAPTO內徑刀座

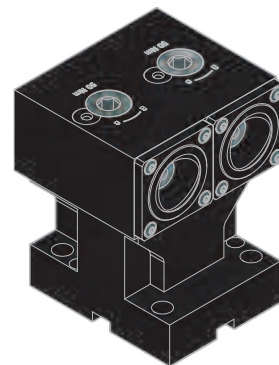
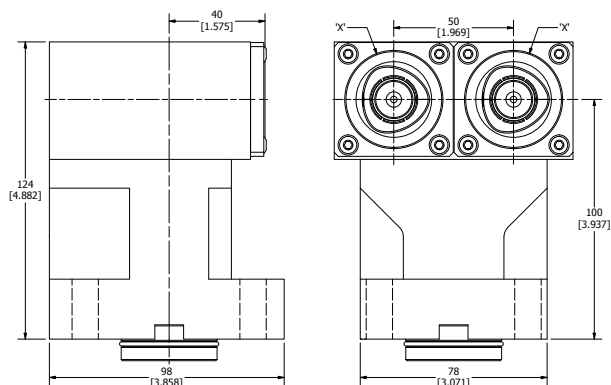
DMG MORI NZ2000 CAPTO ID HOLDER



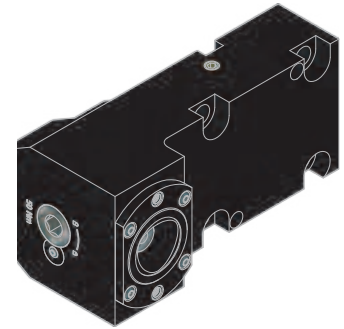
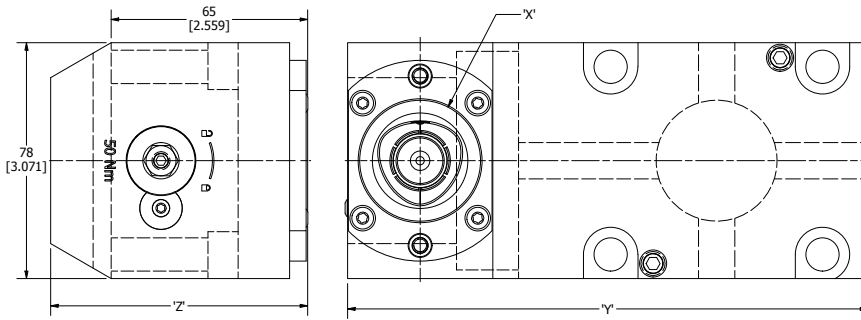
| MOLDER NO. | 規格 SPEC. | 36.000 | DIMENSION 'X' | DIMENSION 'Y' | DIMENSION 'Z' |
|------------|----------------------|--------|---------------|---------------|---------------|
| 5699-90055 | LC-DM-NZ2000-C4-H100 | C4 | 40mm | 100mm | 71mm |
| 5699-90058 | LC-DM-NZ2000-C5-H90 | C5 | 50mm | 90mm | 73mm |

BMT/CAPTO雙內徑刀座

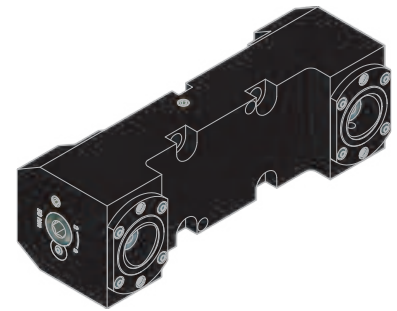
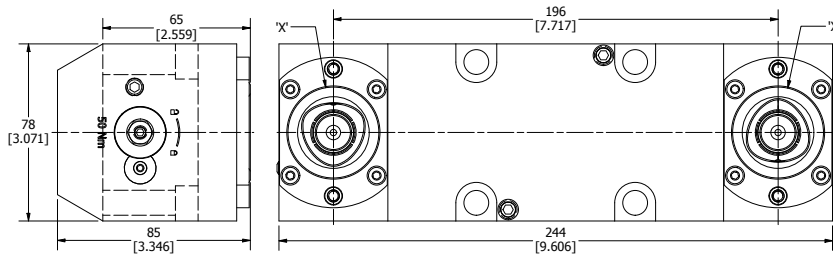
DMG MORI NZ2000 DOUBLE CAPTO ID HOLDER



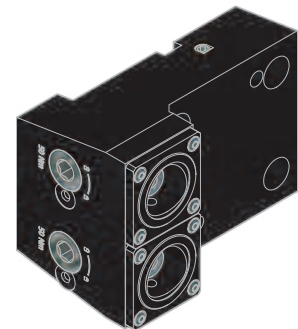
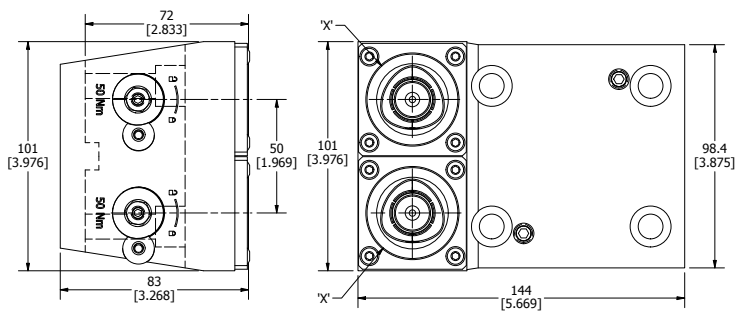
| MOLDER NO. | 規格 SPEC. | TOOL CLAMPING | DIMENSION 'X' |
|------------|-------------------------|---------------|---------------|
| 5699-90061 | LC-DM-NZ2000-C4-H100-DB | C4 | 40mm |

BMT/CAPTO外徑刀座**DMG MORI NZ2000 CAPTO OD HOLDER**

| MOLDER NO. | 規格 SPEC. | TOOL CLAMPING | DIMENSION 'X' | DIMENSION 'Y' | DIMENSION 'Z' |
|------------|-----------------|---------------|---------------|---------------|---------------|
| 5699-90064 | LC-DM-NZ2000-C4 | C4 | 40 | 172mm | 85mm |
| 5699-90067 | LC-DM-NZ2000-C5 | C5 | 50 | 180mm | 95mm |

BMT/CAPTO雙外徑刀**DMG MORI NZ2000 DOUBLE CAPTO OD HOLDER**

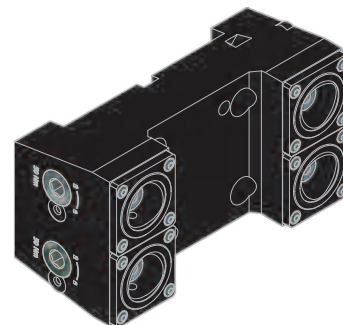
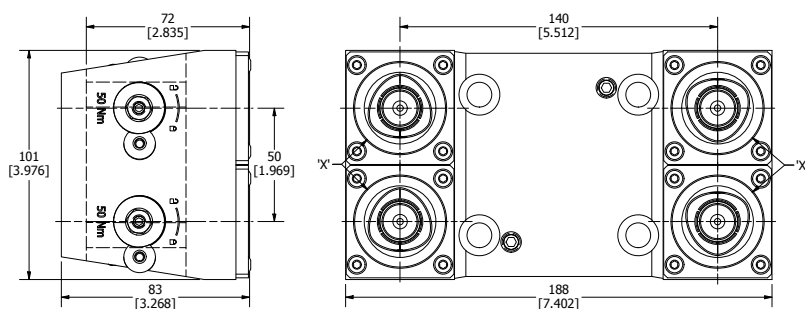
| MOLDER NO. | 規格 SPEC. | TOOL CLAMPING | DIMENSION 'X' | DIMENSION 'Y' | DIMENSION 'Z' |
|------------|--------------------|---------------|---------------|---------------|---------------|
| 5699-90070 | LC-DM-NZ2000-C4-DB | C4 | 40 | 172mm | 85mm |
| 5699-90073 | LC-DM-NZ2000-C5-DB | C5 | 50 | 180mm | 95mm |

BMT/CAPTO雙外徑刀座**DMG MORI NZ2000 DOUBLE CAPTO OD HOLDER Y-AXIS**

| MOLDER NO. | 規格 SPEC. | TOOL CLAMPING | DIMENSION 'X' |
|------------|---------------------|---------------|---------------|
| 5699-90076 | LC-DM-NZ2000-C4-DBY | C4 | 40mm |

BMT/CAPTO四只型外徑刀座

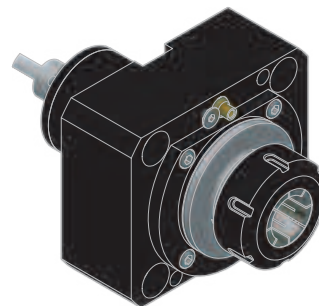
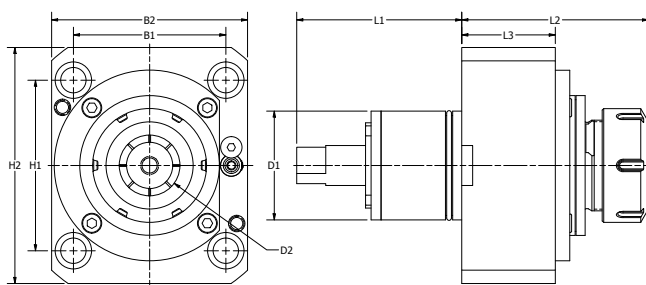
DMG MORI NZ2000 4 POSITION CAPTO OD HOLDER



| MOLDER NO. | 規格 SPEC. | TOOL CLAMPING | DIMENSION 'X' |
|------------|-----------------------|---------------|---------------|
| 5699-90079 | LC-DM-NZ2000-C4-DB-4P | C4 | 40mm |

BMT軸向ER動力刀座

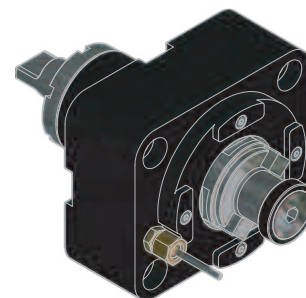
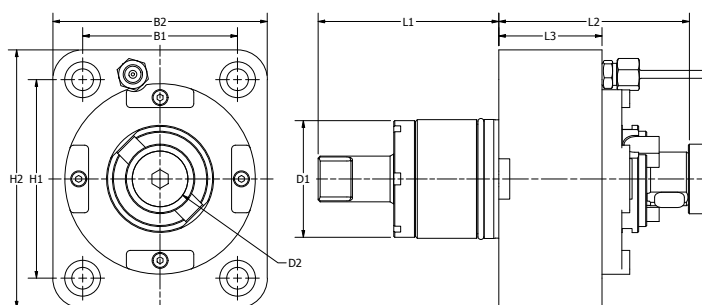
DMG MORI NZ2000 STRAIGHT DRILL-MILLING LIVE TOOL



| MOLDER NO. | 規格 SPEC. | 出水方式 COOLANT | D1 | D2 | H1 | H2 | B1 | B2 | L1 | L2 | L3 | MAX. REVOLUTION | GEAR RATIO | N.m |
|------------|-----------------------------|-----------------|----|------|----|-----|----|----|----|------|----|--------------------|---------------|-----|
| 5411-32001 | LC-BMT-01-4025-OC-DM-NZ2000 | 外部Ext. | 40 | ER25 | 70 | 110 | 62 | 78 | 69 | 84.3 | 35 | 12000 | 1:1 | 50 |
| 5411-32004 | LC-BMT-01-4025-IC-DM-NZ2000 | 内部Int. /外部Ext. | 40 | ER25 | 70 | 110 | 62 | 78 | 69 | 84.3 | 35 | 12000 | 1:1 | 50 |
| 5411-32007 | LC-BMT-01-4032-OC-DM-NZ2000 | 外部Ext. | 40 | ER32 | 70 | 110 | 62 | 78 | 69 | 89.2 | 35 | 12000 | 1:1 | 50 |
| 5411-32010 | LC-BMT-01-4032-IC-DM-NZ2000 | 内部Int. /外部Ext. | 40 | ER32 | 70 | 110 | 62 | 78 | 69 | 89.2 | 35 | 12000 | 1:1 | 50 |

BMT軸向FMB動力刀座

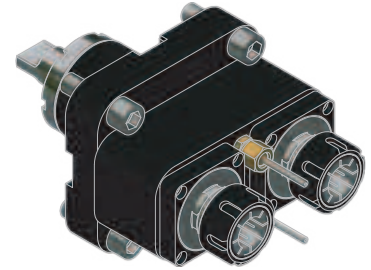
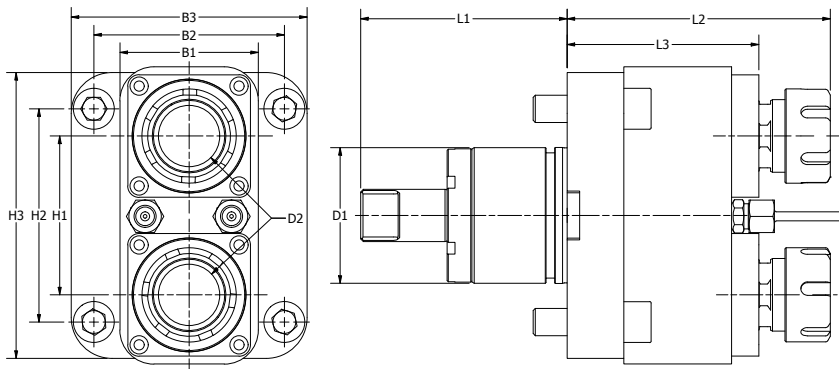
DMG MORI NZ2000 STRAIGHT DRILL-MILLING ARBOR LIVE TOOL



| MOLDER NO. | 規格 SPEC. | 出水方式 COOLANT | D1 | D2 | H1 | H2 | B1 | B2 | L1 | L2 | L3 | MAX. REVOLUTION | GEAR RATIO | N.m |
|------------|------------------------------|-----------------|----|----|----|-----|----|----|----|-----|----|--------------------|---------------|-----|
| 5411-32013 | LC-BMT-01-40B22-OC-DM-NZ2000 | 外部Ext. | 40 | 22 | 70 | 110 | 62 | 78 | 69 | 100 | 35 | 12000 | 1:1 | 50 |

BMT軸向雙ER動力刀座

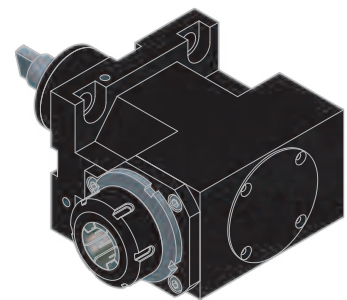
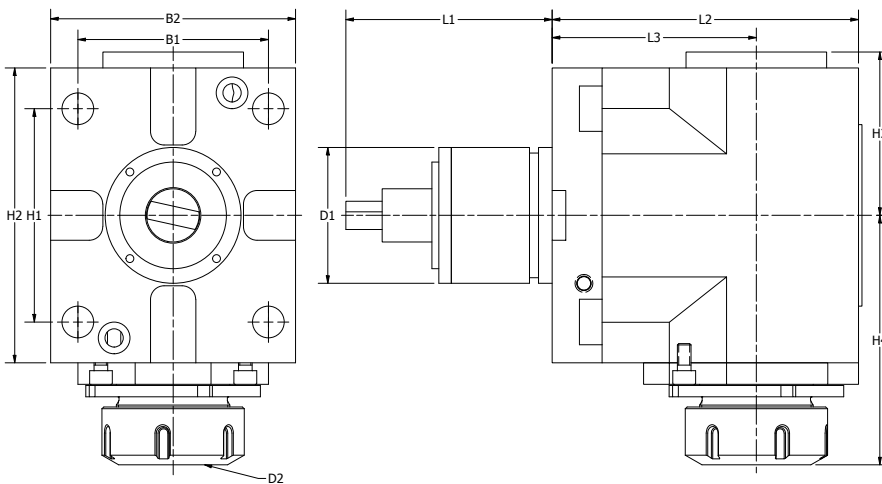
DMG MORI NZ2000 DOUBLE STRAIGHT DRILL-MILLING LIVE TOOL



| MOLDER NO. | 規格 SPEC. | 出水方式 COOLANT | D1 | D2 | H1 | H2 | H3 | B1 | B2 | B3 | L1 | L2 | L3 | MAX. REVOLUTION | GEAR RATIO | N.m |
|------------|----------------------------------|------------------|----|------|------|----|-----|----|----|-----|----|------|----|--------------------|---------------|-----|
| 5411-32016 | LC-BMT-03-4020-OC-DM-NZ2000 | 外部Ext. | 40 | ER20 | 60 | 70 | 110 | 52 | 62 | 78 | 69 | 93.5 | 66 | 6000 | 1:1 | 20 |
| 5411-32019 | LC-BMT-03-4020-IC-DM-NZ2000 | 内部Int. 外部Ext. | 40 | ER20 | 60 | 70 | 110 | 52 | 62 | 78 | 69 | 93.5 | 66 | 6000 | 1:1 | 20 |
| 5411-32022 | LC-BMT-03-4020-OC-61.5-DM-NZ2000 | 外部Ext. | 40 | ER20 | 61.5 | 70 | 95 | 60 | 62 | 105 | 69 | 90 | 70 | 6000 | 1:1 | 30 |
| 5411-32025 | LC-BMT-03-4020-IC-61.5-DM-NZ2000 | 内部Int. 外部Ext. | 40 | ER20 | 61.5 | 70 | 95 | 60 | 62 | 105 | 69 | 90 | 70 | 6000 | 1:1 | 30 |

BMT徑向ER動力刀座

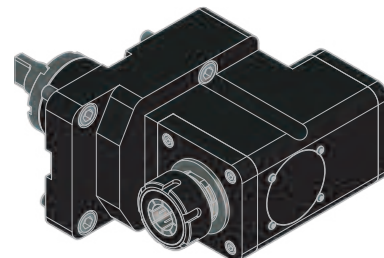
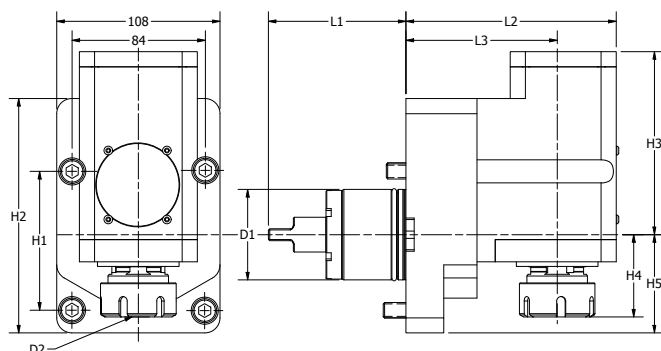
DMG MORI NZ2000 RIGHT ANGLE DRILL-MILLING LIVE TOOL



| MOLDER NO. | 規格 SPEC. | 出水方式 COOLANT | D1 | D2 | H1 | H2 | H3 | B1 | B2 | B3 | L1 | L2 | L3 | MAX. REVOLUTION | GEAR RATIO | N.m |
|------------|-----------------------------|------------------|----|------|----|-----|------|----|----|----|----|-----|----|--------------------|---------------|-----|
| 5411-32028 | LC-BMT-11-4025-OC-DM-NZ2000 | 外部Ext. | 40 | ER25 | 70 | 110 | 57.5 | 89 | 62 | 78 | 69 | 119 | 85 | 12000 | 1:1 | 50 |
| 5411-32031 | LC-BMT-11-4025-IC-DM-NZ2000 | 内部Int. 外部Ext. | 40 | ER25 | 70 | 110 | 57.5 | 89 | 62 | 78 | 69 | 119 | 85 | 12000 | 1:1 | 50 |
| 5411-32034 | LC-BMT-11-4032-OC-DM-NZ2000 | 外部Ext. | 40 | ER32 | 70 | 110 | 57.5 | 94 | 62 | 78 | 69 | 119 | 85 | 12000 | 1:1 | 50 |
| 5411-32037 | LC-BMT-11-4032-IC-DM-NZ2000 | 内部Int. 外部Ext. | 40 | ER32 | 70 | 110 | 57.5 | 94 | 62 | 78 | 69 | 119 | 85 | 12000 | 1:1 | 50 |

BMT徑向後縮ER動力刀座

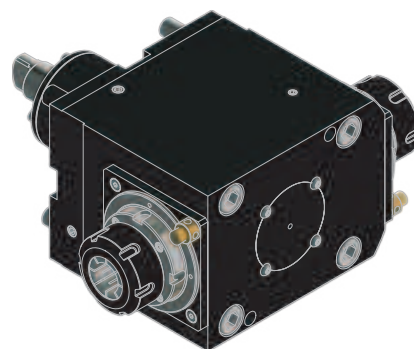
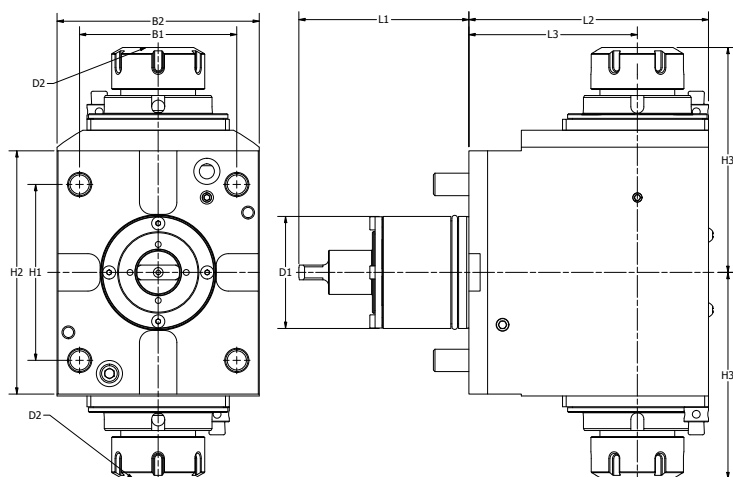
DMG MORI NZ2000 OFFSET RIGHT ANGLE DRILL-MILLING LIVE TOOL



| MOLDER NO. | 規格 SPEC. | 出水方式 COOLANT | D1 | D2 | H1 | H2 | H3 | H4 | H5 | B1 | B2 | L1 | L2 | L3 | MAX. REVOLUTION | GEAR RATIO | N.m |
|------------|-----------------------------|------------------|----|------|----|-------|------|----|----|----|----|----|-----|-----|--------------------|---------------|-----|
| 5411-32040 | LC-BMT-13-4025-OC-DM-NZ2000 | 外部Ext. | 40 | ER25 | 70 | 127.5 | 92.5 | 54 | 55 | 62 | 78 | 69 | 159 | 125 | 12000 | 1:1 | 50 |
| 5411-32043 | LC-BMT-13-4025-IC-DM-NZ2000 | 内部Int. 外部Ext. | 40 | ER25 | 70 | 127.5 | 98.4 | 54 | 55 | 62 | 78 | 69 | 159 | 125 | 12000 | 1:1 | 50 |
| 5411-32046 | LC-BMT-13-4032-OC-DM-NZ2000 | 外部Ext. | 40 | ER32 | 70 | 127.5 | 92.5 | 59 | 55 | 62 | 78 | 69 | 159 | 125 | 12000 | 1:1 | 50 |
| 5411-32049 | LC-BMT-13-4032-IC-DM-NZ2000 | 内部Int. 外部Ext. | 40 | ER32 | 70 | 127.5 | 98.4 | 59 | 55 | 62 | 78 | 69 | 159 | 125 | 12000 | 1:1 | 50 |

BMT徑向雙ER動力刀座

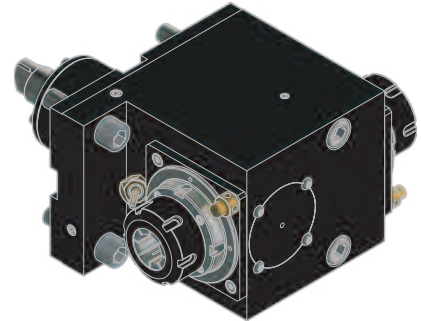
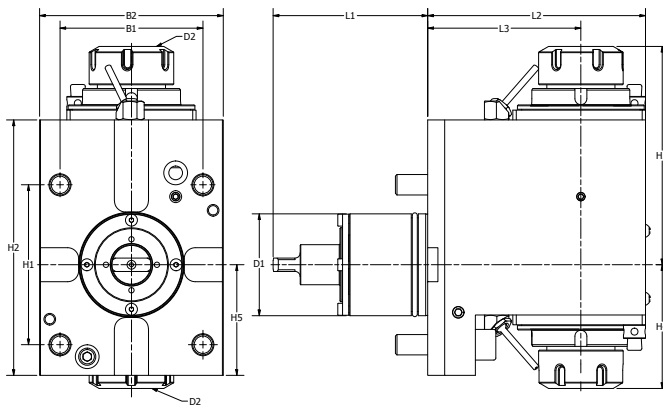
DMG MORI NZ2000 DOUBLE RIGHT ANGLE DRILL-MILLING LIVE TOOL



| MOLDER NO. | 規格 SPEC. | 出水方式 COOLANT | D1 | D2 | H1 | H2 | H3 | B1 | B2 | L1 | L2 | L3 | MAX. REVOLUTION | GEAR RATIO | N.m |
|------------|-----------------------------|-----------------|----|------|----|-----|----|----|----|----|-----|----|--------------------|---------------|-----|
| 5411-32052 | LC-BMT-15-4025-OC-DM-NZ2000 | 外部Ext. | 40 | ER25 | 70 | 110 | 89 | 62 | 78 | 69 | 119 | 85 | 12000 | 1:1 | 50 |
| 5411-32055 | LC-BMT-15-4032-OC-DM-NZ2000 | 外部Ext. | 40 | ER32 | 70 | 110 | 94 | 62 | 78 | 69 | 119 | 85 | 12000 | 1:1 | 50 |

BMT徑向後縮雙ER動力刀座

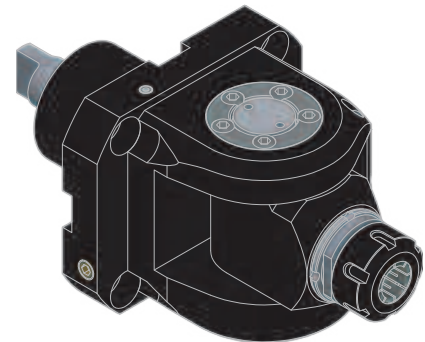
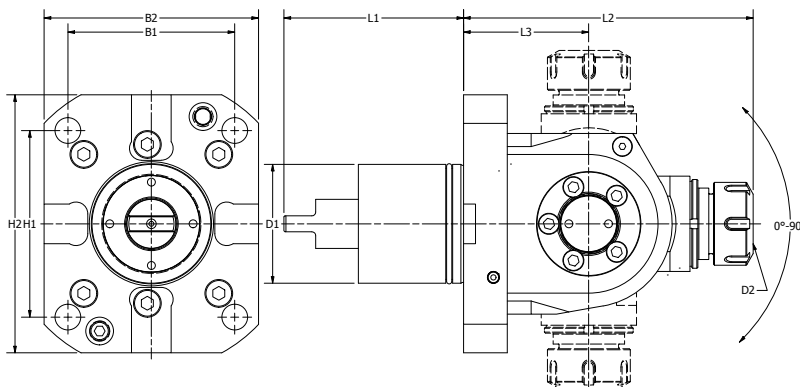
DMG MORI NZ2000 DOUBLE OFFSET RIGHT ANGLE RILL-MILLING LIVE TOOL



| MOLDER NO. | 規格 SPEC. | 出水方式 COOLANT | D1 | D2 | H1 | H2 | H3 | H4 | H5 | B1 | B2 | L1 | L2 | L3 | MAX. REVOLUTION | GEAR RATIO | N.m |
|------------|-----------------------------|-----------------|----|------|----|-------|-----|----|----|----|----|----|-----|-----|--------------------|---------------|-----|
| 5411-32058 | LC-BMT-17-4025-OC-DM-NZ2000 | 外部Ext. | 40 | ER25 | 70 | 127.5 | 124 | 54 | 55 | 62 | 78 | 69 | 159 | 125 | 12000 | 1:1 | 50 |
| 5411-32061 | LC-BMT-17-4032-OC-DM-NZ2000 | 外部Ext. | 40 | ER32 | 70 | 127.5 | 129 | 59 | 55 | 62 | 78 | 69 | 159 | 125 | 12000 | 1:1 | 50 |

BMT可調90度動力刀座

DMG MORI NZ2000 ADJUSTABLE ANGLE LIVE TOOL



| MOLDER NO. | 規格 SPEC. | 出水方式 COOLANT | D1 | D2 | H1 | H2 | B1 | B2 | L1 | L2 | L3 | MAX. REVOLUTION | GEAR RATIO | N.m |
|------------|-----------------------------|------------------|----|------|----|-----|----|----|----|-----|----|--------------------|---------------|-----|
| 5411-32064 | LC-BMT-21-4020-OC-DM-NZ2000 | 外部Ext. | 40 | ER20 | 70 | 110 | 62 | 78 | 69 | 107 | 50 | 12000 | 1:1 | 17 |
| 5411-32067 | LC-BMT-21-4020-IC-DM-NZ2000 | 内部Int. 外部Ext. | 40 | ER20 | 70 | 110 | 62 | 78 | 69 | 107 | 50 | 12000 | 1:1 | 17 |

DMG MORI NZ3000 MACHINE CONNECTIONS

COMPATIBLE MACHINES

NLX/NL 1500-4000 MC/Y/SMC/SY

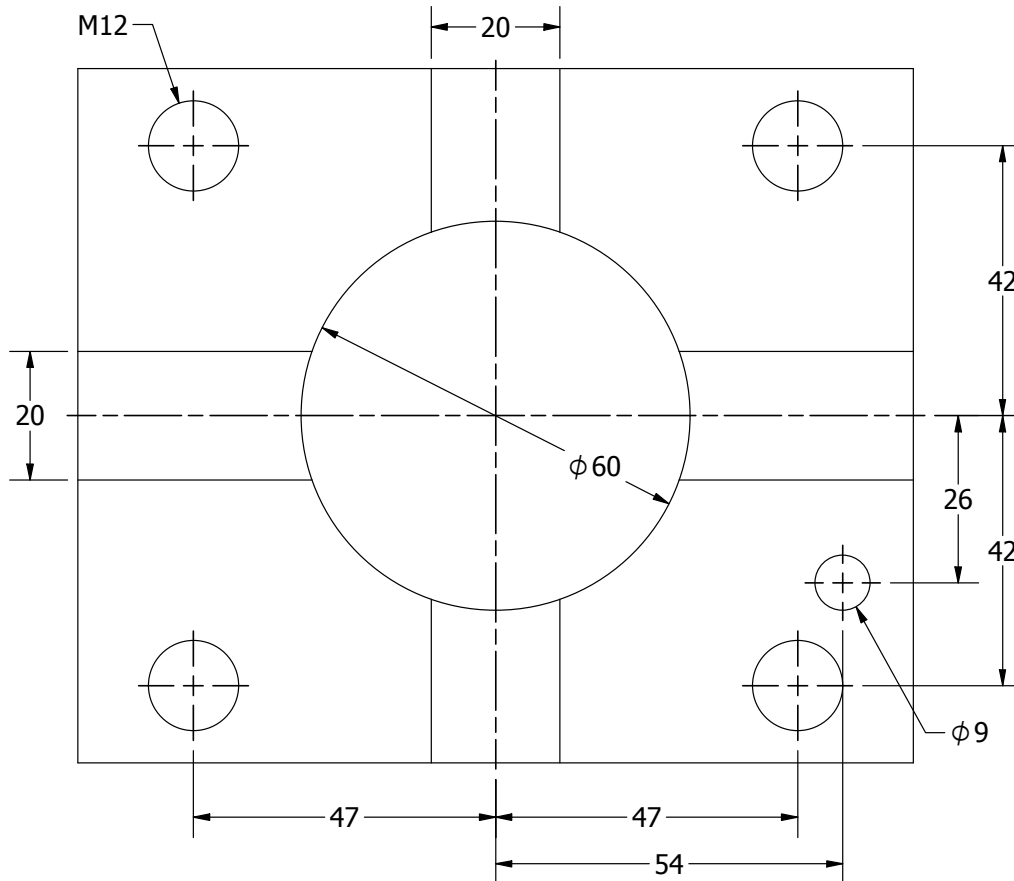
NTX 2000-3000 2nd Generation (BMT60)

NZX 2500 (BMT60)

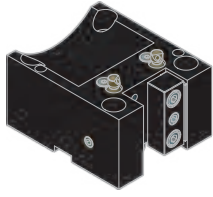
NZX2500 (BMT60)

NLX 4000 (High Torque Milling)

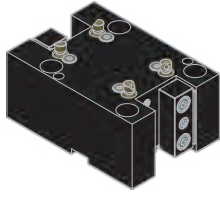
NT 4200-5400



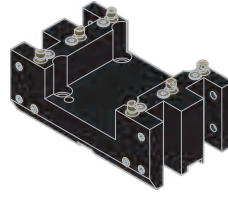
DMG MORI NL3000



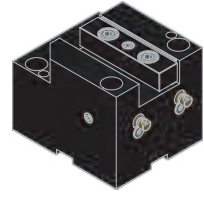
OD TURNING HOLDER **pg 20**



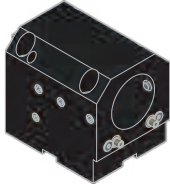
DOUBLE OD TURNING HOLDER **pg 20**



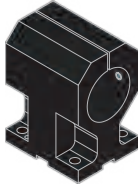
4 POSITION OD TURNING HOLDER **pg 21**



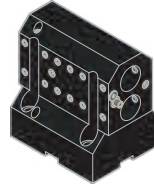
OD FACING HOLDER **pg 21**



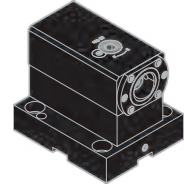
BORING BAR HOLDER ... **pg 22**



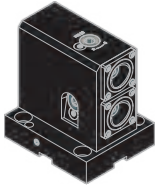
SPLIT BORING BAR HOLDER **pg 23**



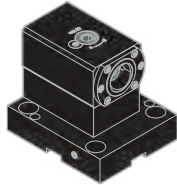
DOUBLE ID HOLDER **pg 23**



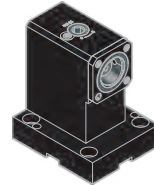
CAPTO ID HOLDER **pg 24**



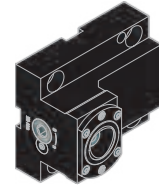
DOUBLE CAPTO ID HOLDER **pg 24**



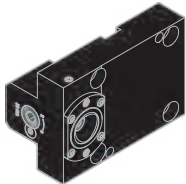
SUB SPINDLE CAPTO ID HOLDER **pg 25**



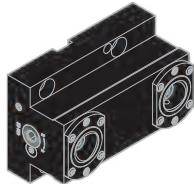
EXTENDED CAPTO ID HOLDER **pg 25**



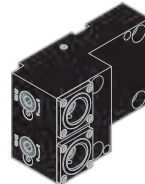
CAPTO OD HOLDER **pg 26**



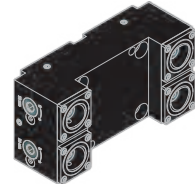
SHORT CAPTO OD HOLDER **pg 26**



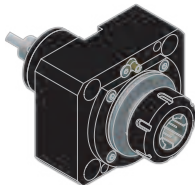
DOUBLE CAPTO OD HOLDER **pg 27**



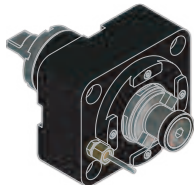
DOUBLE CAPTO HOLDER Y-AXIS **pg 27**



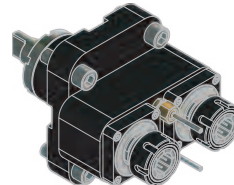
4 POSITION CAPTO OD HOLDER **pg 28**



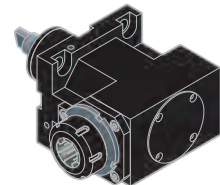
STRAIGHT DRILL-MILLING LIVE TOOL **pg 28**



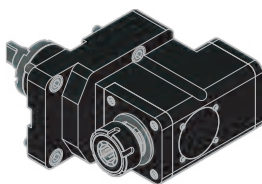
STRAIGHT DRILL-MILLING ARBOR LIVE TOOL **pg 29**



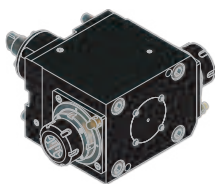
DOUBLE STRAIGHT DRILL - MILLING LIVE TOOL **pg 29**



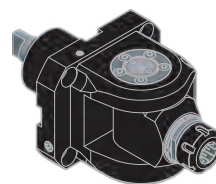
RIGHT ANGLE DRILL-MILLING LIVE TOOL **pg 30**



OFFSET RIGHT ANGLE DRILL - MILLING LIVE TOOL **pg 30**



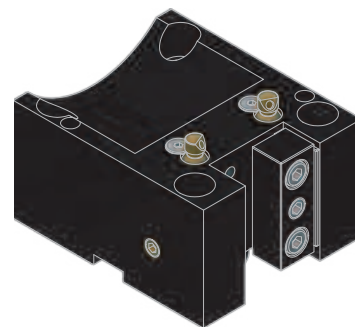
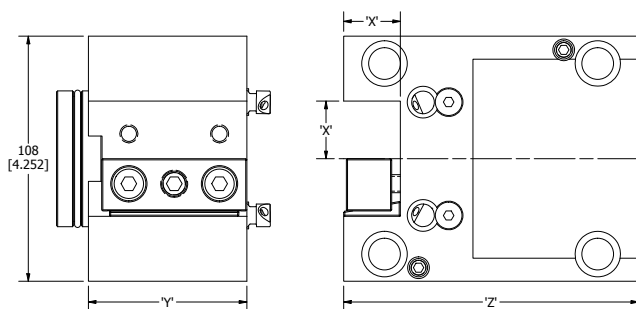
DOUBLE RIGHT ANGLE DRILL - MILLING LIVE TOOL **pg 31**



ADJUSTABLE ANGLE LIVE TOOL **pg 31**

BMT外徑車刀座

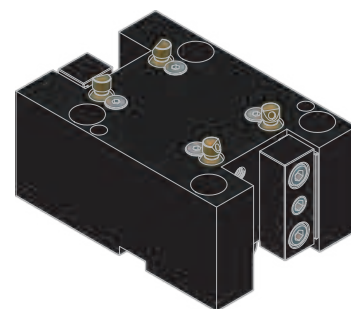
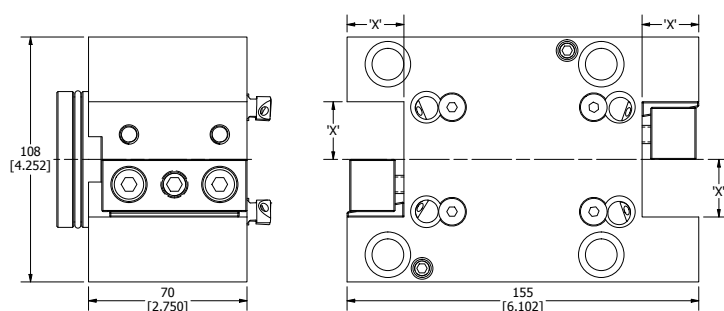
DMG MORI NL3000 OD TURNING HOLDER



| MOLDER NO. | 規格 SPEC. | DIMENSION 'X' | DIMENSION 'Y' | DIMENSION 'Z' |
|------------|------------------|---------------|---------------|---------------|
| 5699-90091 | LC-DM-NL3000-3/4 | 3/4" | 2.750" | 5.118" |
| 5699-90094 | LC-DM-NL3000-1 | 1.000" | 2.750" | 5.118" |
| 5699-90097 | LC-DM-NL3000-1Y | 1.000" | 3.537" | 5.118" |
| 5699-90100 | LC-DM-NL3000-1YZ | 1.000" | 2.750" | 6.102" |
| 5699-90103 | LC-DM-NL3000-20 | 20mm | 70mm | 130mm |
| 5699-90106 | LC-DM-NL3000-25 | 25mm | 70mm | 130mm |
| 5699-90109 | LC-DM-NL3000-25Y | 25mm | 90mm | 130mm |
| 5699-90112 | LC-DM-NL3000-25Z | 25mm | 70mm | 155mm |

BMT雙外徑車刀座

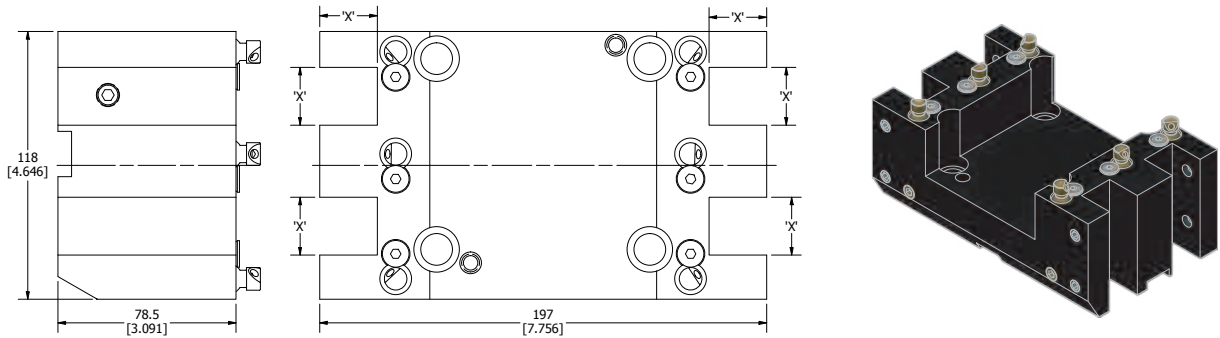
DMG MORI NL3000 DOUBLE OD TURNING HOLDER



| MOLDER NO. | 規格 SPEC. | DIMENSION 'X' |
|------------|--------------------|---------------|
| 5699-90115 | LC-DM-NL3000-1-DB | 1.000" |
| 5699-90118 | LC-DM-NL3000-25-DB | 25mm |

BMT四只型外徑車刀座

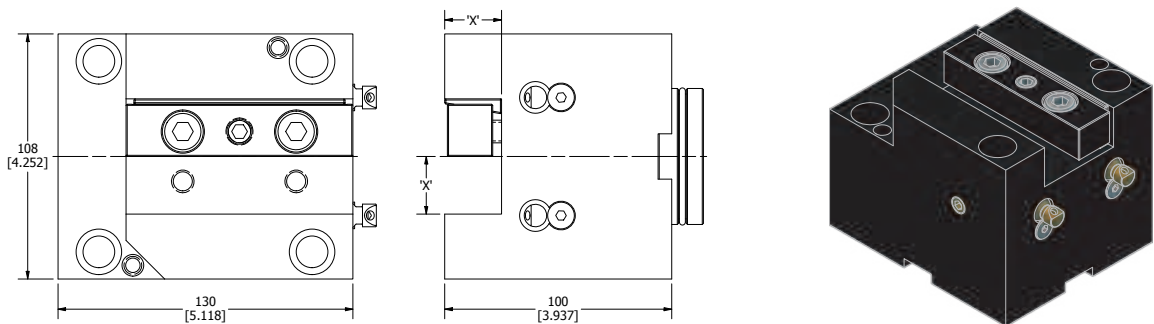
DMG MORI NL3000 4 POSITION OD TURNING HOLDER



| MOLDER NO. | 規格 SPEC. | DIMENSION 'X' |
|------------|-----------------------|---------------|
| 5699-90121 | LC-DM-NL3000-1-DB-4P | 1.000" |
| 5699-90124 | LC-DM-NL3000-25-DB-4P | 25mm |

BMT端面車刀座

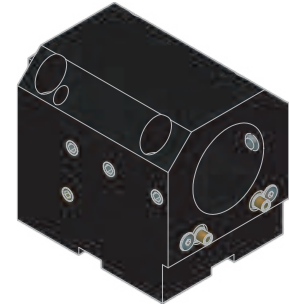
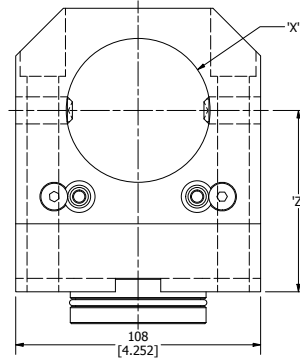
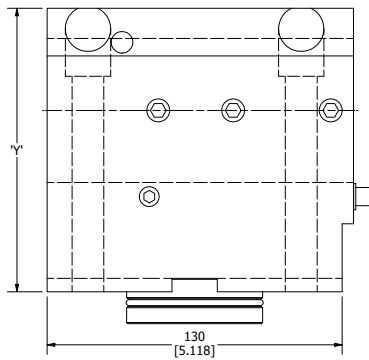
DMG MORI NL3000 OD FACING HOLDER



| MOLDER NO. | 規格 SPEC. | DIMENSION 'X' |
|------------|---------------------|---------------|
| 5699-90127 | LC-DM-NL3000-3/4-FA | 3/4" |
| 5699-90130 | LC-DM-NL3000-1-FA | 1.000" |
| 5699-90133 | LC-DM-NL3000-20-FA | 20mm |
| 5699-90136 | LC-DM-NL3000-25-FA | 25mm |

BMT内徑搪刀座

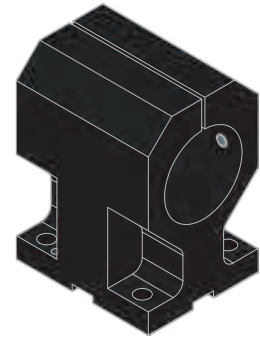
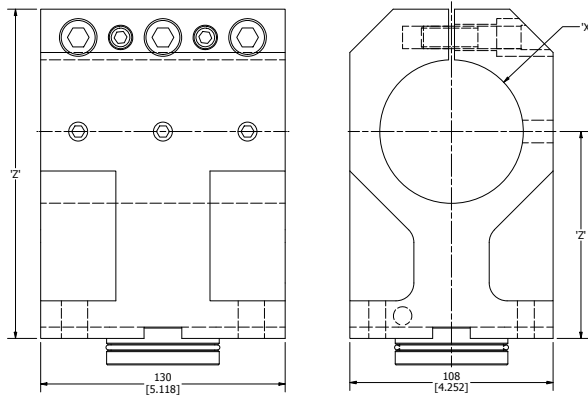
DMG MORI NL3000 BORING BAR HOLDER



| MOLDER NO. | 規格 SPEC. | DIMENSION 'X' | DIMENSION 'Y' | DIMENSION 'Z' |
|------------|---------------------------|---------------|---------------|---------------|
| 5699-90139 | LC-DM-NL3000-1-H3.150 | 1.000" | 4.646" | 3.150" |
| 5699-90142 | LC-DM-NL3000-1-1/4-H3.150 | 1 1/4" | 4.646" | 3.150" |
| 5699-90145 | LC-DM-NL3000-1-1/2-H3.150 | 1 1/2" | 4.646" | 3.150" |
| 5699-90148 | LC-DM-NL3000-1-3/4-H3.150 | 1 3/4" | 4.646" | 3.150" |
| 5699-90151 | LC-DM-NL3000-2-H3.150 | 2.000" | 4.646" | 3.150" |
| 5699-90154 | LC-DM-NL3000-2-1/2-H3.150 | 2 1/2" | 4.921" | 3.150" |
| 5699-90157 | LC-DM-NL3000-3-H4.331 | 3.000" | 6.300" | 4.331" |
| 5699-90160 | LC-DM-NL3000-1-1/2-H2.559 | 1 1/2" | 4.055" | 2.559" |
| 5699-90163 | LC-DM-NL3000-1-1/2-H4.724 | 1 1/2" | 6.102" | 4.724" |
| 5699-90166 | LC-DM-NL3000-2-H4.724 | 2.000" | 6.102" | 4.724" |
| 5699-90169 | LC-DM-NL3000-25-H80 | 25mm | 118mm | 80mm |
| 5699-90172 | LC-DM-NL3000-32-H80 | 32mm | 118mm | 80mm |
| 5699-90175 | LC-DM-NL3000-40-H80 | 40mm | 118mm | 80mm |
| 5699-90178 | LC-DM-NL3000-45-H80 | 45mm | 118mm | 80mm |
| 5699-90181 | LC-DM-NL3000-50-H80 | 50mm | 118mm | 80mm |
| 5699-90184 | LC-DM-NL3000-65-H80 | 65mm | 125mm | 80mm |
| 5699-90187 | LC-DM-NL3000-80-H110 | 80mm | 160mm | 110mm |
| 5699-90190 | LC-DM-NL3000-40-H65 | 40mm | 103mm | 65mm |
| 5699-90193 | LC-DM-NL3000-40-H120 | 40mm | 155mm | 120mm |
| 5699-90196 | LC-DM-NL3000-50-H120 | 50mm | 155mm | 120mm |

BMT内徑搪刀座

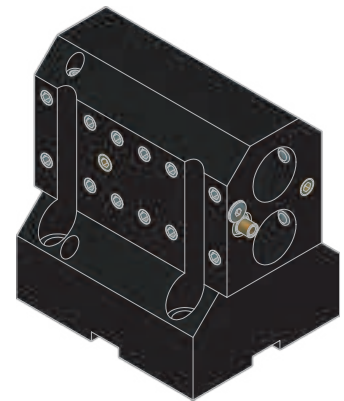
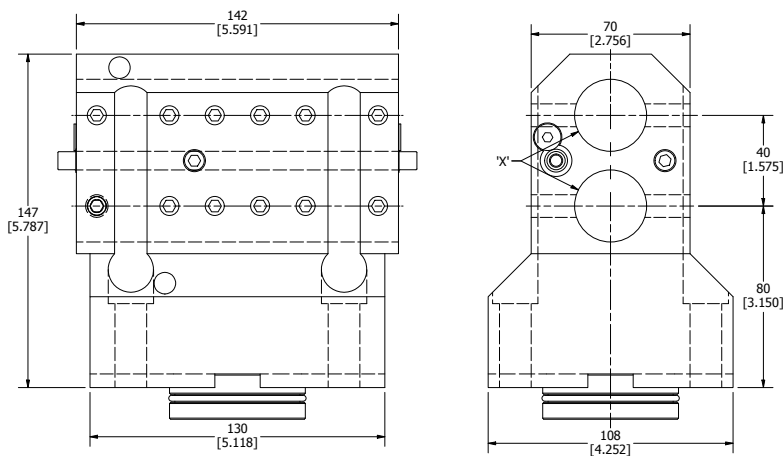
DMG MORI NL3000 SPLIT BORING BAR HOLDER



| MOLDER NO. | 規格 SPEC. | DIMENSION 'X' | DIMENSION 'Y' | DIMENSION 'Z' |
|------------|------------------------------|---------------|---------------|---------------|
| 5699-90199 | LC-DM-NL3000-1-H3.150-ST | 1.000" | 4.646" | 3.150" |
| 5699-90202 | LC-DM-NL3000-1-1/2-H3.150-ST | 1 1/2" | 4.646" | 3.150" |
| 5699-90205 | LC-DM-NL3000-2-H3.150-ST | 2.000" | 4.921" | 3.150" |
| 5699-90208 | LC-DM-NL3000-3-H4.331-ST | 3.000" | 6.890" | 4.331" |
| 5699-90211 | LC-DM-NL3000-25-H80-ST | 25mm | 118mm | 80mm |
| 5699-90214 | LC-DM-NL3000-40-H80-ST | 40mm | 118mm | 80mm |
| 5699-90217 | LC-DM-NL3000-50-H80-ST | 50mm | 125mm | 80mm |
| 5699-90220 | LC-DM-NL3000-80-H110-ST | 80mm | 175mm | 110mm |

BMT雙內徑搪刀座

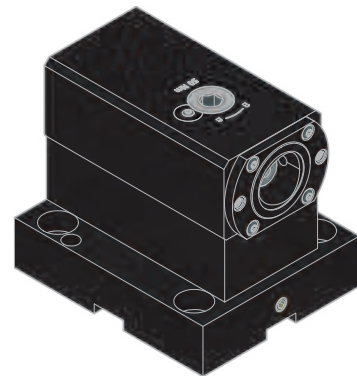
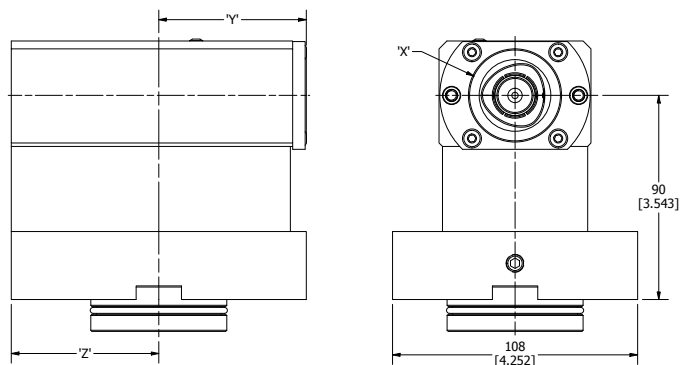
DMG MORI NL3000 DOUBLE ID HOLDER



| MOLDER NO. | 規格 SPEC. | DIMENSION 'X' |
|------------|-----------------------------|---------------|
| 5699-90223 | LC-DM-NL3000-1-H8040-DB | 1.000" |
| 5699-90226 | LC-DM-NL3000-1-1/4-H8040-DB | 1.250" |
| 5699-90229 | LC-DM-NL3000-25-H8040-DB | 25mm |
| 5699-90232 | LC-DM-NL3000-32-H8040-DB | 32mm |

BMT/CAPTO内徑刀座

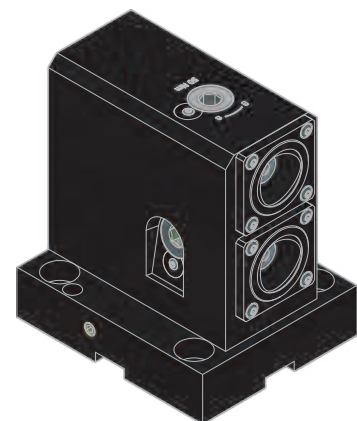
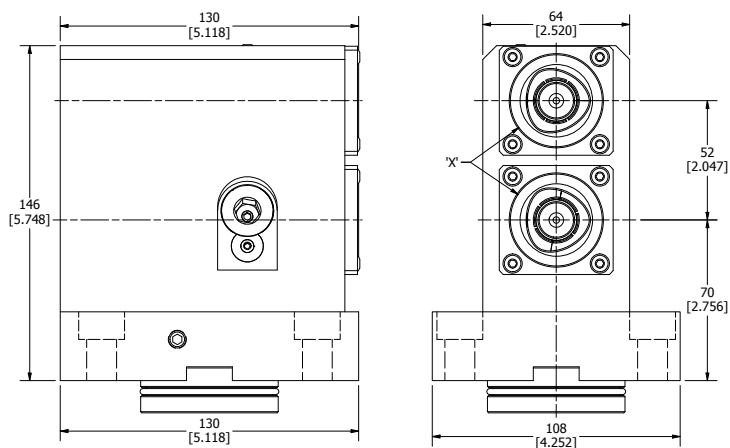
DMG MORI NL3000 CAPTO ID HOLDER



| MOLDER NO. | 規格 SPEC. | TOOL CLAMPING | DIMENSION 'X' | DIMENSION 'Y' | DIMENSION 'Z' |
|------------|---------------------|---------------|---------------|---------------|---------------|
| 5699-90235 | LC-DM-NL3000-C4-H90 | C4 | 40mm | 65mm | 65mm |
| 5699-90238 | LC-DM-NL3000-C5-H90 | C5 | 50mm | 68mm | 65mm |
| 5699-90241 | LC-DM-NL3000-C6-H90 | C6 | 63mm | 37mm | 79mm |

BMT/CAPTO雙內徑刀座

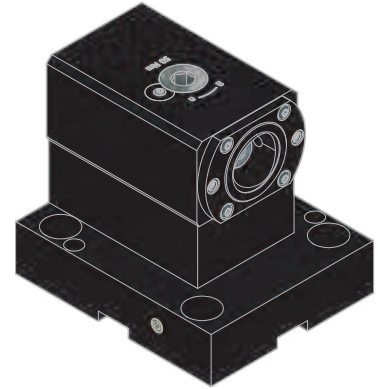
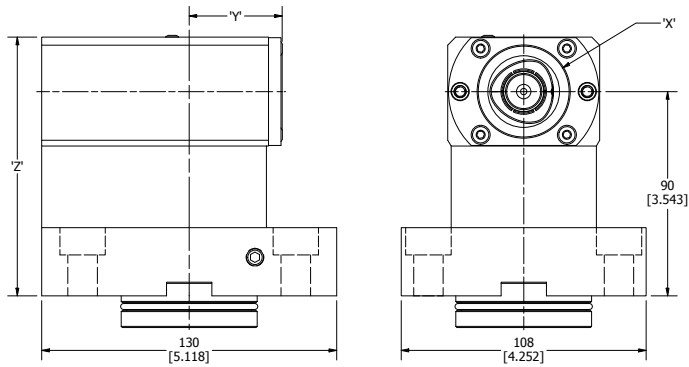
DMG MORI NL3000 DOUBLE CAPTO ID HOLDER



| MOLDER NO. | 規格 SPEC. | TOOL CLAMPING | DIMENSION 'X' |
|------------|--------------------------|---------------|---------------|
| 5699-90244 | LC-DM-NL3000-C4-H7052-DB | C4 | 40mm |

BMT/CAPTO副主軸內徑刀座

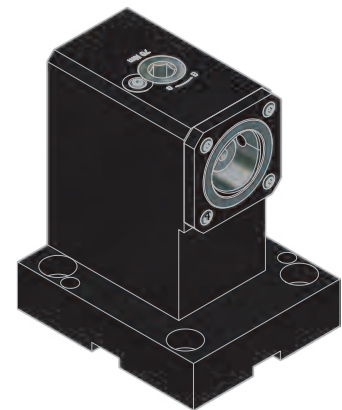
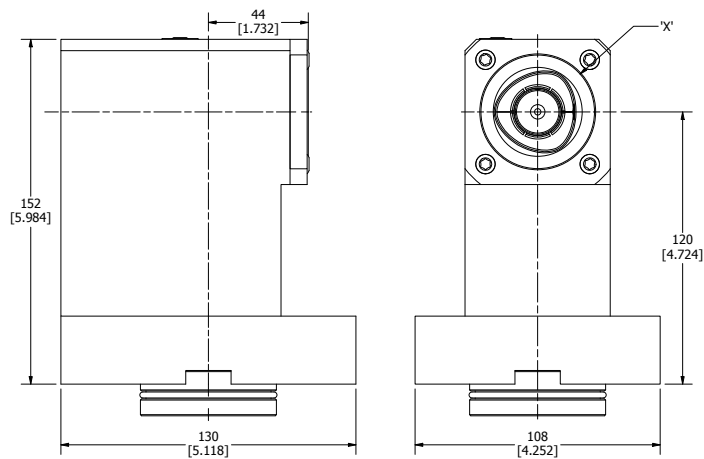
DMG MORI NL3000 SUB SPINDLE CAPTO ID HOLDER



| MOLDER NO. | 規格 SPEC. | TOOL CLAMPING | DIMENSION 'X' | DIMENSION 'Y' | DIMENSION 'Z' |
|------------|------------------------|---------------|---------------|---------------|---------------|
| 5699-90247 | LC-DM-NL3000-C4-H90-SP | C4 | 40mm | 41mm | 114mm |
| 5699-90250 | LC-DM-NL3000-C5-H90-SP | C5 | 50mm | 44mm | 122mm |

BMT/CAPTO加長外徑刀座

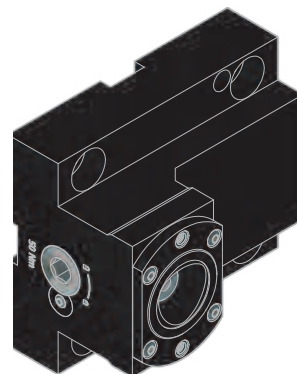
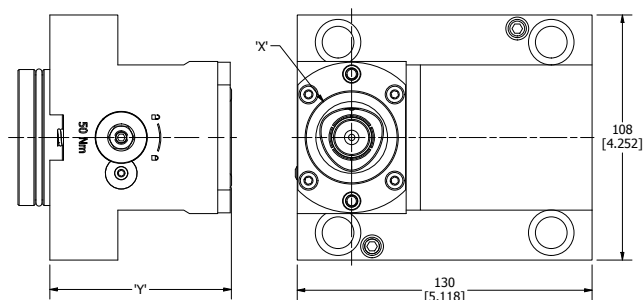
DMG MORI NL3000 EXTENDED CAPTO ID HOLDER



| MOLDER NO. | 規格 SPEC. | TOOL CLAMPING | DIMENSION 'X' |
|------------|--------------------|---------------|---------------|
| 5699-90253 | LC-DM-NL3000-C5-EX | C5 | 50mm |

BMT/CAPTO外徑刀座

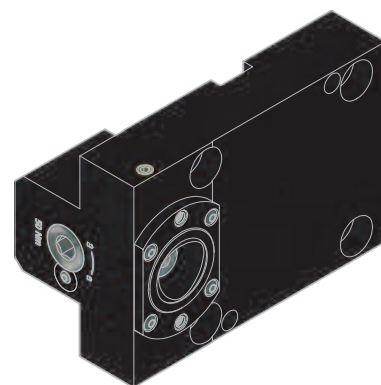
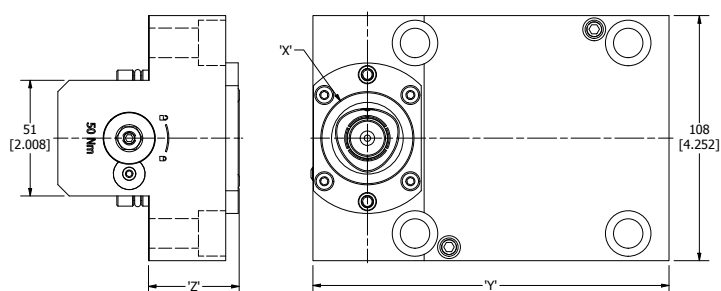
DMG MORI NL3000 CAPTO OD HOLDER



| MOLDER NO. | 規格 SPEC. | TOOL CLAMPING | DIMENSION 'X' | DIMENSION 'Y' |
|------------|-----------------|---------------|---------------|---------------|
| 5699-90256 | LC-DM-NZ3000-C4 | C4 | 40mm | 80mm |
| 5699-90259 | LC-DM-NZ3000-C5 | C5 | 50mm | 95mm |

BMT/CAPTO外徑刀座

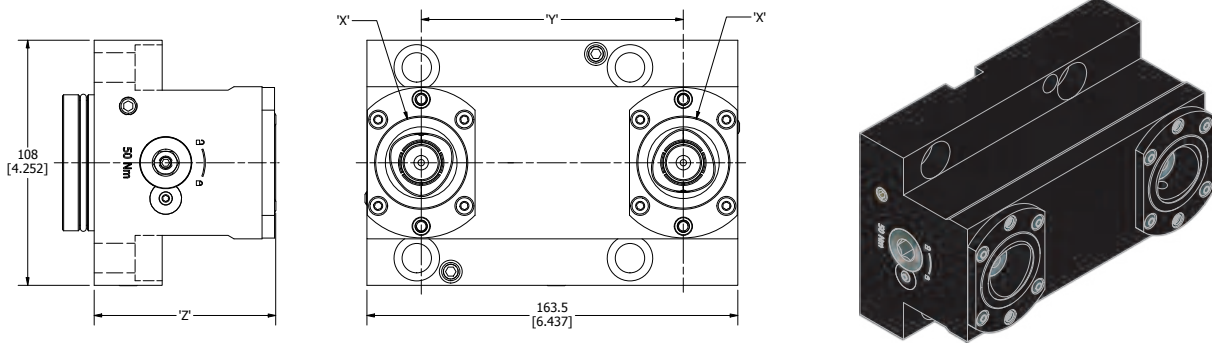
DMG MORI NL3000 SHORT CAPTO OD HOLDER



| MOLDER NO. | 規格 SPEC. | TOOL CLAMPING | DIMENSION 'X' | DIMENSION 'Y' | DIMENSION 'Z' |
|------------|-------------------|---------------|---------------|---------------|---------------|
| 5699-90262 | LC-DM-NZ3000-C4YZ | C4 | 40mm | 157mm | 40mm |
| 5699-90265 | LC-DM-NZ3000-C5YZ | C5 | 50mm | 174mm | 53mm |

BMT/CAPTO雙外徑刀座

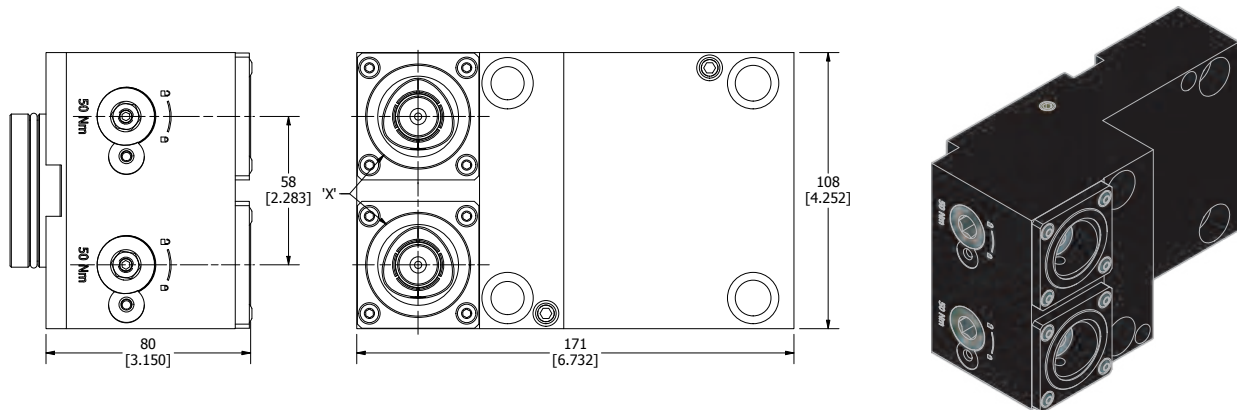
DMG MORI NL3000 DOUBLE CAPTO OD HOLDER



| MOLDER NO. | 規格 SPEC. | TOOL CLAMPING | DIMENSION 'X' | DIMENSION 'Y' | DIMENSION 'Z' |
|------------|--------------------|---------------|---------------|---------------|---------------|
| 5699-90268 | LC-DM-NZ3000-C4-DB | C4 | 40mm | 115.5mm | 80mm |
| 5699-90271 | LC-DM-NZ3000-C5-DB | C5 | 50mm | 99.5mm | 95mm |

BMT/CAPTO雙外徑刀座

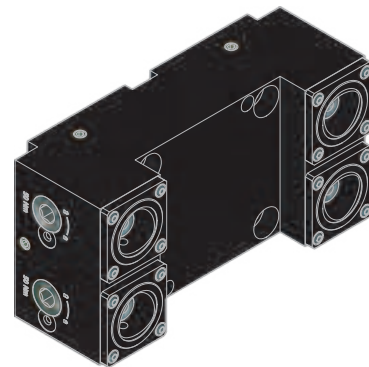
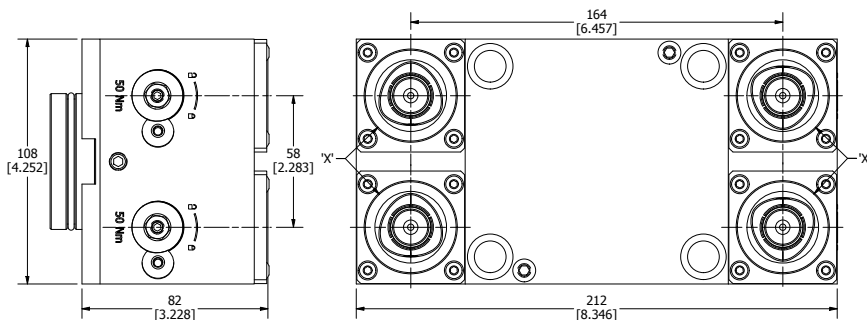
DMG MORI NL3000 DOUBLE CAPTO HOLDER Y-AXIS



| MOLDER NO. | 規格 SPEC. | TOOL CLAMPING | DIMENSION 'X' |
|------------|---------------------|---------------|---------------|
| 5699-90274 | LC-DM-NZ3000-C4-DBY | C4 | 40mm |

BMT/CAPTO四只型外徑刀座

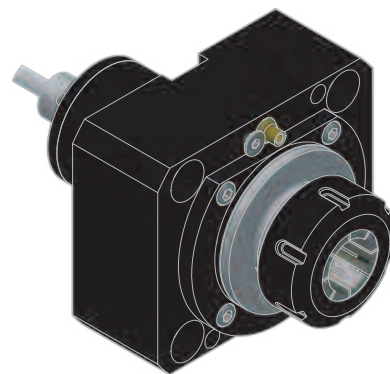
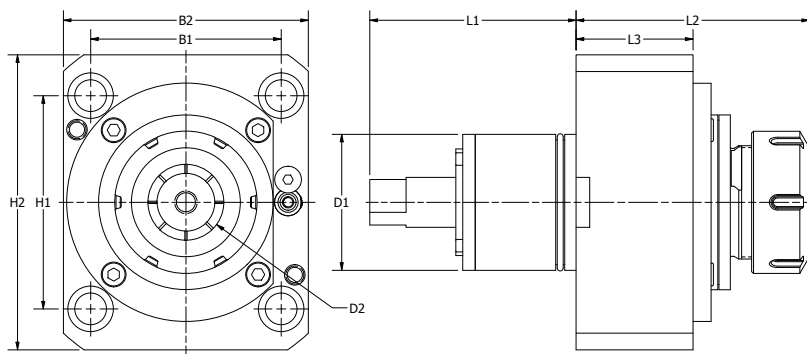
DMG MORI NL3000 4 POSITION CAPTO OD HOLDER



| MOLDER NO. | 規格 SPEC. | TOOL CLAMPING | DIMENSION 'X' |
|------------|-----------------------|---------------|---------------|
| 5699-90277 | LC-DM-NZ3000-C4-DB-4P | C4 | 40mm |

BMT軸向ER動力刀座

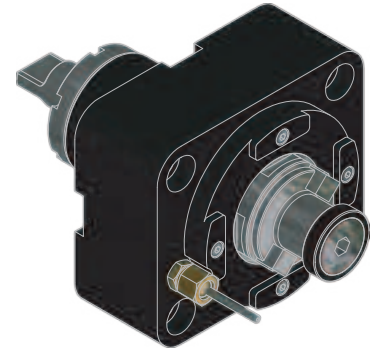
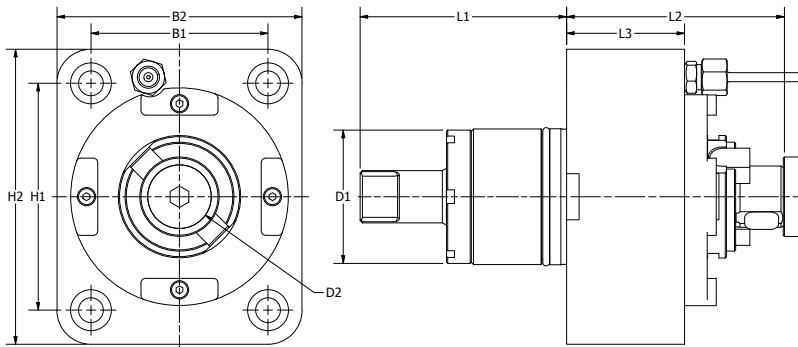
DMG MORI NL3000 STRAIGHT DRILL-MILLING LIVE TOOL



| MOLDER NO. | 規格 SPEC. | 出水方式 COOLANT | D1 | D2 | H1 | H2 | B1 | B2 | L1 | L2 | L3 | MAX. REVOLUTION | GEAR RATIO | N.m |
|------------|----------------------------|------------------|----|------|----|-----|----|-----|----|------|----|--------------------|---------------|-----|
| 5411-32082 | LC-BMT-01-6025OC-DM-NZ3000 | 外部Ext. | 60 | ER25 | 94 | 130 | 84 | 108 | 91 | 85 | 51 | 10000 | 1:1 | 60 |
| 5411-32085 | LC-BMT-01-6025IC-DM-NZ3000 | 内部Int. 外部Ext. | 60 | ER25 | 94 | 130 | 84 | 108 | 91 | 85 | 51 | 10000 | 1:1 | 60 |
| 5411-32088 | LC-BMT-01-6032OC-DM-NZ3000 | 外部Ext. | 60 | ER32 | 94 | 130 | 84 | 108 | 91 | 89.5 | 51 | 10000 | 1:1 | 60 |
| 5411-32091 | LC-BMT-01-6032IC-DM-NZ3000 | 内部Int. 外部Ext. | 60 | ER32 | 94 | 130 | 84 | 108 | 91 | 89.5 | 51 | 10000 | 1:1 | 60 |
| 5411-32094 | LC-BMT-01-6040OC-DM-NZ3000 | 外部Ext. | 60 | ER40 | 94 | 130 | 84 | 108 | 91 | 92 | 51 | 10000 | 1:1 | 60 |
| 5411-32097 | LC-BMT-01-6040IC-DM-NZ3000 | 内部Int. 外部Ext. | 60 | ER40 | 94 | 130 | 84 | 108 | 91 | 92 | 51 | 10000 | 1:1 | 60 |

BMT軸向FMB動力刀座

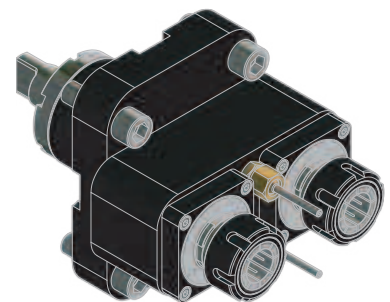
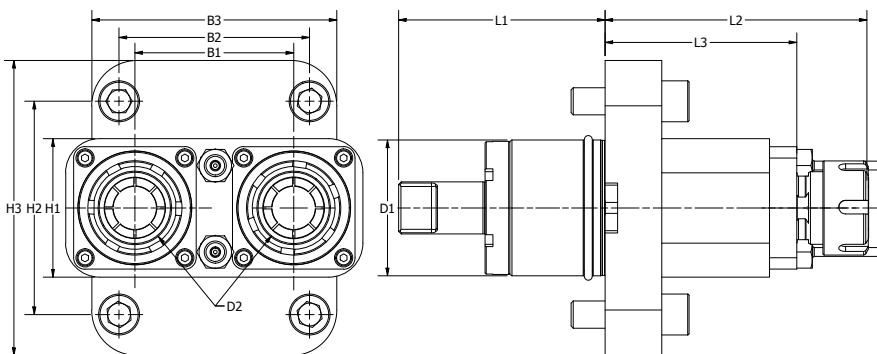
DMG MORI NL3000 STRAIGHT DRILL-MILLING ARBOR LIVE TOOL



| MOLDER NO. | 規格 SPEC. | 出水方式 COOLANT | D1 | D2 | H1 | H2 | B1 | B2 | L1 | L2 | L3 | MAX. REVOLUTION | GEAR RATIO | N.m |
|------------|-----------------------------|-----------------|----|----|----|-----|----|-----|----|-----|----|--------------------|---------------|-----|
| 5411-32100 | LC-BMT-01-60B27OC-DM-NZ3000 | 外部Ext. | 60 | 27 | 94 | 130 | 84 | 108 | 91 | 100 | 51 | 6000 | 1:1 | 60 |
| 5411-32103 | LC-BMT-01-60B22OC-DM-NZ3000 | 外部Ext. | 60 | 22 | 94 | 130 | 84 | 108 | 91 | 100 | 51 | 6000 | 1:1 | 60 |

BMT軸向雙ER動力刀座

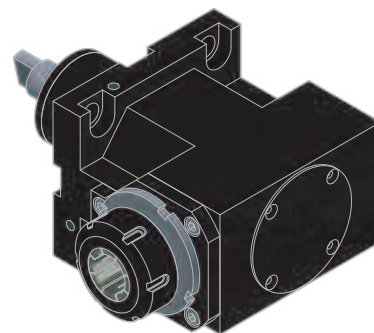
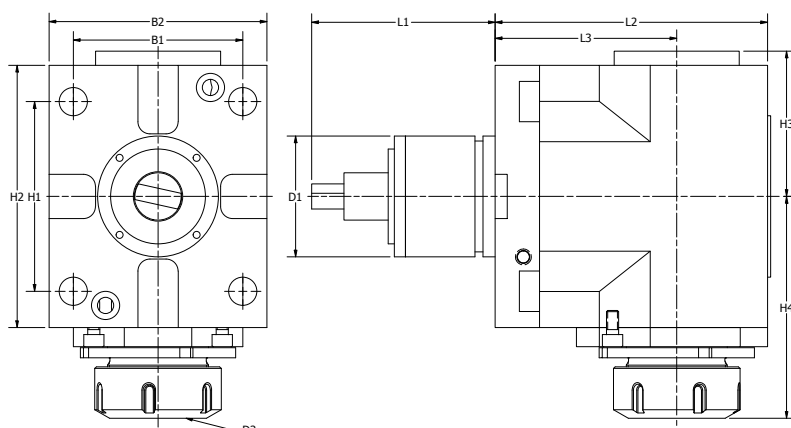
DMG MORI NL3000 DOUBLE STRAIGHT DRILL-MILLING LIVE TOOL



| MOLDER NO. | 規格 SPEC. | 出水方式 COOLANT | D1 | D2 | H1 | H2 | H3 | B1 | B2 | B3 | L1 | L2 | L3 | MAX. REVOLUTION | GEAR RATIO | N.m |
|------------|----------------------------|------------------|----|------|----|----|-----|----|----|-----|----|-------|----|--------------------|---------------|-----|
| 5411-32106 | LC-BMT-03-6025OC-DM-NZ3000 | 外部Ext. | 60 | ER25 | 66 | 94 | 130 | 70 | 84 | 108 | 91 | 117.5 | 85 | 6000 | 1:1 | 40 |
| 5411-32109 | LC-BMT-03-6025IC-DM-NZ3000 | 内部Int. 外部Ext. | 60 | ER25 | 66 | 94 | 130 | 70 | 84 | 108 | 91 | 117.5 | 85 | 6000 | 1:1 | 40 |

BMT徑向ER動力刀座

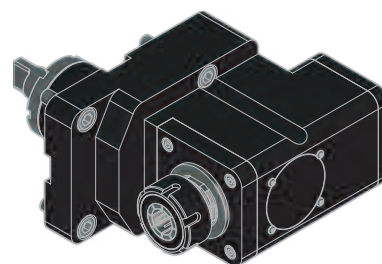
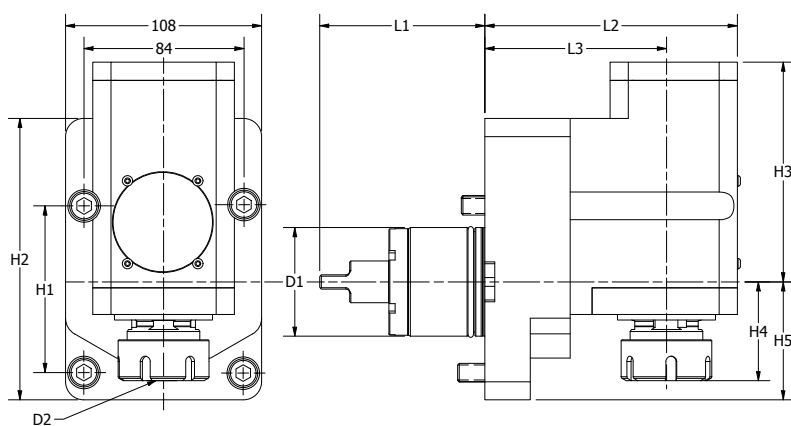
DMG MORI NL3000 RIGHT ANGLE DRILL-MILLING LIVE TOOL



| MOLDER NO. | 規格 SPEC. | 出水方式 COOLANT | D1 | D2 | H1 | H2 | H3 | B1 | B2 | B3 | L1 | L2 | L3 | MAX. REVOLUTION | GEAR RATIO | N.m |
|------------|----------------------------|------------------|----|------|----|-----|------|-------|----|-----|----|-----|----|--------------------|---------------|-----|
| 5411-32112 | LC-BMT-11-6025OC-DM-NZ3000 | 外部Ext. | 60 | ER25 | 94 | 130 | 67.7 | 99 | 84 | 108 | 91 | 129 | 90 | 10000 | 1:1 | 60 |
| 5411-32115 | LC-BMT-11-6025IC-DM-NZ3000 | 内部Int. 外部Ext. | 60 | ER25 | 94 | 130 | 67.7 | 99 | 84 | 108 | 91 | 129 | 90 | 10000 | 1:1 | 60 |
| 5411-32118 | LC-BMT-11-6032OC-DM-NZ3000 | 外部Ext. | 60 | ER32 | 94 | 130 | 67.7 | 103.9 | 84 | 108 | 91 | 129 | 90 | 10000 | 1:1 | 60 |
| 5411-32121 | LC-BMT-11-6032IC-DM-NZ3000 | 内部Int. 外部Ext. | 60 | ER32 | 94 | 130 | 67.7 | 103.9 | 84 | 108 | 91 | 129 | 90 | 10000 | 1:1 | 60 |
| 5411-32124 | LC-BMT-11-6032OC-DM-NZ3000 | 外部Ext. | 60 | ER40 | 94 | 130 | 67.7 | 106 | 84 | 108 | 91 | 129 | 90 | 10000 | 1:1 | 60 |
| 5411-32127 | LC-BMT-11-6040IC-DM-NZ3000 | 内部Int. 外部Ext. | 60 | ER40 | 94 | 130 | 67.7 | 106 | 84 | 108 | 91 | 129 | 90 | 10000 | 1:1 | 60 |

BMT徑向後縮ER動力刀座

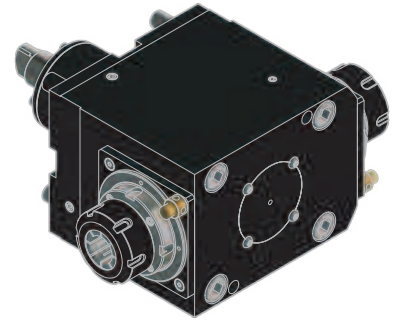
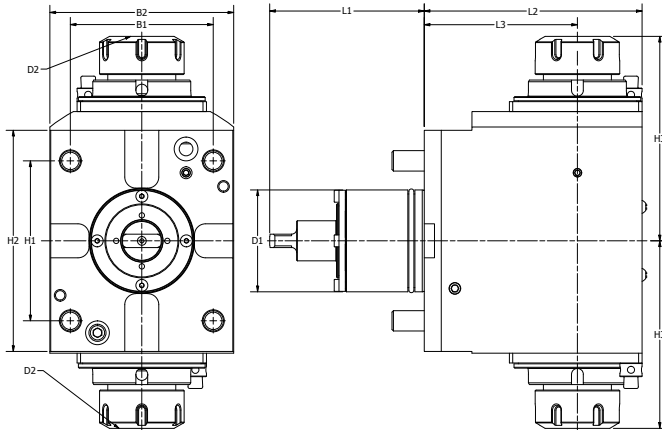
DMG MORI NL3000 OFFSET RIGHT ANGLE DRILL-MILLING LIVE TOOL



| MOLDER NO. | 規格 SPEC. | 出水方式 COOLANT | D1 | D2 | H1 | H2 | H3 | H4 | H5 | B1 | B2 | L1 | L2 | L3 | MAX. REVOLUTION | GEAR RATIO | N.m |
|------------|----------------------------|------------------|----|------|----|-----|-----|------|----|----|-----|----|-----|-----|--------------------|---------------|-----|
| 5411-32130 | LC-BMT-13-6032OC-DM-NZ3000 | 外部Ext. | 60 | ER25 | 94 | 155 | 117 | 53.9 | 65 | 84 | 108 | 91 | 139 | 100 | 6000 | 1:1 | 40 |
| 5411-32133 | LC-BMT-13-6032IC-DM-NZ3000 | 内部Int. 外部Ext. | 60 | ER25 | 94 | 155 | 117 | 53.9 | 65 | 84 | 108 | 91 | 139 | 100 | 6000 | 1:1 | 40 |

BMT徑向雙ER動力刀座

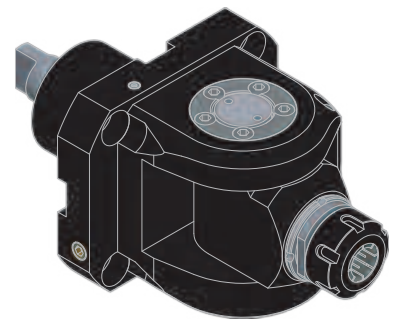
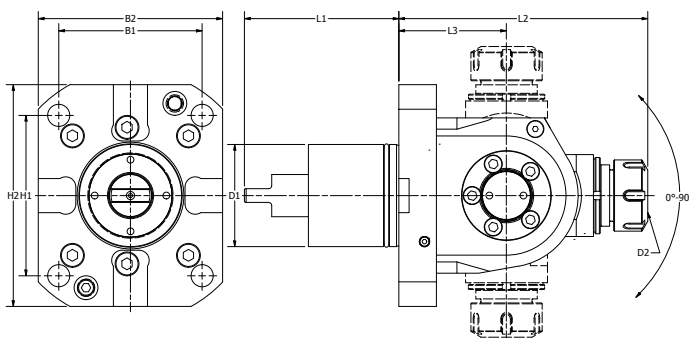
DMG MORI NL3000 DOUBLE RIGHT ANGLE DRILL-MILLING LIVE TOOL



| MOLDER NO. | 規格 SPEC. | 出水方式 COOLANT | D1 | D2 | H1 | H2 | H3 | B1 | B2 | L1 | L2 | L3 | MAX. REVOLUTION | GEAR RATIO | N.m |
|------------|----------------------------|-----------------|----|------|----|-----|-------|----|-----|----|-----|----|--------------------|---------------|-----|
| 5411-32136 | LC-BMT-15-6032OC-DM-NZ3000 | 外部Ext. | 60 | ER32 | 94 | 130 | 103.9 | 84 | 108 | 91 | 131 | 90 | 10000 | 1:1 | 60 |
| 5411-32139 | LC-BMT-15-6040OC-DM-NZ3000 | 外部Ext. | 60 | ER40 | 94 | 130 | 106 | 84 | 108 | 91 | 131 | 90 | 10000 | 1:1 | 60 |

BMT可調90度動力刀座

DMG MORI NL3000 ADJUSTABLE ANGLE LIVE TOOL



| MOLDER NO. | 規格 SPEC. | 出水方式 COOLANT | D1 | D2 | H1 | H2 | B1 | B2 | L1 | L2 | L3 | MAX. REVOLUTION | GEAR RATIO | N.m |
|------------|----------------------------|------------------|----|------|----|-----|----|-----|----|-------|----|--------------------|---------------|-----|
| 5411-32142 | LC-BMT-21-6025OC-DM-NZ3000 | 外部Ext. | 60 | ER25 | 94 | 130 | 84 | 108 | 91 | 145.2 | 78 | 10000 | 1:1 | 25 |
| 5411-32145 | LC-BMT-21-6025IC-DM-NZ3000 | 内部Int. 外部Ext. | 60 | ER25 | 94 | 130 | 84 | 108 | 91 | 145.2 | 78 | 10000 | 1:1 | 25 |

DMG MORI MSL150 MACHINE CONNECTIONS

COMPATIBLE MACHINES

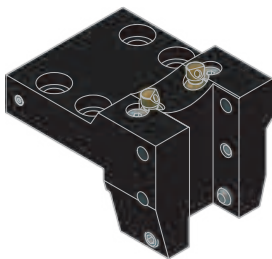
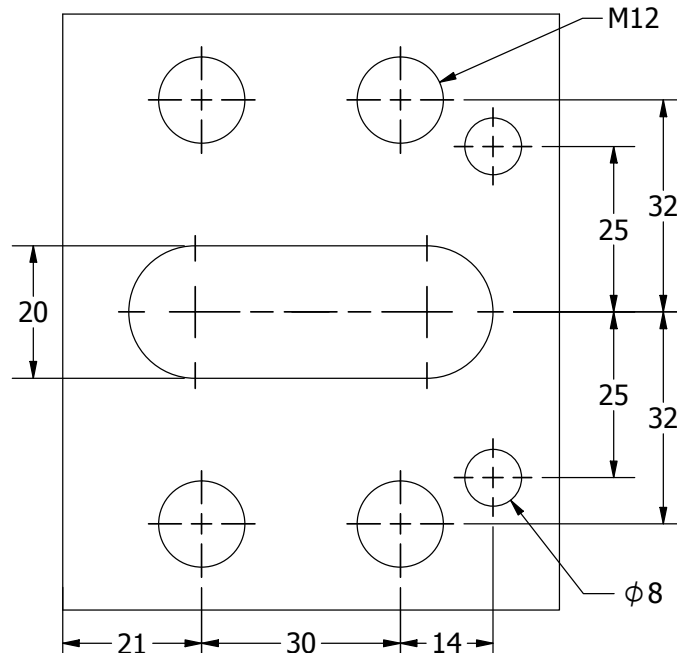
ALX 1500-2500 (static turret only)

CL 1500, 2000 (12 ST)

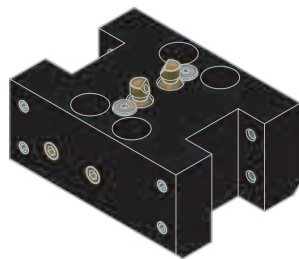
Mori Seiki DuraTurn 1530

Mori Seiki SL/ZL 150 – 154

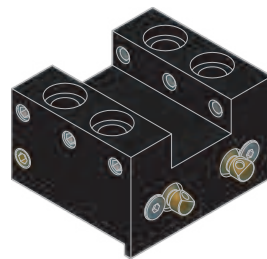
Mori Seiki SL/ZL 150 – 154 MC/SMC/Y/SY



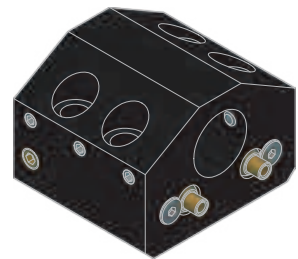
OD TURNING HOLDER .. pg 33



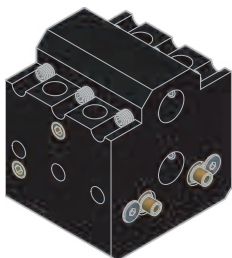
DOUBLE OD TURNING HOLDER pg 33



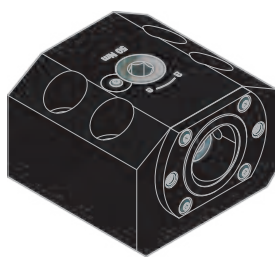
OD FACING HOLDER pg 34



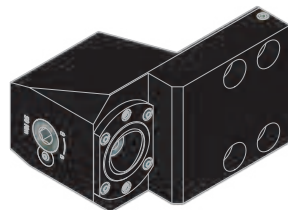
BORING BAR HOLDER . pg 34



DOUBLE ID HOLDER pg 35



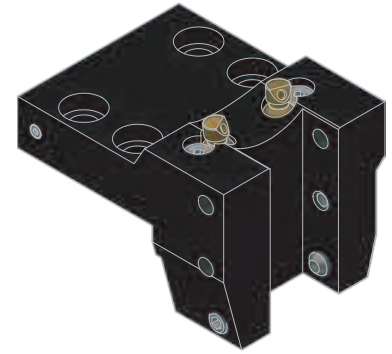
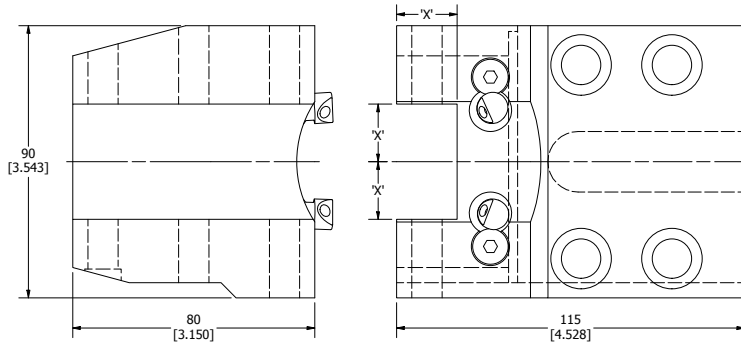
CAPTO ID HOLDER pg 35



CAPTO OD HOLDER pg 36

BMT外徑車刀座

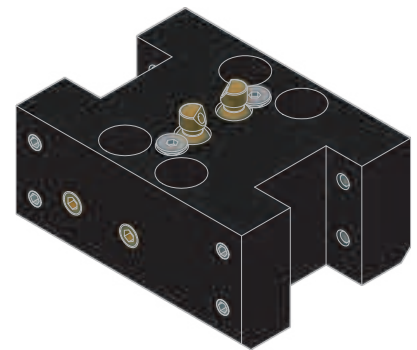
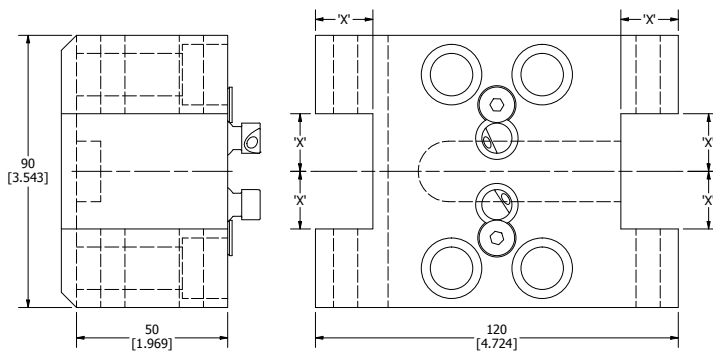
DMG MORI MSL150 OD TURNING HOLDER



| MOLDER NO. | 規格 SPEC. | DIMENSION 'X' |
|------------|------------------|---------------|
| 5699-90292 | LC-DM-MSL150-3/4 | 3/4" |
| 5699-90295 | LC-DM-MSL150-20 | 20mm |

BMT雙外徑車刀座

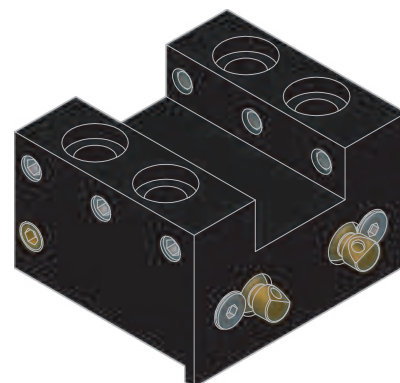
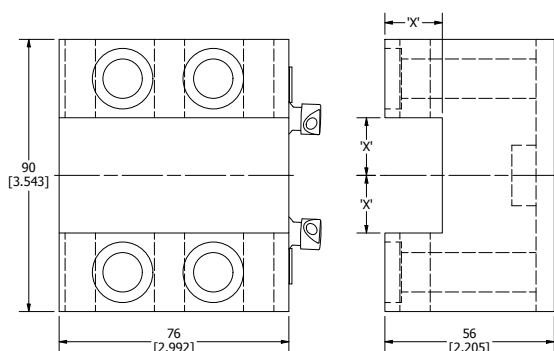
DMG MORI MSL150 DOUBLE OD TURNING HOLDER



| MOLDER NO. | 規格 SPEC. | DIMENSION 'X' |
|------------|---------------------|---------------|
| 5699-90298 | LC-DM-MSL150-3/4-DB | 3/4" |
| 5699-90301 | LC-DM-MSL150-20-DB | 20mm |

BMT端面車刀座

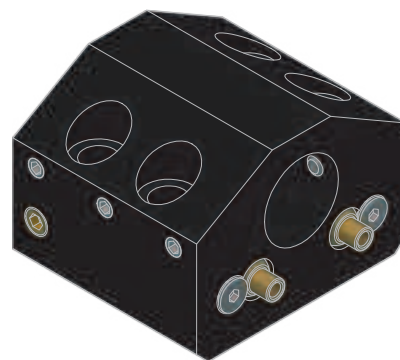
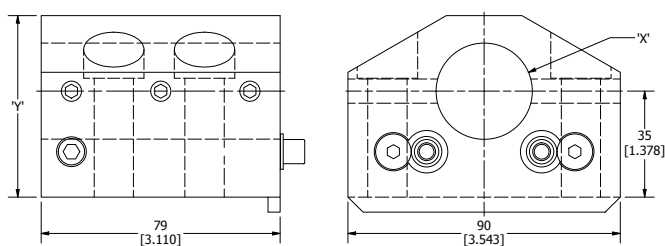
DMG MORI MSL150 OD FACING HOLDER



| MOLDER NO. | 規格 SPEC. | DIMENSION 'X' |
|------------|---------------------|---------------|
| 5699-90304 | LC-DM-MSL150-3/4-FA | 3/4" |
| 5699-90307 | LC-DM-MSL150-20-FA | 20mm |

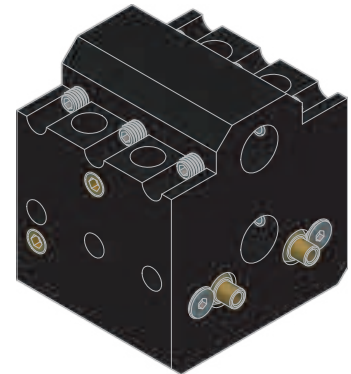
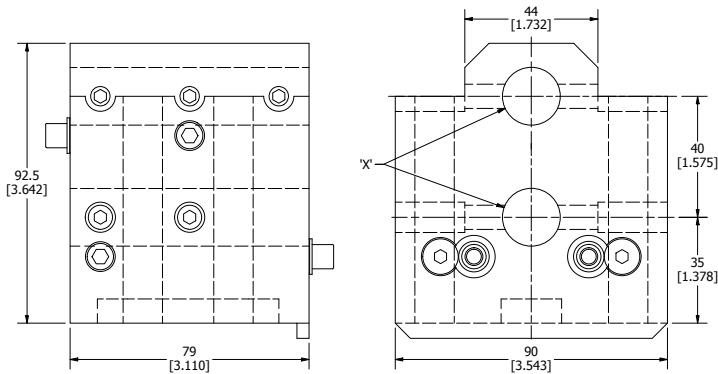
BMT内徑搪刀座

DMG MORI MSL150 BORING BAR HOLDER



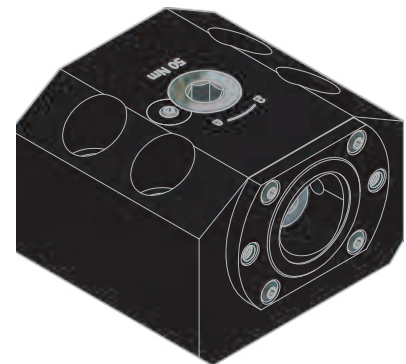
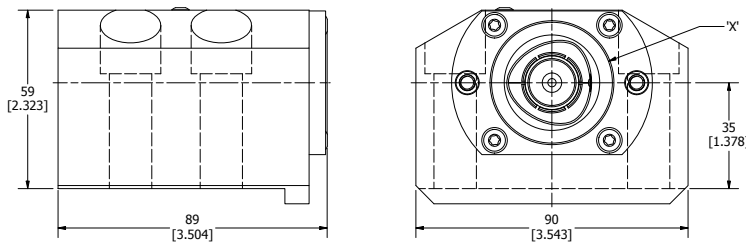
| MOLDER NO. | 規格 SPEC. | DIMENSION 'X' | DIMENSION 'Y' |
|------------|------------------------|---------------|---------------|
| 5699-90310 | LC-DM-MSL150-3/4-H35 | 3/4" | 2.362" |
| 5699-90313 | LC-DM-MSL150-1-H35 | 1.000" | 2.362" |
| 5699-90316 | LC-DM-MSL150-1-1/4-H35 | 1 1/4" | 2.362" |
| 5699-90319 | LC-DM-MSL150-1-1/2-H35 | 1 1/2" | 2.362" |
| 5699-90322 | LC-DM-MSL150-2-H35 | 2.000" | 2.677" |
| 5699-90325 | LC-DM-MSL150-20-H35 | 20mm | 60mm |
| 5699-90328 | LC-DM-MSL150-25-H35 | 25mm | 60mm |
| 5699-90331 | LC-DM-MSL150-32-H35 | 32mm | 60mm |
| 5699-90334 | LC-DM-MSL150-40-H35 | 40mm | 60mm |
| 5699-90337 | LC-DM-MSL150-50-H35 | 50mm | 68mm |

BMT雙內徑搪刀座 DMG MORI MSL150 DOUBLE ID HOLDER



| MOLDER NO. | 規格 SPEC. | DIMENSION 'X' |
|------------|---------------------------|---------------|
| 5699-90340 | LC-DM-MSL150-3/4-H3540-DB | 3/4" |
| 5699-90343 | LC-DM-MSL150-1-H3540-DB | 1.000" |
| 5699-90346 | LC-DM-MSL150-20-H3540-DB | 20mm |
| 5699-90349 | LC-DM-MSL150-25-H3540-DB | 25mm |

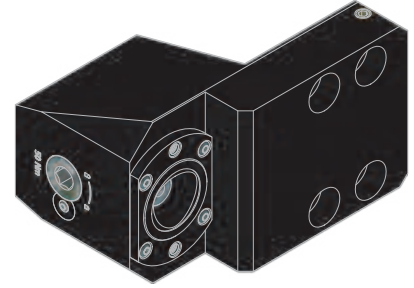
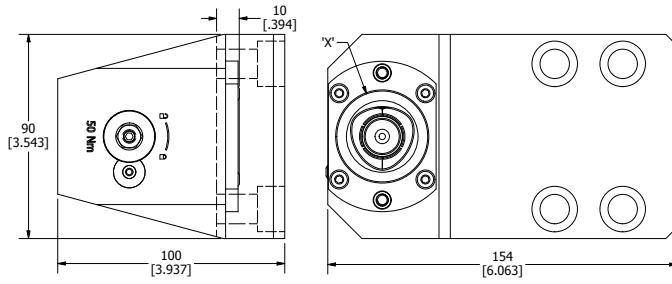
BMT/CAPTO內徑刀座 DMG MORI MSL150 CAPTO ID HOLDER



| MOLDER NO. | 規格 SPEC. | TOOL CLAMPING | DIMENSION 'X' |
|------------|---------------------|---------------|---------------|
| 5699-90352 | LC-DM-MSL150-C4-H35 | C4 | 40mm |

BMT/CAPTO外徑刀座

DMG MORI MSL150 CAPTO OD HOLDER



| MOLDER NO. | 規格 SPEC. | TOOL CLAMPING | DIMENSION 'X' |
|------------|-----------------|---------------|---------------|
| 5699-90355 | LC-DM-MSL150-C4 | C4 | 40mm |

DMG MORI MSL20-30 MACHINE CONNECTIONS

COMPATIBLE MACHINES

CL 1500, 2000 (8/10 ST)

CTX 310 V1

NLX 2500 (static turret only)

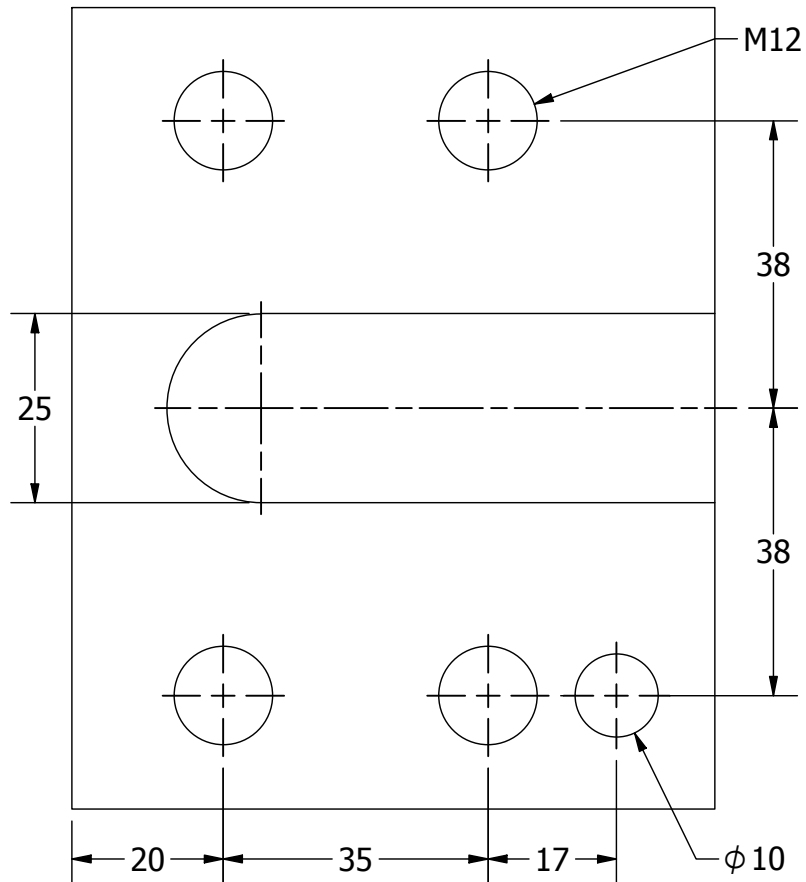
NRX 2000 (static turret only)

VL-253

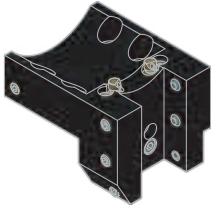
Mori Seiki DuraTurn 2030, 2050, 2550

Mori Seiki SL/ZL 200 – 254 MC/SMC/Y/SY

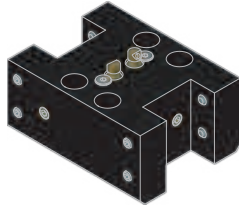
Mori Seiki SL/ZL 2500 MC/SMC/Y/SY



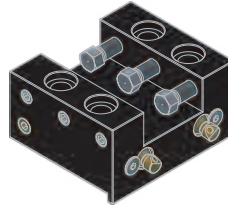
DMG MORI MSL20-30



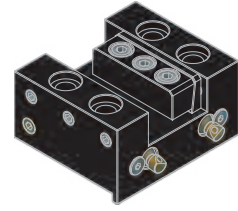
OD TURNING HOLDER pg 39



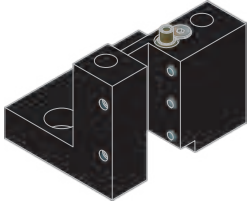
DOUBLE OD TURNING HOLDER pg 39



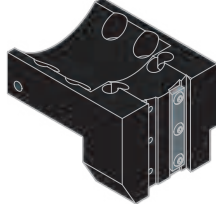
OD FACING HOLDER JACK SCREWS pg 40



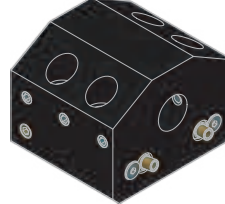
OD FACING HOLDER WEDGE pg 40



CUT OFF HOLDER pg 41



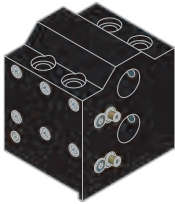
CUT OFF BLADE HOLDER pg 41



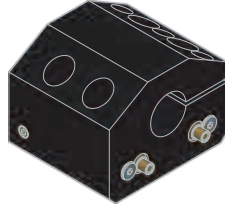
BORING BAR HOLDER ... pg 42



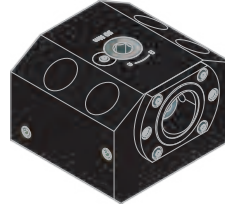
EXTENDED BOING BAR HOLDER pg 42



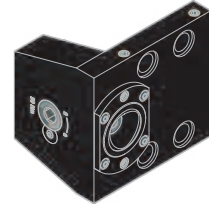
DOUBLE BORING BAR HOLDER pg 43



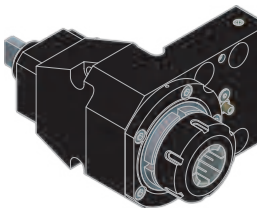
SPLIT BORING BAR HOLDER pg 43



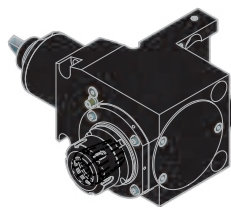
CAPTO ID HOLDER pg 44



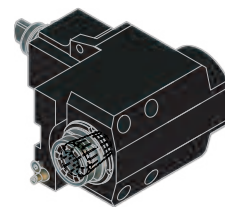
CAPTO OD HOLDER pg 44



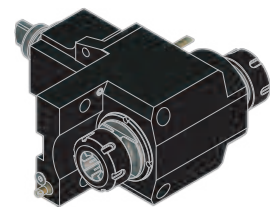
STRAIGHT DRILL - MILLING LIVE TOOL pg 45



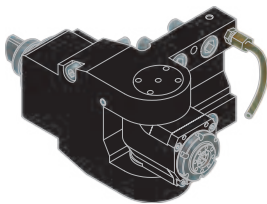
RIGHT ANGLE DRILL - MILLING LIVE TOOL pg 45



RIGHT ANGLE DRILL - MILLING SUB - SPINDLE LIVE TOOL pg 46



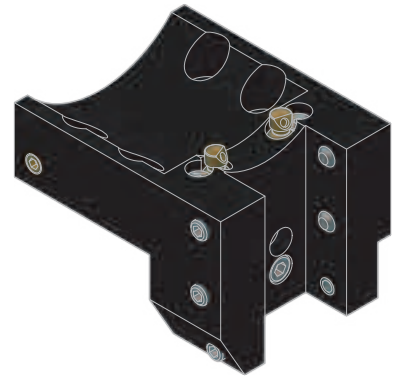
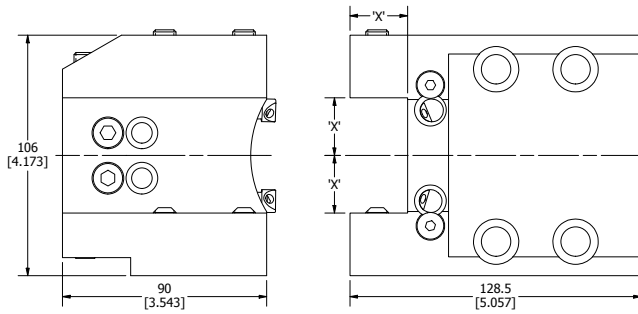
DOUBLE RIGHT ANGLE DRILL - MILLING LIVE TOOL pg 46



ADJUSTABLE ANGLE LIVE TOOL pg 47

BMT外徑車刀座

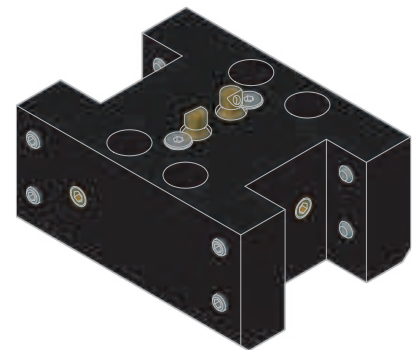
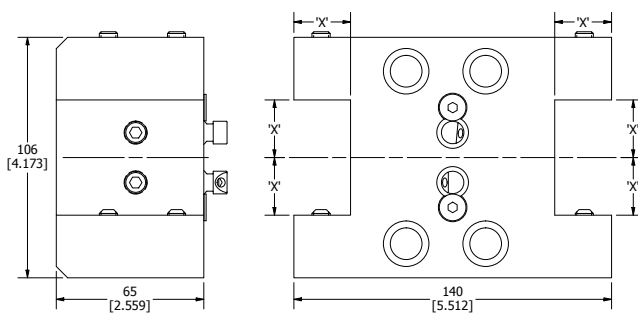
DMG MORI MSL20-30 OD TURNING HOLDER



| MOLDER NO. | 規格 SPEC. | DIMENSION 'X' |
|------------|-------------------|---------------|
| 5699-90370 | LC-DM-MSL20/30-1 | 1.000" |
| 5699-90373 | LC-DM-MSL20/30-25 | 25mm |

BMT雙外徑車刀座

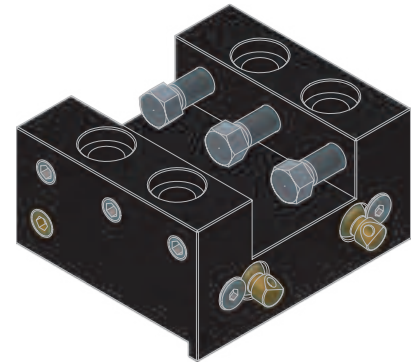
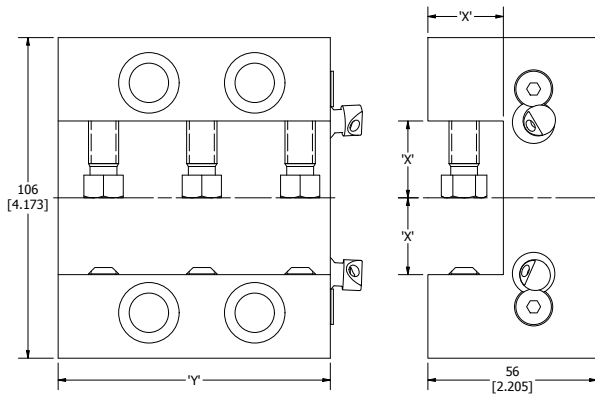
DMG MORI MSL20-30 DOUBLE OD TURNING HOLDER



| MOLDER NO. | 規格 SPEC. | DIMENSION 'X' |
|------------|----------------------|---------------|
| 5699-90376 | LC-DM-MSL20/30-1-DB | 1.000" |
| 5699-90379 | LC-DM-MSL20/30-25-DB | 25mm |

BMT端面車刀座 (止動螺絲)

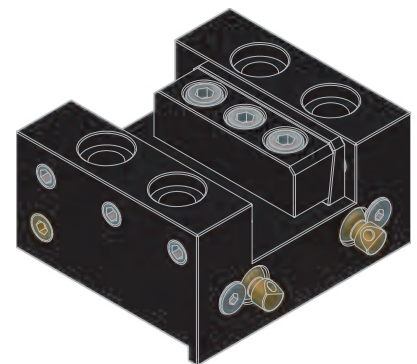
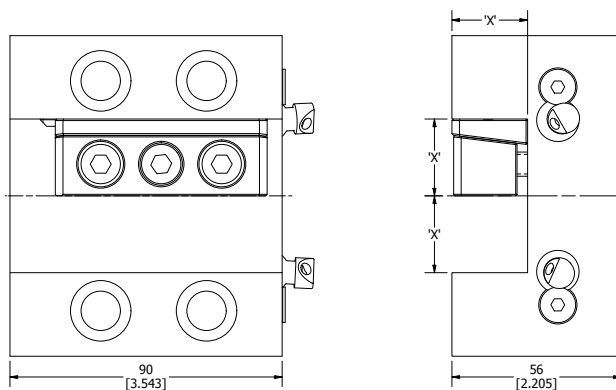
DMG MORI MSL20-30 OD FACING HOLDER JACK SCREWS



| MOLDER NO. | 規格 SPEC. | DIMENSION 'X' | DIMENSION 'Y' |
|------------|---------------------------|---------------|---------------|
| 5699-90382 | LC-DM-MSL20/30-1-FA-W | 1.000" | 3.543" |
| 5699-90385 | LC-DM-MSL20/30-1-FA-W-EX | 1.000" | 6.299" |
| 5699-90388 | LC-DM-MSL20/30-25-FA-W | 25mm | 90mm |
| 5699-90391 | LC-DM-MSL20/30-25-FA-W-EX | 25mm | 160mm |

BMT端面車刀座

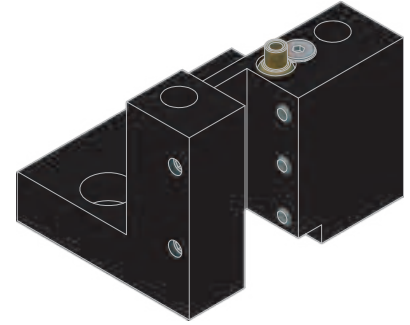
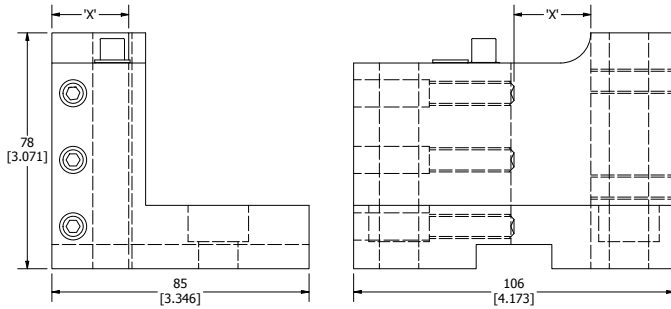
DMG MORI MSL20-30 OD FACING HOLDER WEDGE



| MOLDER NO. | 規格 SPEC. | DIMENSION 'X' | DIMENSION 'Y' |
|------------|----------------------|---------------|---------------|
| 5699-90394 | LC-DM-MSL20/30-1-FA | 1.000" | 3.543" |
| 5699-90397 | LC-DM-MSL20/30-25-FA | 25mm | 90.0 |

BMT外徑切斷車刀座

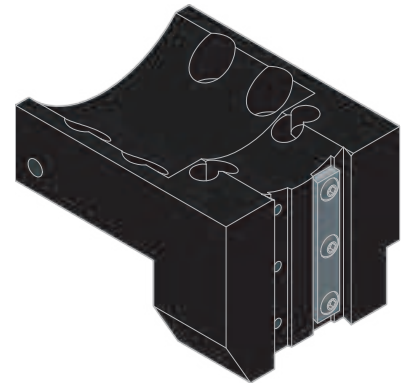
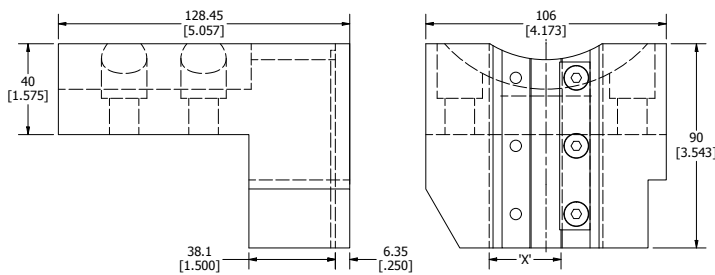
DMG MORI MSL20-30 CUT OFF HOLDER



| MOLDER NO. | 規格 SPEC. | DIMENSION 'X' |
|------------|----------------------|---------------|
| 5699-90400 | LC-DM-MSL20/30-1-CU | 1.000" |
| 5699-90403 | LC-DM-MSL20/30-25-CU | 25mm |

BMT切斷刀板座

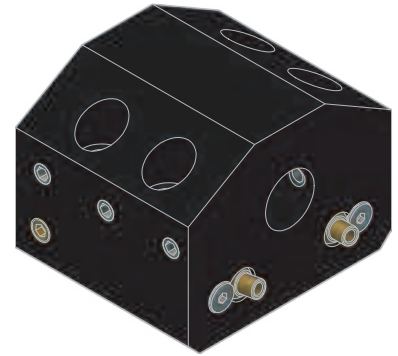
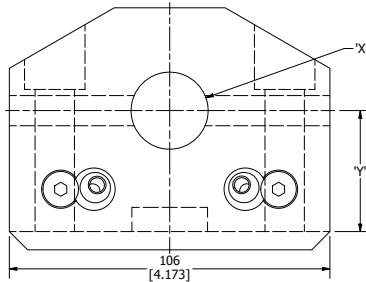
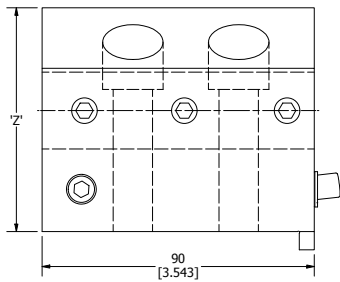
DMG MORI MSL20-30 CUT OFF BLADE HOLDER



| MOLDER NO. | 規格 SPEC. | DIMENSION 'X' |
|------------|--------------------------|---------------|
| 5699-90406 | LC-DM-MSL20/30-1-1/4-CUB | 1 1/4" |
| 5699-90409 | LC-DM-MSL20/30-32-CUB | 32mm |

BMT内徑搪刀座

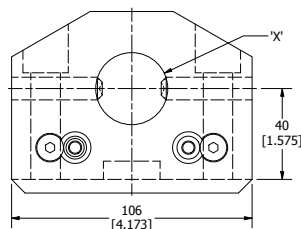
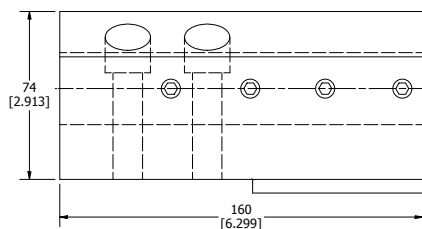
DMG MORI MSL20-30 BORING BAR HOLDER



| MOLDER NO. | 規格 SPEC. | DIMENSION 'X' | DIMENSION 'Y' | DIMENSION 'Z' |
|------------|-----------------------------|---------------|---------------|---------------|
| 5699-90412 | LC-DM-MSL20/30-3/4-H1.575 | 3/4" | 1.575" | 2.913" |
| 5699-90415 | LC-DM-MSL20/30-1-H1.575 | 1.000" | 1.575" | 2.913" |
| 5699-90418 | LC-DM-MSL20/30-1-1/4-H1.575 | 1 1/4" | 1.575" | 2.913" |
| 5699-90421 | LC-DM-MSL20/30-1-1/2-H1.575 | 1 1/2" | 1.575" | 2.913" |
| 5699-90424 | LC-DM-MSL20/30-1-3/4-H1.575 | 1 3/4" | 1.575" | 2.913" |
| 5699-90427 | LC-DM-MSL20/30-2-H1.575 | 2.000" | 1.575" | 2.913" |
| 5699-90430 | LC-DM-MSL20/30-2-1/2-H2.165 | 2 1/2" | 2.165" | 3.701" |
| 5699-90433 | LC-DM-MSL20/30-20-H40 | 20mm | 40mm | 74mm |
| 5699-90436 | LC-DM-MSL20/30-25-H40 | 25mm | 40mm | 74mm |
| 5699-90439 | LC-DM-MSL20/30-32-H40 | 32mm | 40mm | 74mm |
| 5699-90442 | LC-DM-MSL20/30-40-H40 | 40mm | 40mm | 74mm |
| 5699-90445 | LC-DM-MSL20/30-45-H40 | 45mm | 40mm | 74mm |
| 5699-90448 | LC-DM-MSL20/30-50-H40 | 50mm | 40mm | 74mm |
| 5699-90451 | LC-DM-MSL20/30-65-H55 | 65mm | 55mm | 94mm |

BMT加長内徑搪刀座

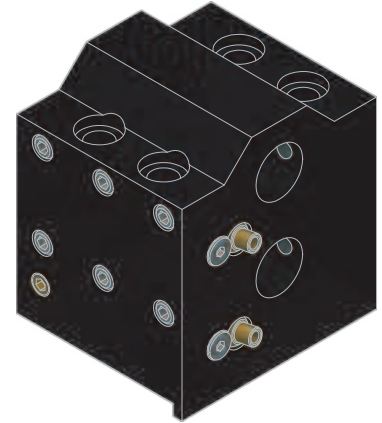
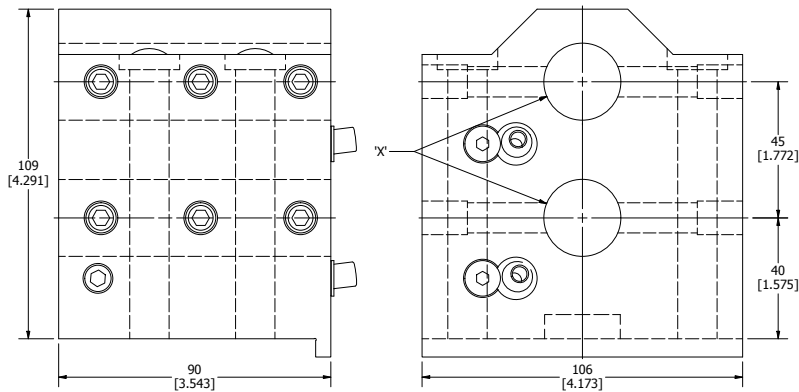
DMG MORI MSL20-30 EXTENDED BORING BAR HOLDER



| MOLDER NO. | 規格 SPEC. | DIMENSION 'X' |
|------------|--------------------------------|---------------|
| 5699-90454 | LC-DM-MSL20/30-1-1/4-H1.575-EX | 1 1/4" |
| 5699-90457 | LC-DM-MSL20/30-1-1/2-H1.575-EX | 1 1/2" |
| 5699-90460 | LC-DM-MSL20/30-32-H40-EX | 32mm |
| 5699-90463 | LC-DM-MSL20/30-40-H40-EX | 40mm |

BMT雙內徑搪刀座

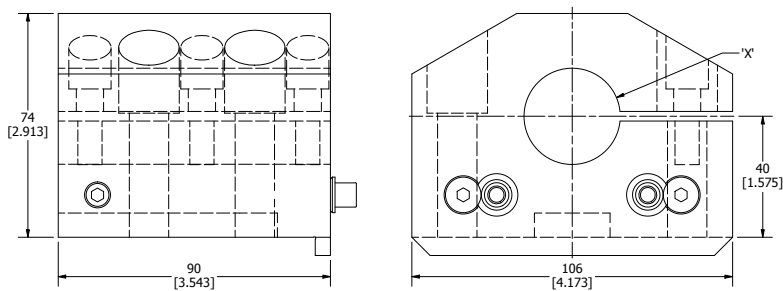
DMG MORI MSL20-30 DOUBLE BORING BAR HOLDER



| MOLDER NO. | 規格 SPEC. | DIMENSION 'X' |
|------------|--------------------------------------|---------------|
| 5699-90466 | LC-DM-MSL20/30-1-H1.575/1.772-DB | 1.000" |
| 5699-90469 | LC-DM-MSL20/30-1-1/4-H1.575/1.772-DB | 1 1/4" |
| 5699-90472 | LC-DM-MSL20/30-25-H4045-DB | 25mm |
| 5699-90475 | LC-DM-MSL20/30-32-H4045-DB | 32mm |

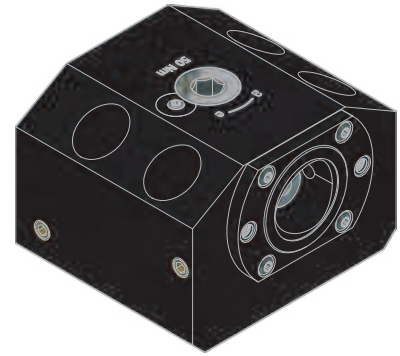
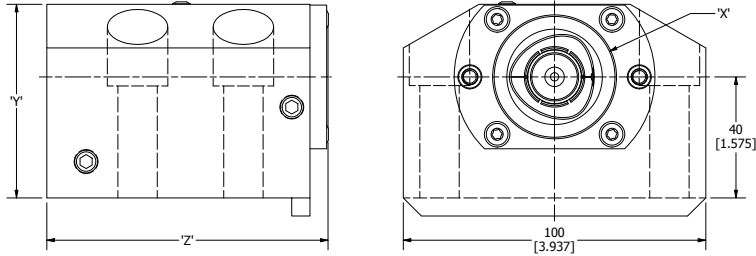
BMT內徑搪刀座

DMG MORI MSL20-30 SPLIT BORING BAR HOLDER



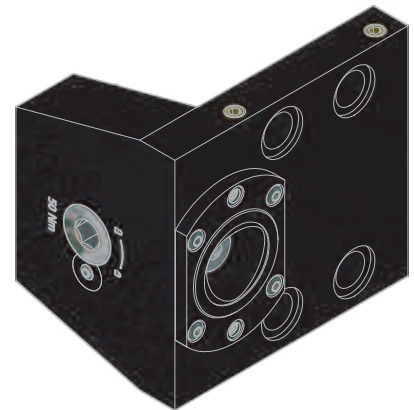
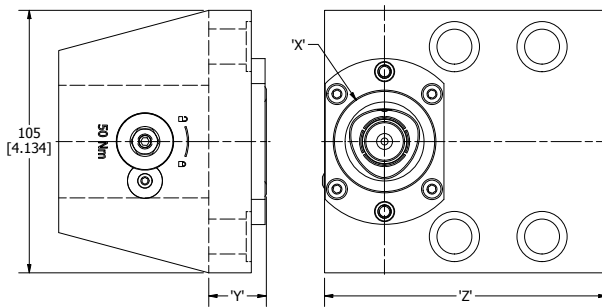
| MOLDER NO. | 規格 SPEC. | DIMENSION 'X' |
|------------|--------------------------------|---------------|
| 5699-90478 | LC-DM-MSL20/30-1-1/4-H1.575-ST | 1 1/4" |
| 5699-90481 | LC-DM-MSL20/30-1-1/2-H1.575-ST | 1 1/2" |
| 5699-90484 | LC-DM-MSL20/30-2-H1.575-ST | 2.000" |
| 5699-90487 | LC-DM-MSL20/30-32-H40-ST | 32mm |
| 5699-90490 | LC-DM-MSL20/30-40-H40-ST | 40mm |
| 5699-90493 | LC-DM-MSL20/30-50-H40-ST | 50mm |

BMT/CAPTO内徑刀座 DMG MORI MSL20-30 CAPTO ID HOLDER



| MOLDER NO. | 規格 SPEC. | TOOL CLAMPING | DIMENSION 'X' | DIMENSION 'Y' | DIMENSION 'Z' |
|------------|--------------------------|---------------|---------------|---------------|---------------|
| 5699-90496 | LC-DM-MSL20/30-C4-H40 | C4 | 40mm | 64mm | 93mm |
| 5699-90499 | LC-DM-MSL20/30-C5-H40 | C5 | 50mm | 72mm | 100mm |
| 5699-90502 | LC-DM-MSL20/30-C5-H40-EX | C5 | 50mm | 72mm | 152mm |

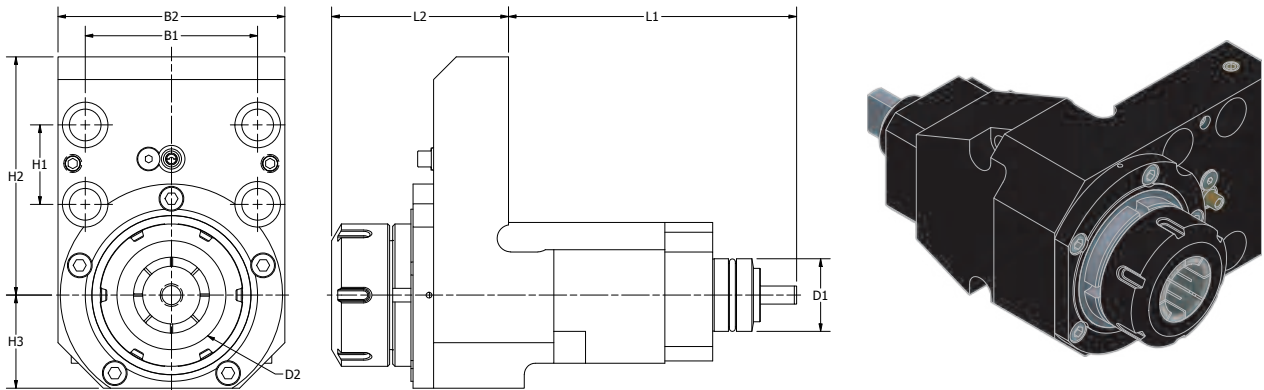
BMT/CAPTO外徑刀座 DMG MORI MSL20-30 CAPTO OD HOLDER



| MOLDER NO. | 規格 SPEC. | TOOL CLAMPING | DIMENSION 'X' | DIMENSION 'Y' | DIMENSION 'Z' |
|------------|-------------------|---------------|---------------|---------------|---------------|
| 5699-90505 | LC-DM-MSL20/30-C4 | C4 | 40mm | 23mm | 113mm |
| 5699-90508 | LC-DM-MSL20/30-C5 | C5 | 50mm | 40mm | 131mm |

BMT軸向ER動力刀座

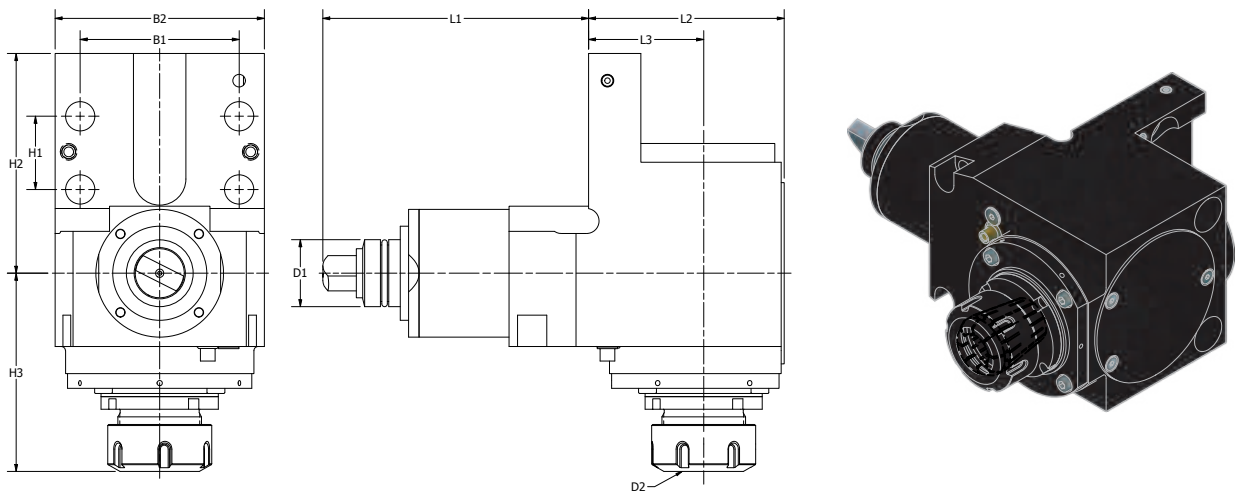
DMG MORI MSL20-30 STRAIGHT DRILL-MILLING LIVE TOOL



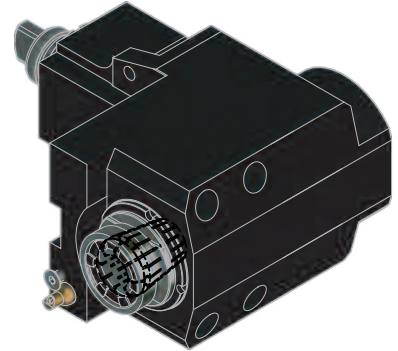
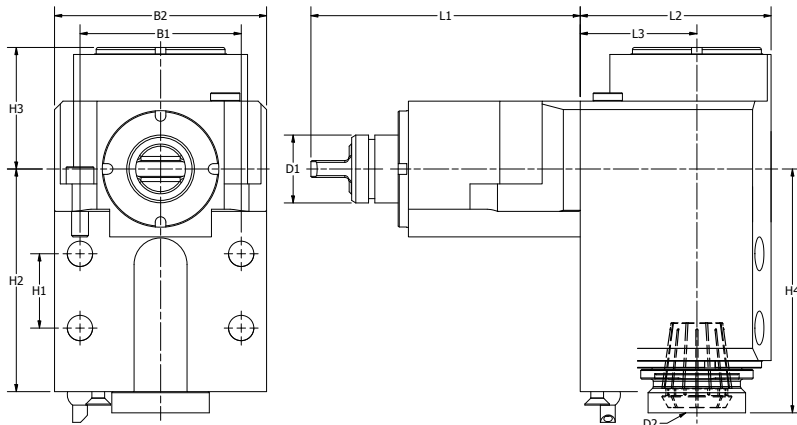
| MOLDER NO. | 規格 SPEC. | 出水方式 COOLANT | D1 | D2 | H1 | H2 | H3 | B1 | B2 | L1 | L2 | MAX. REVOLUTION | GEAR RATIO | N.m | KG |
|------------|------------------------------|-----------------|----|------|----|-----|----|----|-----|-----|------|--------------------|---------------|-----|-----|
| 5411-32160 | LC-BMT-01-3232OC-DM-MSL20/30 | 外部Ext. | 32 | ER32 | 35 | 105 | 35 | 76 | 100 | 127 | 64.5 | 6000 | 1:1 | 50 | 5.5 |
| 5411-32163 | LC-BMT-01-3232IC-DM-MSL20/30 | 内部Int. 6 Bar | 32 | ER32 | 35 | 105 | 35 | 76 | 100 | 127 | 64.5 | 6000 | 1:1 | 50 | 5.5 |

BMT徑向ER動力刀座

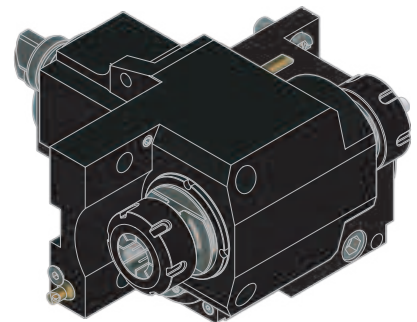
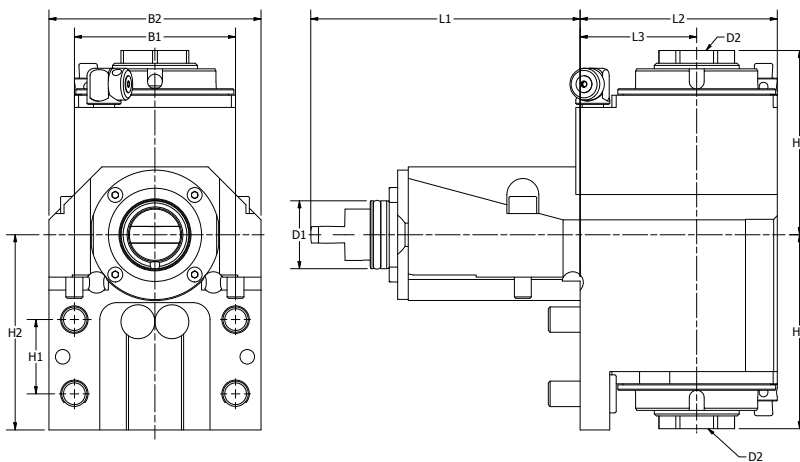
DMG MORI MSL20-30 RIGHT ANGLE DRILL-MILLING LIVE TOOL



| MOLDER NO. | 規格 SPEC. | 出水方式 COOLANT | D1 | D2 | H1 | H2 | H3 | B1 | B2 | L1 | L2 | L3 | MAX. REVOLUTION | GEAR RATIO | N.m | KG |
|------------|------------------------------|-----------------|----|------|----|-----|----|----|-----|-----|----|----|--------------------|---------------|-----|----|
| 5411-32166 | LC-BMT-11-3232OC-DM-MSL20/30 | 外部Ext. | 32 | ER32 | 35 | 105 | 92 | 76 | 100 | 127 | 96 | 55 | 6000 | 1:1 | 50 | 10 |
| 5411-32169 | LC-BMT-11-3232IC-DM-MSL20/30 | 内部Int. 6 Bar | 32 | ER32 | 35 | 105 | 92 | 76 | 100 | 127 | 96 | 55 | 6000 | 1:1 | 50 | 10 |

BMT副主軸徑向ER動力刀座 (中心出水)**DMG MORI MSL20-30 RIGHT ANGLE DRILL-MILLING SUB-SPINDLE LIVE TOOL**

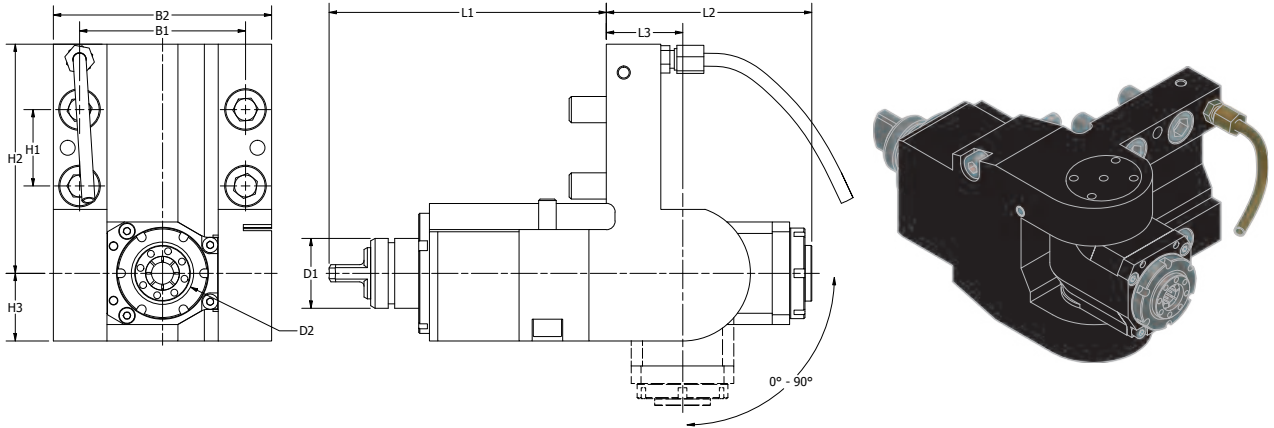
| MOLDER NO. | 規格 SPEC. | 出水方式 COOLANT | D1 | D2 | H1 | H2 | H3 | H4 | B1 | B2 | L1 | L2 | L3 | MAX. REVOLUTION | GEAR RATIO | N.m | KG |
|------------|---------------------------------|-----------------|----|------|----|-----|----|-----|----|-----|-----|----|----|--------------------|---------------|-----|----|
| 5411-32172 | LC-BMT-11-3232OC-SP-DM-MSL20/30 | 外部Ext. | 32 | ER32 | 35 | 105 | 61 | 115 | 76 | 100 | 127 | 90 | 55 | 6000 | 1:1 | 50 | 10 |

BMT徑向雙ER動力刀座**DMG MORI MSL20-30 DOUBLE RIGHT ANGLE DRILL-MILLING LIVE TOOL**

| MOLDER NO. | 規格 SPEC. | 出水方式 COOLANT | D1 | D2 | H1 | H2 | H3 | H4 | B1 | B2 | L1 | L2 | L3 | MAX. REVOLUTION | GEAR RATIO | N.m | KG |
|------------|------------------------------|-----------------|----|------|----|-----|----|-----|----|-----|-----|----|----|--------------------|---------------|-----|----|
| 5411-32175 | LC-BMT-15-3232OC-DM-MSL20/30 | 外部Ext. | 32 | ER32 | 35 | 105 | 92 | 105 | 76 | 100 | 127 | 96 | 55 | 6000 | 1:1 | 50 | 14 |

BMT可調90度動力刀座

DMG MORI MSL20-30 ADJUSTABLE ANGLE LIVE TOOL



| MOLDER NO. | 規格 SPEC. | 出水方式 COOLANT | D1 | D2 | H1 | H2 | H3 | B1 | B2 | L1 | L2 | L3 | MAX. REVOLUTION | GEAR RATIO | N.m | KG |
|------------|------------------------------|-----------------|----|------|----|-----|----|----|-----|-----|-----|----|--------------------|---------------|-----|-----|
| 5411-32178 | LC-BMT-21-3225OC-DM-MSL20/30 | 外部Ext. | 32 | ER25 | 35 | 105 | 31 | 76 | 100 | 127 | 130 | 45 | 6000 | 1:1 | 25 | 7.5 |

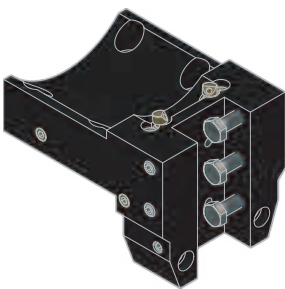
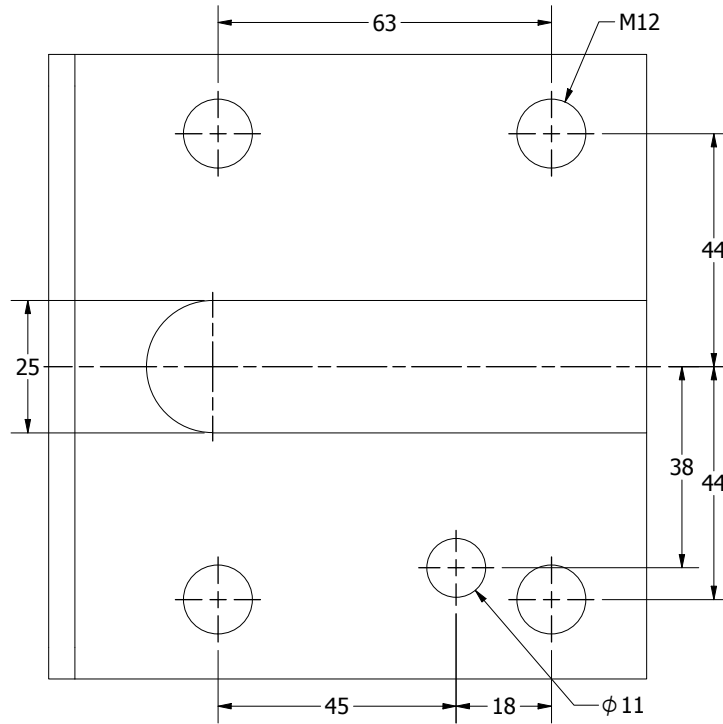
DMG MORI MSL35 MACHINE CONNECTIONS

COMPATIBLE MACHINES

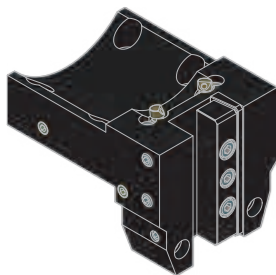
Mori Seiki SL 35, 35B

Mori Seiki TL40 (10 Station Turret)

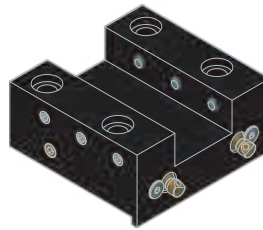
Mori Seiki ZL 3



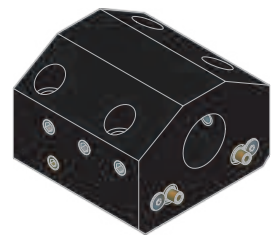
OD TURNING HOLDER JACK
SCREWS pg 49



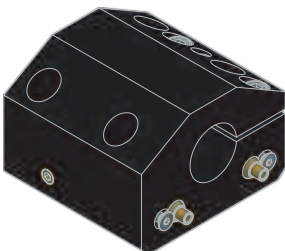
OD TURNING HOLDER
WEDGE pg 49



OD FACING HOLDER pg 50



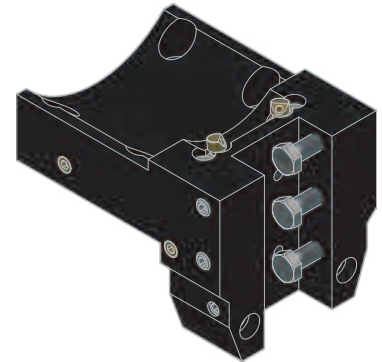
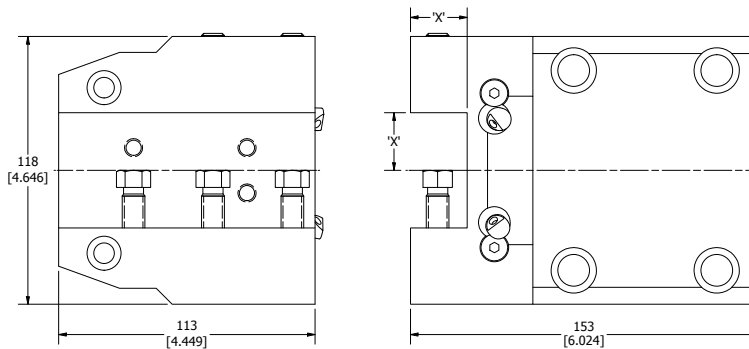
BORING BAR
HOLDER pg 50



SPLIT BORING BAR
HOLDER pg 51

BMT外徑車刀座(止動螺絲)

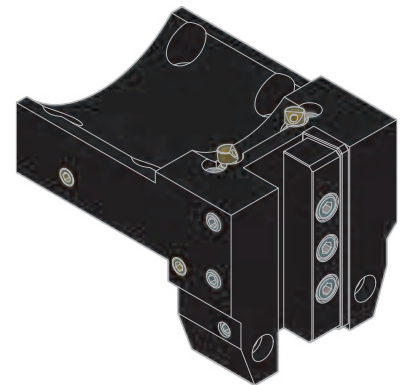
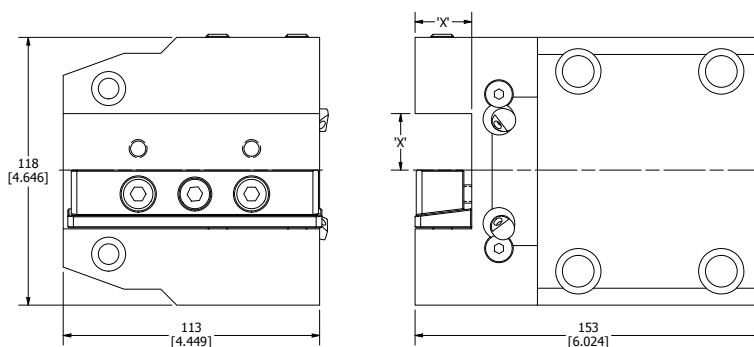
DMG MORI MSL35 OD TURNING HOLDER JACK SCREWS



| MOLDER NO. | 規格 SPEC. | DIMENSION 'X' |
|------------|------------------|---------------|
| 5699-90520 | LC-DM-MSL35-1-W | 1.000" |
| 5699-90523 | LC-DM-MSL35-25-W | 25mm |

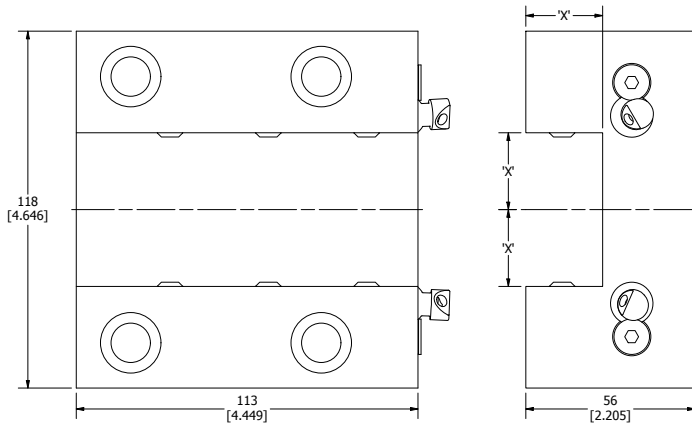
BMT外徑車刀座

DMG MORI MSL35 OD TURNING HOLDER WEDGE



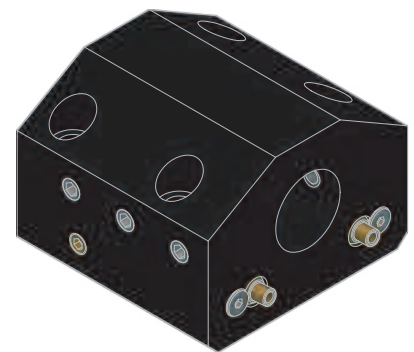
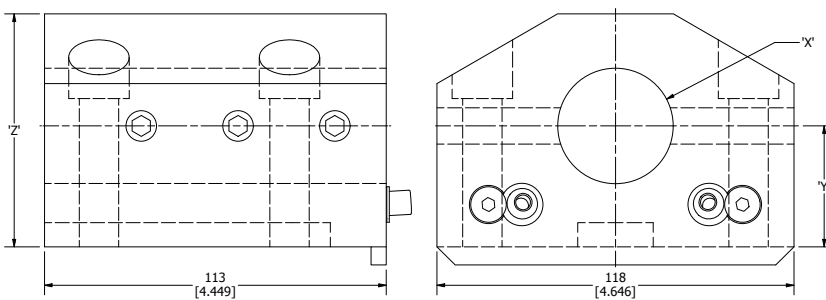
| MOLDER NO. | 規格 SPEC. | DIMENSION 'X' |
|------------|----------------|---------------|
| 5699-90526 | LC-DM-MSL35-1 | 1.000" |
| 5699-90529 | LC-DM-MSL35-25 | 25.0 |

BMT端面車刀座 DMG MORI MSL35 OD FACING HOLDER



| MOLDER NO. | 規格 SPEC. | DIMENSION 'X' |
|------------|-------------------|---------------|
| 5699-90532 | LC-DM-MSL35-1-FA | 1.000" |
| 5699-90535 | LC-DM-MSL35-25-FA | 25mm |

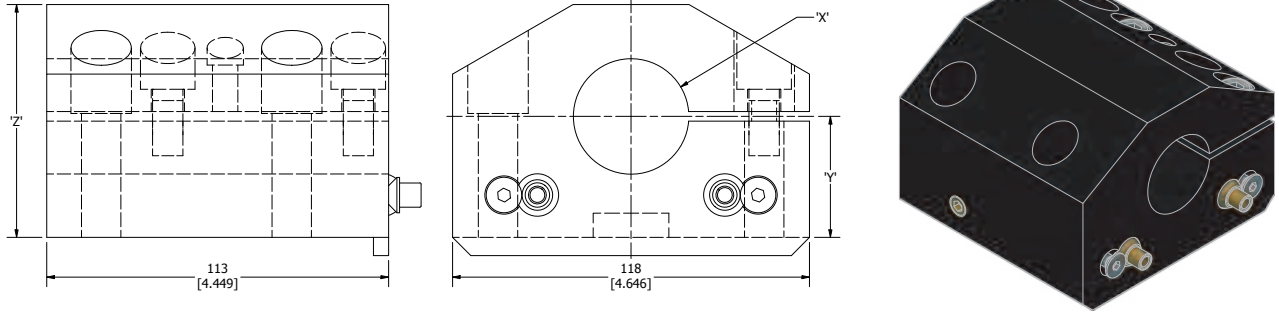
BMT内徑搪刀座 DMG MORI MSL35 BORING BAR HOLDER



| MOLDER NO. | 規格 SPEC. | DIMENSION 'X' | DIMENSION 'Y' | DIMENSION 'Z' |
|------------|--------------------------|---------------|---------------|---------------|
| 5699-90538 | LC-DM-MSL35-1-1/2-H1.575 | 1 1/2" | 1.575" | 3.031" |
| 5699-90541 | LC-DM-MSL35-2-H1.575 | 2.000" | 1.575" | 3.031" |
| 5699-90544 | LC-DM-MSL35-2-1/2-H2.000 | 2 1/2" | 2.000" | 3.622" |
| 5699-90547 | LC-DM-MSL35-40-H40 | 40mm | 40mm | 77mm |
| 5699-90550 | LC-DM-MSL35-50-H40 | 50mm | 40mm | 77mm |
| 5699-90553 | LC-DM-MSL35-65-H50 | 65mm | 50mm | 92mm |

BMT内徑搪刀座

DMG MORI MSL35 SPLIT BORING BAR HOLDER



| MOLDER NO. | 規格 SPEC. | DIMENSION 'X' | DIMENSION 'Y' | DIMENSION 'Z' |
|------------|-----------------------------|---------------|---------------|---------------|
| 5699-90556 | LC-DM-MSL35-1-1/2-H1.575-ST | 1 1/2" | 1.575" | 3.031" |
| 5699-90559 | LC-DM-MSL35-2-H1.575-ST | 2.000" | 1.575" | 3.031" |
| 5699-90562 | LC-DM-MSL35-2-1/2-H2.000-ST | 2 1/2" | 2.000" | 3.622" |
| 5699-90565 | LC-DM-MSL35-40-H40-ST | 40mm | 40mm | 77mm |
| 5699-90568 | LC-DM-MSL35-50-H40-ST | 50mm | 40mm | 77mm |
| 5699-90571 | LC-DM-MSL35-65-H50-ST | 65mm | 50mm | 92mm |

DMG MORI MSL403 MACHINE CONNECTIONS

COMPATIBLE MACHINES

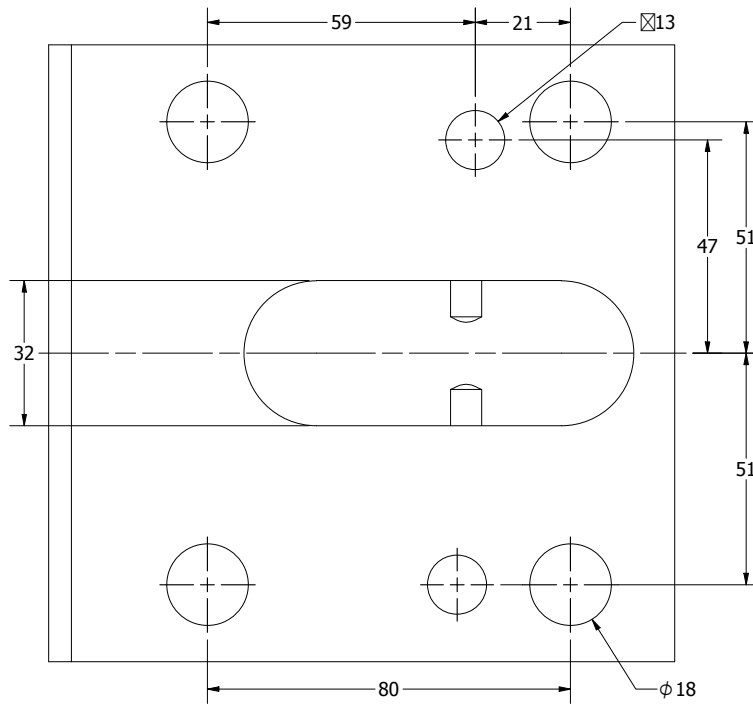
Mori Seiki SL 400, 403, 405

Mori Seiki SL 45

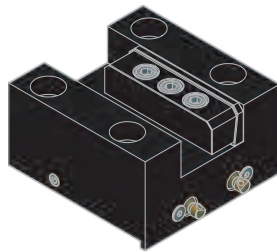
Mori Seiki VL 55

Mori Seiki ZL 35

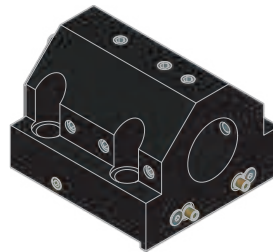
Mori Seiki ZL 45



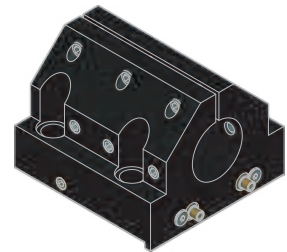
OD TURNING HOLDER pg 53



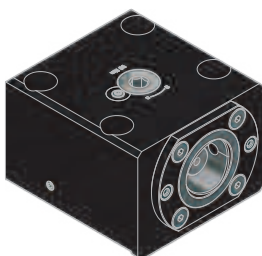
OD FACING HOLDER pg 53



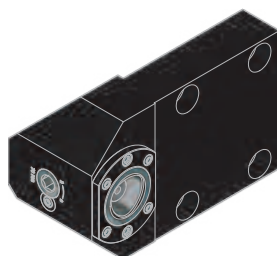
BORING BAR HOLDER pg 54



SPLIT BORING BAR HOLDER pg 54



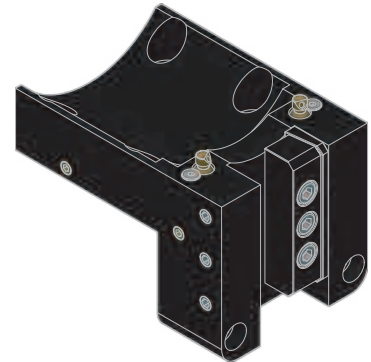
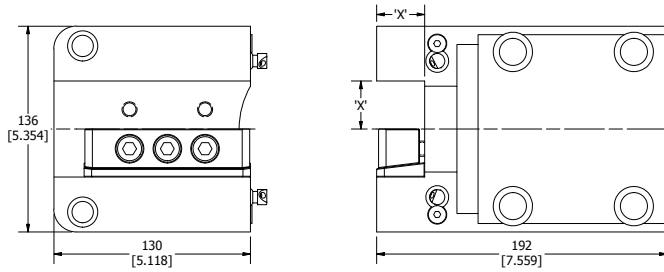
CAPTO ID HOLDER pg 55



CAPTO OD HOLDER pg 55

BMT外徑車刀座

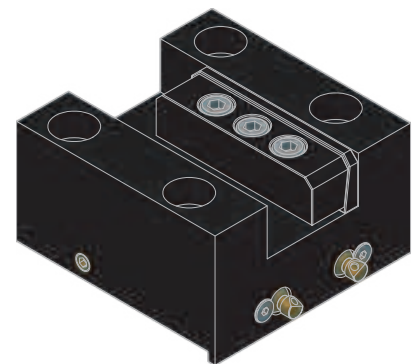
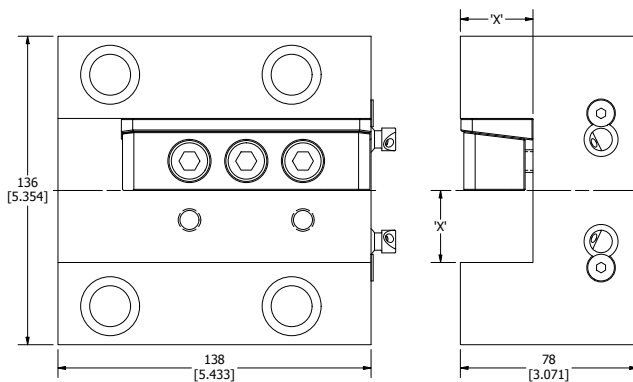
DMG MORI MSL403 OD TURNING HOLDER



| MOLDER NO. | 規格 SPEC. | DIMENSION 'X' |
|------------|--------------------|---------------|
| 5699-90580 | LC-DM-MSL403-1-1/4 | 1 1/4" |
| 5699-90583 | LC-DM-MSL403-32 | 32mm |

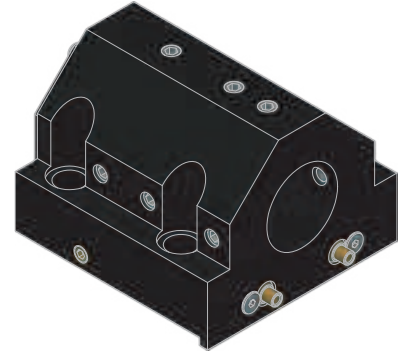
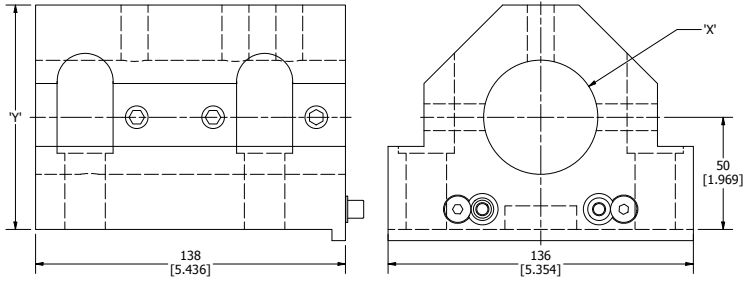
BMT端面車刀座

DMG MORI MSL403 OD FACING HOLDER



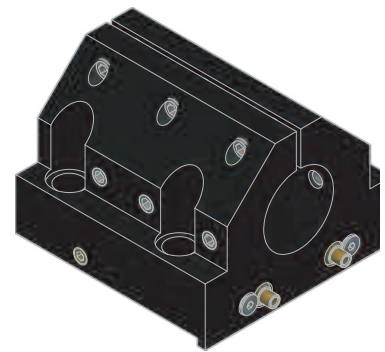
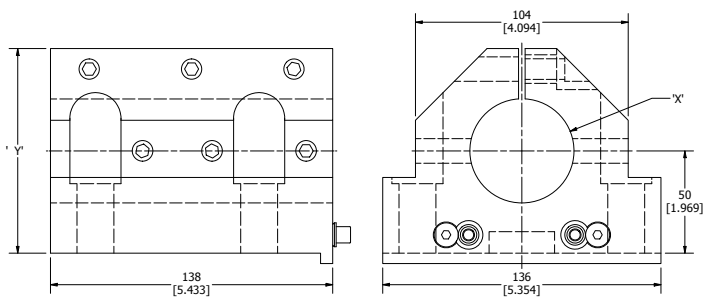
| MOLDER NO. | 規格 SPEC. | DIMENSION 'X' |
|------------|-----------------------|---------------|
| 5699-90586 | LC-DM-MSL403-1-1/4-FA | 1 1/4" |
| 5699-90589 | LC-DM-MSL403-32MM-FA | 32mm |

BMT内徑搪刀座 DMG MORI MSL403 BORING BAR HOLDER



| MOLDER NO. | 規格 SPEC. | DIMENSION 'X' | DIMENSION 'Y' |
|------------|---------------------------|---------------|---------------|
| 5699-90592 | LC-DM-MSL403-1-1/4-H1.969 | 1 1/4" | 3.346" |
| 5699-90595 | LC-DM-MSL403-1-1/2-H1.969 | 1 1/2" | 3.937" |
| 5699-90598 | LC-DM-MSL403-2-H1.969 | 2.000" | 3.937" |
| 5699-90601 | LC-DM-MSL403-2-1/2-H1.969 | 2 1/2" | 3.937" |
| 5699-90604 | LC-DM-MSL403-3-H1.969 | 3.000" | 3.937" |
| 5699-90607 | LC-DM-MSL403-32-H50 | 32mm | 85mm |
| 5699-90610 | LC-DM-MSL403-40-H50 | 40mm | 100mm |
| 5699-90613 | LC-DM-MSL403-50-H50 | 50mm | 100mm |
| 5699-90616 | LC-DM-MSL403-65-H50 | 65mm | 100mm |
| 5699-90619 | LC-DM-MSL403-80-H50 | 80mm | 100mm |

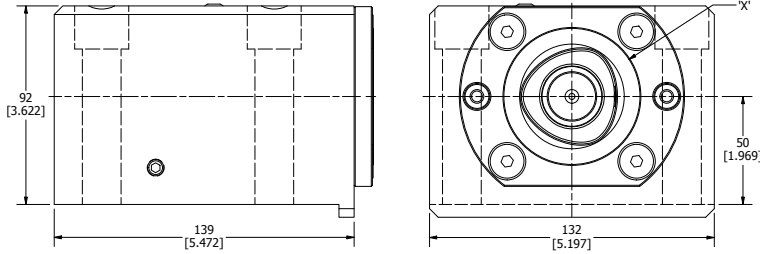
BMT外徑車刀座 DMG MORI MSL403 SPLIT BORING BAR HOLDER



| MOLDER NO. | 規格 SPEC. | DIMENSION 'X' | DIMENSION 'Y' |
|------------|------------------------------|---------------|---------------|
| 5699-90622 | LC-DM-MSL403-2-H1.969-ST | 2.000" | 3.937" |
| 5699-90625 | LC-DM-MSL403-2-1/2-H1.969-ST | 2 1/2" | 3.937" |
| 5699-90628 | LC-DM-MSL403-3-H1.969-ST | 3.000" | 4.331" |
| 5699-90631 | LC-DM-MSL403-50-H50-ST | 50mm | 100mm |
| 5699-90634 | LC-DM-MSL403-65-H50-ST | 65mm | 100mm |
| 5699-90637 | LC-DM-MSL403-80-H50-ST | 80mm | 110mm |

BMT/CAPTO内徑刀座

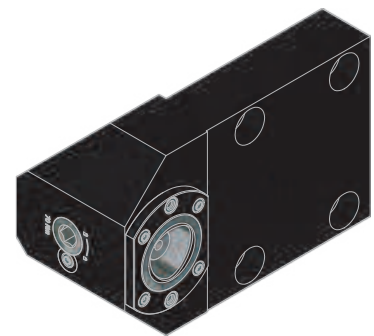
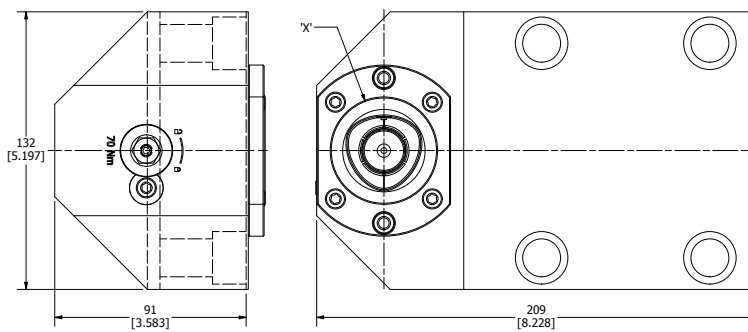
DMG MORI MSL403 CAPTO ID HOLDER



| MOLDER NO. | 規格 SPEC. | TOOL CLAMPING | DIMENSION 'X' |
|------------|---------------------|---------------|---------------|
| 5699-90640 | LC-DM-MSL403-C6-H50 | C6 | 63mm |

BMT/CAPTO外徑刀座

DMG MORI MSL403 CAPTO OD HOLDER



| MOLDER NO. | 規格 SPEC. | TOOL CLAMPING | DIMENSION 'X' |
|------------|-----------------|---------------|---------------|
| 5699-90643 | LC-DM-MSL403-C6 | C5 | 50mm |

DMG MORI MSL603 MACHINE CONNECTIONS

COMPATIBLE MACHINES

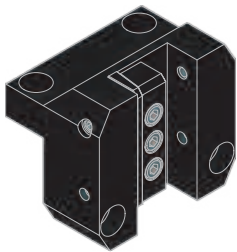
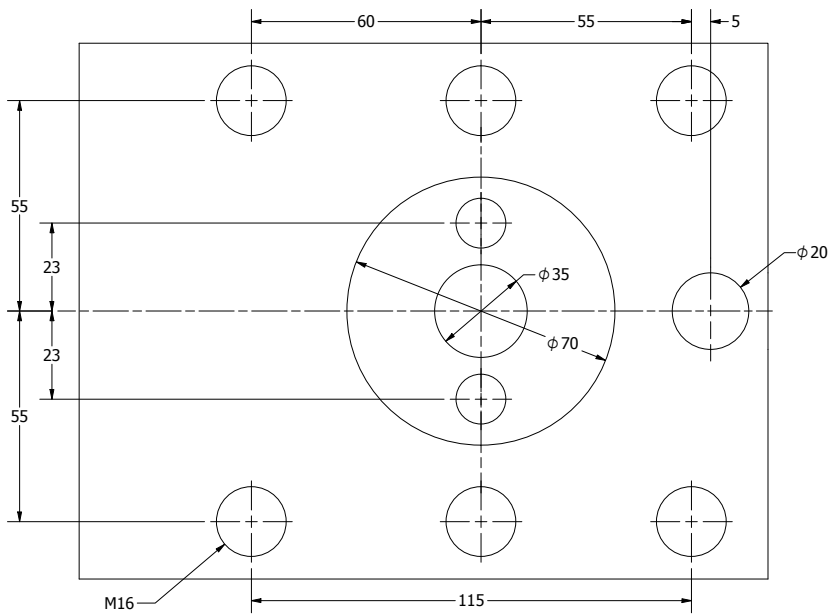
Mori Seiki MSL 75

Mori Seiki SL 45

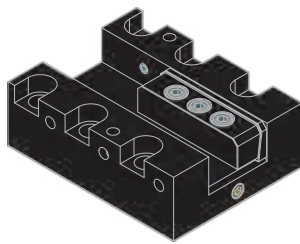
Mori Seiki SL 6

Mori Seiki SL 600, 603

Mori Seiki SL 65



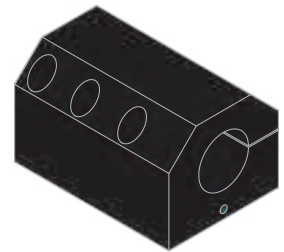
OD TURNING HOLDER .. pg 57



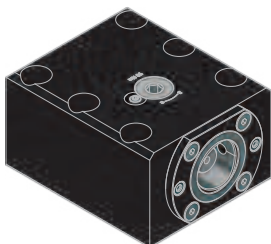
OD FACING HOLDER pg 57



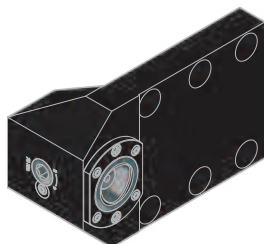
BORING BAR HOLDER ... pg 58



SPLIT BORING BAR HOLDER pg 58

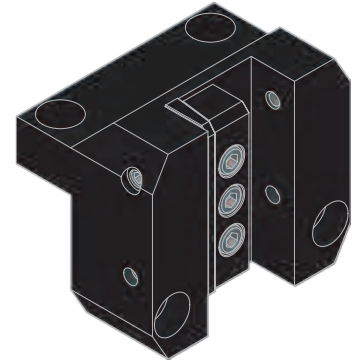
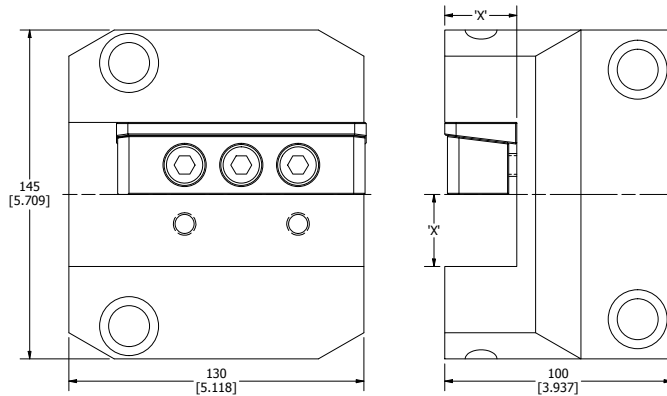


CAPTO ID HOLDER pg 59



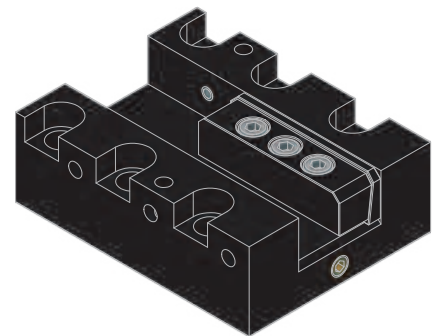
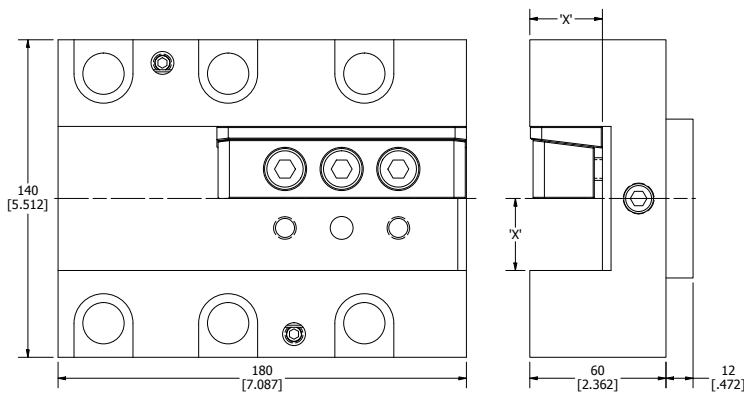
CAPTO OD HOLDER pg 59

BMT外徑車刀座 DMG MORI MSL603 OD TURNING HOLDER



| MOLDER NO. | 規格 SPEC. | DIMENSION 'X' |
|------------|--------------------|---------------|
| 5699-90652 | LC-DM-MSL603-1-1/4 | 1 1/4" |
| 5699-90655 | LC-DM-MSL603-32 | 32mm |

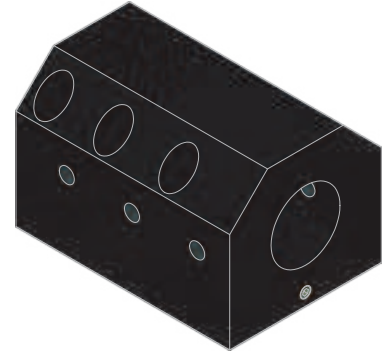
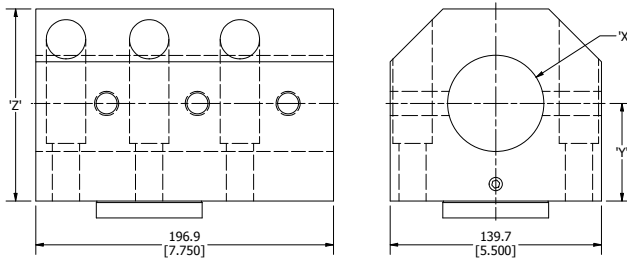
BMT端面車刀座 DMG MORI MSL603 OD FACING HOLDER



| MOLDER NO. | 規格 SPEC. | DIMENSION 'X' |
|------------|-----------------------|---------------|
| 5699-90658 | LC-DM-MSL603-1-1/4-FA | 1 1/4" |
| 5699-90661 | LC-DM-MSL603-32-FA | 32mm |

BMT内徑搪刀座

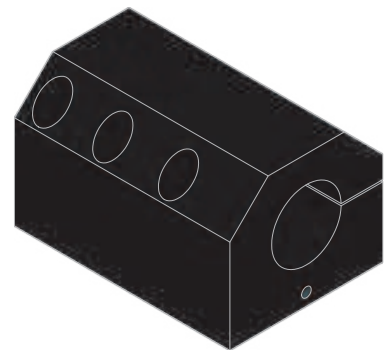
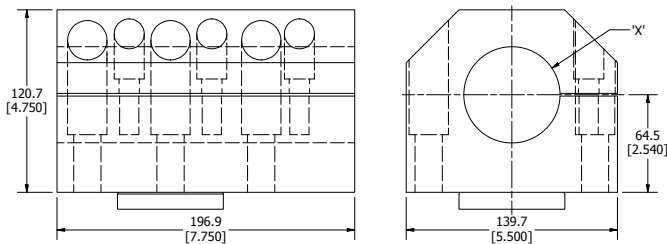
DMG MORI MSL603 BORING BAR HOLDER



| MOLDER NO. | 規格 SPEC. | DIMENSION 'X' | DIMENSION 'Y' | DIMENSION 'Z' |
|------------|---------------------------|---------------|---------------|---------------|
| 5699-90664 | LC-DM-MSL603-2-H2.540 | 2.000" | 2.540" | 5.000" |
| 5699-90667 | LC-DM-MSL603-2-1/2-H2.540 | 2 1/2" | 2.540" | 5.000" |
| 5699-90670 | LC-DM-MSL603-3-H2.540 | 3.000" | 2.540" | 5.000" |
| 5699-90673 | LC-DM-MSL603-4-H2.540 | 4.000" | 3.150" | 5.500" |
| 5699-90676 | LC-DM-MSL603-50-H64 | 50mm | 64.52mm | 127mm |
| 5699-90679 | LC-DM-MSL603-65-H64 | 65mm | 64.52mm | 127mm |
| 5699-90682 | LC-DM-MSL603-80-H64 | 80mm | 64.52mm | 127mm |
| 5699-90685 | LC-DM-MSL603-100-H80 | 100mm | 80mm | 139.7mm |

BMT内徑搪刀座

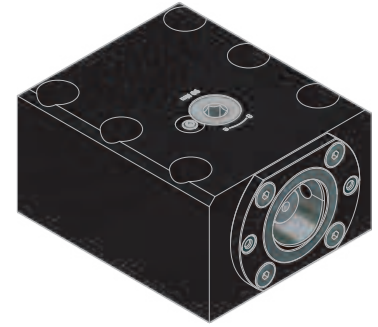
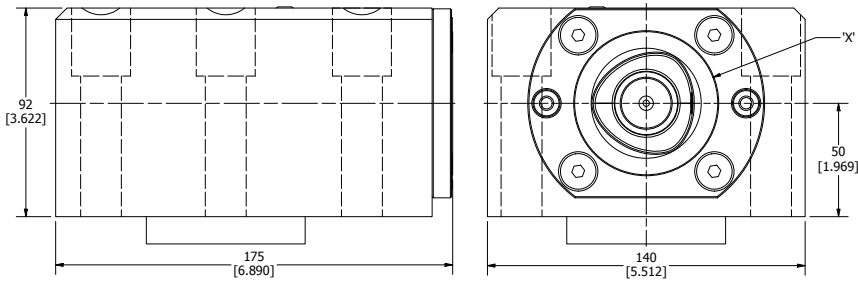
DMG MORI MSL603 SPLIT BORING BAR HOLDER



| MOLDER NO. | 規格 SPEC. | DIMENSION 'X' |
|------------|------------------------------|---------------|
| 5699-90688 | LC-DM-MSL603-2-1/2-H2.540-ST | 2 1/2" |
| 5699-90691 | LC-DM-MSL603-3-H2.540-ST | 3.000" |
| 5699-90694 | LC-DM-MSL603-65-H64-ST | 65mm |
| 5699-90697 | LC-DM-MSL603-80-H64-ST | 80mm |

BMT/CAPTO内徑刀座

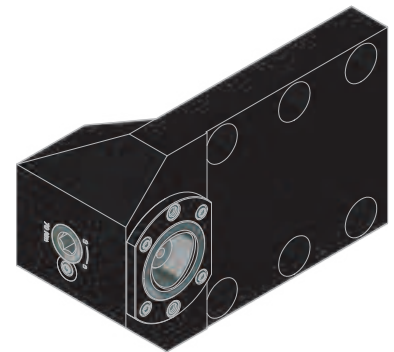
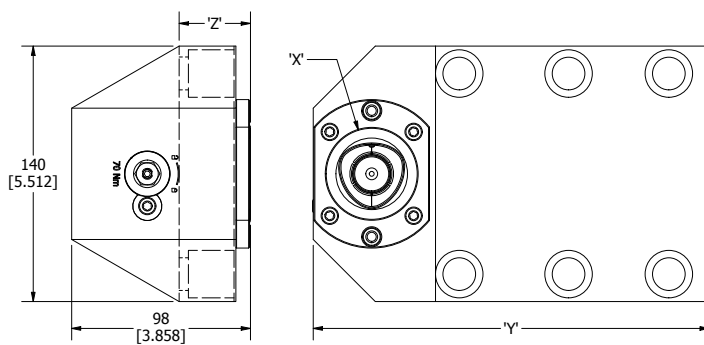
DMG MORI MSL603 CAPTO ID HOLDER



| MOLDER NO. | 規格 SPEC. | TOOL CLAMPING | DIMENSION 'X' |
|------------|---------------------|---------------|---------------|
| 5699-90700 | LC-DM-MSL603-C6-H50 | C6 | 63mm |

BMT/CAPTO外徑車刀座

DMG MORI MSL603 CAPTO OD HOLDER

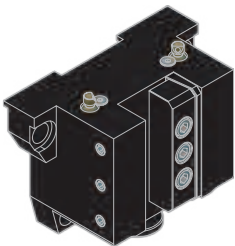
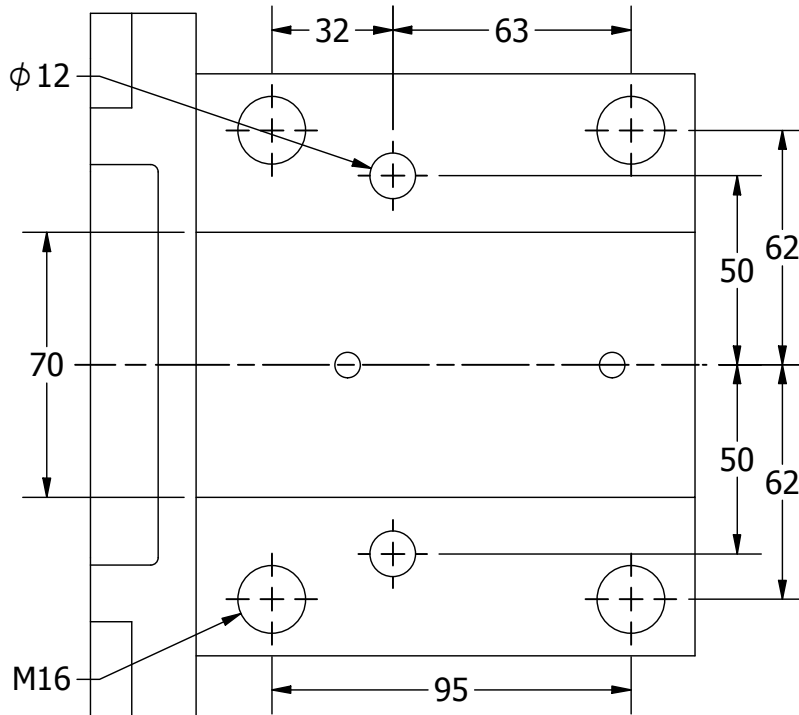


| MOLDER NO. | 規格 SPEC. | TOOL CLAMPING | DIMENSION 'X' | DIMENSION 'Y' | DIMENSION 'Z' |
|------------|-----------------|---------------|---------------|---------------|---------------|
| 5699-90703 | LC-DM-MSL603-C5 | C5 | 50mm | 217mm | 39mm |
| 5699-90706 | LC-DM-MSL603-C6 | C6 | 63mm | 207mm | 40mm |

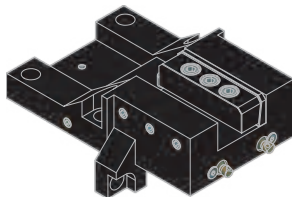
DMG MORI MSL603MC MACHINE CONNECTIONS

COMPATIBLE MACHINES

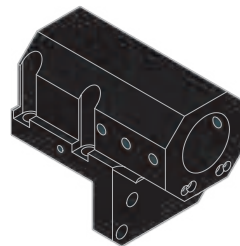
Mori Seiki SL 603 MC



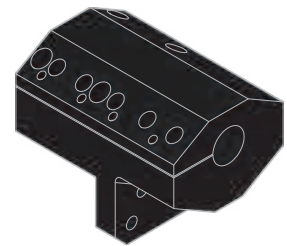
OD TURNING HOLDER pg 61



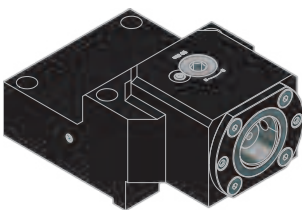
OD FACING HOLDER pg 61



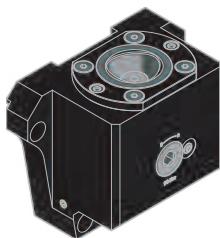
BORING BAR HOLDER ... pg 62



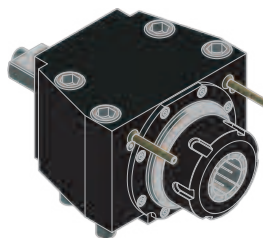
SPLIT BORING BAR HOLDER pg 62



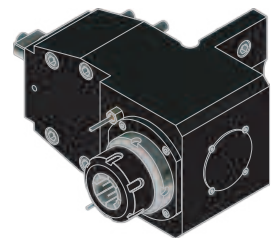
CAPTO ID HOLDER pg 63



CAPTO OD HOLDER pg 63



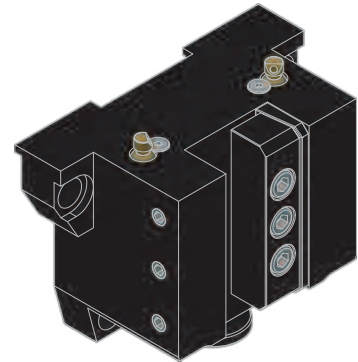
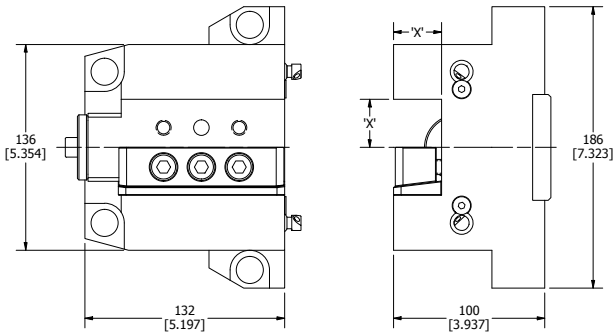
STRAIGHT DRILL-MILLING LIVE TOOL pg 64



RIGHT ANGLE DRILL-MILLING LIVE TOOL pg 64

BMT外徑車刀座

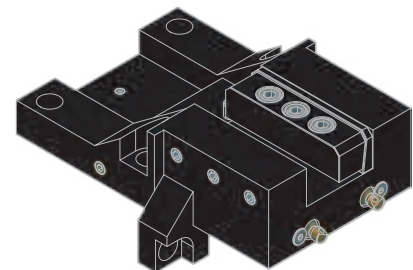
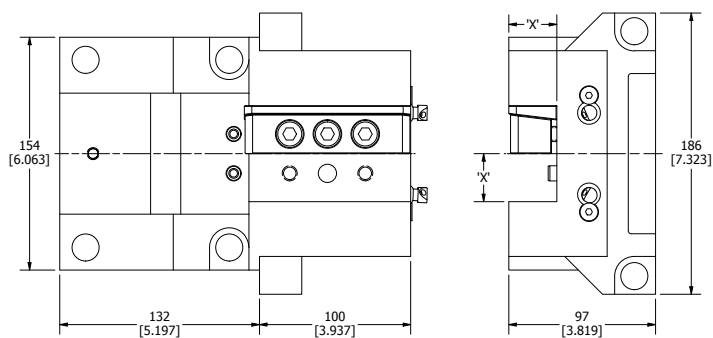
DMG MORI MSL603MC OD TURNING HOLDER



| MOLDER NO. | 規格 SPEC. | DIMENSION 'X' |
|------------|----------------------|---------------|
| 5699-90721 | LC-DM-MSL603MC-1-1/4 | 1 1/4" |
| 5699-90724 | LC-DM-MSL603MC-32 | 32mm |

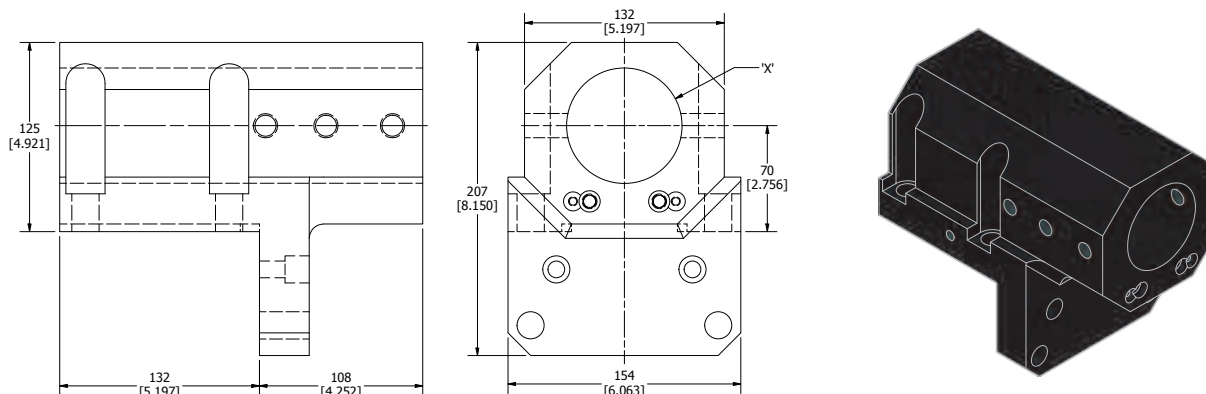
BMT端面車刀座

DMG MORI MSL603MC OD FACING HOLDER



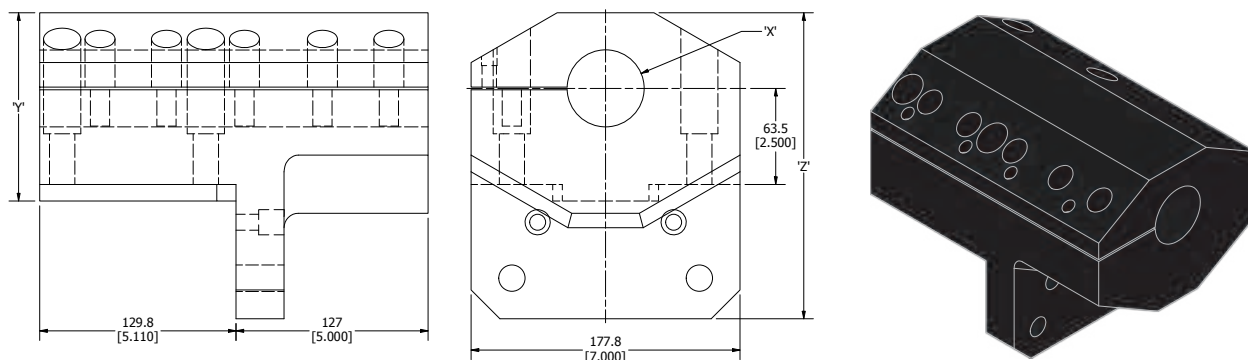
| MOLDER NO. | 規格 SPEC. | DIMENSION 'X' |
|------------|-------------------------|---------------|
| 5699-90727 | LC-DM-MSL603MC-1-1/4-FA | 1 1/4" |
| 5699-90730 | LC-DM-MSL603MC-32-FA | 32mm |

BMT内徑搪刀座 DMG MORI MSL603MC BORING BAR HOLDER



| MOLDER NO. | 規格 SPEC. | DIMENSION 'X' |
|------------|-----------------------------|---------------|
| 5699-90733 | LC-DM-MSL603MC-2-1/2-H2.756 | 2 1/2" |
| 5699-90736 | LC-DM-MSL603MC-3-H2.756 | 3.000" |
| 5699-90739 | LC-DM-MSL603MC-65-H70 | 65mm |
| 5699-90742 | LC-DM-MSL603MC-80-H70 | 80mm |

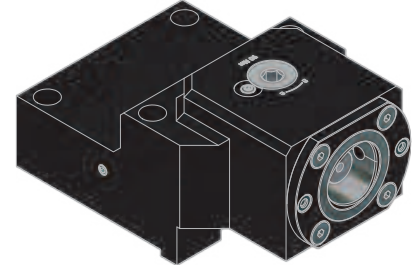
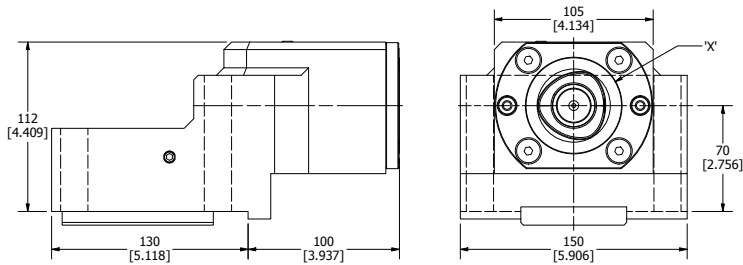
BMT内徑搪刀座 DMG MORI MSL603MC SPLIT BORING BAR HOLDER



| MOLDER NO. | 規格 SPEC. | DIMENSION 'X' | DIMENSION 'Y' | DIMENSION 'Z' |
|------------|--------------------------------|---------------|---------------|---------------|
| 5699-90745 | LC-DM-MSL603MC-2.0-H2.756-ST | 2.000" | 4.900" | 7.967" |
| 5699-90748 | LC-DM-MSL603MC-2-1/2-H2.756-ST | 2 1/2" | 4.900" | 7.967" |
| 5699-90751 | LC-DM-MSL603MC-3-H2.756-ST | 3.000" | 5.095" | 8.163" |
| 5699-90754 | LC-DM-MSL603MC-50-H70-ST | 50mm | 124.42mm | 202.35mm |
| 5699-90757 | LC-DM-MSL603MC-65-H70-ST | 65mm | 124.42mm | 202.35mm |
| 5699-90760 | LC-DM-MSL603MC-80-H70-ST | 80mm | 129.422mm | 207.35mm |

BMT/CAPTO内徑刀座

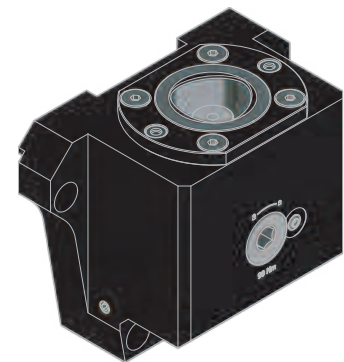
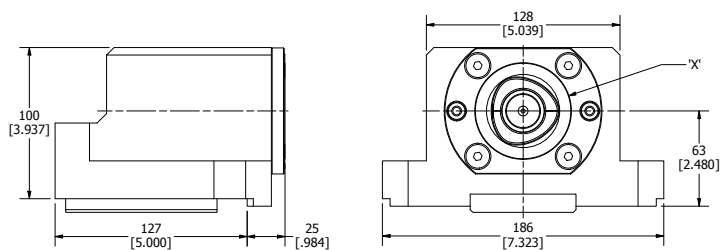
DMG MORI MSL603MC CAPTO ID HOLDER



| MOLDER NO. | 規格 SPEC. | TOOL CLAMPING | DIMENSION 'X' |
|------------|-----------------------|---------------|---------------|
| 5699-90763 | LC-DM-MSL603MC-C6-H70 | C6 | 63mm |

BMT/CAPTO外徑刀座

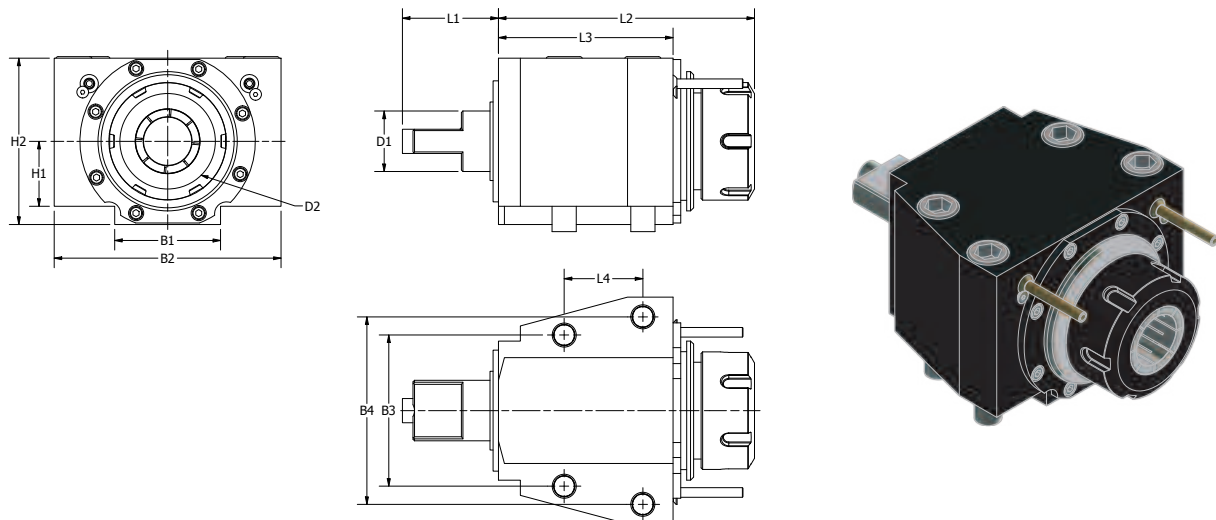
DMG MORI MSL603MC CAPTO OD HOLDER



| MOLDER NO. | 規格 SPEC. | TOOL CLAMPING | DIMENSION 'X' |
|------------|-------------------|---------------|---------------|
| 5699-90766 | LC-DM-MSL603MC-C6 | C6 | 63mm |

BMT軸向ER動力刀座

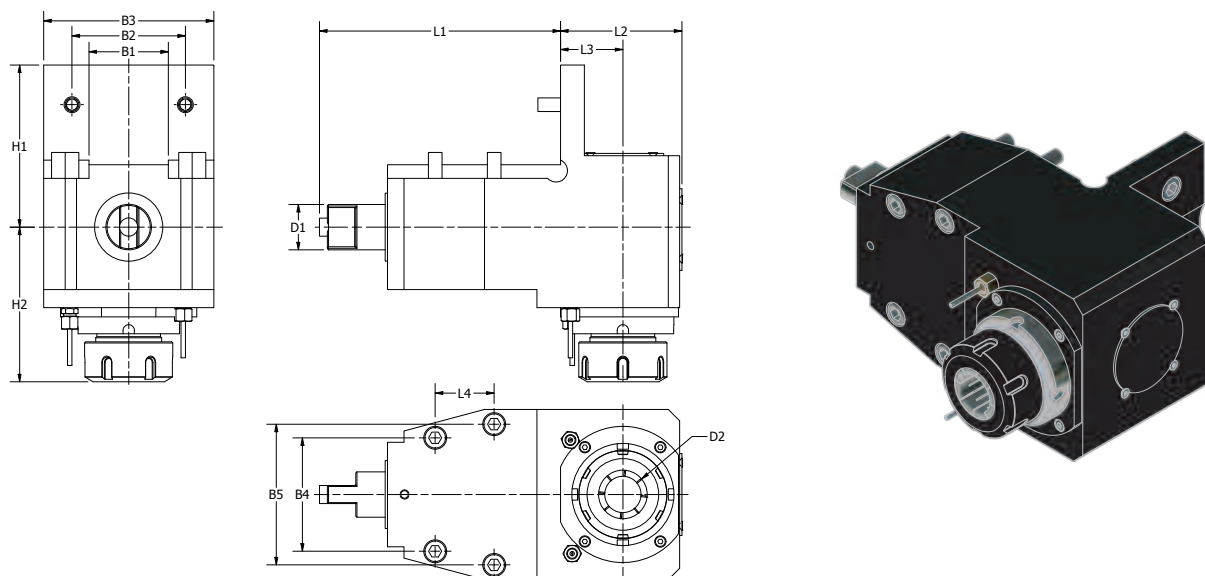
DMG MORI MSL603MC STRAIGHT DRILL-MILLING LIVE TOOL



| MOLDER NO. | 規格 SPEC. | 出水方式 COOLANT | D1 | D2 | B1 | B2 | B3 | B4 | H1 | H2 | L1 | L2 | L3 | L4 | MAX. REVOLUTION | GEAR RATIO | KG |
|------------|------------------------------|-----------------|----|------|----|-----|-----|-----|----|-----|----|-----|-----|----|--------------------|---------------|----|
| 5411-32190 | LC-BMT-01-4050OC-DM-MSL603MC | 外部Ext. | 40 | ER50 | 70 | 150 | 100 | 124 | 43 | 110 | 60 | 236 | 116 | 52 | 6000 | 1.1 | 14 |

BMT徑向ER動力刀座

DMG MORI MSL603MC RIGHT ANGLE DRILL-MILLING LIVE TOOL



| MOLDER NO. | 規格 SPEC. | 出水方式 COOLANT | D1 | D2 | B1 | B2 | B3 | B4 | B5 | H1 | H2 | L1 | L2 | L3 | L4 | MAX. REVOLUTION | GEAR RATIO | KG |
|------------|------------------------------|-----------------|----|------|----|-----|-----|-----|-----|-----|-----|-------|-----|----|----|--------------------|---------------|----|
| 5411-32193 | LC-BMT-11-4050OC-DM-MSL603MC | 外部Ext. | 40 | ER50 | 70 | 100 | 150 | 100 | 124 | 132 | 142 | 212.5 | 113 | 55 | 52 | 6000 | 1.1 | 37 |



正河源股份有限公司
CHAIN HEADWAY CO., LTD.

☎ 電話 TEL /
+886-4-26265252

☎ 傳真 FAX /
+886-4-26267941

📍 地址 Address /
436037台灣台中市清水區五權路232號
No. 232, Wuquan Rd., Qingshui Dist., Taichung City 436037, Taiwan

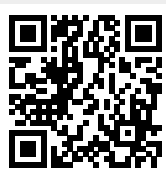
🌐 網址 Website /
www.chain-headway.com



公司官網(中文)



Website(EN)



LINE



WeChat



Facebook



YouTube