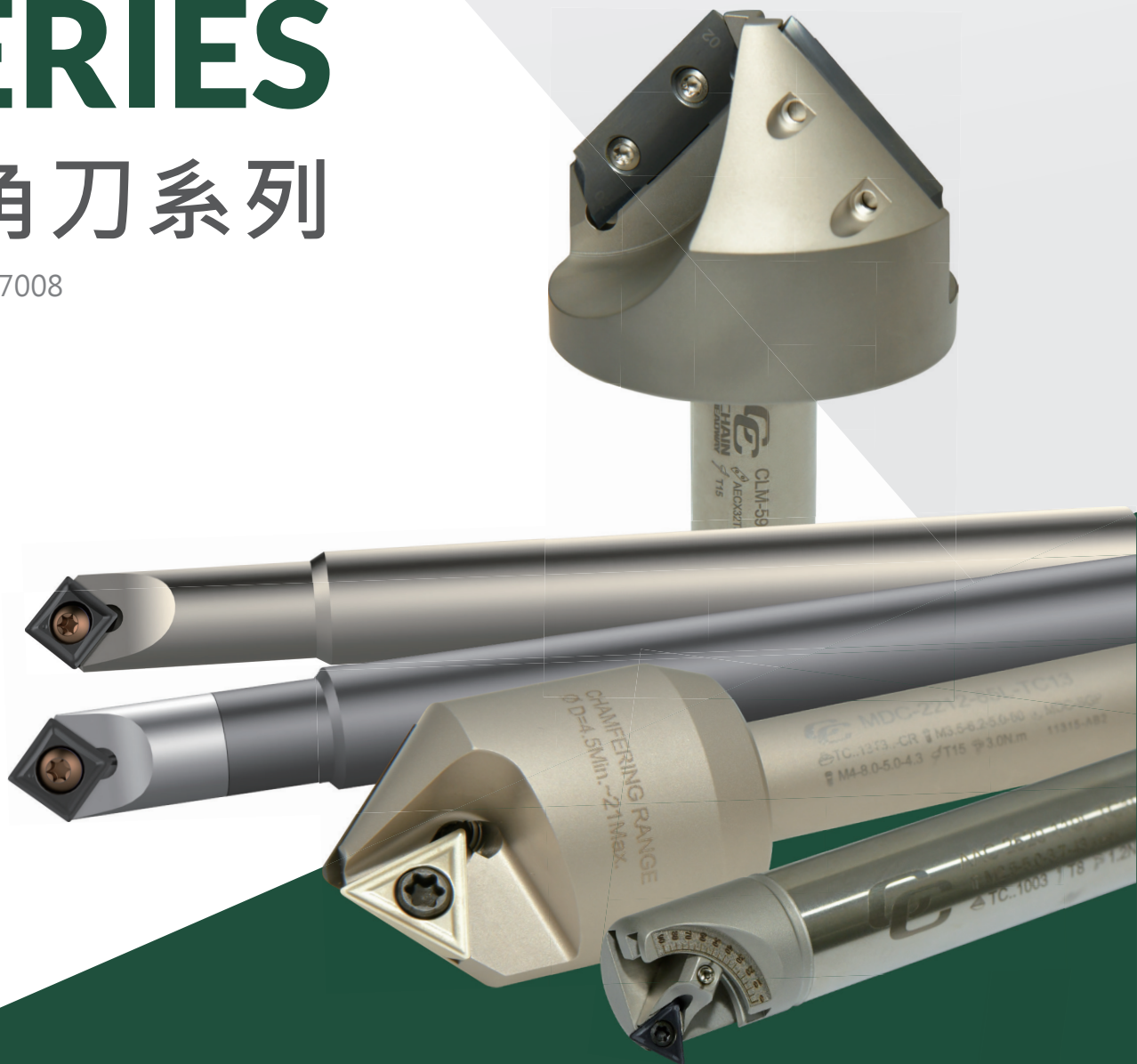




CHAMFERING CUTTER SERIES

倒角刀系列

No. 230807008



倒角刀系列 產品發展歷史

Chamfering Cutter Development History



SSK 45°捨棄式倒角刀
SSK 45° CHAMFER END MILLS



SPK-45°內外倒角刀
SPK-45° INTERNAL AND EXTERNAL
CHAMFER END MILL



SSE-45°內外倒角刀
SSE-45° CHAMFER END MILL

年度
Year

2005-2010

2010-2015

SSP 倒角刀系列 SSP CHAMFERING SERIES



SSP 30°倒角刀
SSP 30° INDEXABLE
CHAMFER MILLING



SSP 45°定位倒角刀
SSP 45° INDEXABLE
CHAMFER MILLING



SSP 60°倒角刀
SSP 60° INDEXABLE
CHAMFER MILLING



LC 刀片_倒C角R角
LC INSERT-CHAMFER AND RADIUS

銑削刀片 Milling Insert
LC1245-CH
LC1260-CH



M405 內外倒角刀
M405 INNER-OUTER CHAMFER MILLING CUTTER

2015-2020

2020-2023

ABLE
ING CUTTER

角刀
ABLE SPOT &
ING CUTTER

ABLE
ING CUTTER



MDC 多軸鑽床倒角刀
MDC MULTI-AXIS CHAMFERING CUTTER



MSP 小徑倒角刀
MSP MINI-CHAMFERING END MILL



CMSP 碳化鎢鋼小徑倒角刀
CMSP CARBIDE STEEL MINI-CHAMFERING END MILL



AAC 可調式倒角刀
AAC ADJUSTABLE ANGLE CHAMFERING CUTTER



TSP 45°倒角刀
TSP 45° INDEXABLE SPOT & CHAMFER MILLING CUTTER



CLM 長刃型倒角刀
CLM LONG EDGE CHAMFERING CUTTER

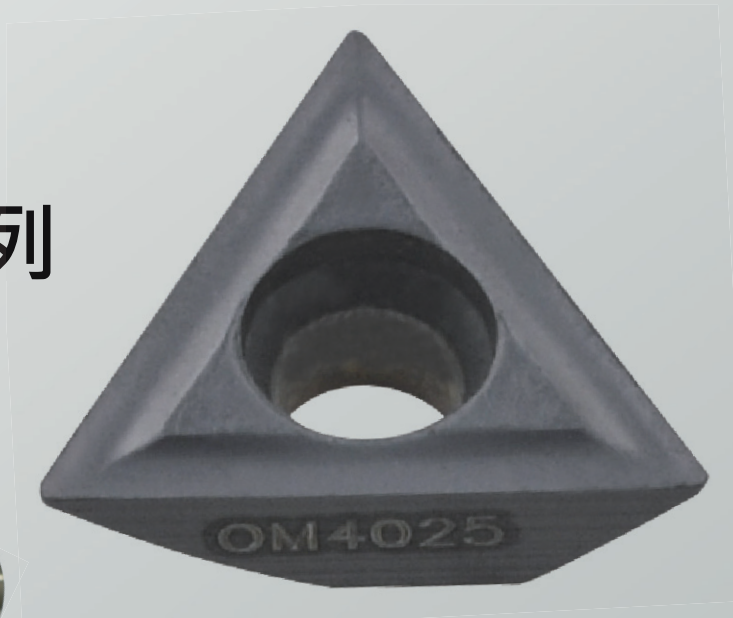


AAC 小徑可調式倒角刀
AAC ADJUSTABLE ANGLE MINI-CHAMFERING CUTTER

AAC

可調式倒角刀系列

ADJUSTABLE ANGLE
CHAMFERING CUTTER
SERIES





AAC 可調式倒角刀系列

AAC ADJUSTABLE ANGLE CHAMFERING CUTTER SERIES



可調式倒角刀片

Adjustable Angle Chamfering Cutter Insert

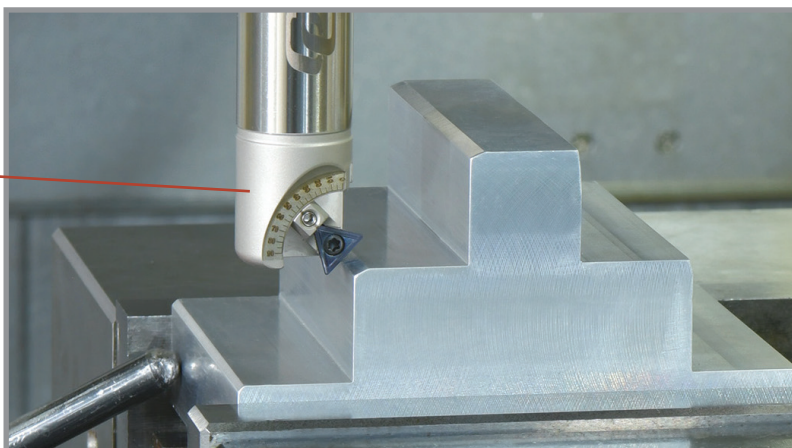


ISO 分類	P	合金鋼 Alloyed Steels	○	○																	切削狀態 Cutting Condition : ● 連續切削 Continuous Cutting ○ 一般切削 General Cutting ■ 斷續切削 Interrupted Cutting
	M	不鏽鋼 Stainless Steels	○	○	○																
	K	鑄鐵 Cast Iron	○	○																	
	N	鋁及鋁合金 Aluminum&Al							■	■											
S	高溫合金 Refractory Alloys			○																	
H	高硬度材 Hard Material	○																			
形狀 Shape	規格 Spec.	鍍層超微粒 Layer coated micro grain						超微粒硬質合金 Micro grain cemented carbide						尺寸 (mm) Size				圖形 Drawing			
		CHF						HF													
		OM4010	OM4025	RM535				OM5005	OM5060					d	i	s	r				
	TCEX100302E-FR	●	●					●	●					5.8	10	3.18	0.2				
	★ TCEX100304E-FR	●	●					●	●					5.8	10	3.18	0.4				
	TCEX100302E-AR	●	●											5.8	10	3.18	0.2				
	TCEX100304E-AR	●	●											5.8	10	3.18	0.4				
	NEW TCEX100304E-MR			●										5.8	10	3.18	0.4				

★ 推薦 Recommended NEW 新品 New Product

- MR 鈦合金專用
- TC..10/TC..13 · 02R 角刀片為「倒角功能」專用
- 規格末編碼帶 FR 刀片為銳角刀片

- MR: Applicable to Titanium
- TC..10/TC..13 → 02 radius can only use for chamfering.
- Suffix FR model designates a sharp cutting edge insert.



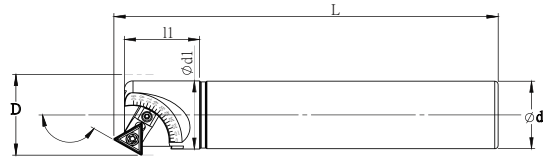
AAC 可調式倒角刀系列

AAC ADJUSTABLE ANGLE CHAMFERING CUTTER SERIES



AAC 小徑可調式倒角刀

AAC Adjustable Angle Mini-Chamfering Cutter



可自行調整 0° ~90°倒角應用
Adjustable chamfer angle from 0° to 90°

特點 Feature

- 較小刀具有效防止倒角角度干涉
- 倒角角度 0° ~90°的角度調整
- 可利用旋轉刀片座調整角度
- 手動旋轉刀片座與刀具上的刻度線與標點對齊，可在 0° ~90°的範圍內調整倒角角度
- Smaller size cutter prevent interference
- Flexible to adjust the chamfering angle from 0° ~90°
- Align the scale mark between insert seat and cutter body to set up 0° to 90° manually

規格 Spec.	L	l ₁	D	d	d ₁	θ	功能 Function	刀片 Insert	重量 (KGS) Weight
AAC-2520-110L-TC10	110	22	23.88	20	20.2	0° ~90°	倒角 Chamfering	TCEX1003	0.3

配件表 Accessories

刀片座 Insert Seat	圓柱壓固銷 Pin	刀片座鎖固螺絲 Insert Seat Fixed Screw	扳手 Wrench	扭力值 Torque	刀片 Insert	刀片螺絲 Insert Screw	扳手 Wrench	扭力值 Torque
AAC-25-TC10	AAC-5-8.2L	AAC-M3-3L	PL1.5	5.0	TC..1003	M2.5-5.0-3.7-43	T8	1.2

AAC 可調式倒角刀系列

AAC ADJUSTABLE ANGLE CHAMFERING CUTTER SERIES

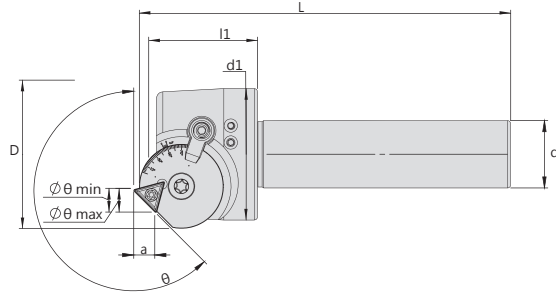


AAC 可調式倒角刀

AAC Adjustable Angle Chamfering Cutter

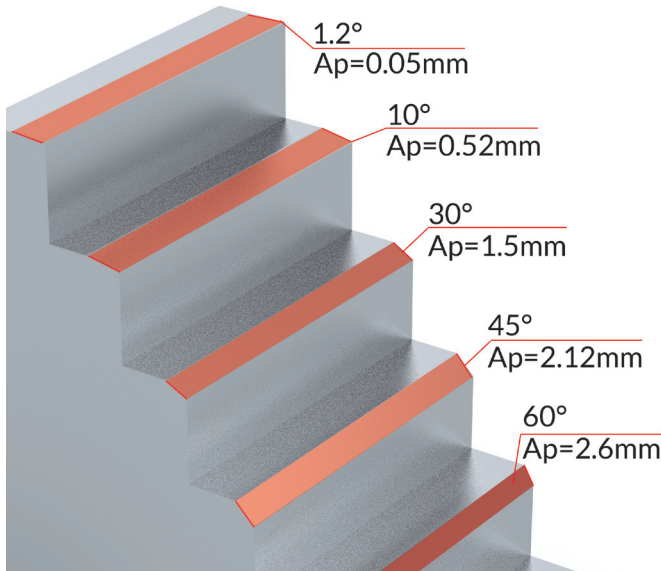


可自行調整 $0.1^{\circ} \sim 89.9^{\circ}$
倒角應用
Adjustable chamfer angle
from 0.1° to 89.9°



規格 Spec.	L	l1	D	d	d1	a	θ	刀片座 Insert Seat	刀片 Insert	重量 (KGS) Weight
AAC-4020-110L-TC10	105	30	41	20	39	0.005~9.29	$0.1^{\circ} \sim 89.9^{\circ}$	AAC-TC10	TC..1003	0.36

範例 Example



- 刀桿 Tool holder : BT40-LHC20-58
- 刀具 Cutter Tool : AAC-4020-110L-TC10
- 刀片 Insert : TCEX100304E-AR OM4025(1pcs)
- 工件材質 Material : S50C
- (V) : 100m/min
- (S) : 1600rpm
- (f) : 150mm/rev
- (F) : 0.06mm/min
- (A_p) : 3mm
- (A_e) : 2.12mm

AAC 可調式倒角刀系列

AAC ADJUSTABLE ANGLE CHAMFERING CUTTER SERIES



AAC 可調式倒角刀 (套裝一支組)

AAC Adjustable Angle Chamfering Cutter Set (1PC/Set)



範例 Example

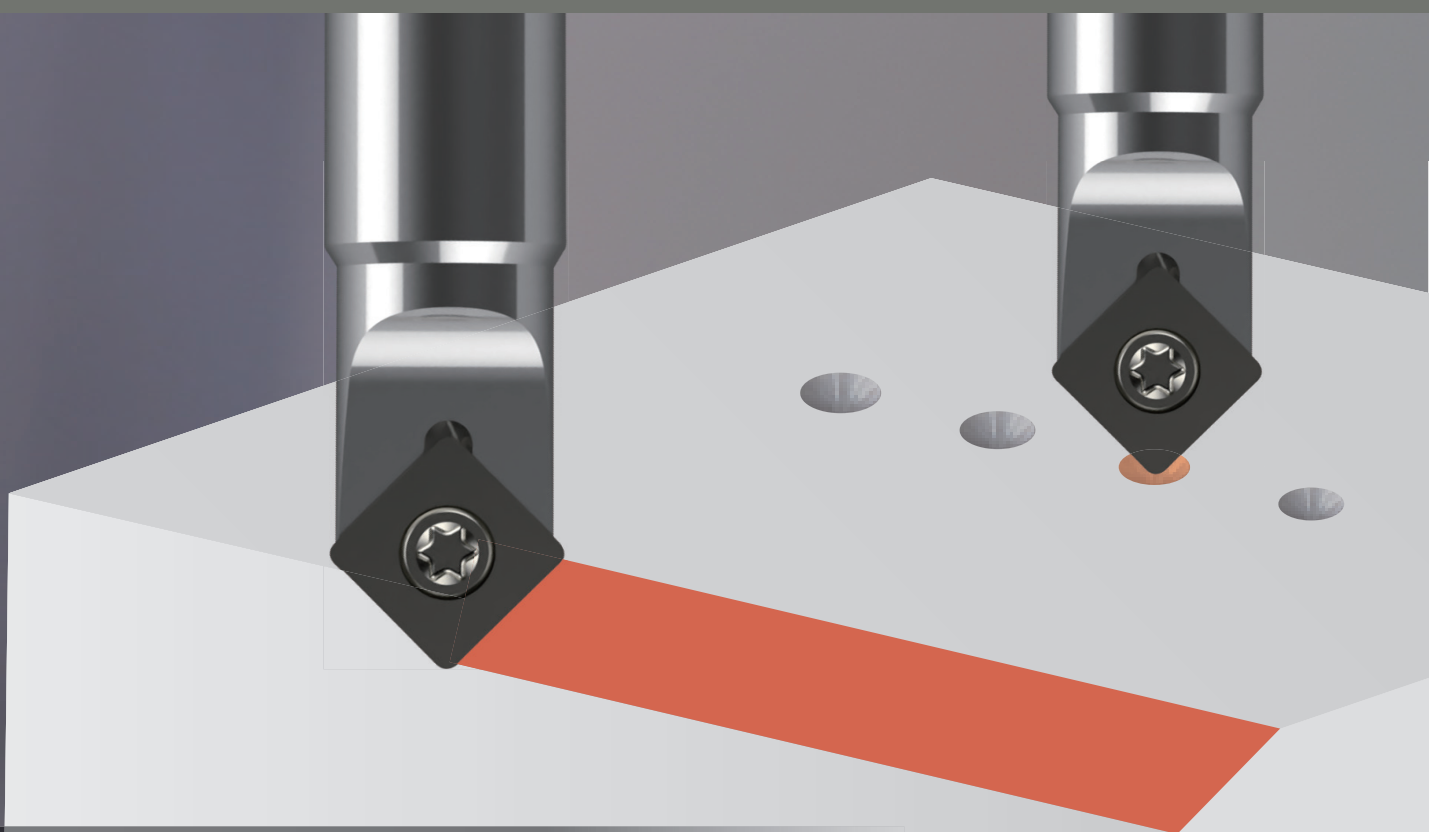


規格 Spec.	內容物 Contents				重量 (KGS) Weight
	刀具 Tools	刀片 Insert	扳手 Wrench	數位角度規 Digital Protractor	
AAC-4020-110L-TC10-SET	AAC-4020-110L	TCEX100304E-AR OM4025(1pcs)	T8 T10 T20 PL2.5 (1pcs)	LM-DP60 (1pcs)	-

TSP

45° 倒角刀

TSP 45° INDEXABLE SPOT
& CHAMFER MILLING
CUTTER



- 切深0.5-9mm
- Cutting Depth 0.5 - 9mm

- 內孔倒角範圍Ø1.5-Ø18.5mm
- Chamfer Range Ø1.5 - Ø18.5mm



TSP 45°倒角刀

TSP 45° INDEXABLE SPOT & CHAMFER MILLING CUTTER

NEW



TSP 45°倒角刀片

TSP 45° Indexable Spot & Chamfer Milling Cutter Insert



ISO 分類	P	合金鋼 Alloyed Steels	○	○											切削狀態 Cutting Condition : ● 連續切削 Continuous Cutting ○ 一般切削 General Cutting ■ 斷續切削 Interrupted Cutting		
	M	不鏽鋼 Stainless Steels		○													
	K	鑄鐵 Cast Iron	○														
	N	鋁及鋁合金 Aluminum&Al															
	S	高溫合金 Refractory Alloys															
	H	高硬度材 Hard Material															
形狀 Shape	規格 Spec.	鍍層超微粒 Layer coated micro grain	超微粒硬質合金 Micro grain cemented carbide								尺寸 (mm)				圖形 Drawing		
			CHF				HF				Size						
			OM4025	OM5035								d	i	s		r	
	NEW	SPGT090408AZER-M01	●	●									9.8	-	4.3	0.8	
	NEW	SPGT140512AZER-M01	●	●									14.3	-	5.2	1.2	

NEW 新品 New Product

SP_09、14 切削條件數據表 Cutting Parameter

加工型態 Processing Type	被加工材質 Machining Materials	刀片材質 Materials	切削速度 Vc(m/min)	每刃進給 fz(mm/rev)	切深 Ap(mm)
	P 合金鋼 Alloy Steels	OM4025	100~200	0.03~0.06	0.5~9
	M 不鏽鋼 Stainless Steels	OM5035	60~130	0.03~0.06	0.5~5
	K 鑄鐵 Cast Iron	OM4025	150~250	0.05~0.10	0.5~9

加工型態 Processing Type	被加工材質 Machining Materials	刀片材質 Materials	切削速度 Vc(m/min)	每刃進給 fz(mm/rev)	切深 Ap(mm)
	P 合金鋼 Alloy Steels	OM4025	100~250	0.10~0.2	0.5~9
	M 不鏽鋼 Stainless Steels	OM5035	60~130	0.10~0.2	0.5~9
	K 鑄鐵 Cast Iron	OM4025	120~250	0.15~0.25	0.5~9

TSP 45°倒角刀 TSP 45° INDEXABLE SPOT & CHAMFER MILLING CUTTER



TSP 45°倒角刀 TSP 45° Indexable Spot & Chamfer Milling Cutter



Fig.1

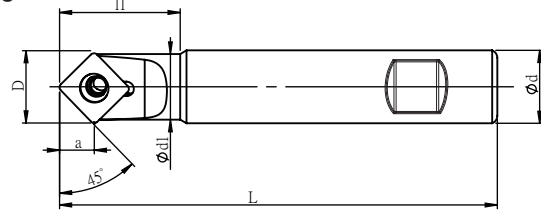
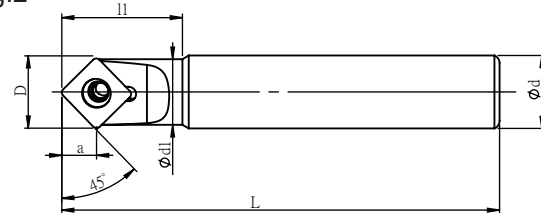


Fig.2



規格 Spec.	L	l ₁	D	d	d ₁	a	最大中心鑽深 / 孔直徑 Max. center drilling depth / diameter	刀片 Insert	Fig.	重量 (KGS) Weight
TSP-1316-SP09-110L	110	30	13.6	16	13	6.5	5mm/φ12	SPGT0904	1	0.17
TSP-1820-SP14-130L	130	40	20	20	18	9.5	9mm/φ19	SPGT1405	2	0.30

配件表 Accessories

刀片 Insert	螺絲 Screw	扳手 Wrench	扭力值 (N.m) Torque
SPGT0904	M4-8.0-5.0-43	T15	3.0
SPGT1405	M5-11-6.4-43	T20	5.0

功能
Function

倒角 chamfering
中心鑽 center drilling

內孔倒角範圍
Inner Chamfering Range

1.5	SP..0904	12.5
2.5	SP..1405	18.5

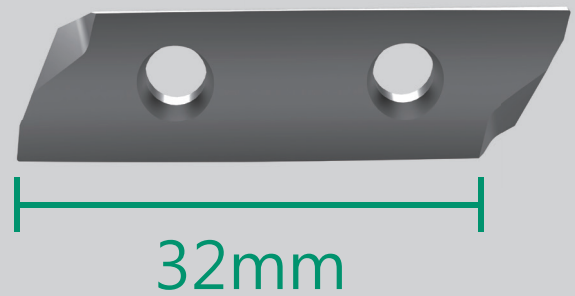
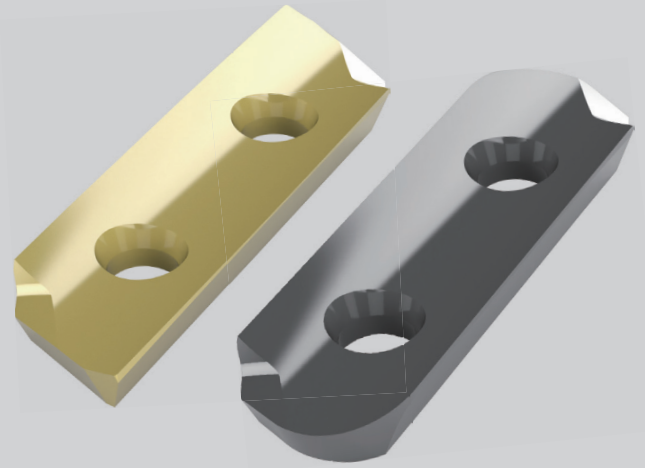
外倒角距離
Outer Chamfering Range

SP..0904 Max. 5mm
SP..1405 Max. 9mm

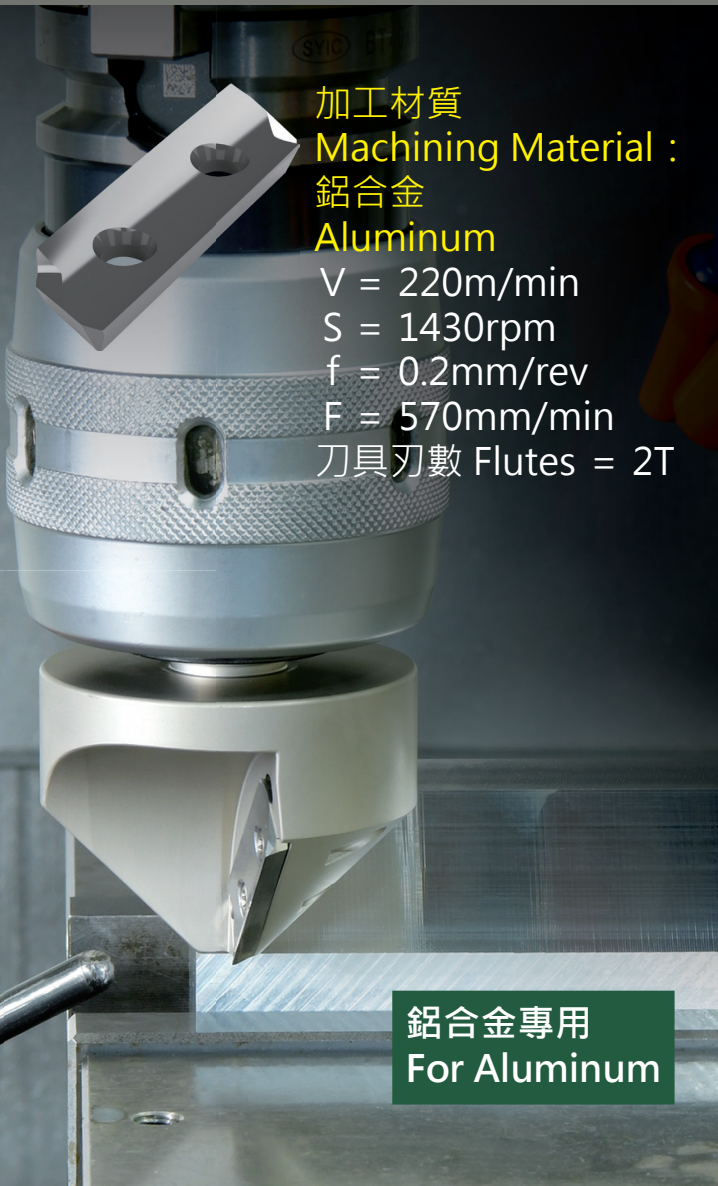
CLM

長刃型倒角刀

LONG EDGE
CHAMFERING CUTTER

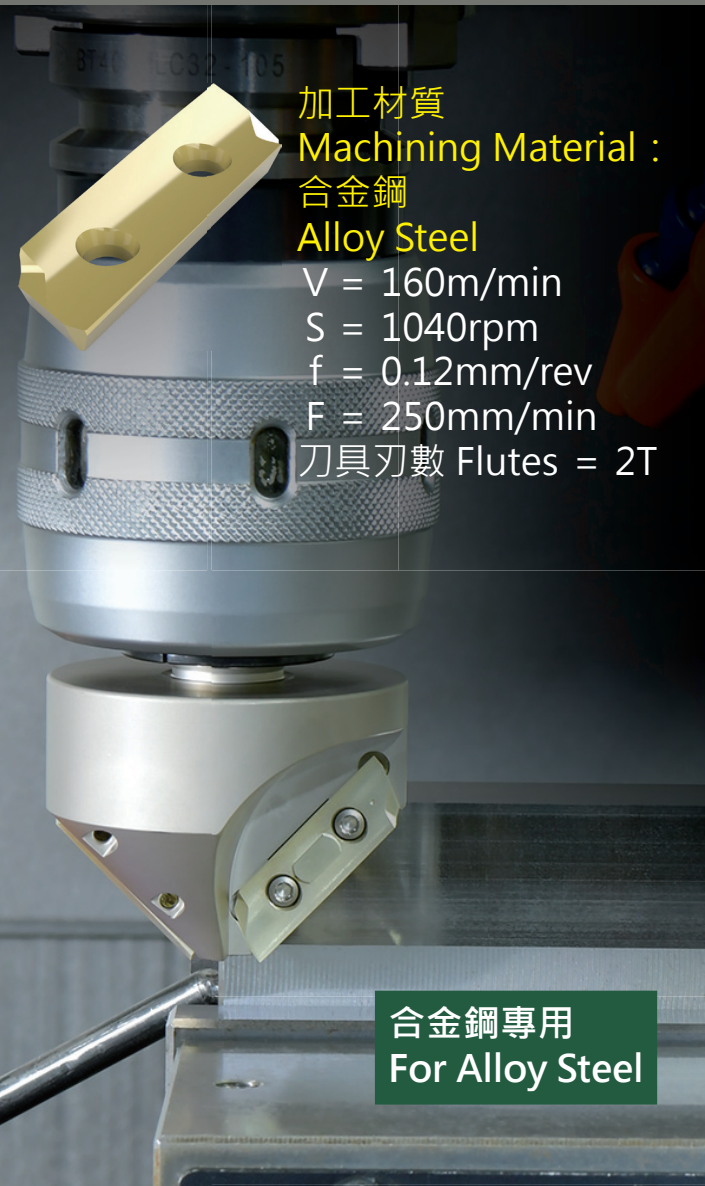


32mm



加工材質
Machining Material :
鋁合金
Aluminum
V = 220m/min
S = 1430rpm
f = 0.2mm/rev
F = 570mm/min
刀具刃數 Flutes = 2T

鋁合金專用
For Aluminum



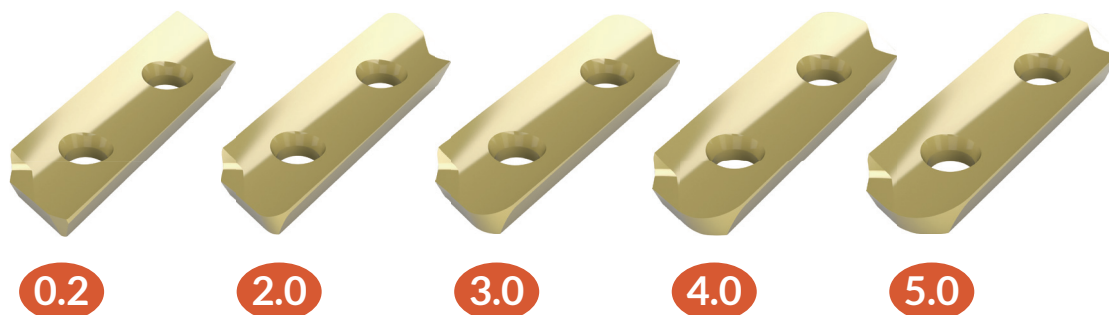
加工材質
Machining Material :
合金鋼
Alloy Steel
V = 160m/min
S = 1040rpm
f = 0.12mm/rev
F = 250mm/min
刀具刃數 Flutes = 2T

合金鋼專用
For Alloy Steel

CLM 長刃型倒角刀

CLM LONG EDGE
CHAMFERING CUTTER

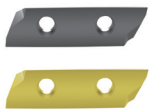
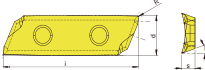
NEW



5 種刀尖圓弧半徑 Five Kinds of Cutting-Edge Radius

CLM 長刃型倒角刀片 CLM Long Edge Chamfering Cutter Insert



形狀 Shape	規格 Spec.	超微粒硬質合金 Micro grain carbide alloy			尺寸 (mm) Size				圖形 Drawing
		HF			d	i	s	r	
		OM5005	OM5060	OM5035					
	NEW AECX32T302ER-F01	●	●	●	11.9	37	3.97	0.2	
	NEW AECX32T320ER-F01	●	●	●	11.9	37	3.97	2	
	NEW AECX32T330ER-F01	●	●	●	11.9	37	3.97	3	
	NEW AECX32T340ER-F01	●	●	●	11.9	37	3.97	4	
	NEW AECX32T350ER-F01	●	●	●	11.9	37	3.97	5	

切削狀態 Cutting Condition :

- 連續切削 Continuous Cutting
- 一般切削 General Cutting
- 斷續切削 Interrupted Cutting

AECX32_ 切削條件數據表 Cutting Parameter

被加工材質 Machining Materials		刀片材質 Materials	切削速度 Vc(m/min)	每刃進給 fz(mm/rev)
P	合金鋼 Alloy Steels	OM5035	120~160	0.06~0.12
N	鋁合金 Aluminum&Al	OM5005	500~1800	0.05~0.25
		OM5060	500~1800	0.05~0.25

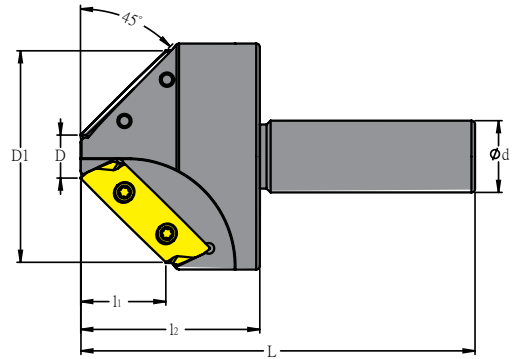
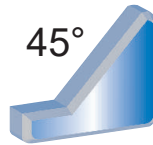
CLM 長刃型倒角刀

CLM LONG EDGE CHAMFERING CUTTER



CLM 長刃型倒角刀片

CLM Long Edge Chamfering Cutter



特點 Feature

- 採用 AECX32T3 刀片 · 可加大範圍倒角 · 倒角範圍 Ø13~58mm。

- Using AECX32T3 long edge insert to extend the chamfering range (from Ø13~58mm).

規格 Spec.	L	D	D1	d	l1	l2	功能 Features	刀片 Insert	重量 (KGS) Weight
CLM-5920-110L-AE32	110	12	59	20	23.7	50	倒角 Chamfering	AECX32T3	0.7
CLM-5932-110L-AE32	110	12	59	32	23.7	50	倒角 Chamfering	AECX32T3	0.9

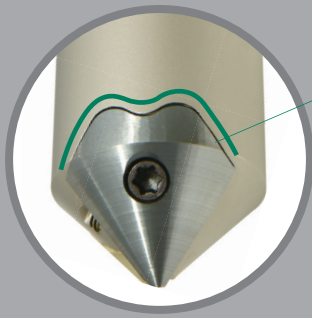
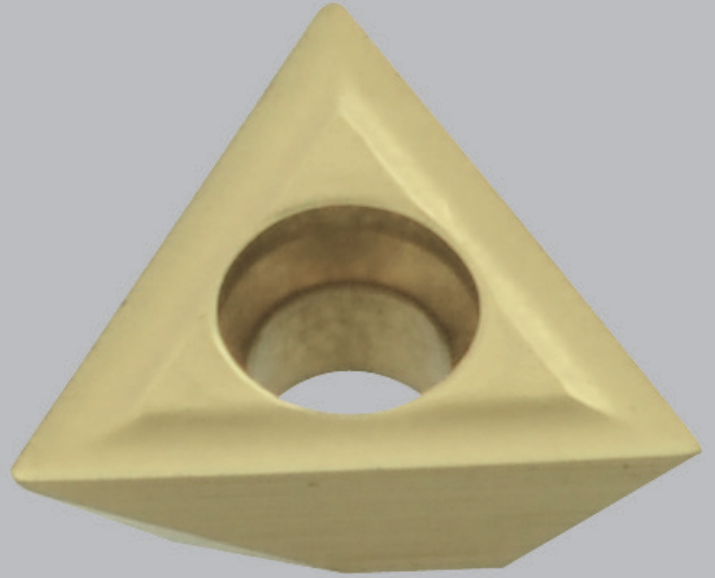
配件表 Accessories

刀片 Insert	螺絲 Screw	扳手 Wrench
AECX32T3	M4-8.0-5.2-43-T15	T15

MDC

多軸鑽床倒角刀

MULTI-AXIS
CHAMFERING CUTTER



支撐導塊

通過增加接觸面，來降低衝擊力。

Support Guide Pad

Increase contact surface to reduce the impact force while chamfering





MDC 多軸鑽床倒角刀

MDC MULTI-AXIS
CHAMFERING CUTTER

NEW



MDC 多軸鑽床倒角刀片

MDC Multi-Axis Chamfering Cutter Insert



ISO 分類	P	合金鋼 Alloyed Steels																			切削狀態 Cutting Condition :				
	M	不鏽鋼 Stainless Steels	○																			● 連續切削 Continuous Cutting ○ 一般切削 General Cutting ■ 斷續切削 Interrupted Cutting			
	K	鑄鐵 Cast Iron																							
形狀 Shape	規格 Spec.	鍍層超微粒 Layer coated micro grain								超微粒硬質合金 Micro grain cemented carbide								尺寸 (mm) Size				圖形 Drawing			
		CHF								HF															
		RM535																d	i	s	r				
	NEW	TCEX13T302E-CR	●																		7.94	13.4	3.97	0.2	

★ 推薦 Recommended **NEW** 新品 New Product

- CR 鑽床倒角刀專用

- TC..10/TC..13 · 02R 角刀片為「倒角功能」專用

- CR: Applicable to Deburring And Chamfering Cutter

- TC..10/TC..13 → 02 radius can only use for chamfering.

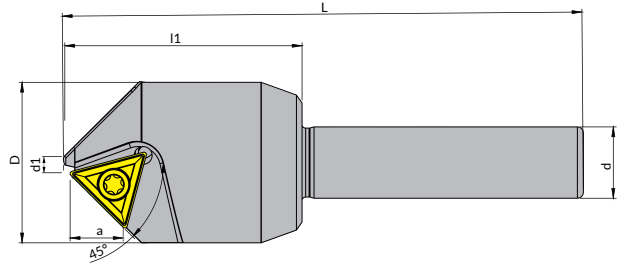
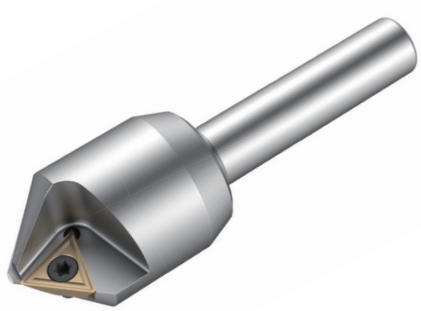
MDC 多軸鑽床倒角刀

MDC MULTI-AXIS CHAMFERING CUTTER



MDC 多軸鑽床倒角刀

MDC Multi-Axis Chamfering Cutter



特點 Feature

- 適用機台：鑽床、多軸鑽床、旋臂鑽床、氣動工具
- 萬用夾持柄徑 $\varnothing 12$
- 刀片可提供出色的倒角表面

- Suitable Machines: Drilling Machine, Multi-Spindle Drilling Machine, Radial Drilling Machine, and Pneumatic Tool
- Shank diameter $\varnothing 12$.
- Excellent chamfering surface.

規格 Spec.	L	l1	D	d	d1	a	內孔倒角範圍 Inner Chamfer Range	功能 Features	刀片 Insert	重量 (KGS) Weight
MDC-2212-85L-TC13	85	38	22	12	4	8	$\varnothing 4.5 - \varnothing 21$	倒角 Chamfering	TC..13T3..-CR	0.36

規格 Spec.	內容物 Contents			
	刀具 Tool	刀片 Insert	螺絲 Screw	扳手 Wrench
MDC-2212-85L-TC13-SET	MDC-2212-85L-TC13	TC..13T3..-CR RM535(2pcs)	M3.5-6.0-5.0-60 M4-8.0-5.0-43	T15

配件表 Accessories

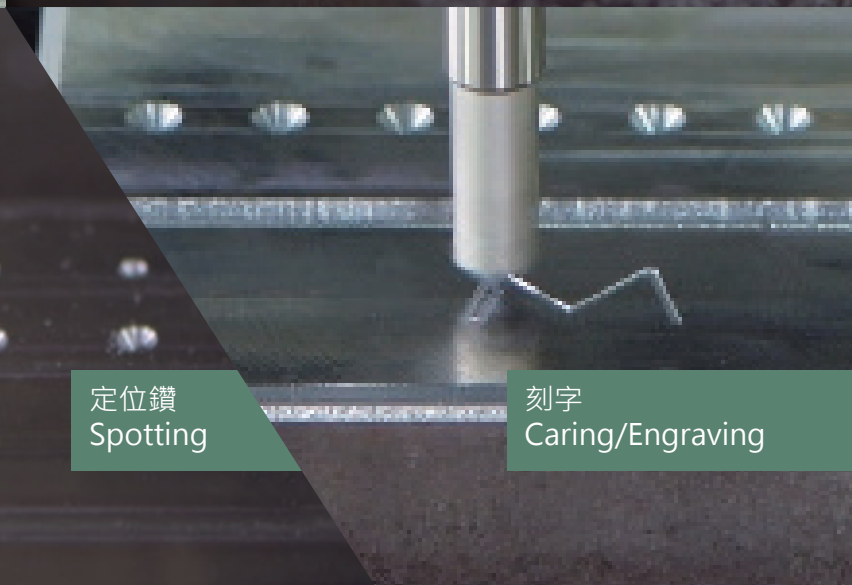
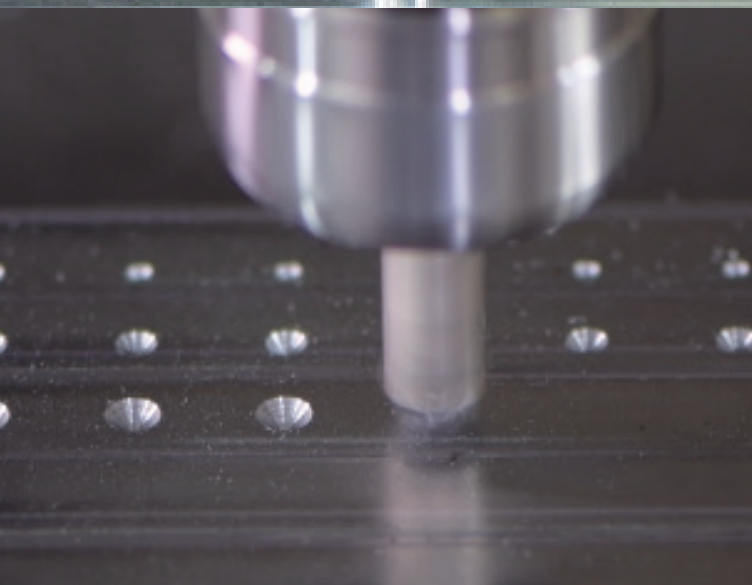
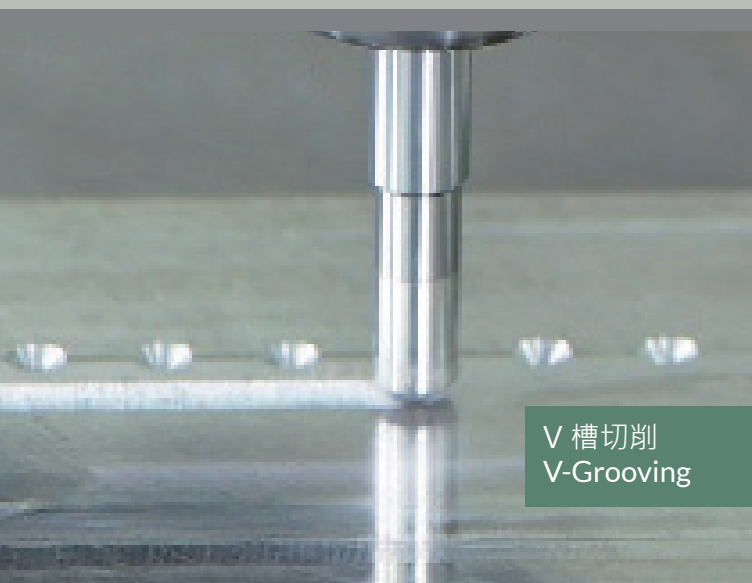
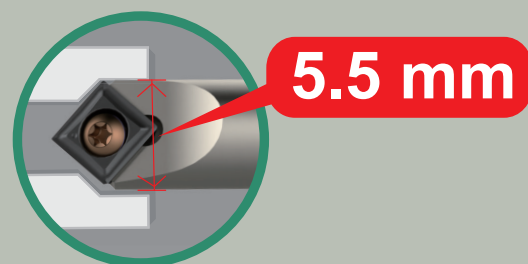
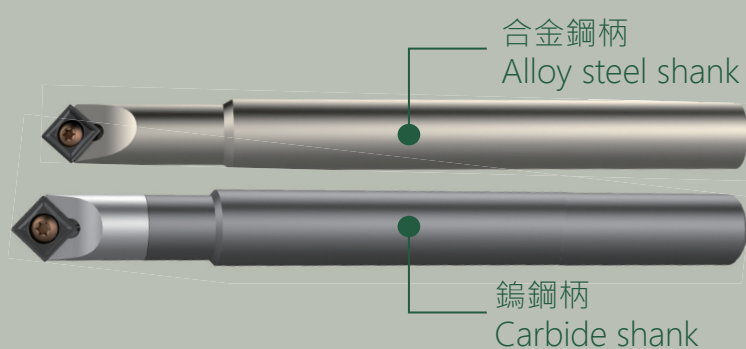
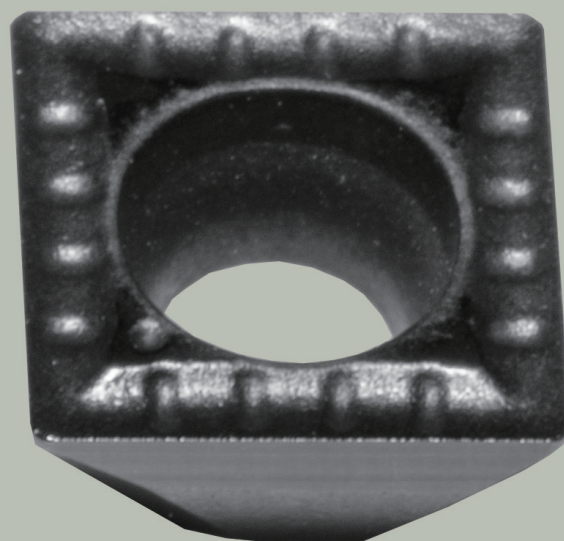
刀片 Insert	支撐導塊 Support Guide Pad	螺絲 Screw	螺絲 Screw	扳手 Wrench
TC..13T3..-CR	MDC-SGP	M3.5-6.0-5.0-60	M4-8.0-5.0-43	T15

下孔徑 Hole Diameter Size	轉速 n(rpm)			
	鋼 Steel	不鏽鋼 Stainless Steel	鑄鐵 Cast Iron	鋁合金 Aluminum Alloy
$\varnothing 4.5$	600	550	850	1150
$\varnothing 12$	450	350	550	750
$\varnothing 16$	350	250	450	550
$\varnothing 18$	250	250	450	450

MSP/ CMSP

小徑倒角刀

MINI-CHAMFERING
END MILL





MSP/CMSP 小徑倒角刀

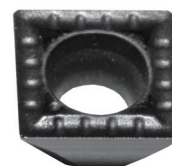
MSP/CMSP MINI-CHAMFERING
END MILL

NEW



MSP/CMSP 小徑倒角刀片

MSP/CMSP MINI-Chamfering End Mill Insert



ISO 分類	P	合金鋼 Alloyed Steels	○	○												切削狀態 Cutting Condition : ● 連續切削 Continuous Cutting ○ 一般切削 General Cutting ■ 斷續切削 Interrupted Cutting		
	M	不鏽鋼 Stainless Steels		○														
	K	鑄鐵 Cast Iron		○														
N	鋁及鋁合金 Aluminum&Al							■										
S	高溫合金 Refractory Alloys																	
H	高硬度材 Hard Material																	
形狀 Shape	規格 Spec.	鍍層超微粒 Layer coated micro grain				超微粒硬質合金 Micro grain cemented carbide				尺寸 (mm)				圖形 Drawing				
		CHF				HF				Size								
		OM4025	OM4125							OM5005						d	i	s
	NEW SBGT040204-F01	●	●							●				4.4	-	2	0.4	
	SBGT050202-F01	●	●							●				4.85	-	2	0.2	

NEW 新品 New Product

SB_04 05 切削條件數據表 Cutting Parameter

被加工材質 Machining Materials	刀片材質 Grade	切削速度 Vc(m/min)	進給率 (mm/rev)
P 低合金鋼 Low-Alloy Steels	OM4025	100~150	0.03~0.06
	合金鋼 Alloyed Steels	RM4125	100~150
M 不鏽鋼 Stainless Steels	OM4125	90~150	0.01~0.05
K 鑄鐵 Cast Iron	OM4025	70~130	0.05~0.10
	OM4125	70~130	0.05~0.10
N 鋁合金 Aluminum&Al	OM5005	400~750	0.05~0.12

主軸轉速 = (1000 × 切削速度) ÷ (3.14 × 刀具外徑)
 Spindle Speed = (1000 × Cutting speed) ÷ (3.14 × Cutter outer diameter).

床檯進給 (mm/min) = 每刃進給 × 刀具刃數 × 主軸轉速
 Feeding Speed (mm/min) = Feed per Flute × Flutes × Spindle speed.

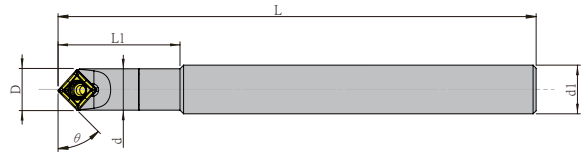
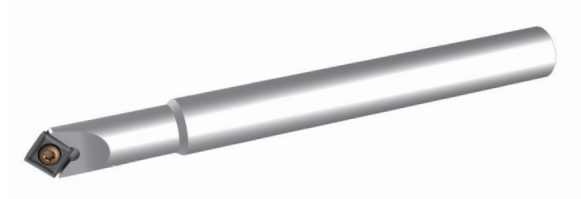
MSP/CMSP 小徑倒角刀

MSP/CMSP MINI-CHAMFERING END MILL



MSP 小徑倒角刀

MSP Mini-Chamfering End Mill



特點 Feature

- 尺寸小 · 減少干涉

- The slim design reduces interference while machining.

規格 Spec.	D	d1	d	L1	L	θ	刀數 T	刀片 Insert	螺絲 Screw	扳手 Wrench
NEW MSP-0606-40L-SB04	6.5	6	5.5	15	40	45	1	SBGT040204	M2-4.3-2.7-60-T6-TIN	T6
MSP-0708-80L-SB05	7.2	8	6.8	20	80	45	1	SBGT050202	M2-4.3-2.7-60-T6-TIN	T6
NEW MSP-0710-90L-SB05	7.2	10	6.8	20	90	45	1	SBGT050202	M2-4.3-2.7-60-T6-TIN	T6

配件表 Accessories

刀片 Insert	螺絲 Screw	扳手 Wrench
SB..04	M2-4.3-2.7-60-T6-TIN	T6
SB..05	M2-4.3-2.7-60-T6-TIN	T6

功能 Function

倒角 chamfering
中心鑽 center drilling
V 槽 v-grooving

倒角角度 Chamfering Degree

90°
45°

內孔倒角範圍 Inner Chamfering Range

1.2mm	SB..04	6mm
1mm	SB..05	6mm

外倒角距離 Outer Chamfering Range

-Z Max.

SB..04 Max. 2.3mm
SB..05 Max. 2.7mm

MSP/CMSP 小徑倒角刀

MSP/CMSP MINI-CHAMFERING END MILL

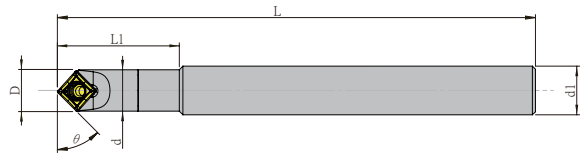


CMSP 碳化鎢鋼小徑倒角刀

CMSP Carbide Steel Mini-Chamfering End Mill



加長抗震
ANTI-VIBRATION



特點 Feature

- 尺寸小·減少干涉
- 使用碳化鎢鋼材質·增加剛性

- The slim design reduces interference while machining.
- Made of tungsten carbide material for higher rigidity.

規格 Spec.	D	d1	d	L1	L	θ	刃數 T	刀片 Insert	螺絲 Screw	扳手 Wrench
NEW CMSP-0606-60L-SB04	6.5	6	5.5	20	60	45	1	SBGT040204	M2-4.3-2.7-60-T6-TIN	T6
CMSP-0708-100L-SB05	7.2	8	6.8	20	100	45	1	SBGT050202	M2-4.3-2.7-60-T6-TIN	T6
NEW CMSP-0710-120L-SB05	7.2	10	6.8	20	120	45	1	SBGT050202	M2-4.3-2.7-60-T6-TIN	T6

配件表 Accessories

刀片 Insert	螺絲 Screw	扳手 Wrench
SB..04	M2-4.3-2.7-60-T6-TIN	T6
SB..05	M2-4.3-2.7-60-T6-TIN	T6

功能 Function

倒角 chamfering
中心鑽 center drilling
V 槽 v-grooving

倒角角度 Chamfering Degree

90° 45°

內孔倒角範圍 Inner Chamfering Range

Min 1.2mm 1mm
SB..04 6mm
SB..05 6mm
Max

外倒角距離 Outer Chamfering Range

-Z Max.
SB..04 Max. 2.3mm
SB..05 Max. 2.7mm



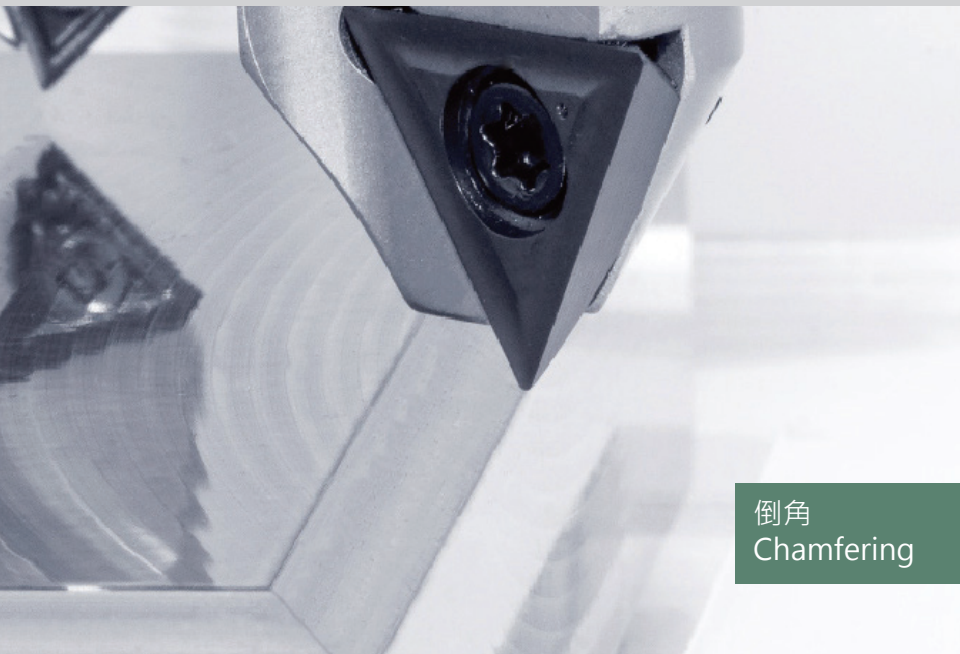
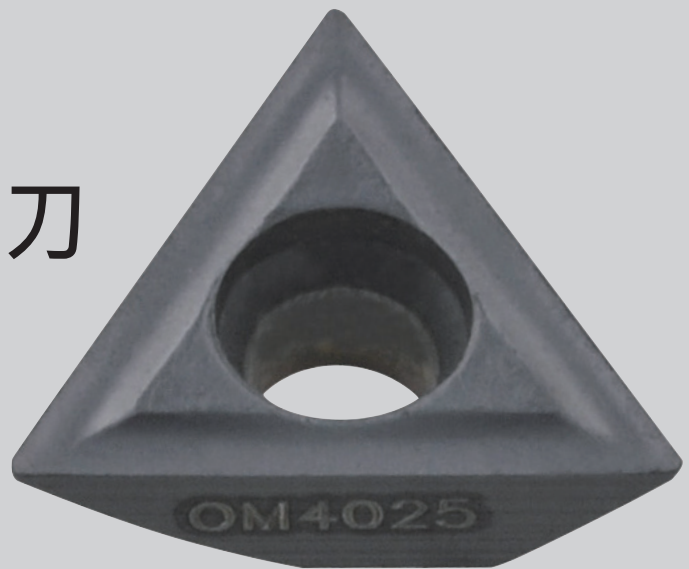
- 接單生產 120L-200L
- Make to order : 120L-200L.

SSP

30°、45°、60°倒角刀

30°、45°、60° CHAMFER
MILLING CUTTER

- 刀具及刀片特殊設計，於定位鑽及V槽切削時刀片可避免干涉。
- Clearance angle negates interference between the insert/cutting tool and the workpiece during v-grooving and spot-drilling.



倒角
Chamfering



V槽切削
V-grooving



定位鑽
Spotting


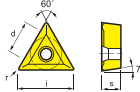

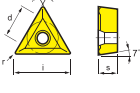

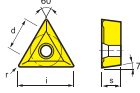


內孔倒角
Inner hole
chamfering



刻字
Carving



ISO 分類	P	合金鋼 Alloyed Steels	○	○														切削狀態 Cutting Condition : ● 連續切削 Continuous Cutting ○ 一般切削 General Cutting ■ 斷續切削 Interrupted Cutting
	M	不鏽鋼 Stainless Steels	○	○	○													
	K	鑄鐵 Cast Iron	○	○														
N	鋁及鋁合金 Aluminum&Al						■	■										
S	高溫合金 Refractory Alloys			○														
H	高硬度材 Hard Material	○																
形狀 Shape	規格 Spec.	鍍層超微粒 Layer coated micro grain						超微粒硬質合金 Micro grain cemented carbide						尺寸 (mm) Size				圖形 Drawing
		CHF						HF						Size				
		OM4010	OM4025	RM535				OM5005	OM5060					d	i	s	r	
	TCEX100302E-FR	●	●					●	●					5.8	10	3.18	0.2	
	★ TCEX100304E-FR	●	●					●	●					5.8	10	3.18	0.4	
	TCEX100302E-AR	●	●											5.8	10	3.18	0.2	
	TCEX100304E-AR	●	●											5.8	10	3.18	0.4	
	NEW TCEX100304E-MR			●										5.8	10	3.18	0.4	
	TCEX13T302E-FR	●	●					●	●					7.94	13.4	3.97	0.2	
	★ TCEX13T304E-FR	●	●					●	●					7.94	13.4	3.97	0.4	
	TCEX13T302E-AR	●	●											7.94	13.4	3.97	0.2	
	TCEX13T304E-AR	●	●											7.94	13.4	3.97	0.4	
	NEW TCEX13T304E-MR			●										7.94	13.4	3.97	0.4	
	TCEX16T304E-FR	●	●					●	●					9.52	16.5	3.97	0.4	
	★ TCEX16T308E-FR	●	●					●	●					9.52	16.5	3.97	0.8	
	TCMX16T304E-AR	●	●											9.52	16.5	3.97	0.4	
	TCMX16T308E-AR	●	●											9.52	16.5	3.97	0.8	
	NEW TCEX16T308E-MR			●										9.52	16.5	3.97	0.8	

★ 推薦 Recommended NEW 新品 New Product

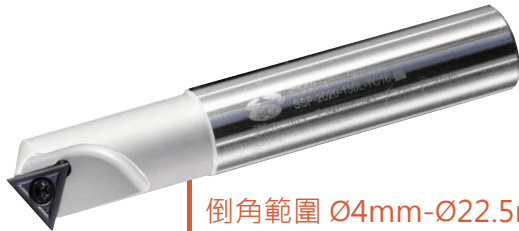
- MR 鈦合金專用
- TC..10/TC..13 · 02R 角刀片為「倒角功能」專用
- TC..16 · 04R 角刀片為「倒角功能」專用
- 規格末編碼帶 FR 刀片為銳角刀片

- MR: Applicable to Titanium
- TC..10/TC..13 → 02 radius can only use for chamfering.
- TC..16 → 04 radius can only use for chamfering.
- Suffix FR model designates a sharp cutting edge insert.

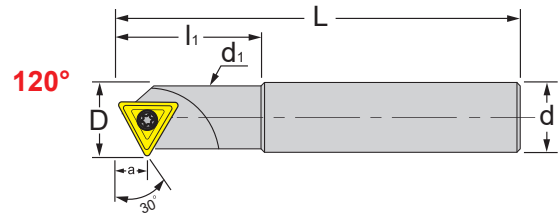


SSP 30°倒角刀

SSP 30° Indexable Chamfer Milling Cutter



倒角範圍 Ø4mm-Ø22.5mm
Chamfer Range Ø4 - Ø22.5mm



規格 Spec.	L	l ₁	D	d	d ₁	a	功能 Function	刀片 Insert	重量 (KGS) Weight
SSP-1212-105L-TC10-30	105	26	13.8	12	11.8	4.6	倒角 Chamfering	TC..1003	0.12
SSP-1616-110L-TC13-30	110	30	19.2	16	14	6.5	倒角 Chamfering	TC..13T3	0.18
SSP-2020-130L-TC16-30	130	50	22.5	20	19	7.6	倒角 Chamfering	TC..16T3	0.32

配件表 Accessories

刀片 Insert	螺絲 Screw	扳手 Wrench	扭力值 (N.m) Torque
TC..1003	M2.5-5.0-3.7-43	T8	1.2
TC..13T3	M3.5-8.0-5.0-60	T15	3.0
TC..16T3	M4-10-5.0-43	T15	3.0

功能 Function

倒角 chamfering

內孔倒角範圍 Inner Chamfering Range

數量	刀片	範圍
4	TC..1003	13.8
4	TC..13T3	19.2
8	TC..16T3	22.5

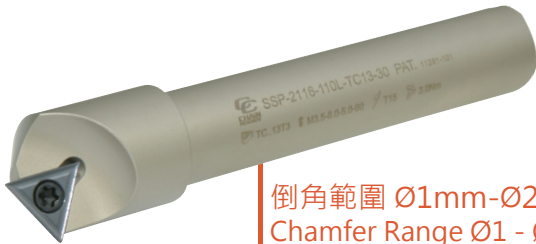
外倒角距離 Outer Chamfering Range

TC..1003	Max. 4.9mm
TC..13T3	Max. 6.4mm
TC..16T3	Max. 6.3mm

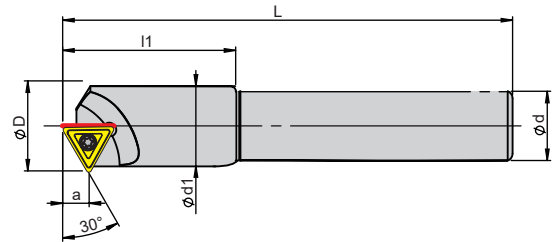


SSP 30°倒角刀

SSP 30° Indexable Chamfer Milling Cutter



倒角範圍 Ø1mm-Ø25mm
Chamfer Range Ø1 - Ø25mm



規格 Spec.	L	l ₁	D	d	d ₁	a	功能 Function	刀片 Insert	重量 (KGS) Weight
SSP-1512-105L-TC10-30	105	26	16	12	14.6	4.7	倒角 Chamfering	TC..1003	0.14
SSP-2116-110L-TC13-30	110	30	22.3	16	20	6.5	倒角 Chamfering	TC..13T3	0.2
SSP-2520-130L-TC16-30	130	50	26	23	23	7.6	倒角 Chamfering	TC..16T3	0.36

配件表 Accessories

刀片 Insert	螺絲 Screw	扳手 Wrench	扭力值 (N.m) Torque
TC..1003	M2.5-5.0-3.7-43	T8	1.2
TC..13T3	M3.5-8.0-5.0-60	T15	3.0
TC..16T3	M4-10-5.0-43	T15	3.0

功能 Function

倒角 chamfering

內孔倒角範圍 Inner Chamfering Range

1	TC..1003	15
1	TC..13T3	20
2	TC..16T3	25

外倒角距離 Outer Chamfering Range

TC..1003	Max. 4mm
TC..13T3	Max. 6mm
TC..16T3	Max. 6.5mm

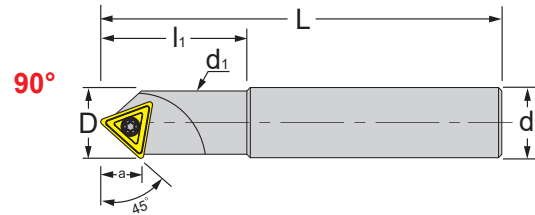


SSP 45° 定位倒角刀

SSP 45° Indexable Spot & Chamfer Milling Cutter



倒角範圍 Ø0mm-Ø22.5mm
Chamfer Range Ø0 - Ø22.5mm



規格 Spec.	L	l ₁	D	d	d ₁	a	功能 Function	刀片 Insert	重量 (KGS) Weight
SSP-1212-105L	105	26	13.4	12	11.8	6.05	倒角 / 定位 (04R 角) Chamfering/Spotting	TC..1003	0.12
SSP-1616-110L	110	30	19.2	16	14	9.7	倒角 / 定位 (04R 角) Chamfering/Spotting	TC..13T3	0.18
SSP-2012-100L	100	35	22.5	12	19	11.3	倒角 / 定位 (08R 角) Chamfering/Spotting	TC..16T3	0.16
SSP-2020-130L	130	50	22.5	20	19	11.3	倒角 / 定位 (08R 角) Chamfering/Spotting	TC..16T3	0.31

配件表 Accessories

刀片 Insert	螺絲 Screw	扳手 Wrench	扭力值 (N.m) Torque
TC..1003	M2.5-5.0-3.7-43	T8	1.2
TC..13T3	M3.5-8.0-5.0-60	T15	3.0
TC..16T3	M4-10-5.0-43	T15	3.0

功能 Function

倒角 chamfering
中心鑽 center drilling
V 槽 v-grooving

倒角角度 Chamfering Degree

90°
45°

內孔倒角範圍 Inner Chamfering Range

Min	Insert	Max
0	TC..1003	13.4
0	TC..13T3	19.2
0	TC..16T3	22.5

外倒角距離 Outer Chamfering Range

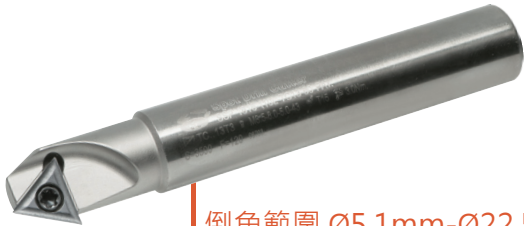
TC..1003	Max. 6.3mm
TC..13T3	Max. 9.7mm
TC..16T3	Max. 11.3mm

-Z Max.

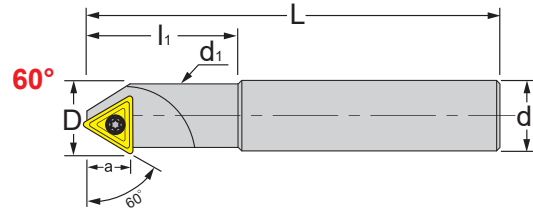


SSP 60° 倒角刀

SSP 60° Indexable Chamfer Milling Cutter



倒角範圍 Ø5.1mm-Ø22.5mm
Chamfer Range Ø5.1 - Ø22.5mm



規格 Spec.	L	l ₁	D	d	d ₁	a	功能 Function	刀片 Insert	重量 (KGS) Weight
SSP-1212-105L-TC10-60	105	26	13.8	12	11.8	8.5	倒角 Chamfering	TC..1003	0.12
SSP-1616-110L-TC13-60	110	30	19.2	16	14	11.16	倒角 Chamfering	TC..13T3	0.18
SSP-2020-130L-TC16-60	130	50	22.5	20	19	11.83	倒角 Chamfering	TC..16T3	0.32

配件表 Accessories

刀片 Insert	螺絲 Screw	扳手 Wrench	扭力值 (N.m) Torque
TC..1003	M2.5-5.0-3.7-43	T8	1.2
TC..13T3	M3.5-8.0-5.0-60	T15	3.0
TC..16T3	M4-10-5.0-43	T15	3.0

功能 Function

倒 角 chamfering

內孔倒角範圍 Inner Chamfering Range

Min	TC..	Max
5.1	TC..1003	13.8
7	TC..13T3	19.2
9	TC..16T3	22.5

外倒角距離 Outer Chamfering Range


TC..1003	Max. 8.5mm
TC..13T3	Max. 11.1mm
TC..16T3	Max. 11.8mm


**CHAIN
HEADWAY**
正河源股份有限公司

 電話 TEL /
+886-4-26265252

 傳真 FAX /
+886-4-26267941

 地址 Address /
台灣台中市清水區五權路232號
No. 232, Wuquan Rd., Qingshui Dist., Taichung City 436, Taiwan

 網址 Website /
www.chain-headway.com



公司官網(中文)



Website(EN)



LINE



WeChat



Facebook



YouTube