



UTER

立銑刀夾頭系列
UTER Collet chuck series



特點

Features



- | 刀桿前端O型環設計，防止鐵屑及切削液進入刀桿
- | 刀桿前端螺紋細牙設計，提升夾持力
- | 刀桿本體模具線較深，使標準ER筒夾置入更深，達到更佳包覆性，增加整體加工穩定性
- | 螺帽無風阻設計，降低高速加工時的風切現象，避免振刀情況發生，搭配軸承扳手

特點

Features



★ 切削數據

刀桿：BT40xUTER20-100

筒夾：ER20-8mm

立銑刀：8mm

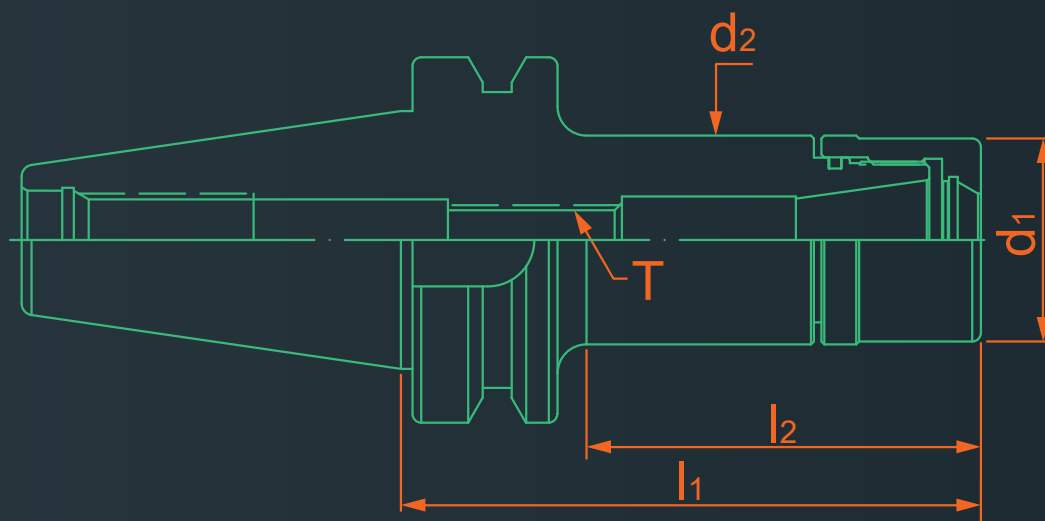
材料：SKD61

S= 3100rpm F= 600mm/min Ap= 15mm

	結構	筒夾規範	ER20-8mm 夾持力	表面粗糙度
UTER		ISO 國際標準規範筒夾(銑刀專用) 	90 N.m	 Ra=0.654um
ER		ISO 國際標準規範筒夾 	50 N.m	 Ra=1.039um

規格

Spec

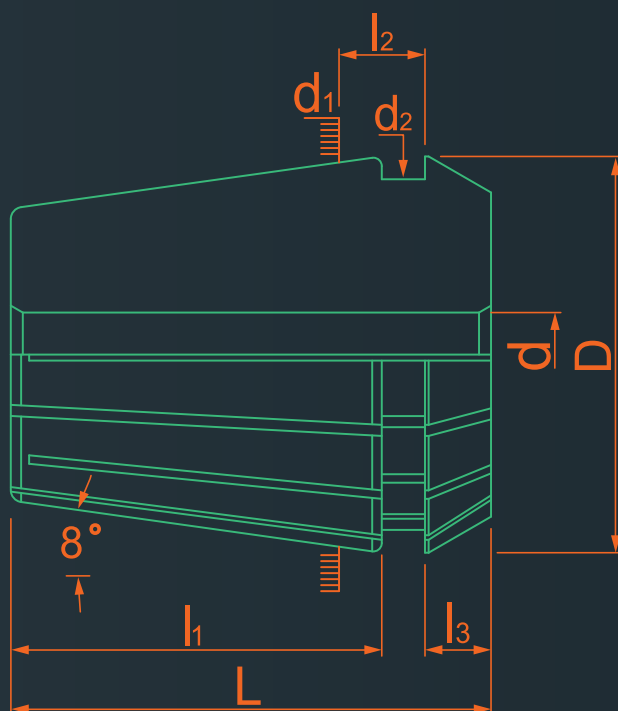


BT

規格 Spec.	l_1	l_2	d_1	d_2	T	夾持範圍 Size Range	重量 (KGS) Weight
BT30 x UTER16-70	70	43	30	30	M10x1.5P	Ø1~Ø10	0.70
BT30 x UTER16-100	100	73					0.78
BT30 x UTER20-70	70	47	35	36	M12x1.75P	Ø1~Ø13	0.68
BT30 x UTER20-100	100	77					0.85
BT30 x UTER25-70	70	46	42	42	M16x2.0P	Ø1~Ø16	0.70
BT30 x UTER25-100	100	76					1.00
BT40 x UTER16-70	70	40	30	30	M10x1.5P	Ø1~Ø10	1.22
BT40 x UTER16-100	100	63					1.36
BT40 x UTER20-70	70	38	35	36	M12x1.75P	Ø1~Ø13	1.20
BT40 x UTER20-100	100	68					1.46
BT40 x UTER25-70	70	40	42	42	M16x2.0P	Ø1~Ø16	1.22
BT40 x UTER25-100	100	70					1.50
BT40 x UTER32-70	70	40	48	48	M16x2.0P	Ø2~Ø20	1.30
BT40 x UTER32-100	100	70					1.60
BT50 x UTER20-70	70	31.6	35	36	M12x1.75P	Ø1~Ø13	3.68
BT50 x UTER20-100	100	52					4.42
BT50 x UTER25-70	70	29.8	42	42	M16x2.0P	Ø1~Ø16	3.70
BT50 x UTER25-100	100	52					4.01
BT50 x UTER32-80	80	41	48	48	M16x2.0P	Ø2~Ø20	3.80
BT50 x UTER32-100	100	57					5.00

規格

Spec



規格 Spec.	夾持範圍 Size Range	L	l ₁	l ₂	l ₃	D	d ₁	d ₂	重量 (KGS) Weight
ER16	1~10.0	27.5	20.8	6.26	4	17	16	13.8	0.03
ER20	1~13.0	31.5	23.9	6.36	4.8	21	20	17.4	0.04
ER25	2~16.0	34	25.9	6.66	5	26	25	22	0.06
ER32	2~20.0	40	30.9	7.16	5.5	33	32	29.2	0.10

ER16

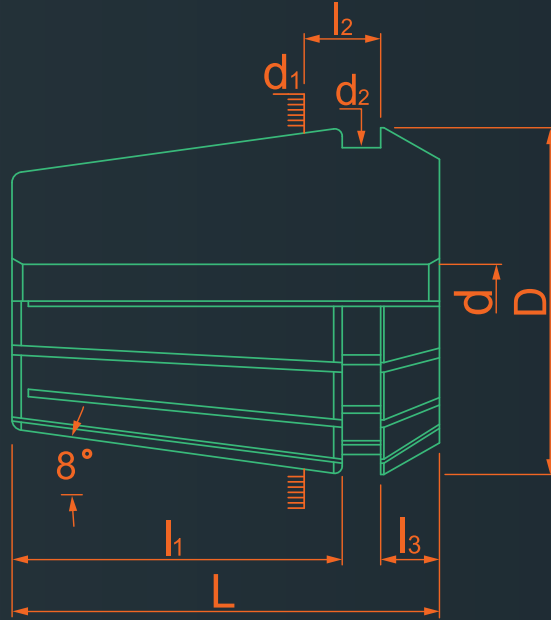
規格 Spec.	夾持範圍 Size Range	規格 Spec.	夾持範圍 Size Range
ER16-1	1~0.5	ER16-6	6~5
ER16-1.5	1.5~1	ER16-6.5	6.5~5.5
ER16-2	2~1.5	ER16-7	7~6
ER16-2.5	2.5~2	ER16-7.5	7.5~6.5
ER16-3	3~2	ER16-8	8~7
ER16-3.5	3.5~2.5	ER16-8.5	8.5~7.5
ER16-4	4~3	ER16-9	9~8
ER16-4.5	4.5~3.5	ER16-9.5	9.5~8.5
ER16-5	5~4	ER16-10	10~9
ER16-5.5	5.5~4.5		

ER20

規格 Spec.	夾持範圍 Size Range	規格 Spec.	夾持範圍 Size Range
ER20-1	1~0.5	ER20-7.5	7.5~6.5
ER20-1.5	1.5~1	ER20-8	8~7
ER20-2	2~1.5	ER20-8.5	8.5~7.5
ER20-2.5	2.5~2	ER20-9	9~8
ER20-3	3~2	ER20-9.5	9.5~8.5
ER20-3.5	3.5~2.5	ER20-10	10~9
ER20-4	4~3	ER20-10.5	10.5~9.5
ER20-4.5	4.5~3.5	ER20-11	11~10
ER20-5	5~4	ER20-11.5	11.5~10.5
ER20-5.5	5.5~4.5	ER20-12	12~11
ER20-6	6~5	ER20-12.5	12.5~11.5
ER20-6.5	6.5~5.5	ER20-13	13~12
ER20-7	7~6		

規格

Spec



ER25

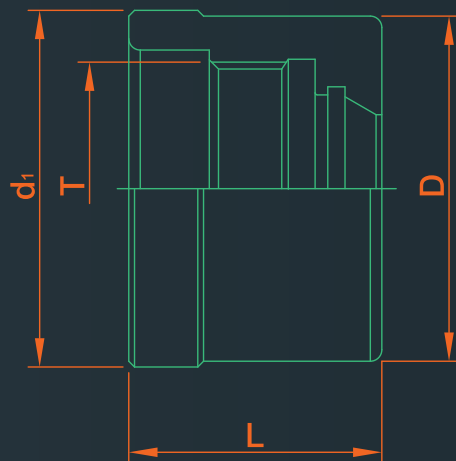
規格 Spec.	夾持範圍 Size Range	規格 Spec.	夾持範圍 Size Range
ER25-1	1~0.5	ER25-9	9~8
ER25-1.5	1.5~1	ER25-9.5	9.5~8.5
ER25-2	2~1.5	ER25-10	10~9
ER25-2.5	2.5~2	ER25-10.5	10.5~9.5
ER25-3	3~2	ER25-11	11~10
ER25-3.5	3.5~2.5	ER25-11.5	11.5~10.5
ER25-4	4~3	ER25-12	12~11
ER25-4.5	4.5~3.5	ER25-12.5	12.5~11.5
ER25-5	5~4	ER25-13	13~12
ER25-5.5	5.5~4.5	ER25-13.5	13.5~12.5
ER25-6	6~5	ER25-14	14~13
ER25-6.5	6.5~5.5	ER25-14.5	14.5~13.5
ER25-7	7~6	ER25-15	15~14
ER25-7.5	7.5~6.5	ER25-15.5	15.5~14.5
ER25-8	8~7	ER25-16	16~15
ER25-8.5	8.5~7.5		

ER32

規格 Spec.	夾持範圍 Size Range	規格 Spec.	夾持範圍 Size Range
ER32-2	2~1.5	ER32-11.5	11.5~10.5
ER32-2.5	2.5~2	ER32-12	12~11
ER32-3	3~2	ER32-12.5	12.5~11.5
ER32-3.5	3.5~2.5	ER32-13	13~12
ER32-4	4~3	ER32-13.5	13.5~12.5
ER32-4.5	4.5~3.5	ER32-14	14~13
ER32-5	5~4	ER32-14.5	14.5~13.5
ER32-5.5	5.5~4.5	ER32-15	15~14
ER32-6	6~5	ER32-15.5	15.5~14.5
ER32-6.5	6.5~5.5	ER32-16	16~15
ER32-7	7~6	ER32-16.5	16.5~15.5
ER32-7.5	7.5~6.5	ER32-17	17~16
ER32-8	8~7	ER32-17.5	17.5~16.5
ER32-8.5	8.5~7.5	ER32-18	18~17
ER32-9	9~8	ER32-18.5	18.5~17.5
ER32-9.5	9.5~8.5	ER32-19	19~18
ER32-10	10~9	ER32-19.5	19.5~18.5
ER32-10.5	10.5~9.5	ER32-20	20~19
ER32-11	11~10		

規格

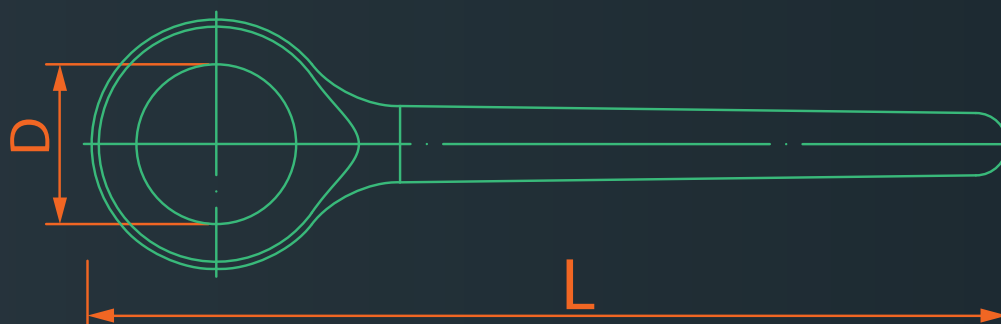
Spec



規格 Spec.	L	D	d ₁	T	重量 (KGS) Weight
UTER16	22	30	31	M22 x 1.0P	0.07
UTER20	27.5	35	36	M27 x 1.0P	0.10
UTER25	28.5	42	43	M32 x 1.0P	0.15
UTER32	31	48	49	M40 x 1.0P	0.17

規格

Spec



規格 Spec.	L	D	重量 (KGS) Weight
UTER16	170	30	-
UTER20	235	35.3	-
UTER25	225	42.13	-
UTER32	198	48	-

- UTER16 與 PNER16 軸承扳手共用
- UTER32 與 SKS20 軸承扳手共用

產品數位資訊

Product Digital Media



影片
Video



目錄
Catalogue