



台灣專利證號 TW PAT. NO:
M626060

大陸專利證號 CN PAT. NO:
ZL 2021 2 3268957.9

TOOL PRESETTER

刀具設定儀系列

No. 230803007



簡單操作、輕鬆入手 易於控管刀具精度

Easy operation to control
the cutter accuracy

- 具真空吸附功能，重複定位佳
- BT30 / BT40 / BT50 / HSK63 一機多用
(BT採雙面拘束，與BBT共用)
- 量測器材【刀具精度偏擺量測 / 刀長量測 / 精度偏擺量測】
- 大幅降低佔用主軸量測時間
- The pneumatic structure increases the vacuum adsorption function to improve the positioning and show repeatability of the tool bar.
- Available for BT30 / BT40 / BT50 / HSK63.
(BT implements a dual-drive system as BBT)
- Measuring equipment for tool and edge differences, tool height, and tool run-out.
- Save the measuring time on machine spindle.

【高度規】
刀長量測

【Height Gauge】
Tool height measurement



【高度規比測台立柱】
精度偏擺量測

【Comparator Stand Column】
Run-out measurement



【萬向磁性座】
精度偏擺量測

【Universal Arm Magnetic Base】
Run-out measurement





LM-CM-PHC3160 輕量型 μ 級校正儀

LM-CM-PHC3160 MICRON GRADE TOOL PRESETTER

- 安裝千分錶可針對刀具做偏擺的檢測。
- 配合高度規可進行刀具之刀長量測。
- Place a dial indicator to measure the tool run-out.
- Measure the tool length with a height gauge.



LM-CM-PHC3400X 精密型 μ 級校正儀

LM-CM-PHC3400X PRECISION GRADE TOOL PRESETTER

- 採用高精度線軌、雙滑塊結構，確保長久量測之精度。
- 採用精密數據尺，其具數值顯示器，易讀量測數值。
- Adopt high-precision linear rail and double-slider structure to ensure long-term measurement stability.
- Equipped with high precision D.R.O. Values shown on the monitor are more accurate and easy to read.

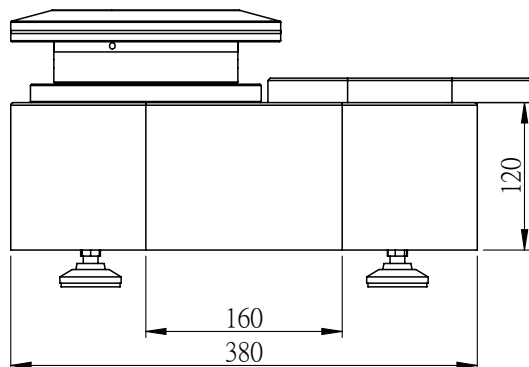




LM-CM-PHC3160

輕量型 μ 級校正儀

LM-CM-PHC3160 MICRON GRADE TOOL PRESETTER



特點 Feature

- 安裝千分錶可針對刀具做偏擺的檢測
- 配合高度規可進行刀具之刀長量測
- 便利針對密齒刀、搪刀等刀具做調整設定
- 氣動結構增加真空吸附功能，改善刀桿定位重複精度
- Place a dial indicator to measure the tool run-out.
- Measure the tool length with a height gauge.
- Conveniently adjust settings for close-tooth cutters, boring cutters, and other tools.
- The pneumatic structure provides the vacuum adsorption function to improve the positioning repeatability of the tool bar.



規格 Spec.	量測範圍 Range of Measuring	機台外型尺寸 Size of Machine	量測精度 Accuracy of Measuring	機台重量 Weight of Machine	氣壓條件 Atmospheric Conditions
LM-CM-PHC3160-BT30	直徑Diameter(X) : Ø160mm 高度Height(Z) : 300mm	長(L)x 寬(W)x 高(H) =424.5x 220 x 225.25 mm	0.005mm	37.5 Kg	0.4~0.6 Mpa
LM-CM-PHC3160-BT40					
LM-CM-PHC3160-BT50					
LM-CM-PHC3160-HSK63					
量測功能 Measurement Function					
1. 可調式工具及刀具 2. 刀具測量偏擺		1. Adjustable tools and cutter. 2. Runout measurement.			

LM-CM-PHC3160 輕量型 μ 級校正儀

LM-CM-PHC3160 MICRON GRADE TOOL PRESETTER

標配 Standard

圖示 Image	名稱 Name	規格 Spec.
	主軸清潔棒 Spindle Cleaner Bar	W30、W40、 W50

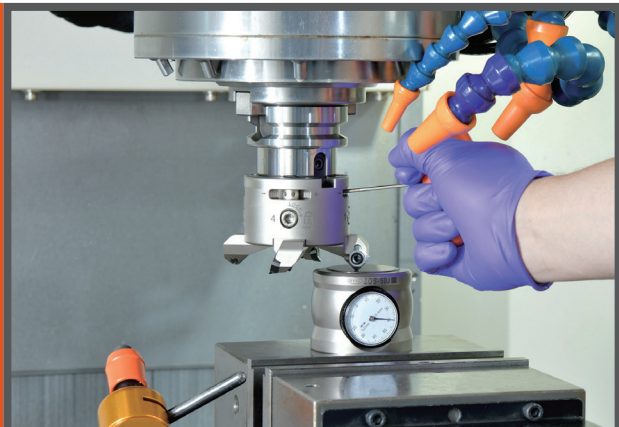
選配 Option

圖示 Image	名稱 Name	規格 Spec.	圖示 Image	名稱 Name	規格 Spec.
	測試棒 Testing Bar	BT30-TS250L BT40-TS300L BT50-TS300L		萬向磁性錶座 Universal Arm Magnetic Base	LM-M120
	千分量錶 Dial Gauge	-		高度規 Height Gauge	-
				高度規比測台立柱 Comparator Stand Column	LM-MP25-350-C

實際應用 Application



機台外測量，不占用主軸時間
Do measurement in advance.
Reduce cnc machine down time.



停機測量，占用主軸時間
Do measurement on cnc machine.
Take time and idle the machine.



銼刀軸向歸零調整 Axial pre-set reamer



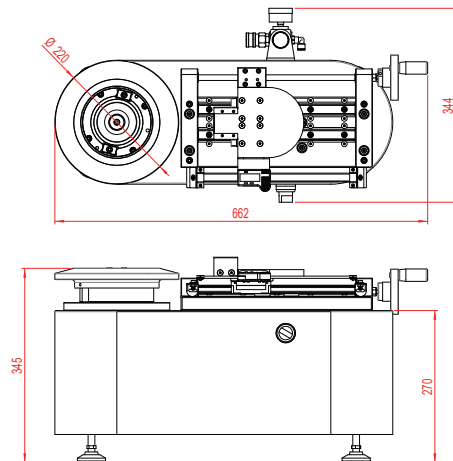
3D 調整校正 Adjustment of 3D master



LM-CM-PHC3400X

精密型 μ 級校正儀

LM-CM-PHC3400X PRECISION GRADE TOOL PRESETTER



特點 Feature

- 採用高精度線軌、雙滑塊結構，確保長久量測之精度
- 採用精密數據尺，其具數值顯示器，易讀量測數值
- 使用無牙螺桿傳動，其無背隙穩定精準位移
- 具真空吸附之固定機構，提高刀桿定位之重複精度
- Adopt high-precision linear rail and double-slider structure to ensure long-term measurement stability.
- Equipped with high precision D.R.O. Values shown on the monitor are more accurate and easy to read.
- High quality rod without backlash provides accurate measurements.
- The vacuum adsorption function improves the positioning repeatability of the tool bar.

規格 Spec.	量測範圍 Range of Measuring	機台外型尺寸 Size of Machine	量測精度 Accuracy of Measuring	機台重量 Weight of Machine	氣壓條件 Atmospheric Conditions
LM-CM-PHC3400X-BT30	直徑Diameter(X) : 0~ \varnothing 400mm 高度Height(Z) : 50~300mm	長(L)x 寬(W)x 高(H) 662x344x345mm	0.005mm	59.65 Kg	0.4~0.6 Mpa
LM-CM-PHC3400X-BT40					
LM-CM-PHC3400X-BT50					
LM-CM-PHC3400X-HSK63					

量測功能

Measurement Function

- | | |
|-------------|--|
| 1. 可調式工具及刀具 | 1. Adjustable tools and cutter. |
| 2. 刀具測量偏擺 | 2. Runout measurement. |
| 3. 可調式粗搪及精搪 | 3. Adjustable boring for roughing and finishing. |

LM-CM-PHC3400X 精密型 μ 級校正儀

LM-CM-PHC3400X PRECISION GRADE TOOL PRESETTER

標配 Standard

圖示 Image	名稱 Name	規格 Spec.
	主軸清潔棒 Spindle Cleaner Bar	W30、W40、 W50

選配 Option

圖示 Image	名稱 Name	規格 Spec.	圖示 Image	名稱 Name	規格 Spec.
	測試棒 Testing Bar	BT30-TS250L BT40-TS300L BT50-TS300L		萬向磁性座 Universal Arm Magnetic Base	LM-M120
	千分量錶 Dial Gauge	-		高度規 Height Gauge	-

實際應用 Application



- 搭配磁性槓桿錶架
 - 可量測刀具偏擺精度。
 - 配合 X 軸移動滑座，在換刀時方便量測，可減少槓桿錶設定時間。

- With magnetic lever stand
 - Measure the run-out of the cutting tool.
 - Easily change the cutter with X axial slider to save the setting time.



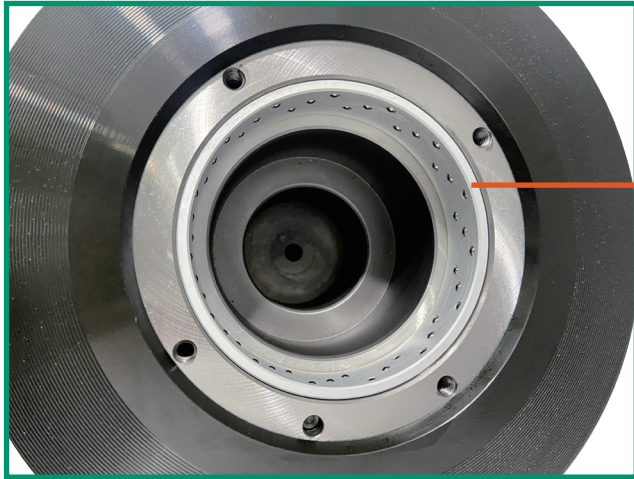
- 搭配高度規
 - 可量測刀具刀長。
 - 可調整密齒刀盤、搪等刀具之刃差精度。
 - 在線下完成刀具量測，減少占用機台設定時間。

- With height gauge
 - Measure the length of the tool.
 - Conveniently adjust accuracy of the height variation for close-tooth cutters, boring cutters, and other tools.
 - Suitable for placing beside the machin for offline measurement, significantly reducing the spindle measurement time.

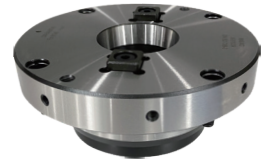
LM-CM-PHC3400X 精密型 μ 級校正儀

LM-CM-PHC3400X PRECISION GRADE TOOL PRESETTER

產品特色 Feature of Product



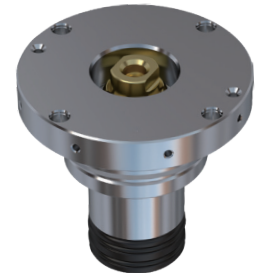
BT30
BT40



BT50



HSK63



依現場需求，主軸適配器可交換使用
Interchangeable spindle adapters are available based on on-site requirements.



真空吸附設計，提高刀桿放置重複精度
The vacuum adsorption function improves the positioning repeatability of the tool bar.

LM-CM-PHC3400X 精密型 μ 級校正儀

LM-CM-PHC3400X PRECISION GRADE TOOL PRESETTER

各部位名稱介紹 Introduction of each parts

可依需求更換 BT30 / BT40 / BT50 / HSK63 主軸適配器
(BT 採雙面拘束，與 BBT 共用)

Available for flexibility in changing with BT30 / BT40 / BT50 / HSK63 spindle adapters.(BT implements a dual-drive system as BBT)

使用高精度無背隙螺桿，穩定量測精度
High quality rod without backlash for accurate measurement

搭載高精度雙線軌與雙滑塊
Adopt high-precision linear rail and double-slider

數顯數據尺
Digimatic height gage



真空吸附開關
Vacuum adsorption switch

X 軸位移手輪
Hand wheel grip for shifting X-axis



LM-OM-PHC3125R

影像測量校正儀

LM-OM-PHC3125R OPTICAL TOOL PRESETTER

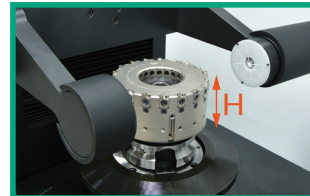
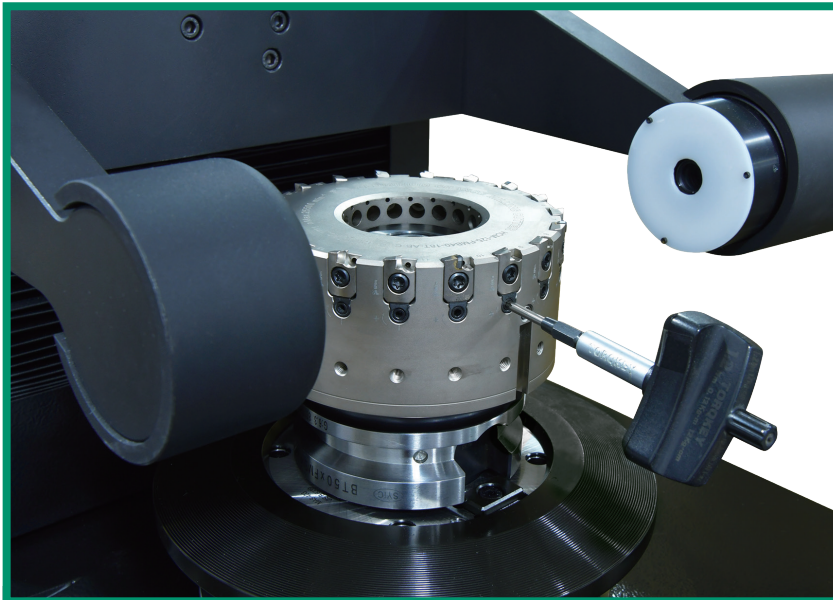


規格 Spec.	量測範圍 Range of Measuring	量測精度 Accuracy of Measuring	電源 Power	機台重量 Weight of Machine
LM-OM-PHC3125R	直徑 Diameter(X) : $\varnothing 125\text{mm}$ 高度 Height(Z) : 70~300mm	0.005mm	220V 50/60Hz 15A	110Kg
機台外型尺寸 Size of Machine	工具櫃尺寸 (選配) Size of Tool Cabinet (Optional)	工具櫃重量 Weight of Tool Cabinet		
790x450x810mm	長 (L)x 寬 (W)x 高 (H) 1050x510x850mm	85Kg		

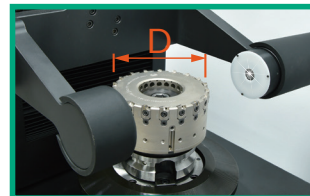
簡化校刀時間、降低生產成本

Simplify the adjusting time of cutting tool, reduce the production cost.

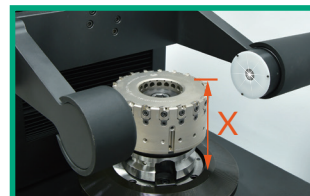
量測方式 Measurement method



刃高校正
Insert Height
Correction



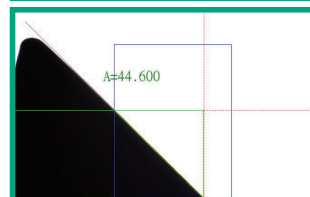
刀刃外徑校正
Blade Outer
Diameter
Correction



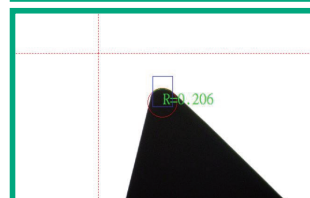
刀長補正
Tool Length
Compensation

可在機台的外側進行量測，當要調整刀具刃高時，可直接進行調整及刀片鎖固螺絲的鎖固，不會有干涉產生，使調整效率更加快速

There's no interference when you adjust the height of flute because you can adjust and lock the insert screw directly, measure it from the outside of machine. It is able to raise the efficiency of measurement.



角度量測
Angle Measuring



圓角量測
Radius Measuring

標準配件

Standard Equipment

圖示 Image	名稱 Name	規格 Spec.
	測試棒 Testing Bar	BT30-TS250L BT40-TS300L BT50-TS300L
	主軸清潔棒 Spindle Cleaner Bar	W30、W40、 W50
	六角扳手組 Hex Wrench Set	LM-PHC-0012

- 依出廠時選定之主軸擇一配置
- Select one specification at the time of shipment.

選配配件

Option Equipment

圖示 Image	名稱 Name	規格 Spec.
	工具櫃 Tool Cabinet	LM-PHC-0011
	BT30 適配器 BT30 Adapter	LM-BA-BT30
	BT40 適配器 BT40 Adapter	LM-BA-BT40
	BT50 適配器 BT50 Adapter	LM-BA-BT50



正河源股份有限公司
CHAIN HEADWAY CO.,LTD.

☎ 電話 TEL /
+886-4-26265252

☎ 傳真 FAX /
+886-4-26267941

📍 地址 Address /
436037台灣台中市清水區五權路232號
No. 232, Wuquan Rd., Qingshui Dist., Taichung City 436037, Taiwan

🌐 網址 Website /
www.chain-headway.com



公司官網(中文)



Website(EN)



LINE



WeChat



Facebook



YouTube