



STH&TPL 攻牙刀桿系列

Tapping holder Series



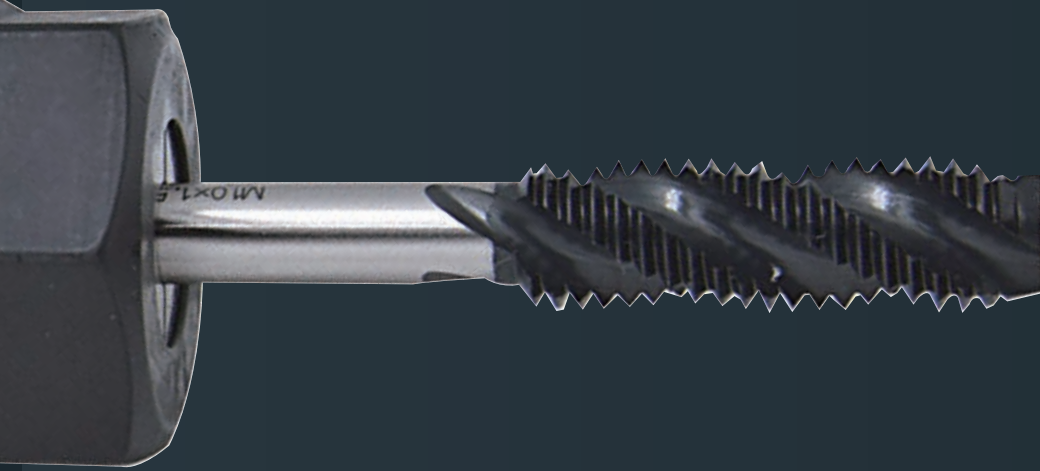
特點

Features



Tapping

解決機台背隙過大的困擾




- 有效消除背隙與過大扭力
Effectively eliminate backlash and excessive torque.
- 提升攻牙質量
High quality tapping.
- 延長絲錐壽命
Extend tap life



STH

同步補償剛性攻牙器

	<i>STH</i>	它牌
絲攻Tap	M3	M3
轉速(S)	1400rpm	1400rpm
進給量(f)	0.5mm/rev	0.5mm/rev
材質Material	S45C	S45C
加工件數Qty.	2000/PCS 	600/PCS

滿足穩定攻牙的需求



攻牙刀桿比較表

Tapping Holder Overview

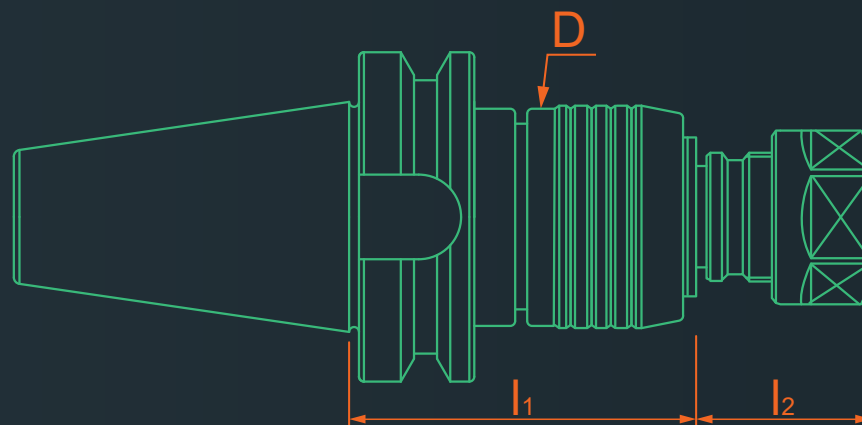
	STH	BT-TPL	ER
穩定性 Stability	++	○	+
筒夾通用性 Flexible by Using Intermediate Sleeves	++	++	++
長度調整 Exact Length	++	+	+
同步補償 Synchro	++	-	-
操作技術 Handling	+	++	++
精度 Accuracy	○	-	+
伸縮量 Expansion	+	++	-
其他周邊工具 Necessary Peripheral Equipments	++	++	++

++ 佳 Very good + 好 Good ○ 普通 Neutral - 不好 Bad



規格

Spec



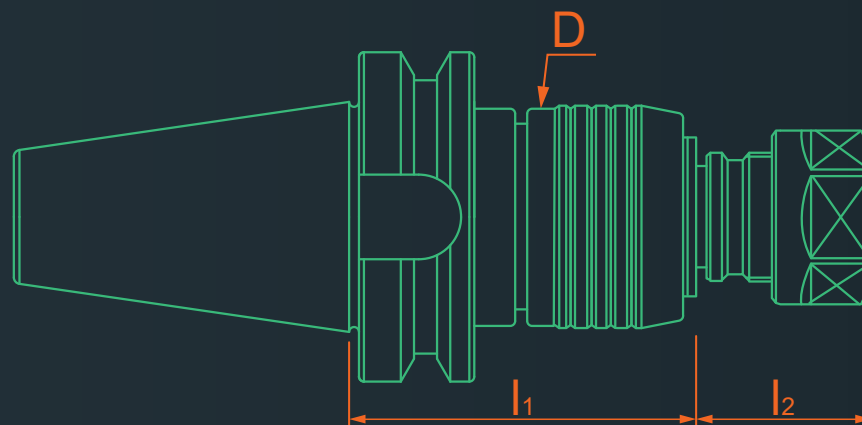
BT-STH-CX 同步補償剛性攻牙器

BT-STH-CX Synchro tapping holder

規格 Spec.	l ₁	l ₂	D	攻牙能力 Capacity	伸縮長度 Length Comp		螺帽 Nut	重量 (KGS) Weight
					縮 (-)Comp	伸 (+)Tens		
BT30xSTH16E-CX	70	25	43.4	M3~M12	-	1	ER16	0.82
BT30xSTH20E-CX	70	25	43.4	M3~M17	-	1	ER20	-
BT40xSTH16E-CX	75	25	43.4	M3~M12	-	1	ER16	-
BT40xSTH20E-CX	75	35	43.4	M3~M17	-	1	ER20	1.52
BT40xSTH32E-CX	95	40	43.4	M10~M24	-	1	ER32	-
BT50xSTH16E-CX	90	25	43.4	M3~M12	-	1	ER16	-
BT50xSTH20E-CX	90	35	43.4	M3~M17	-	1	ER20	-
BT50xSTH32E-CX	105	40	60	M10~M24	-	1	ER32	4.90

規格

Spec

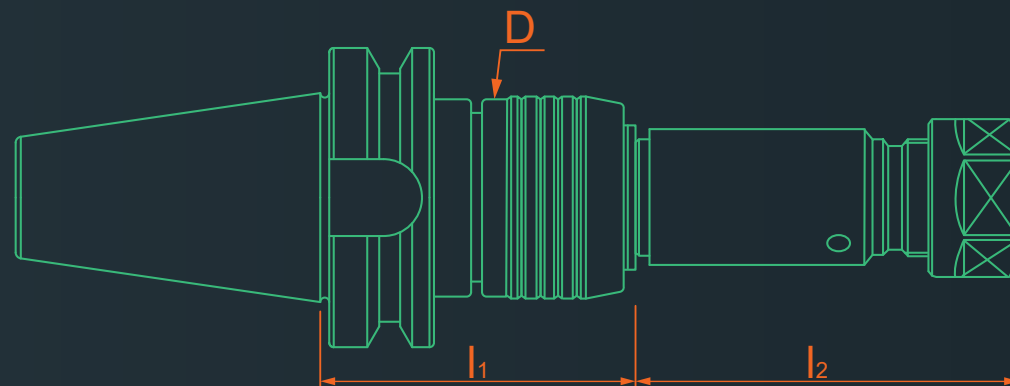


SBT-STH-CX 同步補償剛性攻牙器 SBT-STH-CX Synchro tapping holder

規格 Spec.	l ₁	l ₂	D	攻牙能力 Capacity	伸縮長度 Length Comp		螺帽 Nut	重量 (KGS) Weight
					縮 (-) Comp	伸 (+) Tens		
SBT30xSTH16E-CX	70	25	43.4	M3~M12	-	1	ER16	0.82
SBT30xSTH20E-CX	70	25	43.4	M3~M17	-	1	ER20	-
SBT40xSTH16E-CX	75	25	43.4	M3~M12	-	1	ER16	-
SBT40xSTH20E-CX	75	35	43.4	M3~M17	-	1	ER20	1.52
SBT40xSTH32E-CX	95	40	43.4	M10~M24	-	1	ER32	-
SBT50xSTH16E-CX	90	25	43.4	M3~M12	-	1	ER16	-
SBT50xSTH20E-CX	90	35	43.4	M3~M17	-	1	ER20	-
SBT50xSTH32E-CX	105	40	60	M10~M24	-	1	ER32	4.90

規格

Spec



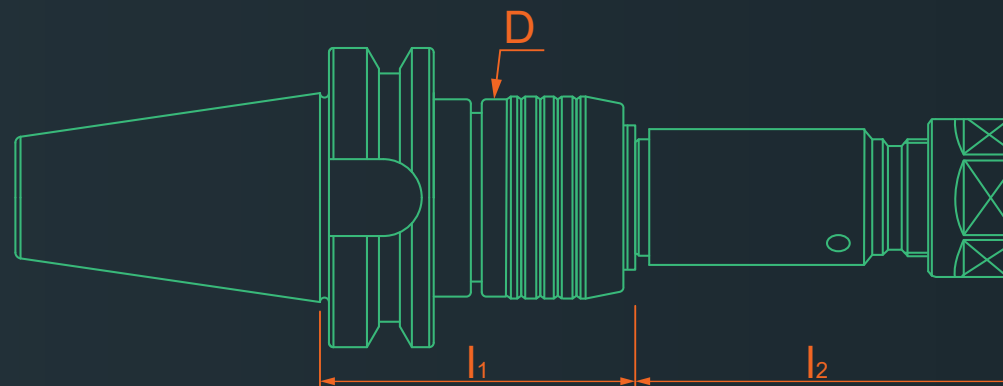
BT-STH-CX 同步補償剛性攻牙器 (加長型)

BT-STH-CX Synchro tapping holder

規格 Spec.	l ₁	l ₂	D	攻牙能力 Capacity	伸縮長度 Length Comp		螺帽 Nut	重量 (KGS) Weight
					縮 (-)Comp	伸 (+)Tens		
BT30xSTH16E-70-CX	70	70	43.4	M3~M12	-	1	ER16	-
BT30xSTH20E-70-CX	70	70	43.4	M3~M17	-	1	ER20	-
BT40xSTH16E-70-CX	75	70	43.4	M3~M12	-	1	ER16	-
BT40xSTH20E-70-CX	75	70	43.4	M3~M17	-	1	ER20	-
BT40xSTH32E-70-CX	95	70	43.4	M10~M24	-	1	ER32	-
BT50xSTH16E-70-CX	90	70	43.4	M3~M12	-	1	ER16	-
BT50xSTH20E-70-CX	90	70	43.4	M3~M17	-	1	ER20	-
BT50xSTH32E-70-CX	105	70	60	M10~M24	-	1	ER32	-

規格

Spec



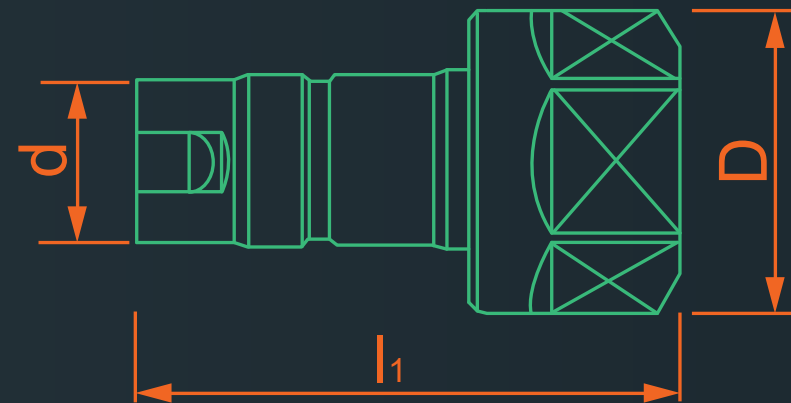
SBT-STH-CX 同步補償剛性攻牙器 (加長型)

SBT-STH-CX Synchro tapping holder

規格 Spec.	l ₁	l ₂	D	攻牙能力 Capacity	伸縮長度 Length Comp		螺帽 Nut	重量 (KGS) Weight
					縮 (-)Comp	伸 (+)Tens		
SBT30xSTH16E-70-CX	70	70	43.4	M3~M12	-	1	ER16	-
SBT30xSTH20E-70-CX	70	70	43.4	M3~M17	-	1	ER20	-
SBT40xSTH16E-70-CX	75	70	43.4	M3~M12	-	1	ER16	-
SBT40xSTH20E-70-CX	75	70	43.4	M3~M17	-	1	ER20	-
SBT40xSTH32E-70-CX	95	70	43.4	M10~M24	-	1	ER32	-
SBT50xSTH16E-70-CX	90	70	43.4	M3~M12	-	1	ER16	-
SBT50xSTH20E-70-CX	90	70	43.4	M3~M17	-	1	ER20	-
SBT50xSTH32E-70-CX	105	70	60	M10~M24	-	1	ER32	-

規格

Spec



STH-ER 替換夾頭柄

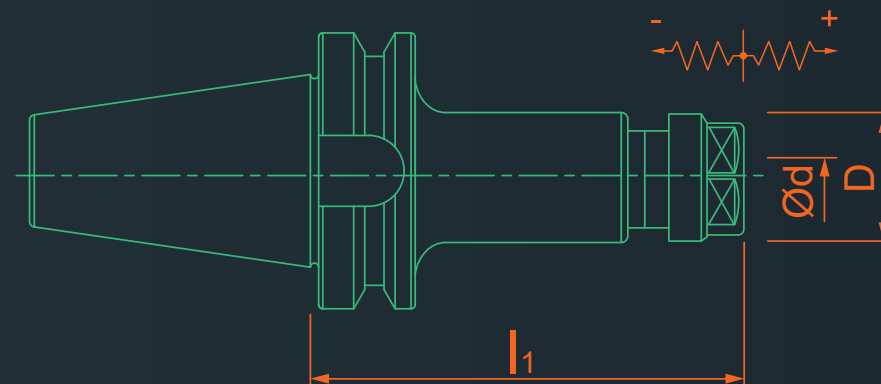
STH-ER Exchange quick change collet

規格 Spec.	l ₁	D	d	攻牙能力 Capacity	重量 (KGS) Weight
STH-ER16	47	28	20	M3~M12	0.10
STH-ER16-70	93	28	20	M3~M12	0.24
STH-ER20	57	34	20	M3~M17	0.14
STH-ER20-70	93	34	20	M3~M17	0.28
STH-ER32	78	50	32	M10~M24	0.44
STH-ER32-70	103	50	32	M10~M24	0.63

※STH-ER16、STH-ER20 可共用攻牙刀桿 STH-ER16 and STH-ER20 can use same tapping holder.

規格

Spec



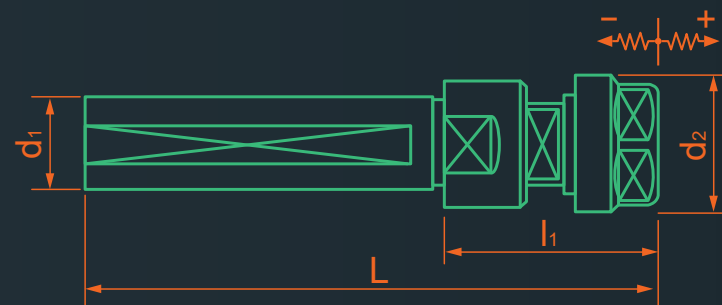
BT-TPL 攻牙刀桿

BT-TPL Tapping Holder

規格 Spec.	l1	D	Ød 夾持範圍 Clamp Range	攻牙能力 Capacity	伸縮長度 Length Comp		筒夾 Collet	重量 (KGS) Weight
					縮 (-)Comp	伸 (+)Tens		
BT30xTPL16-80	80	28	Ø0.5~Ø10.0	M3~M12	3	8	ER16	-
BT30xTPL20-80	80	34	Ø1.0~Ø13.0	M3~M17	3	8	ER20	0.66
BT40xTPL16-80	80	28	Ø0.5~Ø10.0	M3~M12	3	8	ER16	-
BT40xTPL20-80	80	34	Ø1.0~Ø13.0	M3~M17	3	8	ER20	1.24
BT40xTPL32-100	100	50	Ø2.0~Ø20.0	M3~M27	3	10	ER32	-
BT50xTPL16-100	100	28	Ø0.5~Ø10.0	M3~M10	3	8	ER16	-
BT50xTPL20-100	100	34	Ø1.0~Ø13.0	M3~M12	3	8	ER20	-
BT50xTPL32-100	100	50	Ø2.0~Ø20.0	M3~M27	3	10	ER32	-

規格

Spec



TPL 實用型直柄伸縮攻牙器

TPL Practical Straight Shank Tapper

規格 Spec.	L	l ₁	d ₁	d ₂	筒夾 Collet	攻牙能力 Capacity	伸縮量 Stretch Size		重量 (KGS) Weight
							伸 (+)elongation	縮 (-) shorten	
TPL-20	125	45	20	34	ER20	M3~M17	8mm	3mm	0.36
TPL-32	145	65	32	50	ER32	M3~M27	10mm	5mm	1.32



Fig.1

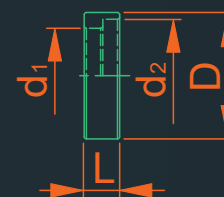
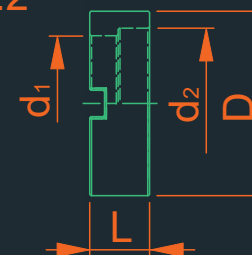


Fig.2



TPL 止縮套環

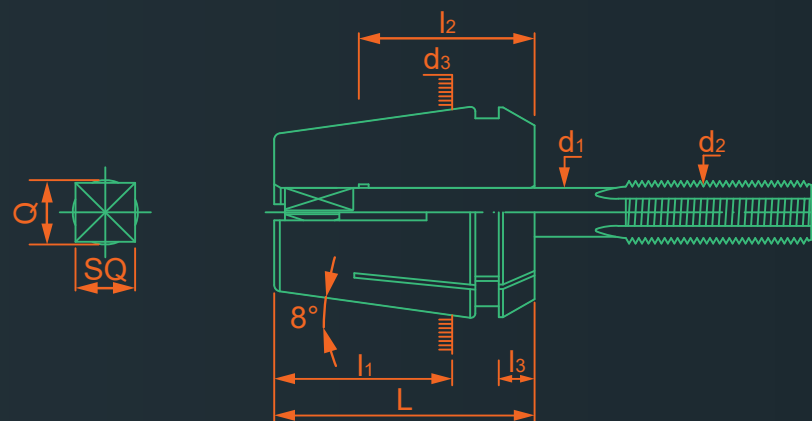
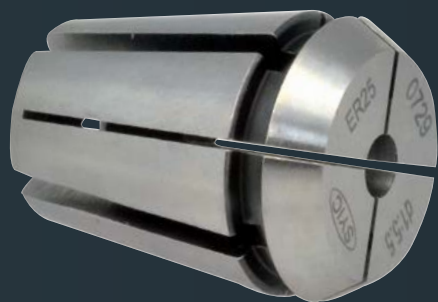
TPL Retreating Free Ring

規格 Spec.	L	D	d ₁	d ₂	Fig.	重量 (KGS) Weight
TPL-20-R	8	28	21	25	1	0.01
TPL-32-R	16	49	36	40	2	0.01



規格

Spec



ER 鋼性攻牙筒夾 ER Ridid tap collet

規格 Spec.	L	l ₁	l ₂	l ₃	d ₁ 範圍 Range	d ₃	攻牙能力 Capacity	重量 (KGS) Weight
ER16-TP	27.5	17.5	18	4.0	1~7	16	M3~M12	0.02
	27.5	17.5	22	4.0	8~10	16	M3~M12	0.02
ER20-TP	31.5	20.7	18	4.8	1~7	20	M3~M17	0.04
	31.5	20.7	22	4.8	8~10	20	M3~M17	0.04
	31.5	20.7	25	4.8	10.5~13	20	M3~M17	0.04
ER25-TP	34	23	18	5.0	1~7	25	M3~M22	0.06
	34	23	22	5.0	8~10	25	M3~M22	0.06
	34	23	25	5.0	10.5~16	25	M3~M22	0.06
ER32-TP	40	27.34	18	5.5	1~7	32	M3~M27	0.14
	40	27.34	22	5.5	8~10	32	M3~M27	0.14
	40	27.34	25	5.5	10.5~16	32	M3~M27	0.14
	40	27.34	28	5.5	17~20	32	M3~M27	0.14
ER40-TP	46	31.4	18	7	1~7	40	M3~M27	0.24
	46	31.4	22	7	8~10	40	M3~M27	0.24
	46	31.4	25	7	10.5~16	40	M3~M27	0.24
	46	31.4	28	7	17~20	40	M3~M27	0.24



規格

Spec

ER16

規格 Spec.	絲攻柄徑 Shank diameter of tapper d ₁	使用絲攻範圍 Tapping range d ₂	
ER16-2.24TP	2.24	M3	ISO - 529
ER16-2.5TP	2.5	M3.5 M3.5	DIN - 376 ISO - 529
ER16-2.8TP	2.8	M4	DIN - 376
ER16-3.15TP	3.15	M3 M4	ISO - 529 ISO - 529
ER16-3.5TP	3.5	M3 M3 M5	DIN - 352 DIN - 371 DIN - 376
ER16-3.55TP	3.55	M3.5 M4.5	ISO - 529 ISO - 529
ER16-4TP	4	M3 M3.5 M3.5 M4 M5	JIS DIN - 352 DIN - 371 ISO - 529 ISO - 529
ER16-4.5TP	4.5	M4 M4 M6 M6	DIN - 362 DIN - 371 DIN - 376 ISO - 529
ER16-5TP	5	M4 M4.5 M5	JIS JIS ISO - 529
ER16-5.5TP	5.5	M5 M5.5	JIS JIS

規格 Spec.	絲攻柄徑 Shank diameter of tapper d ₁	使用絲攻範圍 Tapping range d ₂	
ER16-6TP	6	M5 M5 M6 M6 M8 M8	DIN - 352 DIN - 371 JIS DIN - 352 DIN - 371 DIN - 352 DIN - 376
ER16-6.2TP	6.2	M7 M8	JIS JIS
ER16-6.3TP	6.3	M6 M8	ISO - 529 ISO - 529
ER16-7TP	7	M9 M10 M10 M10	JIS JIS DIN - 352 DIN - 376
ER16-8TP	8	M8 M8 M10 M11	DIN - 371 ISO - 529 ISO - 529 JIS
ER16-8.5TP	8.5	M12	JIS
ER16-9TP	9	M12 M12 M12	DIN - 352 DIN - 376 ISO - 529
ER16-10TP	10	M10 M10	DIN - 371 ISO - 529

規格

Spec

ER20

規格 Spec.	絲攻柄徑 Shank diameter of tapper d ₁	使用絲攻範圍 Tapping range d ₂	
ER20-2.24TP	2.24	M3	ISO - 529
ER20-2.5TP	2.5	M3.5 M3.5	DIN - 376 DIN - 529
ER20-2.8TP	2.8	M4	DIN - 376
ER20-3.15TP	3.15	M3 M4	ISO - 529 ISO - 529
ER20-3.5TP	3.5	M3 M3 M5	DIN - 352 DIN - 371 DIN - 376
ER20-3.55TP	3.55	M3.5 M4.5	ISO - 529 ISO - 529
ER20-4TP	4	M3 M3.5 M3.5 M4 M5	JIS DIN - 352 DIN - 371 ISO - 529 ISO - 529
ER20-4.5TP	4.5	M4 M4 M6 M6	DIN - 362 DIN - 371 DIN - 376 ISO - 529
ER20-5TP	5	M4 M4.5 M5	JIS JIS ISO - 529
ER20-5.5TP	5.5	M5 M5.5	JIS JIS
ER20-6TP	6	M5 M5 M6 M6 M6 M8 M8	DIN - 352 DIN - 371 JIS DIN - 352 DIN - 371 DIN - 352 DIN - 376

規格 Spec.	絲攻柄徑 Shank diameter of tapper d ₁	使用絲攻範圍 Tapping range d ₂	
ER20-6.2TP	6.2	M7 M8	JIS JIS
ER20-6.3TP	6.3	M6 M8	ISO - 529 ISO - 529
ER20-7TP	7	M9 M10 M10 M10	JIS JIS DIN - 352 DIN - 376
ER20-8TP	8	M8 M8 M10 M11	DIN - 371 ISO - 529 ISO - 529 JIS
ER20-8.5TP	8.5	M12	JIS
ER20-9TP	9	M12 M12 M12	DIN - 352 DIN - 376 ISO - 529
ER20-10TP	10	M10 M10	DIN - 371 ISO - 529
ER20-10.5TP	10.5	M14 M15	JIS JIS
ER20-11TP	11	M14 M14	DIN - 352 DIN - 376
ER20-11.2TP	11.2	M14	ISO - 529
ER20-12TP	12	M16 M16	DIN - 352 DIN - 376
ER20-12.5TP	12.5	M16 M16	JIS ISO - 529
ER20-13TP	13	M17	JIS



規格

Spec

ER25

規格 Spec.	絲攻柄徑 Shank diameter of taper d ₁	使用絲攻範圍 Tapping range d ₂	
ER25-2.24TP	2.24	M3	ISO - 529
ER25-2.5TP	2.5	M3.5 M3.5	DIN - 376 ISO - 529
ER25-2.8TP	2.8	M4	DIN - 376
ER25-3.15TP	3.15	M3 M4	ISO - 529 ISO - 529
ER25-3.5TP	3.5	M3 M3 M5	DIN - 352 DIN - 371 DIN - 376
ER25-3.55TP	3.55	M3.5 M4.5	ISO - 529 ISO - 529
ER25-4TP	4	M3 M3.5 M3.5 M4 M5	JIS DIN - 352 DIN - 371 ISO - 529 ISO - 529
ER25-4.5TP	4.5	M4 M4 M6 M6	DIN - 362 DIN - 371 DIN - 376 ISO - 529
ER25-5TP	5	M4 M4.5 M5	JIS JIS ISO - 529
ER25-5.5TP	5.5	M5 M5.5	JIS JIS
ER25-6TP	6	M5 M5 M6 M6 M6 M8 M8	DIN - 352 DIN - 371 JIS DIN - 352 DIN - 371 DIN - 352 DIN - 376
ER25-6.2TP	6.2	M7 M8	JIS JIS
ER25-6.3TP	6.3	M6 M8	ISO - 529 ISO - 529

規格 Spec.	絲攻柄徑 Shank diameter of taper d ₁	使用絲攻範圍 Tapping range d ₂	
ER25-7TP	7	M9 M10 M10 M10	JIS JIS DIN - 352 DIN - 376
ER25-8TP	8	M8 M8 M10 M11	DIN - 371 ISO - 529 ISO - 529 JIS
ER25-8.5TP	8.5	M12	JIS
ER25-9TP	9	M12 M12 M12	DIN - 352 DIN - 376 ISO - 529
ER25-10TP	10	M10 M10	DIN - 371 ISO - 529
ER25-10.5TP	10.5	M14 M15	JIS JIS
ER25-11TP	11	M14 M14	DIN - 352 DIN - 376
ER25-11.2TP	11.2	M14	ISO - 529
ER25-12TP	12	M16 M16	DIN - 352 DIN - 376
ER25-12.5TP	12.5	M16	JIS
ER25-12.5TP	12.5	M16	ISO - 529
ER25-13TP	13	M17	JIS
ER25-14TP	14	M18 M18 M18 M18 M20	JIS DIN - 352 DIN - 376 ISO - 529 ISO - 529
ER25-15TP	15	M20	JIS
ER25-16TP	16	M20 M20 M22	DIN - 352 DIN - 376 ISO - 529

規格

Spec

ER32

規格 Spec.	絲攻柄徑 Shank diameter of taper d ₁	使用絲攻範圍 Tapping range d ₂	
ER32-2.24TP	2.24	M3	ISO - 529
ER32-2.5TP	2.5	M3.5 M3.5	DIN - 376 ISO - 529
ER32-2.8TP	2.8	M4	DIN - 376
ER32-3.15TP	3.15	M3 M4	ISO - 529 ISO - 529
ER32-3.5TP	3.5	M3 M3 M5	DIN - 352 DIN - 371 DIN - 376
ER32-3.55TP	3.55	M3.5 M4.5	ISO - 529 ISO - 529
ER32-4TP	4	M3 M3.5 M3.5 M4 M5	JIS DIN - 352 DIN - 371 ISO - 529 ISO - 529
ER32-4.5TP	4.5	M4 M4 M6 M6	DIN - 362 DIN - 371 DIN - 376 ISO - 529
ER32-5TP	5	M4 M4.5 M5	JIS JIS ISO - 529
ER32-5.5TP	5.5	M5 M5.5	JIS JIS
ER32-6TP	6	M5 M5 M6 M6 M6 M8 M8	DIN - 352 DIN - 371 JIS DIN - 352 DIN - 371 DIN - 352 DIN - 376
ER32-6.2TP	6.2	M7 M8	JIS JIS
ER32-6.3TP	6.3	M6 M8	ISO - 529 ISO - 529
ER32-7TP	7	M9 M10 M10 M10 M10	JIS JIS DIN - 352 DIN - 352 DIN - 376
ER32-8TP	8	M8 M8 M10 M11	DIN - 371 ISO - 529 ISO - 529 JIS
ER32-8.5TP	8.5	M12	JIS

規格 Spec.	絲攻柄徑 Shank diameter of taper d ₁	使用絲攻範圍 Tapping range d ₂	
ER32-9TP	9	M12 M12 M12	DIN - 352 DIN - 376 ISO - 529
ER32-10TP	10	M10 M10	DIN - 371 ISO - 529
ER32-10.5TP	10.5	M14 M15	JIS JIS
ER32-11TP	11	M14 M14	DIN - 352 DIN - 376
ER32-11.2TP	11.2	M14	ISO - 529
ER32-12TP	12	M16 M16	DIN - 352 DIN - 376
ER32-12.5TP	12.5	M16 M16	JIS ISO - 529
ER32-13TP	13	M17	JIS
ER32-14TP	14	M18 M18 M18 M18 M20	JIS DIN - 352 DIN - 376 ISO - 529 ISO - 529
ER32-15TP	15	M20	JIS
ER32-16TP	16	M20 M20 M22	DIN - 352 DIN - 376 ISO - 529
ER32-17TP	17	M22	JIS
ER32-18TP	18	M22 M22 M24 M24 M24	DIN - 352 DIN - 376 DIN - 352 DIN - 736 ISO - 529
ER32-19TP	19	M24 M25	JIS JIS
ER32-20TP	20	M26 M27	JIS JIS

規格

Spec

ER40

規格 Spec.	絲攻柄徑 Shank diameter of taper d ₁	使用絲攻範圍 Tapping range d ₂	
ER40-2.24TP	2.24	M3	ISO - 529
ER40-2.5TP	2.5	M3.5 M3.5	DIN - 376 ISO - 529
ER40-2.8TP	2.8	M4	DIN - 376
ER40-3.15TP	3.15	M3 M4	ISO - 529 ISO - 529
ER40-3.5TP	3.5	M3 M3 M5	DIN - 352 DIN - 371 DIN - 376
ER40-3.55TP	3.55	M3.5 M4.5	ISO - 529 ISO - 529
ER40-4TP	4	M3 M3.5 M3.5 M4 M5	JIS DIN - 352 DIN - 371 ISO - 529 ISO - 529
ER40-4.5TP	4.5	M4 M4 M6 M6	DIN - 352 DIN - 371 DIN - 376 ISO - 529
ER40-5TP	5	M4 M4.5 M5	JIS JIS ISO - 529
ER40-5.5TP	5.5	M5 M5.5	JIS JIS
ER40-6TP	6	M5 M5 M6 M6 M6 M8 M8	DIN - 352 DIN - 371 JIS DIN - 352 DIN - 371 DIN - 352 DIN - 376
ER40-6.2TP	6.2	M7 M8	JIS JIS
ER40-6.3TP	6.3	M6 M8	ISO - 529 ISO - 529
ER40-7TP	7	M9 M10 M10 M10 M10	JIS JIS DIN - 352 DIN - 352 DIN - 376
ER40-8TP	8	M8 M8 M10 M11	DIN - 371 ISO - 529 ISO - 529 JIS

規格 Spec.	絲攻柄徑 Shank diameter of taper d ₁	使用絲攻範圍 Tapping range d ₂	
ER40-8.5TP	8.5	M12	JIS
ER40-9TP	9	M12 M12 M12	DIN - 352 DIN - 376 ISO - 529
ER40-10TP	10	M10 M10	DIN - 371 ISO - 529
ER40-10.5TP	10.5	M14 M15	JIS JIS
ER40-11TP	11	M14 M14	DIN - 352 DIN - 376
ER40-11.2TP	11.2	M14	ISO - 529
ER40-12TP	12	M16 M16	DIN - 352 DIN - 376
ER40-12.5TP	12.5	M16 M16	JIS ISO - 529
ER40-13TP	13	M17	JIS
ER40-14TP	14	M18 M18 M18 M18 M20	JIS DIN - 352 DIN - 376 ISO - 529 ISO - 529
ER40-15TP	15	M20	JIS
ER40-16TP	16	M20 M20 M22	DIN - 352 DIN - 376 ISO - 529
ER40-17TP	17	M22	JIS
ER40-18TP	18	M22 M22 M24 M24 M24	DIN - 352 DIN - 376 DIN - 352 DIN - 376 ISO - 529
ER40-19TP	19	M24 M25	JIS JIS
ER40-20TP	20	M26 M27	JIS JIS



正河源機械配件有限公司
CHAIN HEADWAY MACHINE TOOLS CO.,LTD

+886-4-26265252

+86-0512-57874601

+886-4-26267941

+86-0512-57874602

台灣台中市清水區高美路231巷15號

中國江蘇省昆山市陸豐東路模具城J區12號樓

新廠地址

台灣台中市清水區五權路232號

www.chain-headway.com

[youtube.com/chmt99](https://www.youtube.com/channel/UC99)

twitter.com/ChainHeadway

[facebook.com/ChainHeadway\(Taiwan/Myanmar/Philippines/India\)](https://www.facebook.com/ChainHeadway(Taiwan/Myanmar/Philippines/India))

公司聯絡資訊請貼此處

其他服務據點訊息透過官網查詢