

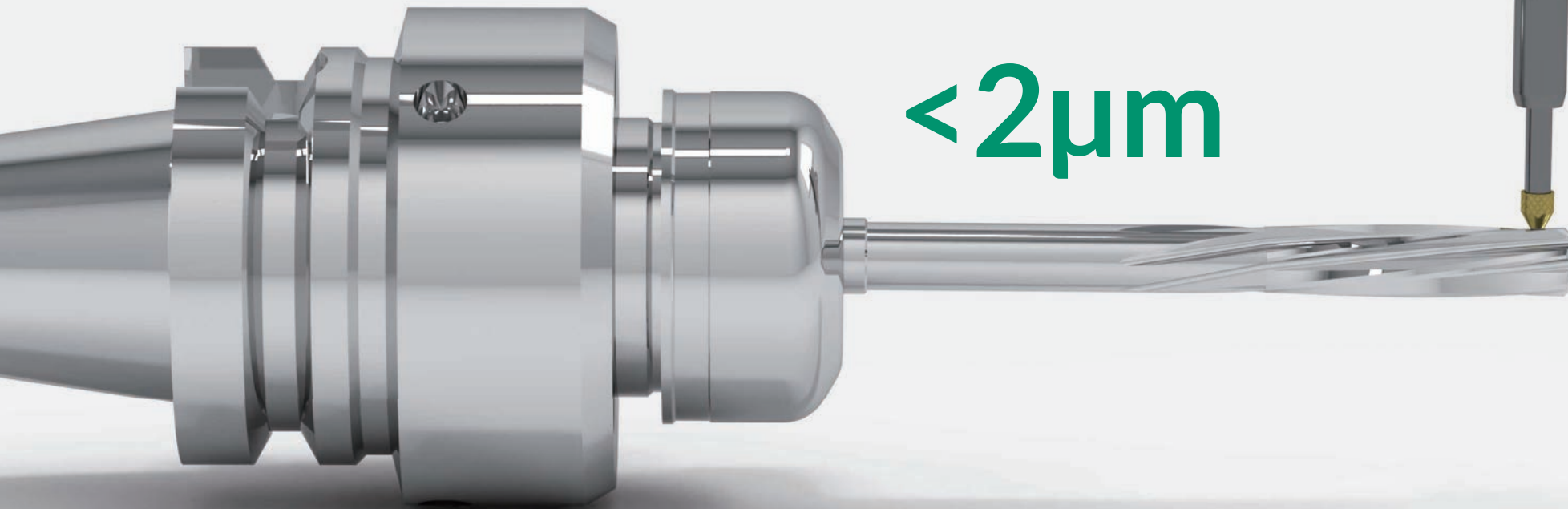
SBF 可調式徑向歸零刀桿&鎢鋼鉸刀
Radial Zero Adjustable Holder & Machine Reamers

 **CHAIN
HEADWAY**
Cutting Edge Solution

延長刀具壽命 Extend the tool life.

加工尺寸穩定 Keep the machining performance steady.

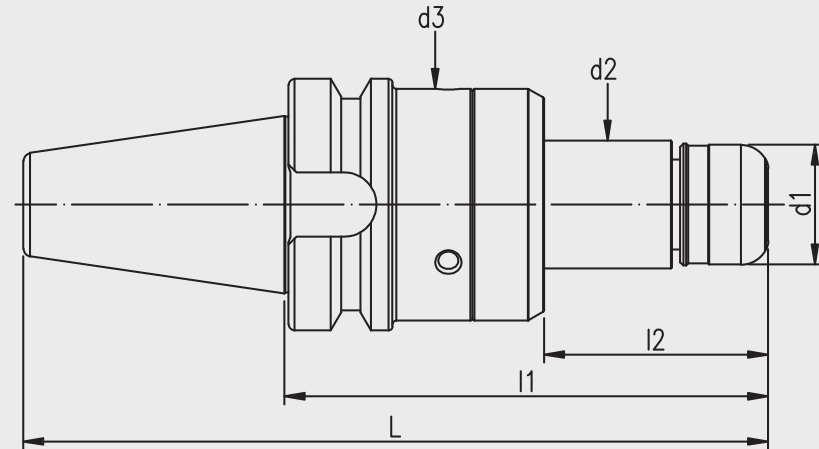
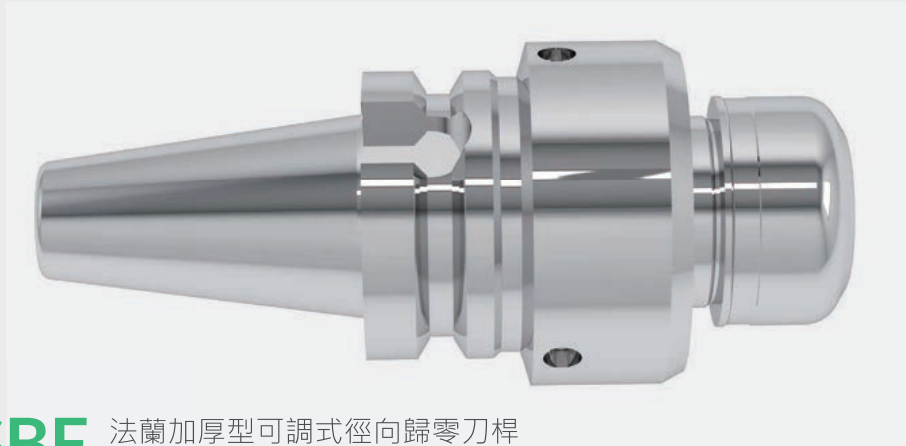
提升表面粗糙度 Improve the surface roughness.



可調式徑向歸零刀桿與市場上其他可調式刀桿比較表

Adjustable holder comparison table

	SAF	SBF	台製	日製
調整方向 Direction	軸向、徑向 Axial、Radial	徑向 Radial	徑向 Radial	徑向 Radial
調整精度 Precision	<0.002	<0.002	<0.005	<0.002
調整便利 Convenient	★★★	★★★★★	★★★★★	★★★★★★
穩定性 Stabilities	★★★★★★	★★★★★	★★	★★★★★★
價格 Price	高 High	中 Middle	中 Middle	最高 Highest

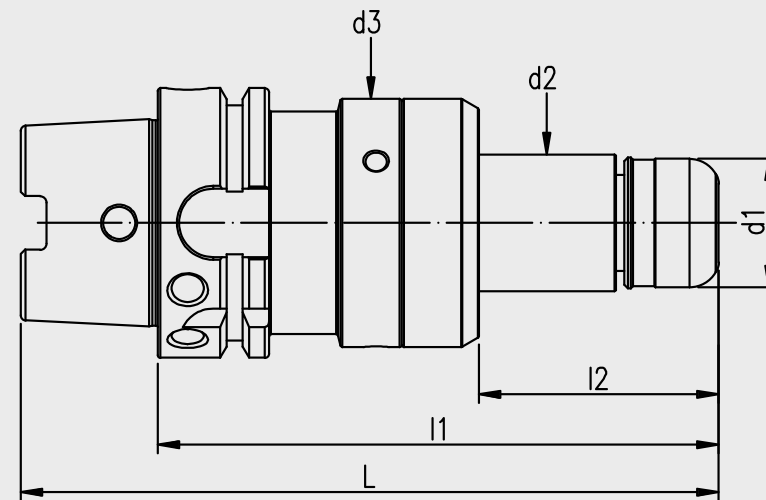
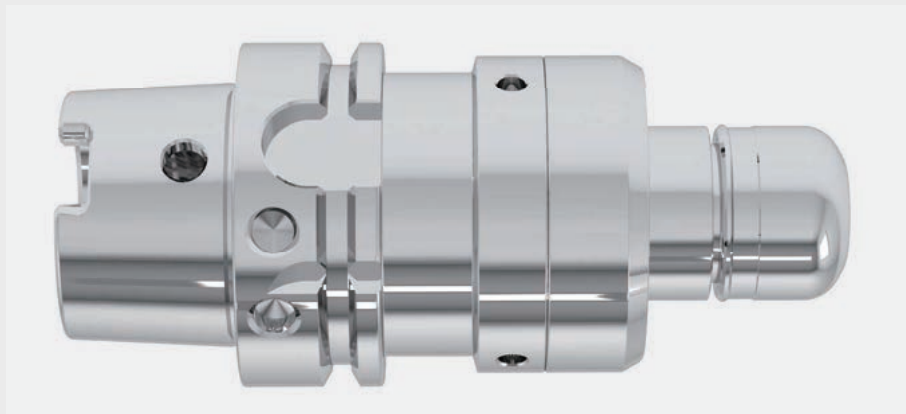


SBF 法蘭加厚型可調式徑向歸零刀桿
Radial Zero Adjustable Holder

規格 Spec.	L	l1	l2	d1	d2	d3	COLLET	重量 WEIGHT(KGS)
• SBT30xSBF16PN-90	138.4	90	27	30	32	58	PN16	1.16
• SBT30xSBF20PN-90	138.4	90	27	32	32	58	PN20	1.14
• SBT40xSBF16PN-100	165.4	100	42	30	32	58	PN16	1.70
• SBT40xSBF16PN-150	215.4	150	92	30	32	58	PN16	1.98
• SBT40xSBF20PN-100	165.4	100	32	32	32	58	PN20	1.68
• SBT40xSBF20PN-150	215.4	150	92	32	32	58	PN20	1.95
• SBT40xSBF25PN-100	165.4	100	32	40	42	75	PN25	2.31
• SBT40xSBF25PN-150	215.4	150	82	40	42	75	PN25	2.79
• SBT40xSBF32PN-100	165.4	100	34	50	42	75	PN32	2.24
• SBT40xSBF32PN-150	215.4	150	82	50	42	75	PN32	2.82
• SBT50xSBF16PN-110	211.8	110	42	30	32	58	PN16	4.29
• SBT50xSBF16PN-160	261.8	160	92	30	32	58	PN16	4.60
• SBT50xSBF20PN-110	211.8	110	42	32	32	58	PN20	4.24
• SBT50xSBF20PN-160	261.8	160	92	32	32	58	PN20	4.55
• SBT50xSBF25PN-110	211.8	110	37	40	42	75	PN25	4.82
• SBT50xSBF25PN-160	261.8	160	87	40	42	75	PN25	5.26
• SBT50xSBF32PN-120	221.8	120	47	50	42	75	PN32	4.94
• SBT50xSBF32PN-160	261.8	160	87	50	42	75	PN32	5.30

• 庫存產品

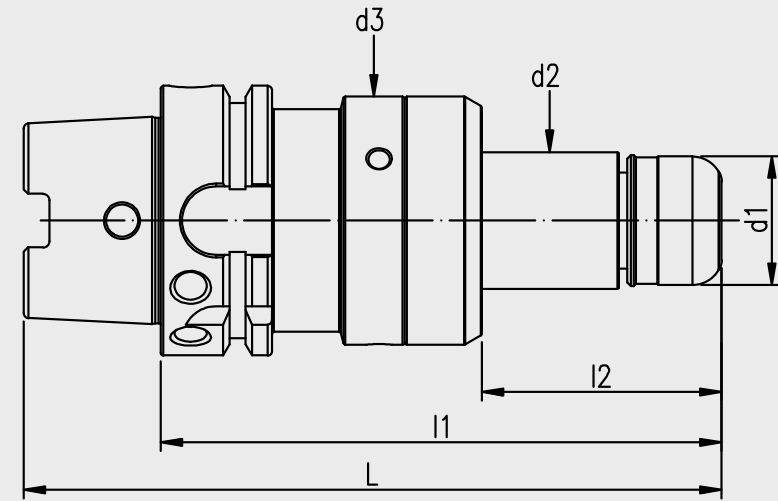




SBF 可調式徑向歸零刀桿
Radial Zero Adjustable Holder

規格 Spec.	L	l1	l2	d1	d2	d3	COLLET	重量 WEIGHT(KGS)
HSK40AxSBF16PN-160	180	160	92	30	32	58	PN16	1.37
HSK40AxSBF20PN-110	130	110	42	32	32	58	PN20	1.04
HSK40AxSBF20PN-160	180	160	92	32	32	58	PN20	1.35
HSK50AxSBF16PN-110	135	110	37	30	32	58	PN16	1.26
HSK50AxSBF16PN-160	185	160	87	30	32	58	PN16	1.56
HSK50AxSBF20PN-110	135	110	37	32	32	58	PN20	1.24
HSK50AxSBF20PN-160	185	160	87	32	32	58	PN20	1.54
HSK63AxSBF16PN-110	142	110	37	30	32	58	PN16	1.62
HSK63AxSBF16PN-160	192	160	87	30	32	58	PN16	1.91
• HSK63AxSBF20PN-110	142	110	37	32	32	58	PN20	1.60
HSK63AxSBF20PN-160	192	160	87	32	32	58	PN20	1.89
HSK63AxSBF25PN-110	142	110	32	40	42	75	PN25	2.16
HSK63AxSBF25PN-160	192	160	82	40	42	75	PN25	2.68
• HSK63AxSBF32PN-120	152	120	42	50	42	75	PN32	2.23
HSK63AxSBF32PN-160	192	160	82	50	42	75	PN32	2.69
HSK80AxSBF16PN-100	140	100	44	30	32	58	PN16	1.81

• 庫存產品



SBF 可調式徑向歸零刀桿
Radial Zero Adjustable Holder

規格 Spec.	L	l1	l2	d1	d2	d3	COLLET	重量 WEIGHT(KGS)
HSK80AxSBF16PN-150	190	150	94	30	32	58	PN16	2.10
HSK80AxSBF20PN-100	140	100	44	32	32	58	PN20	1.80
HSK80AxSBF20PN-150	190	150	94	32	32	58	PN20	2.08
HSK80AxSBF25PN-110	150	110	32	40	42	75	PN25	2.81
HSK80AxSBF25PN-160	200	160	82	40	42	75	PN25	3.32
HSK80AxSBF32PN-120	160	120	42	50	42	75	PN32	2.87
HSK80AxSBF32PN-160	200	160	82	50	42	75	PN32	3.33
HSK100AxSBF16PN-105	155	105	47	30	32	58	PN16	2.72
HSK100AxSBF16PN-155	205	155	97	30	32	58	PN16	2.99
HSK100AxSBF20PN-105	155	105	47	32	32	58	PN20	2.70
HSK100AxSBF20PN-155	205	155	97	32	32	58	PN20	2.98
• HSK100AxSBF25PN-105	155	105	42	40	42	75	PN25	3.31
HSK100AxSBF25PN-155	205	155	92	40	42	75	PN25	3.81
HSK100AxSBF32PN-115	165	115	52	50	42	75	PN32	3.40
HSK100AxSBF32PN-155	205	155	92	50	42	75	PN32	3.79

• 庫存產品



MRU 超微粒鎢鋼機械鉸刀 Machine Reamers

刃徑公差H7 / 柄徑公差h6 / 顆粒大小(Particle size) 0.6um



歐洲頂級鎢鋼材料

Europe Top
Tungsten Steel Materials

瑞士設備生產

Produced By The
Swiss Machine

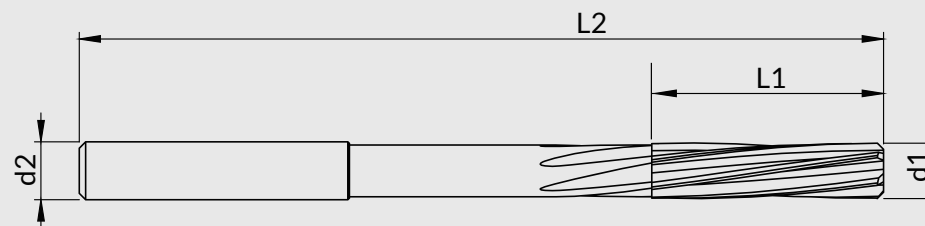
德國檢驗設備把關

Inspected By
German Equipment



MRU 超微粒鎢鋼機械鉸刀
Machine Reamers

規格 Spec.	刃徑 d1	刃長 L1	全長 L2	柄徑 d2	刃數 Teeth	螺旋角 Angle	工件材質 Workpiece aterial
MRU607-020030	2	11	49	3	6	7度	<div style="display: flex; flex-direction: column; align-items: center; gap: 5px;"> <div style="background-color: #000080; color: white; padding: 2px 5px;">P</div> <div style="background-color: #ffff00; color: black; padding: 2px 5px;">M</div> <div style="background-color: #ff0000; color: white; padding: 2px 5px;">K</div> <div style="background-color: #008000; color: white; padding: 2px 5px;">N</div> <div style="background-color: #333333; color: white; padding: 2px 5px;">H</div> </div>
MRU607-025030	2.5	14	57	3	6	7度	
MRU607-030030	3	15	61	3	6	7度	
MRU607-035035	3.5	18	70	3.5	6	7度	
MRU607-040040	4	19	75	4	6	7度	
MRU607-045045	4.5	21	80	4.5	6	7度	
MRU607-050050	5	23	86	5	6	7度	
MRU607-055055	5.5	26	93	5.5	6	7度	
MRU607-060060	6	26	93	6	6	7度	
MRU607-065065	6.5	28	101	6.5	6	7度	
MRU607-070070	7	31	109	7	6	7度	



MRU 超微粒鎢鋼機械鉸刀
Machine Reamers

規格 Spec.	刃徑 d1	刃長 L1	全長 L2	柄徑 d2	刃數 Teeth	螺旋角 Angle	工件材質 Workpiece aterial
MRU607-075075	7.5	31	109	7.5	6	7度	<div style="display: flex; flex-direction: column; align-items: center; gap: 5px;"> <div style="background-color: #000080; color: white; padding: 2px 5px;">P</div> <div style="background-color: #ffff00; color: black; padding: 2px 5px;">M</div> <div style="background-color: #ff0000; color: white; padding: 2px 5px;">K</div> <div style="background-color: #008000; color: white; padding: 2px 5px;">N</div> <div style="background-color: #333333; color: white; padding: 2px 5px;">H</div> </div>
MRU607-080080	8	33	117	8	6	7度	
MRU607-085085	8.5	33	117	8.5	6	7度	
MRU607-090090	9	36	125	9	6	7度	
MRU607-095095	9.5	36	125	9.5	6	7度	
MRU607-100100	10	38	133	10	6	7度	
MRU607-105105	10.5	38	133	10.5	6	7度	
MRU607-110110	11	41	142	11	6	7度	
MRU607-115115	11.5	41	142	11.5	6	7度	
MRU607-120120	12	44	151	12	6	7度	

鉸刀的保存

Save of the reamer

鉸刀是表面鉸光的工具，容易受損，為防受損應個別置於塑膠套中以利儲存及運送。

良好的保存刀具有利於後續生產的穩定性以及延長刀具壽命。

The reamer is a surface reaming tool that is easily damaged. To prevent from the damage, it should be stored with plastic sleeve while delivery.

Storing the reamer well is beneficial to the stable production and tool life.

適用加工數據

Applicable Parameter

被加工材質 Machining Materials	切削速度 Vc(m/min)	f 每刃進給率 (mm/min)						
		Ø3	Ø4	Ø5	Ø6	Ø8	Ø10	Ø12
P 低合金鋼 Low-Alloy Steels	Vc=10~12	0.02~0.03	0.025~0.045	0.04~0.06	0.05~0.09	0.06~0.15	0.07~0.13	0.08~0.15
	高合金鋼 High-Alloyed Steels	Vc=8~15	0.02~0.03	0.025~0.045	0.04~0.06	0.05~0.09	0.06~0.15	0.07~0.13
M 不鏽鋼 Stainless Steels	Vc=10~20	0.018~0.03	0.028~0.045	0.04~0.06	0.05~0.09	0.06~0.12	0.06~0.12	0.08~0.15
K 鑄鐵 Cast Iron	Vc=8~15	0.008~0.015	0.028~0.045	0.04~0.06	0.05~0.09	0.06~0.12	0.07~0.13	0.08~0.15
N 鋁合金 Aluminum&Al	Vc=5~10	0.018~0.03	0.028~0.045	0.04~0.06	0.06~0.09	0.07~0.12	0.08~0.17	0.08~0.18
	銅 Copper	Vc=4~10	0.018~0.03	0.028~0.045	0.04~0.06	0.05~0.09	0.07~0.13	0.08~0.15
H 硬化鋼 HRC(30~38) Hardened Steel	Vc=5~10	0.02~0.03	0.025~0.045	0.04~0.06	0.05~0.09	0.06~0.15	0.07~0.13	0.08~0.15
	硬化鋼 HRC(38~48) Hardened Steel	Vc=4~10	0.01~0.02	0.012~0.03	0.015~0.035	0.02~0.05	0.025~0.055	0.025~0.06



適用加工數據

Applicable Parameter

被加工材質 Machining Materials		切削速度 Vc(m/min)	切削餘量 (mm)						
			Ø3	Ø4	Ø5	Ø6	Ø8	Ø10	Ø12
P	低合金鋼 Low-Alloy Steels	Vc=10~12	0.05~0.15	0.1~0.2	0.1~0.2	0.1~0.2	0.1~0.2	0.1~0.2	0.1~0.2
	高合金鋼 High-Alloyed Steels	Vc=8~15	0.05~0.15	0.1~0.2	0.1~0.2	0.1~0.2	0.1~0.2	0.1~0.2	0.1~0.2
M	不鏽鋼 Stainless Steels	Vc=10~20	0.05~0.15	0.1~0.2	0.1~0.2	0.1~0.2	0.1~0.2	0.1~0.2	0.1~0.2
K	鑄鐵 Cast Iron	Vc=8~15	0.05~0.1	0.05~0.1	0.05~0.1	0.05~0.1	0.05~0.1	0.05~0.1	0.05~0.1
N	鋁合金 Aluminum&Al	Vc=5~10	0.05~0.15	0.1~0.2	0.1~0.2	0.1~0.2	0.1~0.2	0.1~0.2	0.1~0.2
	銅 Copper	Vc=4~10	0.05~0.15	0.1~0.2	0.1~0.2	0.1~0.2	0.1~0.2	0.1~0.2	0.1~0.2
H	硬化鋼 HRC(30~38) Hardened Steel	Vc=5~10	0.05~0.15	0.1~0.2	0.1~0.2	0.1~0.2	0.1~0.2	0.1~0.2	0.1~0.2
	硬化鋼 HRC(38~48) Hardened Steel	Vc=4~10	0.03~0.08	0.03~0.08	0.03~0.08	0.03~0.08	0.03~0.08	0.03~0.08	0.03~0.08



正河源股份有限公司
CHAIN HEADWAY CO.,LTD.

☎ TEL : +886-4-26265252

☎ FAX : +886-4-26267941

📍 地址 : 台灣台中市清水區五權路232號
No. 232, Wuquan Rd., Qingshui Dist., Taichung City 436, Taiwan

🌐 網址 : www.chain-headway.com



Website(中文)



Website(EN)



LINE



Whatsapp



Wechat



Facebook



YouTube

公司聯絡資訊請貼於此處
Company Information Please Paste here

其他服務據點訊息請透過官網查詢
Other Sales Region Please Review Our Website