



PNER 立銑刀夾頭系列
Collet Chuck Series

PNER

立銑刀夾頭系列

偏擺精度 $< 3\mu\text{m}$

PNER刀桿及筒夾可提升加工精度，減少昂貴的再加工時間；延長刀具壽命，使機台主軸精度能維持更久；降低整體生產成本，提高生產效益。其產品特色如下：

- 一、優化設計使**PNER**刀桿擁有高精度等級（偏擺精度 $< 3\mu\text{m}$ ），實踐證明刀桿偏擺精度每提升**10 μm** ，刀具使用壽命能延長**25%**。
- 二、高強度高剛性結構源於**PNER**系列嚴謹的生產製程，使用高端生產設備與更精準的量具，確保了卓越品質。
- 三、**PNER**刀桿針對夾持力進行設計提升，筒夾更合理化精進增加本身強度，且與刀桿和螺帽接觸更穩定且紮實，螺帽經過特殊鍍層，強化挾持力，較市場上常見螺帽夾持力提升**30%**以上。
- 四、在動平衡方面，除刀桿本身對稱設計搭配無風阻螺帽，還標配含**G2.5**精密動平衡等級，使其轉速在**25000rpm**時都能輕鬆應對。



台灣精品 2017
TAIWAN EXCELLENCE

PRECISE



HIGH ACCURATE

特點 Feature

PNER螺帽無風阻設計，在高速加工下，減少風切產生之振刀現象，改善工件表面精度

Non-wind resistance design for PNER nut decreases the vibration generated from wind-shear in high speed cutting process and improve work-piece surface roughness.

PNER刀桿本體於螺紋上、下端各設計有一直部，與螺帽內部對應。鎖固結合後，公差更為精準，提升刀桿整體同心度及加工穩定性。

Special structure design near the thread for PNER chuck body fits well with nut, locking tightly each other improving the accuracy、concentricity and machining stability.



BT



SBT



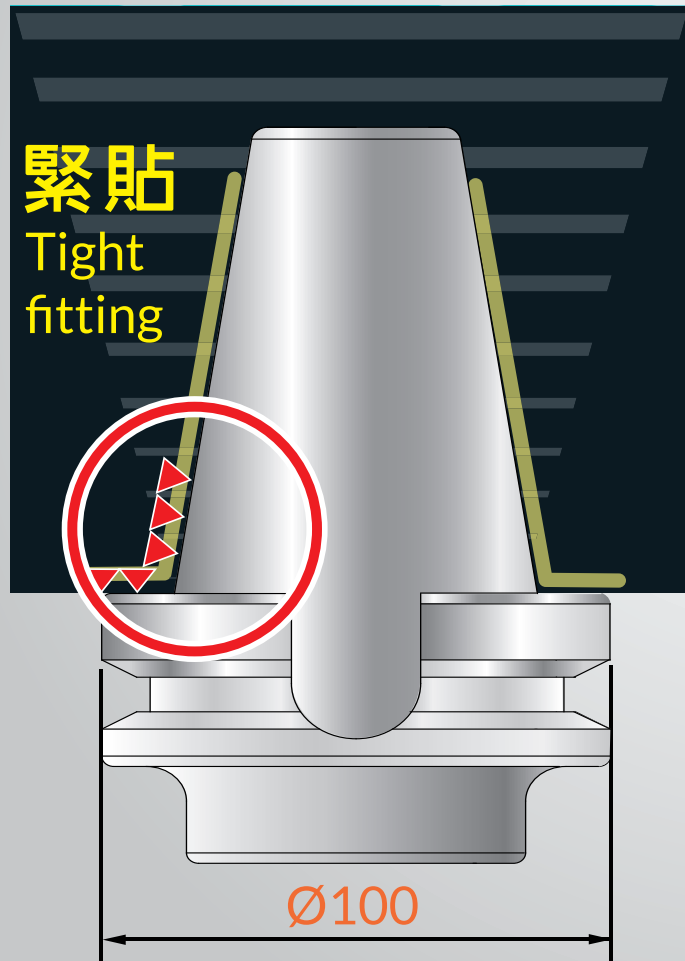
HSK

TYPE

雙面拘束

DualDRIVE+

SBT50雙面拘束刀桿
SBT50 DualDRIVE+



一般BT50刀桿
BT50 Tool Holder



PNER刀桿與其他系列刀桿比較表

PNER Collet Chuck & Other Chuck Overview

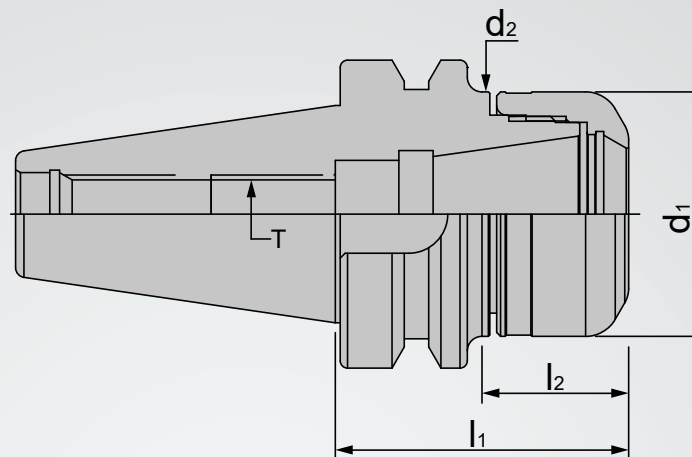
	PNER 刀桿	燒結刀桿 Shrink-fit Chuck	高速機專用刀桿 Collet Chuck	後拉刀桿 Silm-fit Collet Chuck	ER刀桿
精度 Run-Out Accuracy	++	+	+	+	-
夾持力 Clamping Force	++	○	○	○	+
剛性 Rigidity	++	++	○	○	-
筒夾選擇性 Various Types of Collet	○	無 not available	+	○	++

++ 佳 Very good + 好 Good ○ 普通 Neutral - 不好 Bad

試刀比較表

Cutting Overview

	PNER-3 μ m	ER-5 μ m
肩銑 Shoulder milling S50C S=1600 F=512 Ap=18 Ae=3 立銑刀 =10mm	 <p>0.911μm</p>	 <p>1.494μm</p>
槽銑 Grooving milling S50C S=1600 F=512 Ap=5 Ae=10 立銑刀 =10mm	 <p>0.943μm</p>	 <p>1.074μm</p>

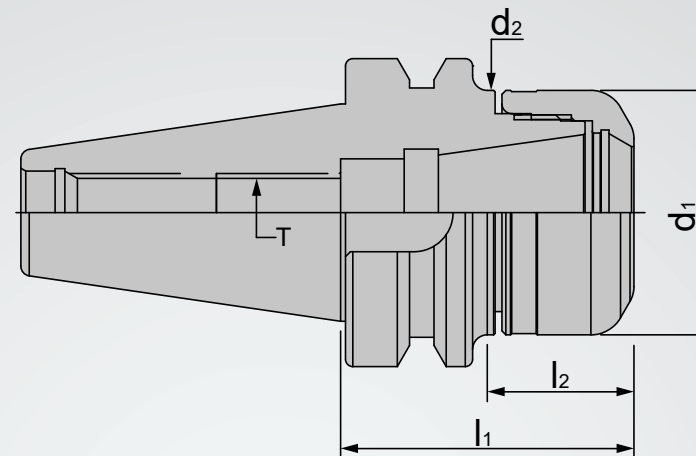


BT/PNER 立銑刀夾頭

BT/PNER COLLET CHUCK

規格 Spec.	l_1	l_2	d_1	d_2	T	夾持範圍 Clamp Range	重量 (KGS) Weight
BT30xPNER20-60	60	37	32	32	M12x1.75P	3.0~13	0.80
BT30xPNER20-100	100	77	32	32	M12x1.75P	3.0~13	0.80
BT30xPNER25-60	60	37	40	40	M16x2.0P	3.0~16	0.90
BT30xPNER25-100	100	77	40	40	M16x2.0P	3.0~16	0.90
BT30xPNER32-60	60	33	50	50	-	3.0~20	1.00
BT30xPNER32-100	100	73	50	50	M16x2.0P	3.0~20	1.00
BT40xPNER16-70	70	40	30	30	M10x1.5P	3.0~10	1.12
BT40xPNER16-100	100	70	30	30	M10x1.5P	3.0~10	1.12
BT40xPNER16-130	130	100	30	30	M10x1.5P	3.0~10	1.14
BT40xPNER16-160	160	130	30	30	M10x1.5P	3.0~10	1.14
BT40xPNER20-70	70	40	32	32	M12x1.75P	3.0~13	1.14
BT40xPNER20-100	100	70	32	32	M12x1.75P	3.0~13	1.14
BT40xPNER20-130	130	100	32	32	M12x1.75P	3.0~13	1.16
BT40xPNER20-160	160	130	32	32	M12x1.75P	3.0~13	1.16
BT40xPNER25-70	70	40	40	40	M16x2.0P	3.0~16	1.19
BT40xPNER25-100	100	70	40	40	M16x2.0P	3.0~16	1.54
BT40xPNER25-130	130	100	40	40	M16x2.0P	3.0~16	2.00
BT40xPNER25-160	160	130	40	40	M16x2.0P	3.0~16	2.00

※ DAT-PNER 可接單生產 DAT-PNER made to order.

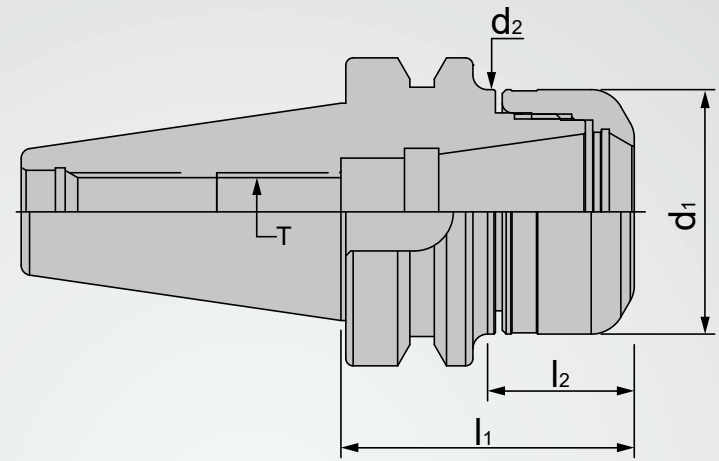


BT/PNER 立銑刀夾頭

BT/PNER COLLET CHUCK

規格 Spec.	l_1	l_2	d_1	d_2	T	夾持範圍 Clamp Range	重量 (KGS) Weight
BT40xPNER32-70	70	40	50	50	M16x2.0P	3.0~20	1.20
BT40xPNER32-100	100	70	50	50	M16x2.0P	3.0~20	1.80
BT40xPNER32-130	130	100	50	50	M16x2.0P	3.0~20	1.40
BT40xPNER32-160	160	130	50	50	M16x2.0P	3.0~20	1.40
BT50xPNER16-100	100	59	30	30	M10x1.5P	3.0~10	4.28
BT50xPNER16-130	130	82	30	30	M10x1.5P	3.0~10	4.40
BT50xPNER16-160	160	112	30	30	M10x1.5P	3.0~10	4.52
BT50xPNER20-100	100	59	32	32	M12x1.75P	3.0~13	4.42
BT50xPNER20-130	130	82	32	32	M12x1.75P	3.0~13	4.60
BT50xPNER20-160	160	112	32	32	M12x1.75P	3.0~13	4.14
BT50xPNER25-100	100	59	40	40	M16x2.0P	3.0~16	4.36
BT50xPNER25-130	130	82	40	40	M16x2.0P	3.0~16	4.64
BT50xPNER25-160	160	112	40	40	M16x2.0P	3.0~16	4.84
BT50xPNER32-100	100	61	50	50	M16x2.0P	3.0~20	5.00
BT50xPNER32-130	130	82	50	50	M16x2.0P	3.0~20	5.02
BT50xPNER32-160	160	112	50	50	M16x2.0P	3.0~20	5.40
BT50xPNER40-100	100	59	63	63	M20x2.0P	6.0~26	4.88
BT50xPNER40-130	130	82	63	63	M20x2.0P	6.0~26	5.56
BT50xPNER40-160	160	112	63	63	M20x2.0P	6.0~26	6.22

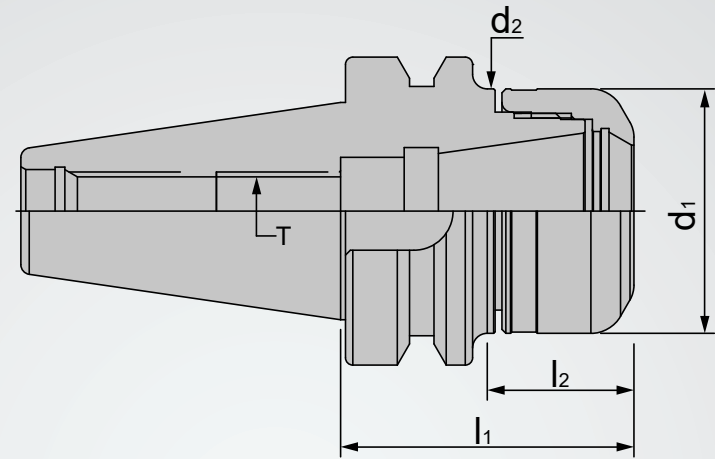
※ DAT-PNER 可接單生產 DAT-PNER made to order.



SBT/PNER 法蘭加厚型立銑刀夾頭 (雙面拘束)

DualDRIVE+ SBT/PNER COLLET CHUCK

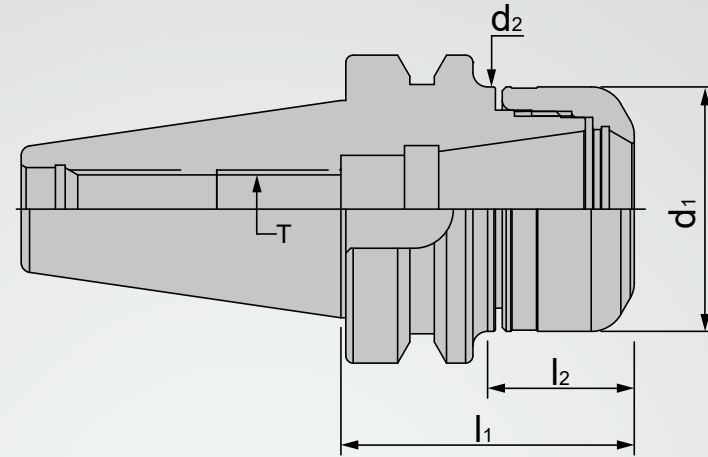
規格 Spec.	l_1	l_2	d_1	d_2	T	夾持範圍 Clamp Range	重量 (KGS) Weight
SBT30xPNER16-50	50	25	30	30	M10x1.5P	3.0~10	0.70
SBT30xPNER16-100	100	75	30	30	M10x1.5P	3.0~10	0.87
SBT30xPNER20-60	60	37	32	32	M12x1.75P	3.0~13	0.74
SBT30xPNER20-100	100	77	32	32	M12x1.75P	3.0~13	0.95
SBT30xPNER25-60	60	37	40	40	M16x2.0P	3.0~16	0.90
SBT30xPNER25-100	100	77	40	40	M16x2.0P	3.0~16	1.17
SBT30xPNER32-60	60	33	50	50	M16x2.0P	3.0~20	1.00
SBT30xPNER32-100	100	73	50	50	M16x2.0P	3.0~20	1.40
SBT40xPNER16-70	70	40	30	30	M10x1.5P	3.0~10	1.40
SBT40xPNER16-100	100	70	30	30	M10x1.5P	3.0~10	1.59
SBT40xPNER16-130	130	100	30	30	M10x1.5P	3.0~10	1.76
SBT40xPNER16-160	160	130	30	30	M10x1.5P	3.0~10	1.88
SBT40xPNER20-70	70	40	32	32	M12x1.75P	3.0~13	1.42
SBT40xPNER20-100	100	70	32	32	M12x1.75P	3.0~13	1.58
SBT40xPNER20-130	130	100	32	32	M12x1.75P	3.0~13	1.78
SBT40xPNER20-160	160	130	32	32	M12x1.75P	3.0~13	1.92



SBT/PNER 法蘭加厚型立銑刀夾頭 (雙面拘束)

DualDRIVE+ SBT/PNER COLLET CHUCK

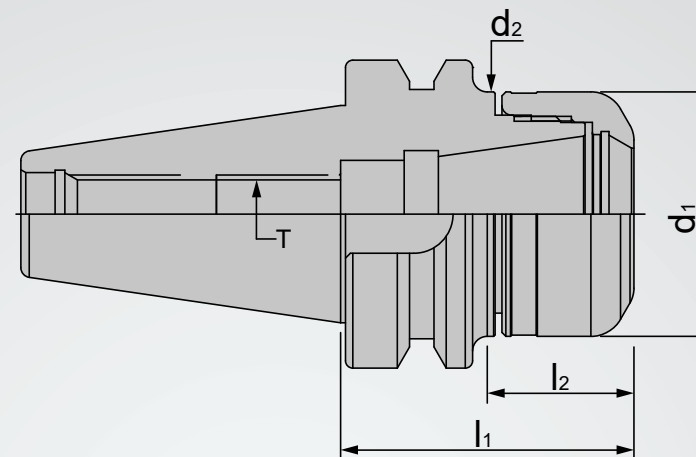
規格 Spec.	l_1	l_2	d_1	d_2	T	夾持範圍 Clamp Range	重量 (KGS) Weight
SBT40xPNER25-70	70	40	40	40	M16x2.0P	3.0~16	1.52
SBT40xPNER25-100	100	70	40	40	M16x2.0P	3.0~16	1.78
SBT40xPNER25-130	130	100	40	40	M16x2.0P	3.0~16	2.04
SBT40xPNER25-160	160	130	40	40	M16x2.0P	3.0~16	2.30
SBT40xPNER32-70	70	40	50	50	M16x2.0P	3.0~20	1.62
SBT40xPNER32-100	100	70	50	50	M16x2.0P	3.0~20	2.04
SBT40xPNER32-130	130	100	50	50	M16x2.0P	3.0~20	2.46
SBT40xPNER32-160	160	130	50	50	M16x2.0P	3.0~20	2.90
SBT40xPNER40-70	70	40	63	63	M20x2.0P	6.0~26	1.80
SBT40xPNER40-100	100	70	63	63	M20x2.0P	6.0~26	2.40



SBT/PNER 法蘭加厚型立銑刀夾頭 (雙面拘束)

DualDRIVE+ SBT/PNER COLLET CHUCK

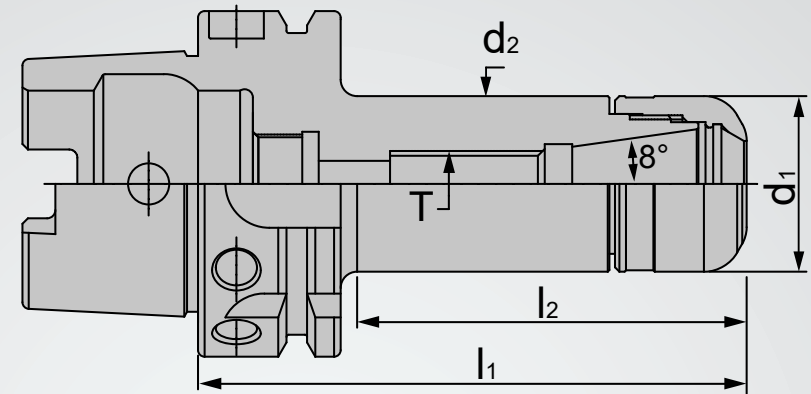
規格 Spec.	l ₁	l ₂	d ₁	d ₂	T	夾持範圍 Clamp Range	重量 (KGS) Weight
SBT50xPNER16-70	70	29	30	30	M10x1.5P	3.0~10	3.00
SBT50xPNER16-100	100	59	30	30	M10x1.5P	3.0~10	4.28
SBT50xPNER16-130	130	82	30	30	M10x1.5P	3.0~10	4.40
SBT50xPNER16-160	160	112	30	30	M10x1.5P	3.0~10	4.52
SBT50xPNER20-70	70	29	32	32	M12x1.75P	3.0~13	4.13
SBT50xPNER20-100	100	59	32	32	M12x1.75P	3.0~13	4.21
SBT50xPNER20-130	130	82	32	32	M12x1.75P	3.0~13	4.42
SBT50xPNER20-160	160	112	32	32	M12x1.75P	3.0~13	4.60
SBT50xPNER25-70	70	29	40	40	M16x2.0P	3.0~16	4.14
SBT50xPNER25-100	100	59	40	40	M16x2.0P	3.0~16	4.36
SBT50xPNER25-130	130	82	40	40	M16x2.0P	3.0~16	4.64
SBT50xPNER25-160	160	112	40	40	M16x2.0P	3.0~16	4.84



SBT/PNER 法蘭加厚型立銑刀夾頭 (雙面拘束)

DualDRIVE+ SBT/PNER COLLET CHUCK

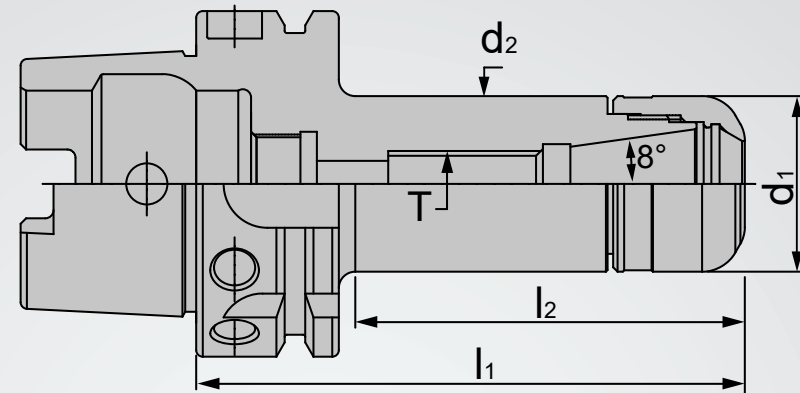
規格 Spec.	l_1	l_2	d_1	d_2	T	夾持範圍 Clamp Range	重量 (KGS) Weight
SBT50xPNER32-70	70	31	50	50	M16x2.0P	3.0~20	4.20
SBT50xPNER32-100	100	61	50	50	M16x2.0P	3.0~20	4.56
SBT50xPNER32-130	130	82	50	50	M16x2.0P	3.0~20	5.02
SBT50xPNER32-160	160	112	50	50	M16x2.0P	3.0~20	5.40
SBT50xPNER40-80	80	39	63	63	M20x2.0P	6.0~26	4.42
SBT50xPNER40-100	100	59	63	63	M20x2.0P	6.0~26	4.88
SBT50xPNER40-130	130	82	63	63	M20x2.0P	6.0~26	5.56
SBT50xPNER40-160	160	112	63	63	M20x2.0P	6.0~26	6.22



HSK/PNER 立銑刀夾頭

HSK/PNER COLLET CHUCK

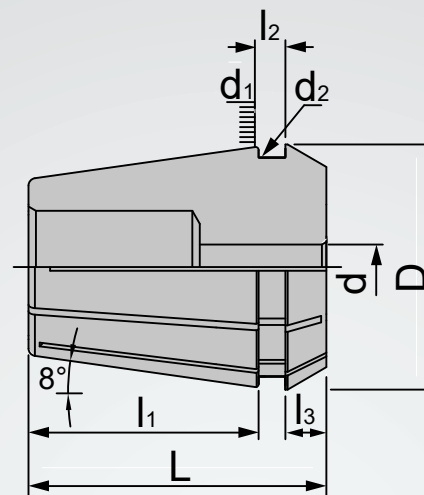
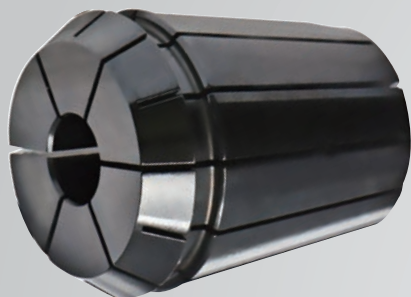
規格 Spec.	l_1	l_2	d_1	d_2	T	夾持範圍 Clamp Range	重量 (KGS) Weight
HSK32AxPNER16-50	50	29	30	26	-	3.0~10	0.14
HSK32AxPNER20-60	60	39	32	-	-	3.0~13	0.24
HSK40AxPNER16-60	60	37	30	26	-	3.0~10	0.36
HSK40AxPNER20-60	60	38	32	32	-	3.0~13	0.37
HSK40AxPNER25-60	60	38	40	-	-	3.0~16	0.47
HSK40AxPNER32-70	70	35	50	40.5	-	3.0~20	0.57
HSK50AxPNER16-60	60	31	30	26	-	3.0~10	0.54
HSK50AxPNER20-60	60	31	32	32	-	3.0~13	0.55
HSK50AxPNER25-60	60	32	40	32.5	-	3.0~16	0.65
HSK50AxPNER32-70	70	42	50	-	-	3.0~20	0.75
HSK50AxPNER40-80	80	38	63	-	-	6.0~26	0.85
HSK63AxPNER16-60	60	31	30	26	-	3.0~10	1.00
HSK63AxPNER16-100	100	64	30	26	M10x1.5P	3.0~10	1.10
HSK63AxPNER16-130	130	94	30	26	M10x1.5P	3.0~10	1.20
HSK63AxPNER16-160	160	124	30	26	M10x1.5P	3.0~10	1.30
HSK63AxPNER20-60	60	31	32	32	-	3.0~13	1.60
HSK63AxPNER20-100	100	71	32	32	M12x1.75P	3.0~13	1.70
HSK63AxPNER20-130	130	99	32	32	M12x1.75P	3.0~13	1.80
HSK63AxPNER20-160	160	129	32	32	M12x1.75P	3.0~13	1.90



HSK/PNER 立銑刀夾頭

HSK/PNER COLLET CHUCK

規格 Spec.	l_1	l_2	d_1	d_2	T	夾持範圍 Clamp Range	重量 (KGS) Weight
HSK63AxPNER25-100	100	71	40	40	M16x2.0P	3.0~16	1.80
HSK63AxPNER25-130	130	101	40	40	M16x2.0P	3.0~16	1.90
HSK63AxPNER25-160	160	131	40	40	M16x2.0P	3.0~16	2.00
HSK63AxPNER32-100	100	71	50	50	-	3.0~20	2.55
HSK63AxPNER32-130	130	101	50	50	M16x2.0P	3.0~20	2.65
HSK63AxPNER32-160	160	131	50	50	M16x2.0P	3.0~20	2.75
HSK63AxPNER40-100	100	71	63	-	M20x2.0P	6.0~26	2.65
HSK63AxPNER40-130	130	101	63	-	M20x2.0P	6.0~26	2.75
HSK63AxPNER40-160	160	131	63	-	M20x2.0P	6.0~26	2.85
HSK80AxPNER32-100	100	69	50	50	-	3.0~20	3.10
HSK80AxPNER40-120	120	91	63	63	M20x2.0P	6.0~26	3.20
HSK100AxPNER16-100	100	61	30	26	M10x1.5P	3.0~10	2.90
HSK100AxPNER20-100	100	61	32	32	M12x1.75P	3.0~13	3.00
HSK100AxPNER25-100	100	61	40	40	M16x2.0P	3.0~16	3.10
HSK100AxPNER32-100	100	61	50	50	-	3.0~20	3.20
HSK100AxPNER40-100	100	61	63	63	-	6.0~26	3.30



PN 筒夾 PN COLLET

規格 Spec.	L	l ₁	l ₂	l ₃	D	d ₁	d ₂	夾持範圍 Size Range	重量 (KGS) Weight
PN16	27.5	20.8	3.4	4	16.8	16	13.8	3.0~10	0.03
PN20	31.5	23.9	3.4	4.8	20.8	20	17.4	3.0~13	0.04
PN25	34	25.9	3.6	5	25.8	25	21.9	3.0~16	0.06
PN32	40	30.9	4.1	5.5	32.7	32	29.2	3.0~20	0.10
PN40	46	34.5	4.5	7	40.85	40	36.2	6.0~26	0.25

PN16

規格 Spec.	夾持範圍 Size Range
PN16-03	3
PN16-04	4
PN16-05	5
PN16-06	6
PN16-07	7
PN16-08	8
PN16-09	9
PN16-10	10

PN20

規格 Spec.	夾持範圍 Size Range
PN20-03	3
PN20-04	4
PN20-05	5
PN20-06	6
PN20-07	7
PN20-08	8

規格 Spec.	夾持範圍 Size Range
PN20-09	9
PN20-10	10
PN20-11	11
PN20-12	12
PN20-13	13

PN25

規格 Spec.	夾持範圍 Size Range
PN25-03	3
PN25-04	4
PN25-05	5
PN25-06	6
PN25-07	7
PN25-08	8
PN25-09	9
PN25-10	10
PN25-11	11
PN25-12	12
PN25-13	13
PN25-14	14
PN25-15	15
PN25-16	16

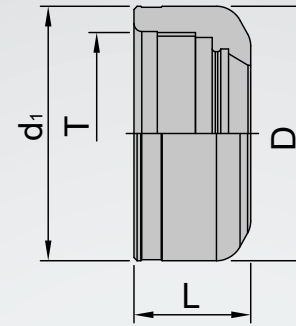
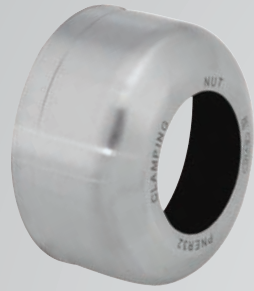
PN32

規格 Spec.	夾持範圍 Size Range
PN32-03	3
PN32-04	4
PN32-05	5
PN32-06	6
PN32-07	7
PN32-08	8
PN32-09	9
PN32-10	10
PN32-11	11
PN32-12	12
PN32-13	13
PN32-14	14
PN32-15	15
PN32-16	16
PN32-17	17
PN32-18	18
PN32-19	19
PN32-20	20

PN40

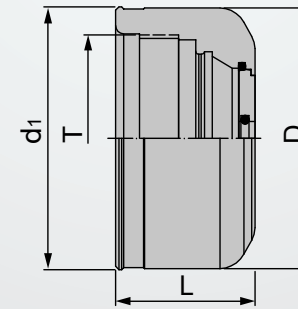
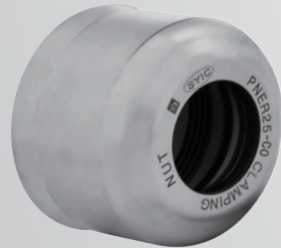
規格 Spec.	夾持範圍 Size Range
PN40-06	6
PN40-07	7
PN40-08	8
PN40-09	9
PN40-10	10
PN40-11	11
PN40-12	12
PN40-13	13
PN40-14	14
PN40-15	15
PN40-16	16
PN40-17	17
PN40-18	18
PN40-19	19
PN40-20	20

規格 Spec.	夾持範圍 Size Range
PN40-21	21
PN40-22	22
PN40-23	23
PN40-24	24
PN40-25	25
PN40-26	26



PNER 螺帽 PNER CAMPING NUT

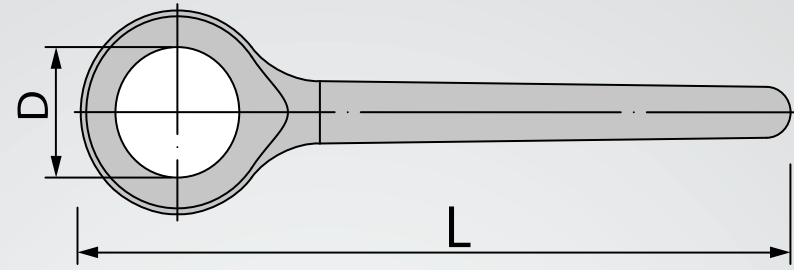
規格 Spec.	L	D	d ₁	T	重量 (KGS) Weight
PNER16-NUT	23	30	30.5	M22x1.5P	0.03
PNER20-NUT	24	32	32.5	M25x1.5P	0.04
PNER25-NUT	24	40	40.5	M32x1.5P	0.06
PNER32-NUT	27	50	50.5	M40x1.5P	0.10
PNER40-NUT	30	63	63.5	M50x1.5P	0.25



PNER 止水螺帽 PNER SEALED NUT

規格 Spec.	L	D	d ₁	T	重量 (KGS) Weight
PNER16-CO	27	30	30.5	M22x1.5P	0.08
PNER20-CO	29	32	32.5	M25x1.5P	0.08
PNER25-CO	29	40	40.5	M32x1.5P	0.14
PNER32-CO	32	50	50.5	M40x1.5P	0.22
PNER40-CO	35	63	63.5	M50x1.5P	0.40

※ 需搭配止水墊片使用 Should be used with Coolant rings.



軸承扳手 SPANNER

規格 Spec.	適用規格 Applicable Spec.	L	D	重量 (KGS) Weight
PNER16-RDQ	ER16W-RDQ,SKS10W-RDQ,UTER16,SKX10-CO	170	30	-
PNER20-RDQ	PNER20	195	32	0.44
PNER25-RDQ	PNER25,SKS16,SK316,SKX16-CO	175	40	0.66
PNER32-RDQ	PNER32,ER32W-RDQ	235	50	-
PNER40-RDQ	PNER40,PRO32	250	63	1.14

※ 適用於無風阻螺帽 Applicable non wind resistance nut.



正河源股份有限公司
CHAIN HEADWAY CO.,LTD.

☎ TEL : +886-4-26265252

☎ FAX : +886-4-26267941

📍 地址 : 台灣台中市清水區五權路232號
No. 232, Wuquan Rd., Qingshui Dist., Taichung City 436, Taiwan

🌐 網址 : www.chain-headway.com



Website(中文)



Website(EN)



LINE



Whatsapp



Wechat



Facebook



YouTube

公司聯絡資訊請貼於此處
Company Information Please Paste here

其他服務據點訊息請透過官網查詢
Other Sales Region Please Review Our Website