



# 夾治具系統

Clamping Systems





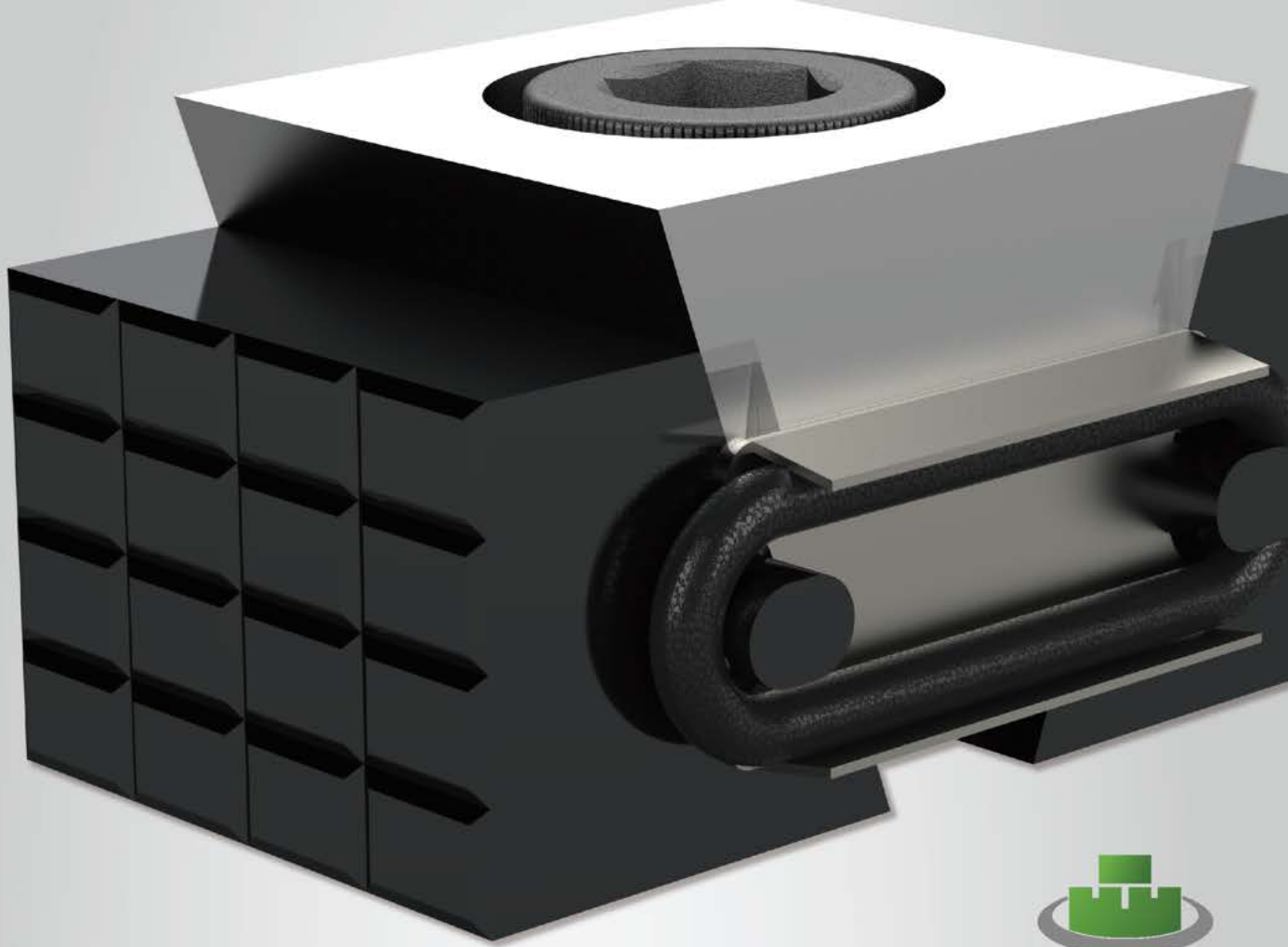
## 正河源夾治具事業部

台灣正河源機械配件一直致力於提升國內外機械加工工藝水平，在搭配機台主軸刀柄部分已有很大的發展，而在陳正雄總經理的帶領下提出了三大領域「切削系統」、「夾治具系統」、「自動化系統」，這是未來十年重要計畫所要經營的方向。

在這幾年投資許多製造刀片的機台設備，並與德日技術合作的方式下，切削系統獲得很大的進展。眼見邁向下一步的時機已到來，今年下半年成立夾治具事業部，整合現有夾具治資源及與歐洲配合零點定位系統，可將夾治具與機台床台做為快速更換的連接，提升機台稼動率，更是邁向自動化的前哨戰。

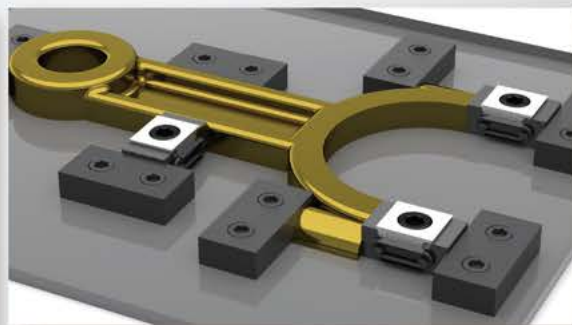
結合切削系統及夾治具系統幫客戶量身打造，提升加工效能，強化產業競爭力，也是正河源一直秉持的企業核心。



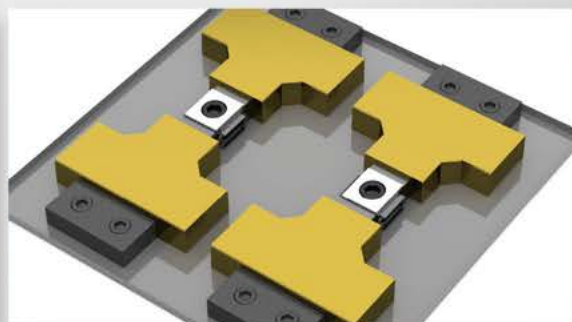
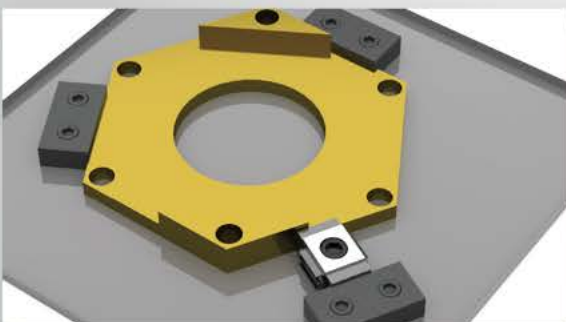


## 您還在為千變萬化的工件夾持方式而困擾嗎？

正河源的OKV 迷你型虎鉗可讓您快速更換工件及設置，可靈活運用因應不同變化設計需求。OKV 迷你型虎鉗適用於不同工作平台如三軸、四軸、五軸及臥式皆可使用。



電子目錄



同動求心虎鉗

Self Center



迷你虎鉗

OKV

雙夾型虎鉗

Double-Clamping



一般型虎鉗

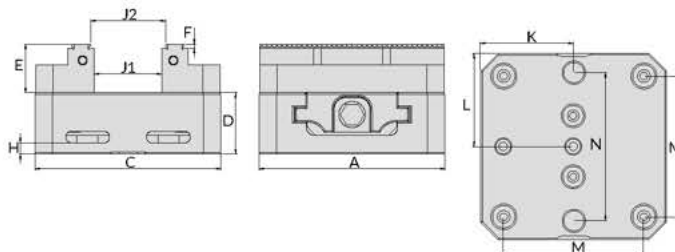
General



## LM-VE-SC 同動求心虎鉗

LM-VE-SC SELF CENTRING VISE

**NEW**



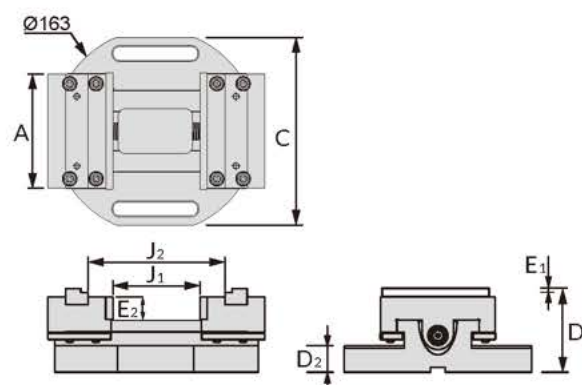
本體材質:合金鋼 Using alloy steel

規格 Spec.	A	C	D	E	F	H	J <sub>1</sub>	J <sub>2</sub>	K	L	M	N	夾持力 Power	重量 (KGS) Weight
LM-VE-127SC	127	127	42	33	3	7.62	0-46	0-51	63.5	63.5	96	101	15KN	5.5
LM-VE-153SC	127	153	42	33	3	7.62	0-72.5	0-79	76.5	63.5	96	101	15KN	6.7
LM-VE-210SC	127	210	42	33	3	7.62	0-122	0-127	101.5	63.5	96	101	18KN	8.7



## LM-VE-90SC 同動求心虎鉗

LM-VE-90SC SELF CENTRING VISE



本體材質:合金鋼 Using alloy steel

規格 Spec.	A	C	D <sub>1</sub>	D <sub>2</sub>	E <sub>1</sub>	E <sub>2</sub>	J <sub>1</sub>	J <sub>2</sub>	夾持力 Power	重量 (KGS) Weight
LM-VE-90SC	90	151	60	17	5	18	0-60	40-100	15KN	4.00

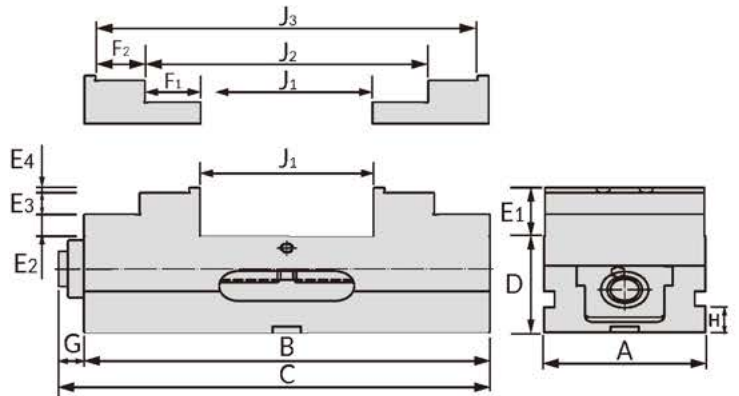






## LM-VE-SC 同動求心虎鉗

### LM-VE-SC SELF CENTRING VISE



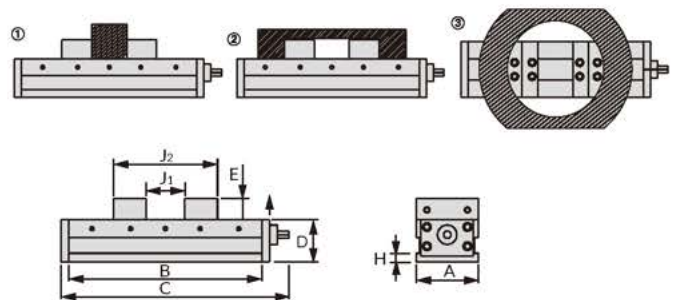
本體材質:球墨鑄鐵 Using FDC60

規格 Spec.	A	B	C	D	E1	E2	E3	E4	F1	F2	G	H	J1	J2	J3	夾持力 Power	重量 (KGS) Weight
LM-VE-60SC	60	120	143	60	25	12.5	12.5	-	17.5	-	23	18	0-50	38-85	-	15KN	6.00
LM-VE-100SC	101	240	260	80	40	18	18	4	35	31	20	22	0-90	70-160	134-222	15KN	16.0
LM-VE-160SC	160	370	440	105	55	27.5	27.5	-	42.5	-	70	22	0-200	86-285	-	18KN	47.0

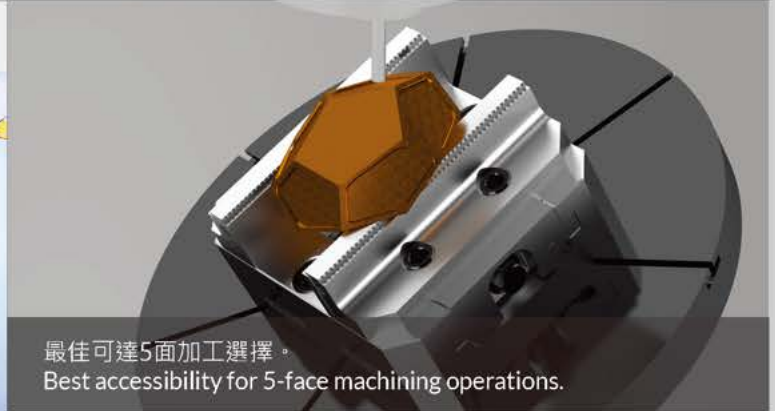
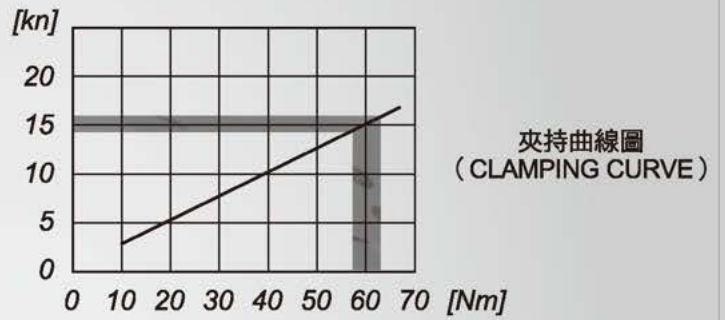
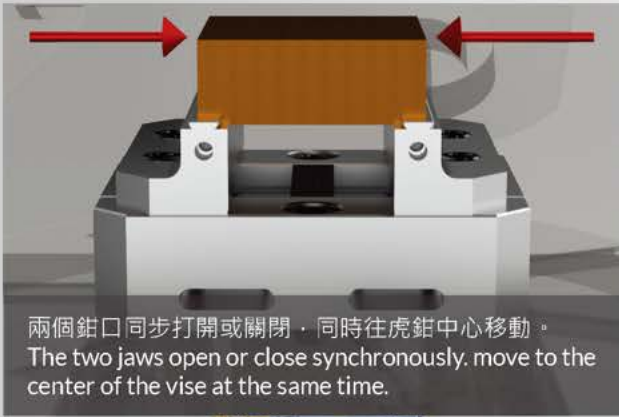


## LM-VE-DCS 角固式雙向求心機械虎鉗

### LM-VE-DCS MECHANICAL-TYPE DOUBLE SELF-CENTERING VISE



規格 Spec.	A	B	C	D	E	H	J1	J2	重量 (KGS) Weight
LM-VE-100DCS	101	310	410	95	40	23	60~170	220~305	30.0
LM-VE-130DCS	130	410	510	100	50	23	60~250	220~405	40.0
LM-VE-160DCS	160	490	590	110	55	23	60~320	230~485	60.0
LM-VE-200DCS	200	565	665	120	60	23	60~365	260~560	100.0



## 特點

## Features

同動式求心虎鉗適用於三、四、五軸、CNC分度盤及臥式銑床精密加工  
Self Centring Precision Vise is suitable for 3、4、5 axis、CNC Rotary Table and Horizontal machining.

虎鉗中心重覆定位精度可保持 $\pm 0.01\text{mm}$ ，極其扁平的設計，為了最大限度地利利用機台空間。  
Vise precision of its center repetition position is  $\pm 0.01\text{mm}$ , extremely flat design, for maximum utilization of the machine room.

虎鉗滑軌經高週波熱處理HRC45°以上，可保持高耐磨性。  
Slideway has high frequency heat treatment at HRC45° or more to keep the accuracy and its long use life.

虎鉗鉗口採用全鋼材質，經熱處理硬度達HRC55°以上，可拆換方向使用，變化性與互換性極佳。  
Vise hard jaw material is full Steel and heat treatment at HRC55° or more. Owing to its good design to use both sides of jaw since it is exchangeable.

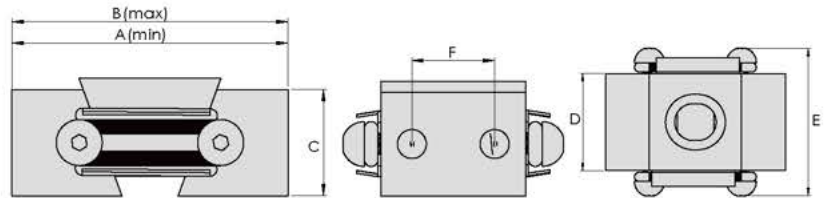
虎鉗特殊的結構設計，夾持工件時所產生的下壓力能有效防止工件上浮情形，鎖固力極佳。  
Special design for the Self Centring Precision Vise to prevent work piece from bending during clamping and machining. Thus, it has the best solution in clamping the work piece.



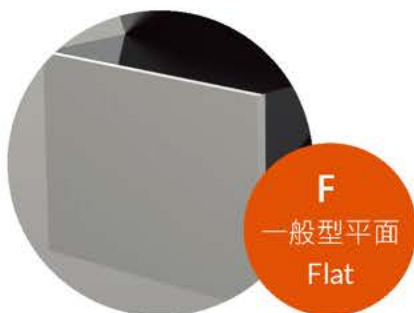
# LM-OKV- 迷你型虎鉗

## LM-OKV\_MINI VISE

**NEW**

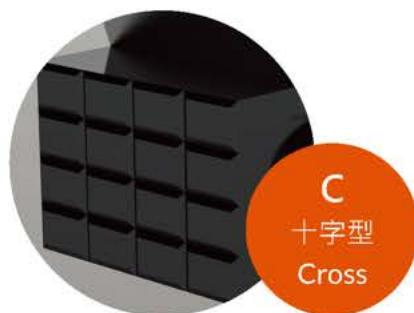


規格 Spec.	形式 Type	行程 Stroke	AB 尺寸範圍 AB Size Range	C	D	E	F	重量 (KGS) Weight
LM-OKV-2425F	一般型平面	1mm	24.5-25.5mm	11	15	21.5	-	-
LM-OKV-3742F		5mm	37-42mm	15	21	32	-	-
LM-OKV-4751F		4mm	47-51mm	22	30	37	-	-
LM-OKV-2425C	十字型	1mm	24.5-25.5mm	11	15	21.5	-	-
LM-OKV-3742C		5mm	37-42mm	15	21	32	-	-
LM-OKV-4751C		4mm	47-51mm	22	30	37	-	-
LM-OKV-3742H	孔型	5mm	37-42mm	15	21	32	12(M5)	-
LM-OKV-4751H		4mm	47-51mm	22	30	37	18(M5)	-



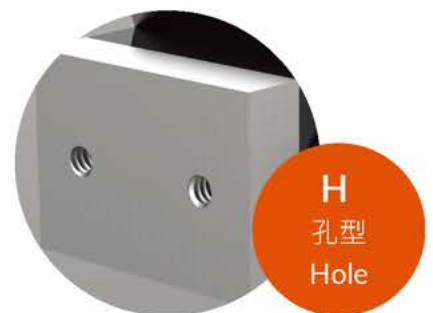
**F**  
一般型平面  
Flat

當工件為光滑平面時，使用平面鉗口。  
Plane jaws are used when the workpiece is a smooth plane.



**C**  
十字型  
Cross

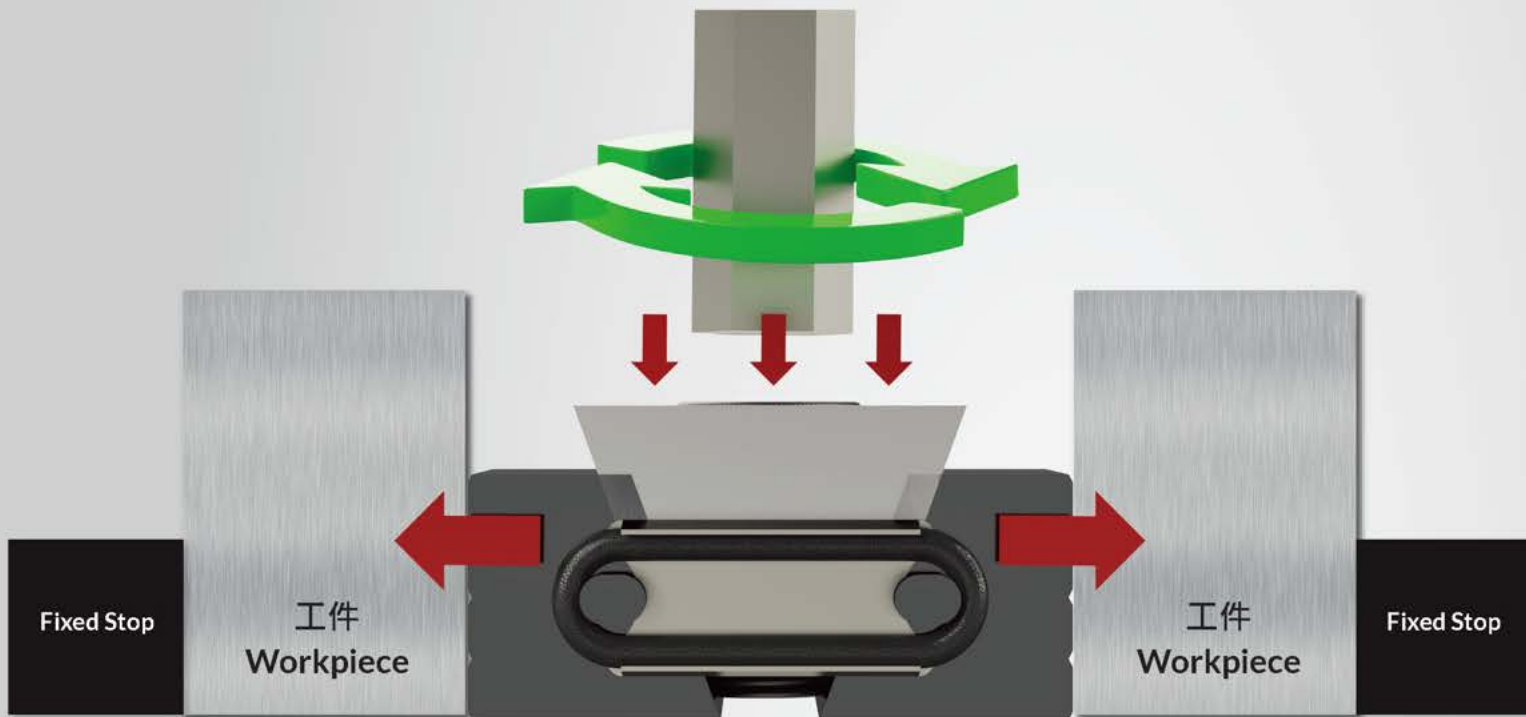
十字型產生高摩擦力，確保在任何情況下都能可靠夾緊。  
Cross type creates high friction, which ensures reliable clamping in any circumstances.



**H**  
孔型  
Hole

側面附有內螺紋，使其可以快速方便地使用各種附加零件。  
Internal threads are attached to the sides, making it quick and easy to use various additional pieces.





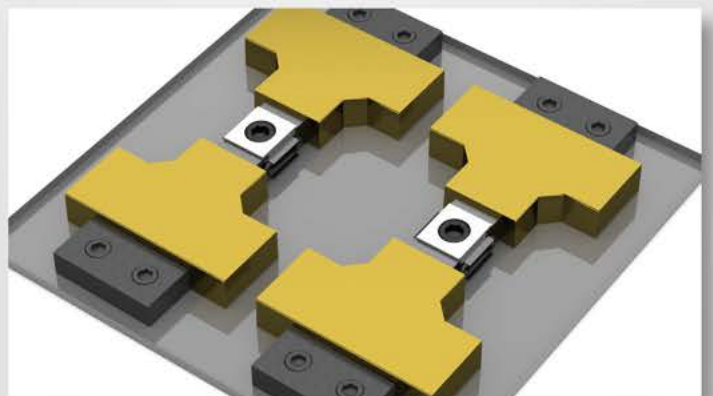
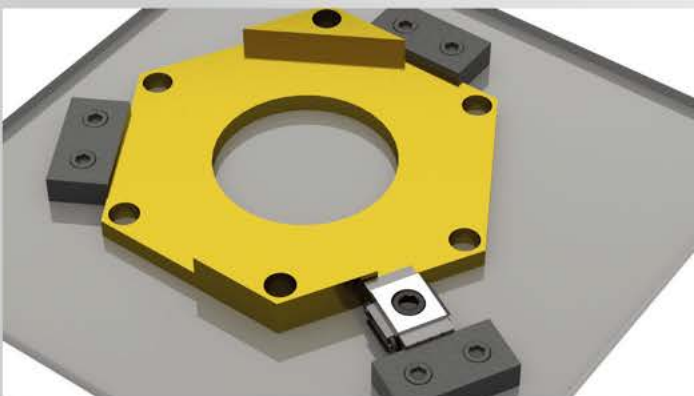
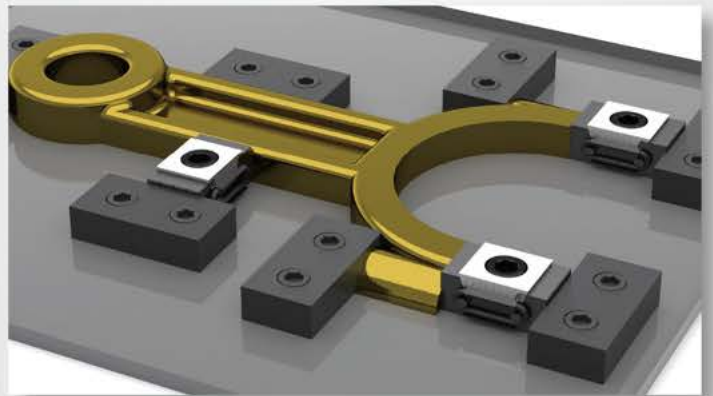
**特點**

運用六角板手輕鬆鎖固之設計結構。  
 Designed with a hexagonal wrench for easy locking.

**Features**

迷你型虎鉗更換工件及設置快速的特點，可靈活運用因應不同變化設計需求。  
 LM-OKV to replace the workpiece and set the fast features, can flexibly use the design requirements to adapt to different changes.

適用於不同工作平台 (三軸、四軸、五軸及臥式皆可使用)。  
 Suitable for different working platforms (three-axis, four-axis, five-axis and horizontal).

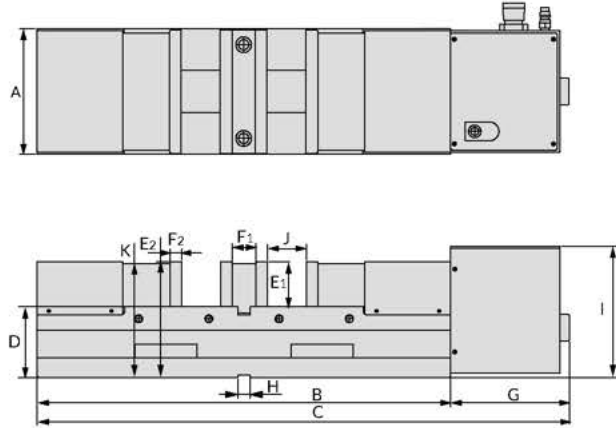




# LM-VE-  JD 空壓雙夾緊虎鉗

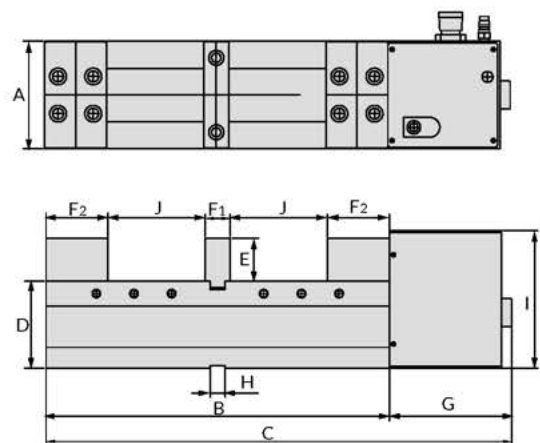
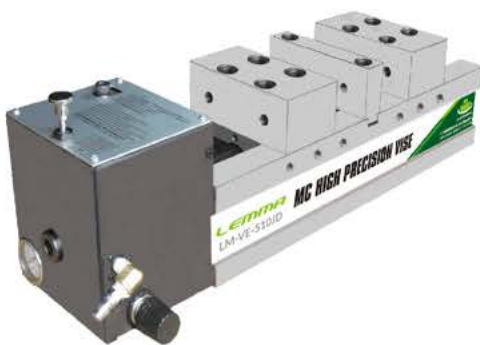
## LM-VE-  JD SUPER HI-PRESSURE DOUBLE VISE

**NEW**



規格 Spec.	A	B	C	D	E <sub>1</sub>	E <sub>2</sub>	F <sub>1</sub>	F <sub>2</sub>	G	H	I	J	K	夾持力 Power	重量 (KGS) Weight
LM-VE-530JD	160	530	682	90	58	3	30	15	152	18	168	0-100	145	4000kgf	66.0

**NEW**



規格 Spec.	A	B	C	D	E	F <sub>1</sub>	F <sub>2</sub>	G	H	I	J	夾持力 Power	重量 (KGS) Weight
LM-VE-410JD	130	410	556	105	52	30	74	146	18	166	0-115	3200kgf	44.0
LM-VE-510JD	160	510	656	105	55	30	82	146	18	168	0-115	4000kgf	69.0





## 自動化量產

由於空壓技術及雙夾緊特性，使虎鉗非常適合自動化批量生產。

The air pressure technology and double clamping characteristics make the vise very suitable for automated mass production.

## 特點

## Features

空壓源8kg/cm<sup>2</sup>之低壓源，即可達4000kgf之超高挾持力，而挾持力從0-4000kgf可藉由調壓器自由調整設定，適合銅鋁類產品輕加工或鑄鐵類初胚重切削。

Only need 8kg/cm<sup>2</sup> of low air pressure source can reach the super high gripping force of 4000kgf. The gripping force can be adjusted within 0-4000kgf by the pressure regulator. Suitable for light processing of copper and aluminum products or heavy duty cutting of cast iron.

當不慎操作失去空壓源時，安全保壓設計不會失壓且有自動補壓及穩壓之功能，挾持力永不鬆脫以確保挾持工件之功能，需再將空壓源送入方可打開。

When the air pressure source is inadvertently operated, the safety pressure maintaining design will not lose pressure and has the function of automatic voltage compensation and voltage regulation. The clamping force will never be loose to ensure the function of holding the workpiece, and the air pressure source needs to be sent again. The party can be opened.

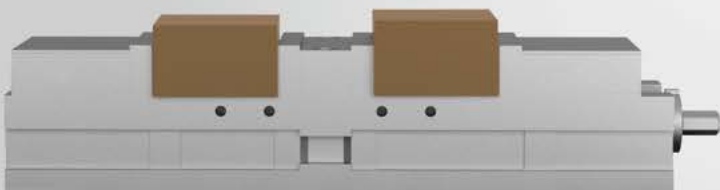
虎鉗本體材質使用石墨鑄鐵(FCD-60)，滑軌經高週波熱處理HRC45°以上，可保持高耐磨性。

The body of the Vise using high quality graphite casting iron (FCD-60). Slideway has high frequency heat treatment at HRC45° or more to keep the accuracy and its long use life.

內藏下壓結構可產生下鎖之力，可消除虎口板上浮和工作傾斜。

(一般由上方螺絲鎖住滑動塊虎鉗，沒有下壓力量)

The built-in pressing structure can generate a locking force, which can eliminate the floating of vise jaw and operational slope. (The sliding block vise is locked by the upper screw, there is no downforce).



## 雙夾機構

挾持安全距離可達5mm，按下開關後，雙夾機構同時挾持兩個大小誤差5mm以內之工件。

⚠️ 注意事項：不可單邊夾持。

The clamping safety distance can reach 5mm. After pressing the switch, the double clamping mechanism simultaneously holds two workpieces with a size error of less than 5mm.

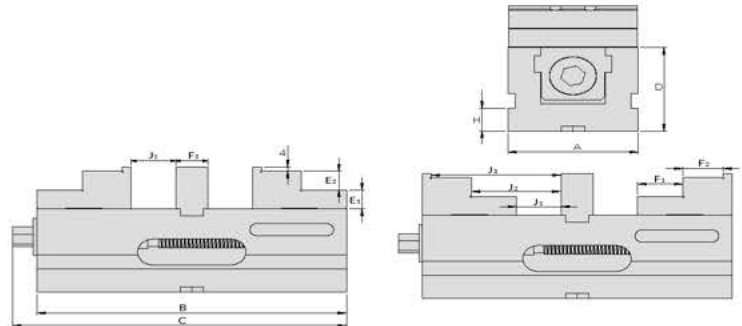
Note: Can not be unilaterally clamped.



## LM-VE-SD 精巧雙夾緊虎鉗

LM-VE-SD DOUBLE-CLAMPING PRECISION VISE

**NEW**

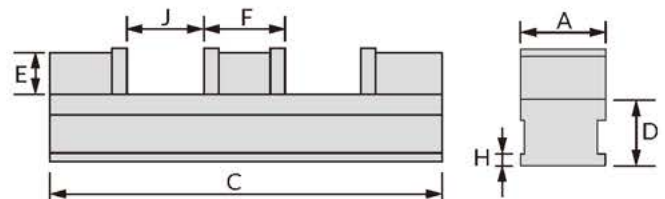


規格 Spec.	A	B	C	D	E <sub>1</sub>	E <sub>2</sub>	F <sub>1</sub>	F <sub>2</sub>	F <sub>3</sub>	G <sub>1</sub>	G <sub>2</sub>	H	J <sub>1</sub>	J <sub>2</sub>	J <sub>3</sub>	重量 (KGS) Weight
LM-VE-100SD	100	240	260	80	18	18	35	31	25	18	18	22	0-35	35-70	66-100	18.0



## LM-VE-D 雙夾緊虎鉗

LM-VE-D DOUBLE-CLAMPING PRECISION VISE



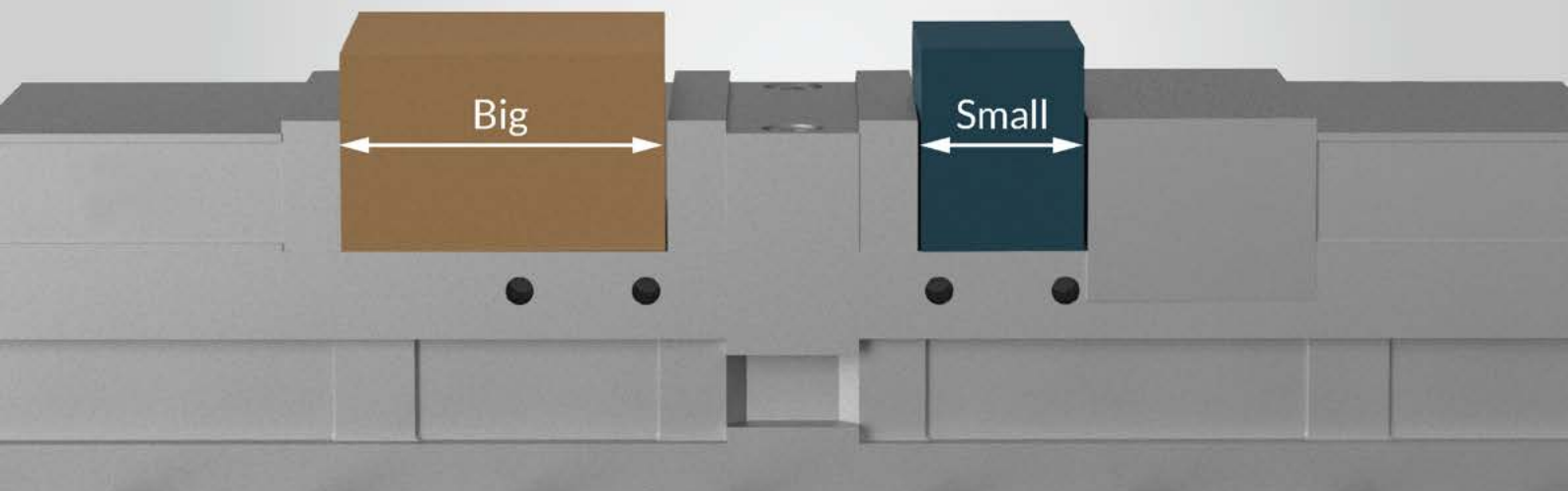
規格 Spec.	A	C	D	E	F	H	J	重量 (KGS) Weight
LM-VE-100D	100	400	65	40	60	23	0-55	25.0
LM-VE-160D	160	500	85	60	66	23	0-75	50.0



## 雙夾機構

使用快速雙夾機構，可以同時夾緊兩邊工件，夾持工件尺寸沒有限制，亦可單邊夾持。

With the fast double clamp mechanism, both workpieces can be clamped at the same time. There is no limit to the size of the clamping workpiece, and it can be clamped on one side.



### 特點

### Features

中間固定塊取出，可靈活運用夾持較大工件。

The intermediate fixing block is taken out, and the large workpiece can be clamped flexibly.

特殊角固結構設計使夾持工件能產生下壓力，有效防止工件上浮，鎖固力極佳。

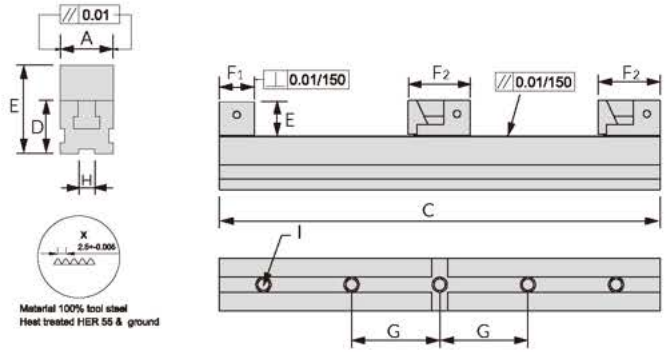
Clamping the workpiece can generate downforce, effectively preventing the workpiece from floating, and the locking force is excellent.

虎鉗本體材質使用石墨鑄鐵(FCD-60)，滑軌經高週波熱處理HRC45°以上，可保持高耐磨性。

The body of the Vise using high quality graphite casting iron (FCD-60). Slideway has high frequency heat treatment at HRC45° or more to keep the accuracy and its long use life.



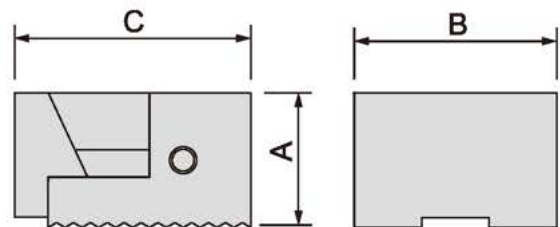
## LM-FR 彈性並列式虎鉗 LM-FR FLEXIBLE PARALLEL VISE



規格 Spec.	A	C	D	E	F1	F2	G	H	I	A 型壓塊 A-Type Briquetting	B 型壓塊 B-Type Briquetting	重量 (KGS) Weight
LM-FR-6025	60	250	60	40	60	70	100	18	M12	LM-FR-60A (2 pcs)	LM-FR-60B (1 pcs)	9.00
LM-FR-6040	60	400	60	40	60	70	100	18	M12	LM-FR-60A (3 pcs)	LM-FR-60B (1 pcs)	14.0
LM-FR-6050	60	500	60	40	60	70	100	18	M12	LM-FR-60A (4 pcs)	LM-FR-60B (1 pcs)	16.0
LM-FR-6063	60	630	60	40	60	70	100	18	M12	LM-FR-60A (4 pcs)	LM-FR-60B (1 pcs)	20.0
LM-FR-9025	90	250	70	45	70	80	100	18	M16	LM-FR-90A (2 pcs)	LM-FR-90B (1 pcs)	18.0
LM-FR-9040	90	400	70	45	70	80	100	18	M16	LM-FR-90A (3 pcs)	LM-FR-90B (1 pcs)	25.0
LM-FR-9050	90	500	70	45	70	80	100	18	M16	LM-FR-90A (4 pcs)	LM-FR-90B (1 pcs)	29.0
LM-FR-9063	90	630	70	45	70	80	100	18	M16	LM-FR-90A (4 pcs)	LM-FR-90B (1 pcs)	38.0



## LM-FR-\_A 多夾式虎鉗壓塊 LM-FR-\_A MULTI-FOLDER VISE BRIQUETTING



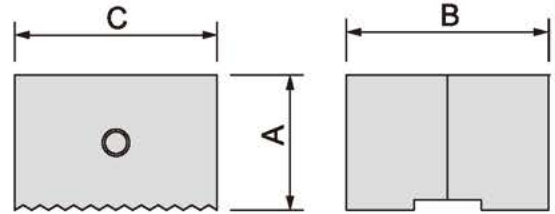
規格 Spec.	A	B	C	重量 (KGS) Weight
LM-FR-60A	40	60	70	1.40
LM-FR-90A	45	90	80	2.90





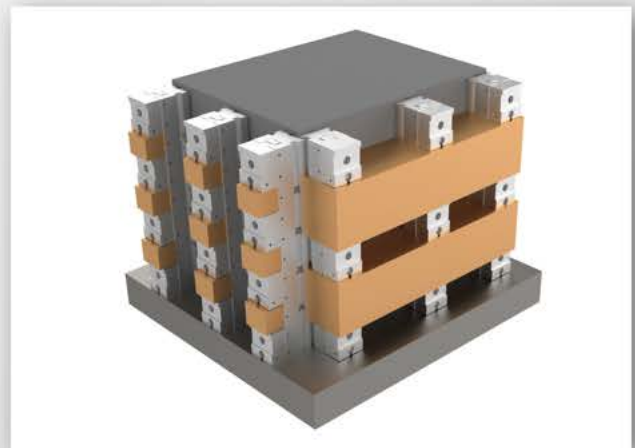
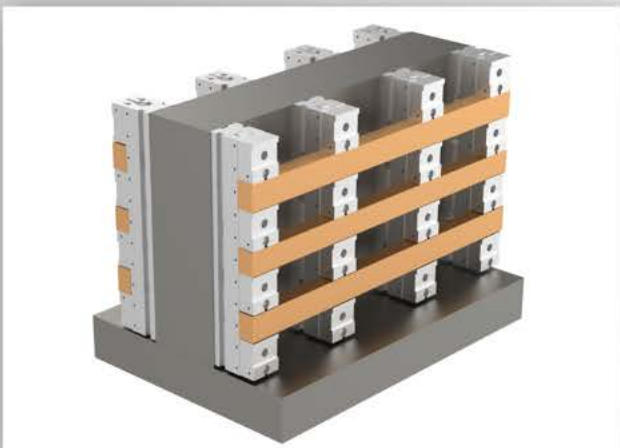
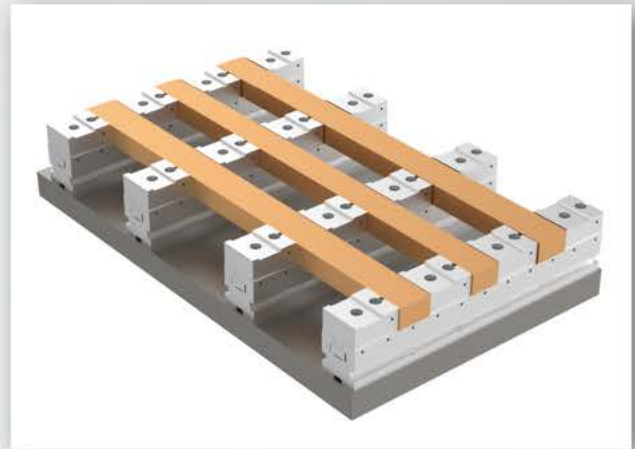
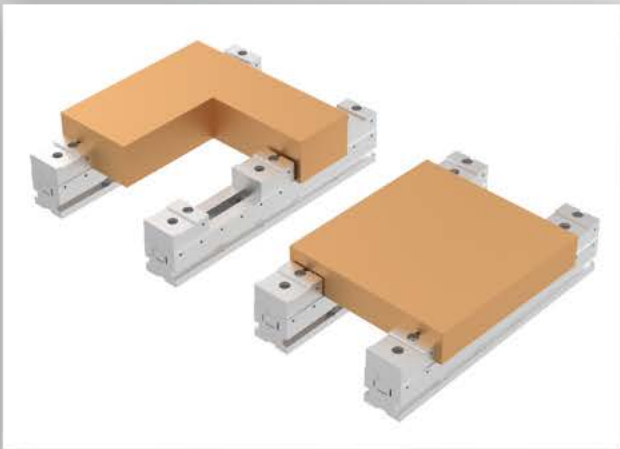
# LM-FR-\_B 多夾式虎鉗固定塊

## LM-FR-\_B MULTI-FOLDER VISE FIXED BLOCK



規格 Spec.	A	B	C	重量 (KGS) Weight
LM-FR-60B	40	60	60	1.40
LM-FR-90B	45	90	70	2.90

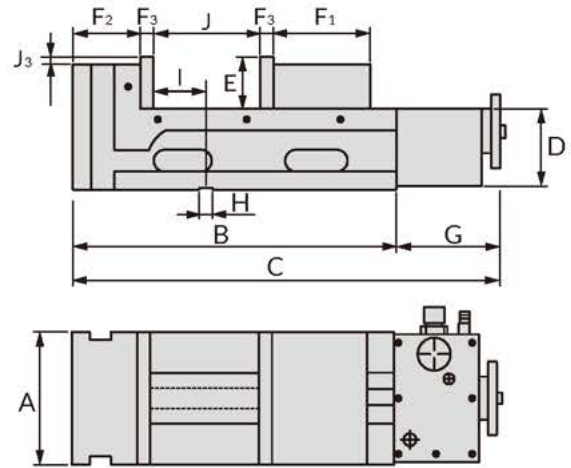
### 加工應用 Cutting Application



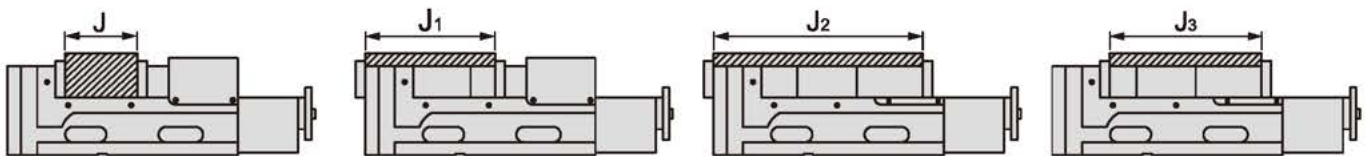
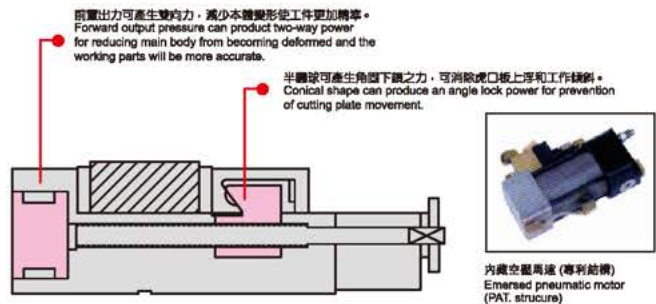
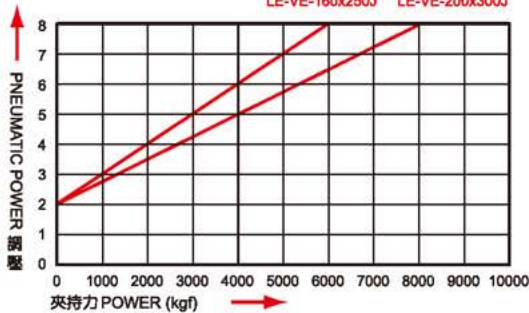


# LM-VE-  J 空壓快速精密虎鉗

## LM-VE-  J PNEUMATIC MC PRECISION&ANGLE LOCK VISE



LE-VE-130x150J LE-VE-180x200J  
LE-VE-160x160J LE-VE-200x200J  
LE-VE-160x250J LE-VE-200x300J



### 特點 Feature

- 空壓源 8kg/cm<sup>2</sup> 之低壓源，即可達 9000kgf 之超高夾持力，而夾持力從 0-9000kgf 可藉由調壓器自由調整設定
- 開關速度只需 1.5 秒，夾持安全距離可達 8mm，並可設有手輪安全線，可輕易由肉眼辨識出工件夾持之安全距離，是否超限
- 定寸規格，本體六面磨光並預留壓板槽，不須治具板，即可直立加工

- Even the air source at low pressure 8kg/cm<sup>2</sup> which can be achieved super hi-gripping force can be adjusted freely by pressure regulator.
- The shifting speed is only 1.5 sec. with safety range:8mm, also equipped with safety line on hand wheel and can be visible the clamped work piece safety range is exceeded or not.
- Six faces of vise body be super grinding & pre-setting hold slot, and can be processed vertically without jig fixture.

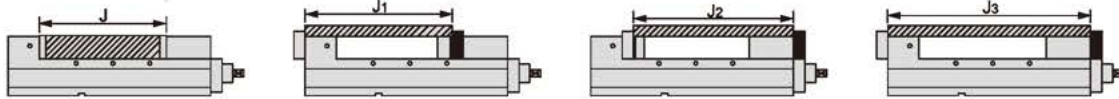
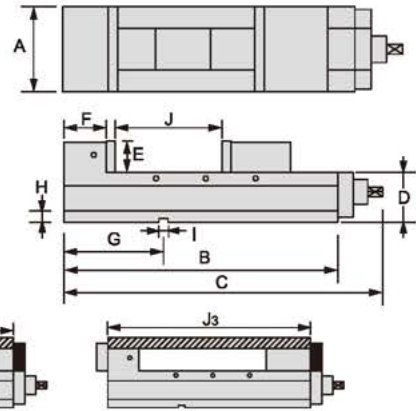
規格 Spec.	A	B	C	D	E	F <sub>1</sub>	F <sub>2</sub>	F <sub>3</sub>	G	H	I	J	J <sub>1</sub>	J <sub>2</sub>	J <sub>3</sub>	夾持力 Power	重量 (KGS) Weight
LM-VE-100-100J	100	320	435	100	48	100	85	15	125	16	45	0-100	95-220	100-200	200-300	3200kgf	29.0
LM-VE-130x150J	130	380	505	105	55	110	85	15	125	18	45	0-150	95-250	110-275	200-380	6000kgf	40.0
LM-VE-160x160J	160	400	525	105	58	120	85	15	125	18	45	0-160	95-260	120-295	210-400	6000kgf	50.0
LM-VE-160x250J	160	490	615	105	58	120	85	15	125	18	45	0-250	95-350	120-395	210-490	6000kgf	55.0
LM-VE-180x200J	180	460	585	110	63	130	90	18	125	18	72	0-200	100-300	130-350	220-460	9000kgf	72.0
LM-VE-200x200J	200	470	595	110	63	140	90	18	125	18	72	0-200	100-310	140-360	230-470	9000kgf	80.0
LM-VE-200x300J	200	570	695	110	63	140	90	18	125	18	72	0-300	100-410	140-460	230-570	9000kgf	90.0





## CHW-\_B 機械式精密虎鉗

### CHW-\_B MECHANICAL -TYPE PRECISION VISE



#### 特點 Feature

- 附防止所夾持工件上浮的角固裝置
- 無增壓機構·適用於較軟的工件夾持

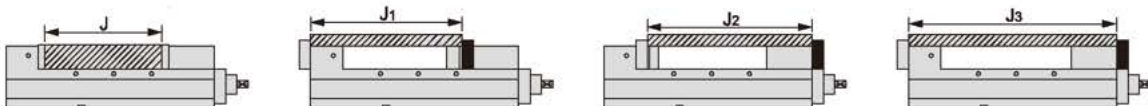
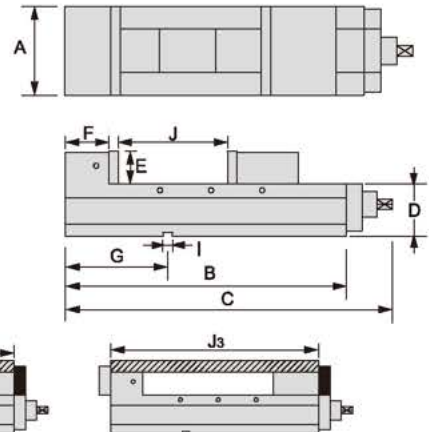
- The unit had prevent lifting structure.
- Not turbo-charged organization, is suitable for the soft work piece clamp.

規格 Spec.	A	B	C	D	E	F	G	H	I	J	J <sub>1</sub>	J <sub>2</sub>	J <sub>3</sub>	重量 (KGS) Weight
CHW-100B	100	400	490	85	45	80	110	23	18	200	230	260	340	30.0
CHW-130B	130	450	540	95	50	85	135	23	18	240	285	320	405	43.0
CHW-160B	160	550	640	100	60	103	200	23	18	300	380	400	500	61.0
CHW-200B	200	600	690	110	65	108	220	23	18	340	438	470	578	84.0



## LM-VE-\_B 機械式虎鉗

### LM-FR-\_B MECHANICAL POWER VISE



#### 特點 Feature

- 高剛性結構
- 角固機械式虎鉗適合中、輕切削做精密加工
- 虎鉗本台使用高抗張力球狀石墨鑄鐵·抗張力強·不易變形

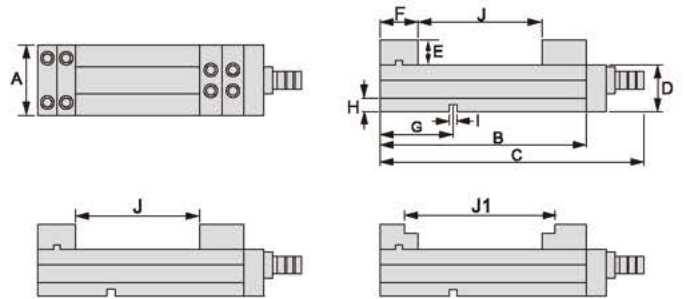
- Mechanical power type.
- Holding work-piece firmly in single and multiple vises setup.
- Rigid and high tensile casting of ductile iron.

規格 Spec.	A	B	C	D	E	F	G	I	Jaw Opening(Max.)				重量 (KGS) Weight
									J	J <sub>1</sub>	J <sub>2</sub>	J <sub>3</sub>	
LM-VE-100B	101	340	430	85	48	80	125	16	125	190	230	320	26.0
LM-VE-130B	131	405	495	95	55	85	150	18	180	240	290	380	39.0
LM-VE-160B	161	495	585	105	58	100	165		240	320	360	470	57.0
LM-VE-200B	201	570	666	110	63	108	190		280	360	420	540	86.0



# LM-VE-  C 角固式精密機械虎鉗

## LM-VE-  C MECHANICAL-TYPE PRECISION VISE



### 特點 Feature

- 內藏防止上浮機制，夾持時往下方的力亦作動，因此工件及可動體的上浮極小，又本體及固定顎為一體構造，因此可防止鉗體的傾倒

- This unit had prevent lifting structure, when clamping in down direction power also acting, so the workpiece and movable parts lift very small, the body and solid jaw is a combination structure, it does not tilt.

規格 Spec.	A	B	C	D	E	F	G	H	I	J	J <sub>1</sub>	夾持力 Power	重量 (KGS) Weight
LM-VE-100C	100	310	400	95	45	70	110	23	18	150	225	-	28.0
LM-VE-130C	130	410	500	100	50	80	135	23	18	250	330	-	46.0
LM-VE-160C	160	490	580	110	55	85	150	23	18	300	385	-	60.0
LM-VE-200C	200	565	655	120	60	100	220	23	18	350	450	-	100.0



- 較同等級虎鉗鉗口為深，可確實夾持較高之工件  
-The jaw more deeper than those of same grade vise. Can clamping higher work piece correctly.



- 全自動伸縮防塵設計，可防止切削屑所引起的動作不良  
-Chip cover adopted, preventing chips falling into causing bad motion.



- 較同等級虎鉗有近兩倍的開口，可輕易夾持較長工件  
-Double opening than those of same grade vise. Can easy clamp longer work piece.



#### 標準附件:

1. 把手壹組
2. 導正鍵 2 個  
M6×10L 螺絲 2 支
3. 虎鉗防屑裝置
4. 虎鉗固定塊 (4 只)

#### 特別附件 (另購):

1. 特別虎口
2. 虎鉗定位器
3. 大開口鉗口壹組 (L)

#### Standard Accessories:

1. Handle-1 set
2. Guide key-2pcs  
Screw-M6×10×2pcs
3. Chip cover
4. Vise positioner

#### Optional Accessories: (Purchase separately)

1. Special application jaw plates.
2. Vise positioner
3. Opening jaw plates

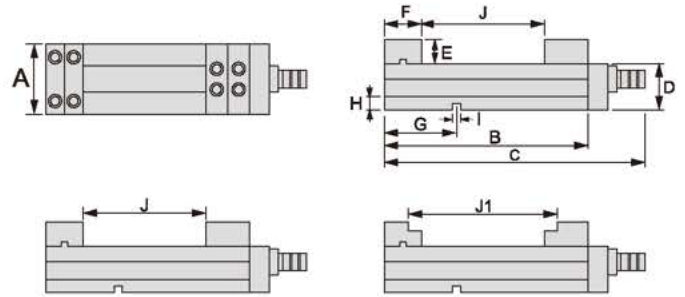






# LM-VE-S 倍力定壓式虎鉗

## LM-VE-S SUPER OPEN TYPE VISE



### 特點 Feature

- 內藏防止上浮機制，夾持時往下方的力亦作動，因此工件及可動體的上浮極小，又本體及固定顎為一體構造，因此可防止鉗體的傾倒

- This unit had prevent lifting structure, when clamping in down direction power also acting, so the workpiece and movable parts lift very small, the body and soild jaw is a combination structure, it does not tilt.

規格 Spec.	A	B	C	D	E	F	G	H	I	J	J <sub>1</sub>	夾持力 Power	重量 (KGS) Weight
LM-VE-100S	100	310	435	95	45	70	110	23	18	140	200	4000kgf	30.0
LM-VE-130S	130	410	535	100	50	80	135	23	18	230	315	4000kgf	48.0
LM-VE-160S	160	490	615	110	55	85	150	23	18	300	385	5000kgf	62.0
LM-VE-200S	200	565	690	120	60	100	220	23	18	350	450	5000kgf	105.0



- 全自動伸縮防塵設計，可防止切屑所引起之動作不良  
- Chip covered adopted, preventing chips falling into causing bad motion.



- 較同等級虎鉗有近兩倍的開口，可輕易夾持較長工件  
- Double opening than those of same grade vise. Can easy clamp longer work piece.



- 新開發專利無油倍力定壓式機械增壓系統可輕易設定所需壓力(如表)夾持力永不退壓  
- New development patented, oil-free powerful mechanical boost system. Which gives greater clamping and never collapsing pressue.

1	800kgf
2	2000kgf
3	3000kgf
4	4000kgf
5	5000kgf



#### 標準附件：

1. 把手壹組
2. 導正鍵 2 個  
M6×10L 螺絲 2 支
3. 虎鉗防屑裝置
4. 虎鉗固定塊 (4 只)

#### 特別附件 (另購)：

1. 特別虎口
2. 虎鉗定位器
3. 大開口鉗口壹組 (LJ)

#### Standard Accessories:

1. Handle-1 set
2. Guide key-2pcs  
Screw-M6×10L×2pcs
3. Chip cover
4. Vise positioner

#### Optional Accessories:

- (Purchase separately)
1. Special application jaw plates.
  2. Vise positioner
  3. Opening jaw plates

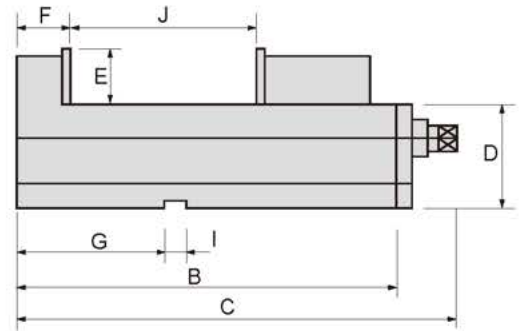




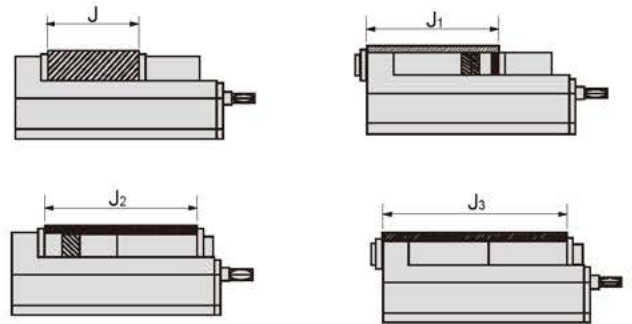
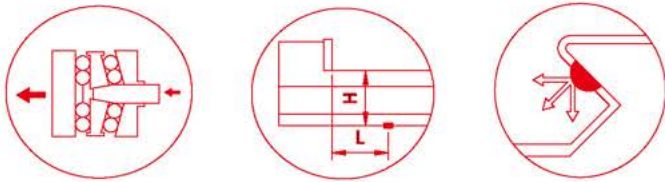
# LM-VE-\_P 倍力式虎鉗

## LM-VE-\_P MECHANICAL POWER VISE

PAT.



### 範例 Example



### 特點 Feature

- 倍力式增壓機構
- 總長度較短、大開口、轉動扳手較省力

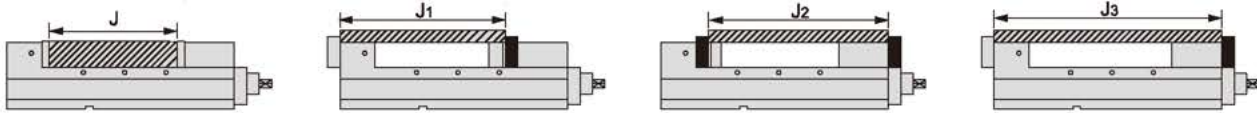
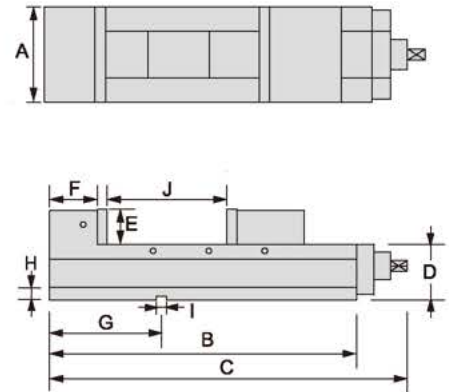
- Mechanical power structure.
- The total length is short, the big aperture, to rotate the spanner to reduce effort.

規格 Spec.	A	B	C	D	E	F	G	I	J	J <sub>1</sub>	J <sub>2</sub>	J <sub>3</sub>	夾持力 Power	重量 (KGS) Weight
LM-VE-100P	101	340	470	85	48	80	125	16	145	190	230	320	4000kgf	27.0
LM-VE-130P	131	405	535	95	55	85	150	18	220	240	290	380	4500kgf	40.0
LM-VE-160P	161	495	625	105	58	100	165	18	300	320	360	470	5200kgf	58.0
LM-VE-200P	201	570	700	110	63	108	190	18	340	360	420	540	6250kgf	87.0



## CHW-\_P 精密倍力式虎鉗

CHW-\_P UNIVERSAL POWERFUL-TYPE PRECISION VISE



### 特點 Feature

- 附防止所夾持工件上浮的角固裝置
- 倍力式增壓機構

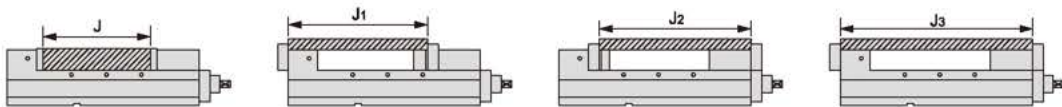
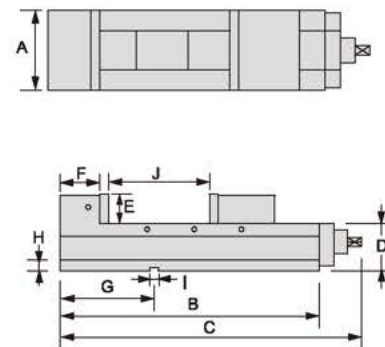
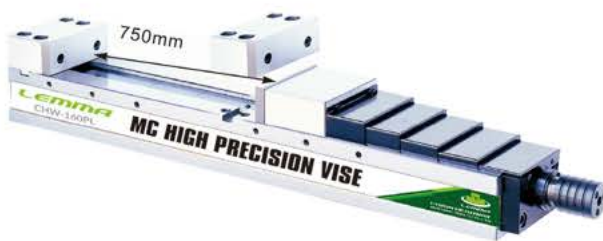
- The unit had prevent lifting structure.
- Mechanical power structure.

規格 Spec.	A	B	C	D	E	F	G	H	I	J	J <sub>1</sub>	J <sub>2</sub>	J <sub>3</sub>	夾持力 Power	重量 (KGS) Weight
CHW-100P	100	400	530	85	45	80	110	23	18	200	230	260	340	4000kgf	35.0
CHW-130P	130	450	580	95	50	85	135	23	18	240	285	320	405	4500kgf	48.0
CHW-160P	160	550	680	100	60	103	200	23	18	300	380	400	500	5000kgf	66.0
CHW-200P	200	600	730	110	60	108	220	23	18	340	438	470	578	5500kgf	104.0



## CHW-\_PL 精密倍力式虎鉗 (超長型)

CHW-\_PL UNIVERSAL POWERFUL-TYPE PRECISION VISE (LENGTHEN)



### 特點 Feature

- 最大開口 750mm

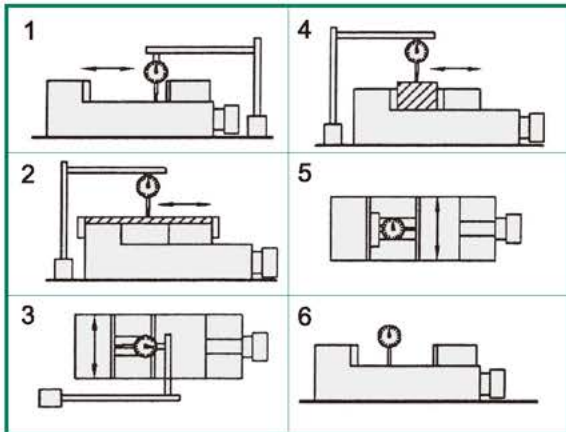
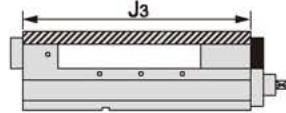
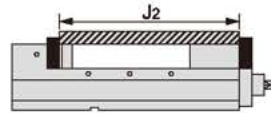
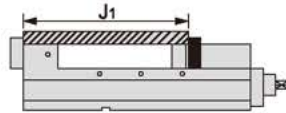
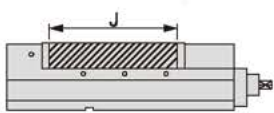
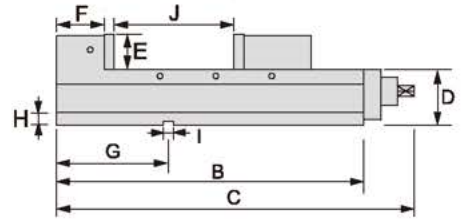
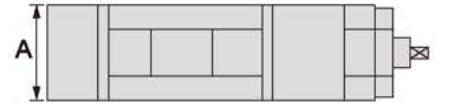
- Max. opening capacity 750mm.

規格 Spec.	A	B	C	D	E	F	G	H	I	J	J <sub>1</sub>	J <sub>2</sub>	J <sub>3</sub>	夾持力 Power	重量 (KGS) Weight
CHW-160PL	160	1000	1130	105	60	103	100	23	18	750	850	890	1000	4400kgf	108.0
CHW-200PL	200	1100	1230	110	60	108	220	23	18	840	940	990	1100	5500kgf	145.0



# CHW- V 角固式油壓精密虎鉗

## CHW- V HYDRAULIC & ANGLE LOCK VISE



※ 精度測定方法 Accuracy Testing Standard

NO	檢查事項 Item	JIS 規格 1 級 JIS Grade 1	驗證許可 Guaranteed
1	虎鉗底部與滑動面之平行度 Surface of vise bed parallel to bottom of vise body.	0.020 100mm	0.010 100mm
2	虎鉗大開口工件之平行度 Max opening test block parallel to bottom of vise body.	0.050 100mm	0.030 100mm
3	虎鉗底部鍵槽與虎口板之直角度測定 Keyways on bottom of vise bed square to clamping surface of jaw plate.	0.020 100mm	0.015 100mm
4	工作夾緊後之平行度 Top of rectangular test block clamped tightly by jaw parallel to bottom of vise body.	0.030 100mm	0.020 100mm
5	兩虎口板相互平行度 Both jaw plate parallel.	0.020 100mm	0.020 100mm
6	虎鉗側立與工作台之直角度 Vise side-lock on bottom slide way square.	0.020 100mm	0.010 100mm

### 特點 Feature

- 強而有力材質 | 虎鉗本台使用球狀石墨化鑄鐵 (FCD60-60kgs/mm<sup>2</sup>) 抗張力強、耐磨性高、不易變形
- 虎鉗本台滑動面均經硬化熱處理 HRC45 以上，可保持長久耐磨性及精度

- Rigid material-vise body of ductile iron FCD60 JIS (equal to GGG60) with 60 kgs/mm<sup>2</sup> or 80000 psi tensile strength.
- Vise bed flange with harden treatment up to HRC45° and up takes up wear and maintain for long.

規格 Spec.	A	B	C	D	E	F	G	I	J	J <sub>1</sub>	J <sub>2</sub>	J <sub>3</sub>	夾持力 Power	重量 (KGS) Weight
CHW-100V	101	340	470	85	48	80	125	16	125	190	230	320	4000kgf	27.0
CHW-130V	131	405	535	95	55	85	150	18	180	240	290	380	5000kgf	40.0
CHW-160V	161	495	625	105	58	100	165	18	240	320	360	470	5500kgf	58.0
CHW-200V	201	570	700	110	63	108	190	18	280	360	420	540	6900kgf	87.0

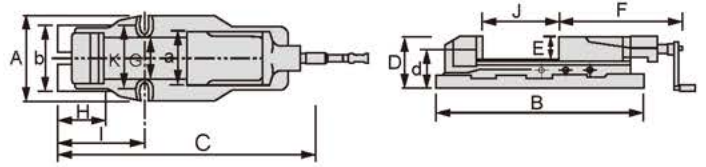






## AH 內藏式油壓虎鉗

### AH UNIVERSAL HYDRAULIC PRECISION VISE

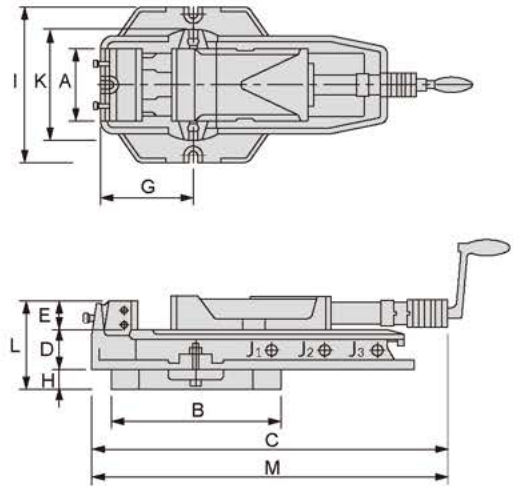


規格 Spec.	A	B	C	D	E	F	G	H	I	J	K	a	b	d	開口行程 Clamping Range			夾持力 Power	重量 (KGS) Weight
															X	Y	Z		
AH-4	160	430	525	94	36	263	78	100	155	170	120	100	130	60	0~60	57~115	110~170	2500kgf	18.0
AH-5	185	540	670	118	46	341	97	117	185	220	145	125	165	72	0~72	70~140	195~220	3500kgf	34.0
AH-6	240	620	800	133	51	380	116	125	247	300	200	150	200	82	0~100	98~200	195~300	5000kgf	55.0
AH-8	280	700	900	162	62	435	160	165	266	300	240	200	240	100	0~100	98~200	195~300	7000kgf	90.0



## LM-VE- H 外藏式油壓虎鉗

### LM-VE- H HYDRAULIC & ANGLE LOCK VISE



#### 特點 Feature

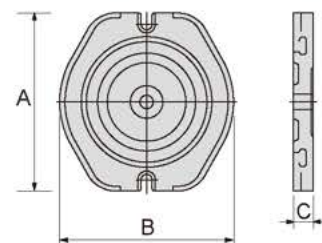
- 本體材質為球墨鑄鐵
- 角回式半圓球可產生角回下鎖之力，可消除虎口上浮和工件傾斜
- 虎鉗本台滑動面均經硬化熱處理 HRC 45°以上，可保持長久耐磨性及精度
- 油壓的最大夾持力為 4000kg

- The body is made of ductile iron.
- Down thrust "semi-sphere segment" mechanism-eliminates lift and work tilt.
- Vise bed flame hardened to HRC 45° and up takes up wear
- Max. hydraulic clamping force 4000kg.

規格 Spec.	A	B	C	D	E	G	H	I	K	L	M	行程開口 Stroke Opening			重量 (KGS) Weight
												J <sub>1</sub>	J <sub>2</sub>	J <sub>3</sub>	
LM-VE-125H	130	266	505	75	56	180	32	280	190	160	570-795	0-55	55-130	130-220	37.5
LM-VE-160H	160	320	605	85	75	195	35	334	240	192	625-935	0-58	58-160	160-310	57.4
LM-VE-200H	200	420	700	100	90	265	50	420	280	240	725-1035	0-63	63-200	200-310	94.5

規格 Spec.	A	B	C	重量 (KGS) Weight
LM-VE-125H-B	280	266	32	12.0
LM-VE-160H-B	330	310	35	16.0
LM-VE-200H-B	375	355	40	16.0

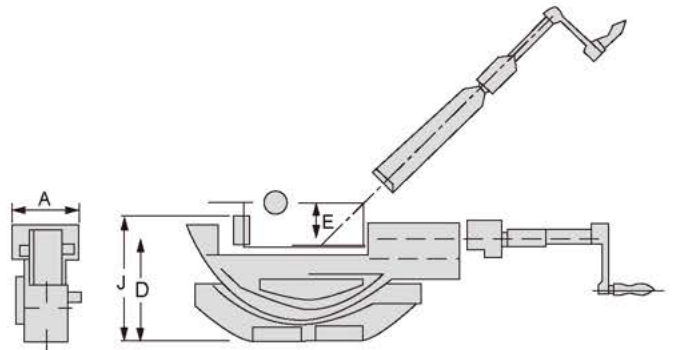
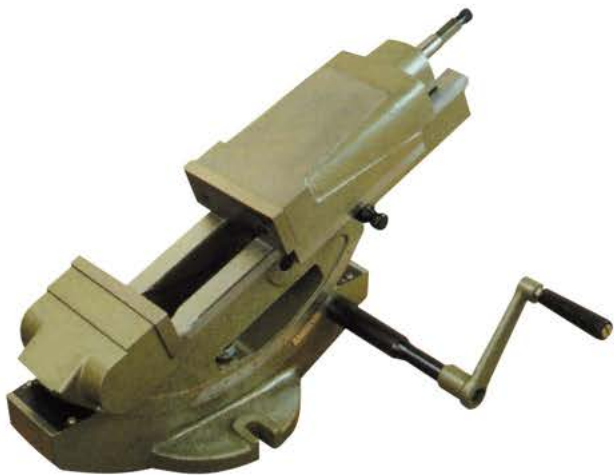
※ 底盤選配 Optional chassis.





## JLB 傾斜式油壓內藏虎鉗

JLB UNIVERSAL HYDRAULIC TILTING VISE

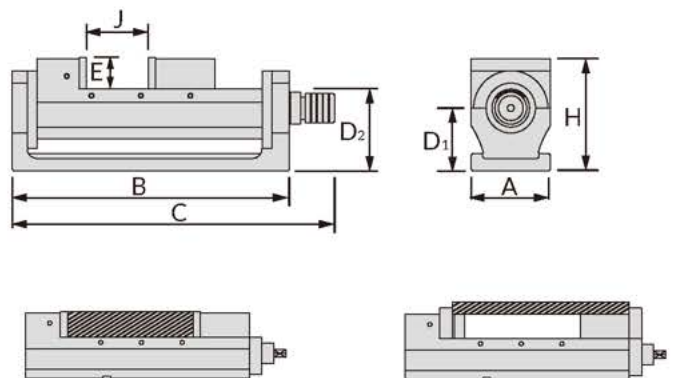


規格 Spec.	A	D	E	J	夾持力 Power	重量 (KGS) Weight
JLB-40	100	177	36	0-170	2540	23.0
JLB-60	154	237	53	0-300	4400	60.0



## LM-VE- U 傾斜式虎鉗

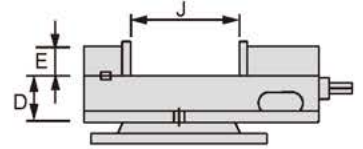
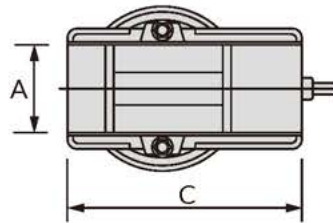
LM-VE- U TILTING VISE



規格 Spec.	A	B	C	D <sub>1</sub>	D <sub>2</sub>	E	H	J	調整高度 Adjustable Angle	夾持力 Power	重量 (KGS) Weight
LM-VE-160U	160	550	645	126	165	63	225	200	0° ~50°	5500kgf	80.0



## 角固式虎鉗 FIXED ANGLE VISE

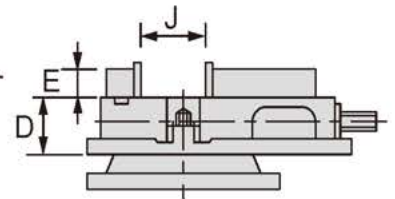
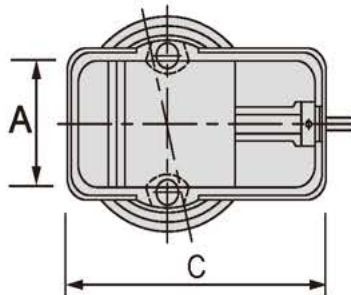


規格 Spec.	A	C	D	E	J	重量 (KGS) Weight
AV-4	100	320	65	36	100	20.0
AV-6	150	430	72	46	140	41.0
AV-8	200	600	85	62	190	73.0
AV-12	310	-	-	125	320	125.0

※ AV-12 無底盤 AV-12 no chassis.



## K 型銑床虎鉗 K-TYPE MILLING VISE

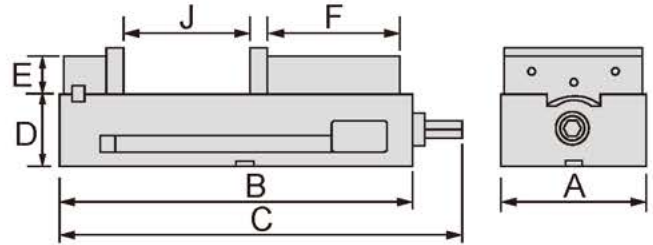


規格 Spec.	A	C	D	E	J	重量 (KGS) Weight
KV-4	100	295	55	30	65	9.00
KV-6	150	460	65	40	114	28.0
KV-8	200	620	82	58	150	53.0





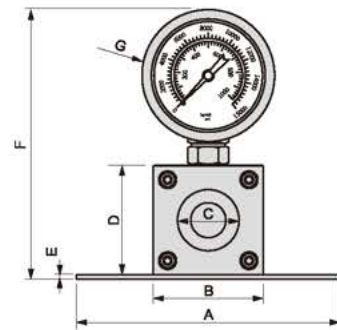
## 直角式角固虎鉗 FIXED ANGLE VISE



規格 Spec.	A	B	C	D	E	F	J	重量 (KGS) Weight
VAV-6	150	368	400	75	40	140	148	29.0



## LM-PM 虎鉗測壓力計 LM-PM THE VISE MEASURES THE PRESSURE GAUGE



### 特點 Feature

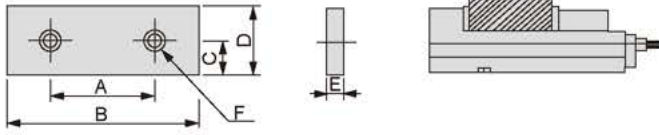
- 測量虎鉗壓力值 · 是否合乎標準值

- Survey vise value of pressure, whether to conform with the normal value.

規格 Spec.	A	B	C	D	E	F	G	重量 (KGS) Weight
LM-PM-1000	120	50	28	50	2	140	70	1.16



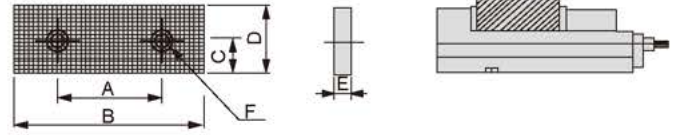
# 虎口板 (CHW-\_B、CHW-\_P 適用) APPLICATION JAW PLATES (APPLICABLE CHW-\_B、CHW-\_P)



※ 標配 Standard accessories

規格 Spec.	A	B	C	D	E	F	重量 (KGS) Weight
J1 - 100	70	98	25	48	15	M8	-
J1 - 130	100	128	25	53	15	M8	1.54
J1 - 160	100	158	25	63	18	M10	-
J1 - 200	120	198	28	63	18	M12	-

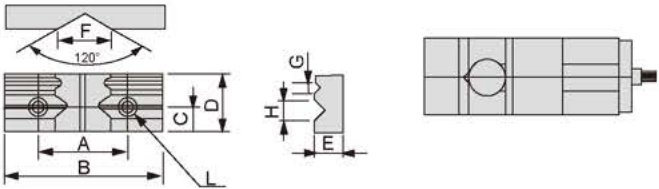
數量：一組兩塊 Qty: two piece per set



※ 選配 Option accessories

規格 Spec.	A	B	C	D	E	F	重量 (KGS) Weight
J2 - 100	70	98	25	48	15	M8	-
J2 - 130	100	128	25	53	15	M8	-
J2 - 160	100	158	25	63	18	M10	-
J2 - 200	120	198	28	63	18	M12	3.00

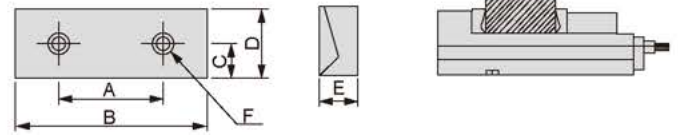
數量：一組兩塊 Qty: two piece per set



※ 選配 Option accessories

規格 Spec.	A	B	C	D	E	F	G	H	L	重量 (KGS) Weight
J3 - 100	70	98	25	48	30	25	-	25	M8	-
J3 - 130	100	128	25	53	30	25	12	25	M8	-
J3 - 160	100	158	25	63	30	25	12	27	M10	-
J3 - 200	120	198	28	63	34	30	12	30	M12	-

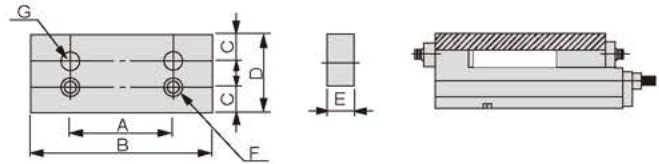
數量：一組一塊 Qty: one piece per set



※ 選配 Option accessories

規格 Spec.	A	B	C	D	E	F	重量 (KGS) Weight
J4 - 100	70	98	25	48	30	M8	-
J4 - 130	100	128	25	53	32	M8	-
J4 - 160	100	158	25	63	32	M10	-
J4 - 200	120	198	28	63	40	M12	-

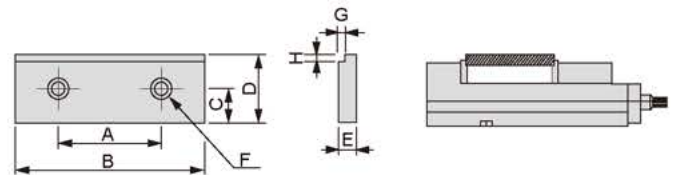
數量：一組兩塊 Qty: two piece per set



※ 選配 Option accessories

規格 Spec.	A	B	C	D	E	F	G	重量 (KGS) Weight
J5 - 100	70	98	25	58	24	M8	M12	1.9
J5 - 130	100	128	25	63	24	M8	M12	-
J5 - 160	100	158	25	73	24	M10	M14	-
J5 - 200	120	198	28	77	24	M12	M16	-

數量：一組兩塊 Qty: two piece per set



※ 選配 Option accessories

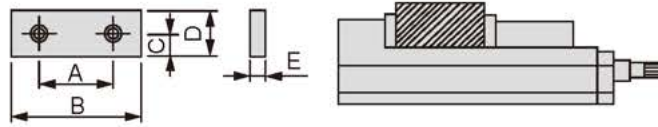
規格 Spec.	A	B	C	D	E	F	G	H	重量 (KGS) Weight
J6 - 100	70	98	25	48	15	M8	5	5	-
J6 - 130	100	128	25	53	15	M8	5	5	-
J6 - 160	100	158	25	63	18	M10	5	5	-
J6 - 200	120	198	28	63	18	M12	5	5	-

數量：一組兩塊 Qty: two piece per set



# 虎口板 (LM-VE-\_B、LM-VE-\_P、CHW-\_V 適用)

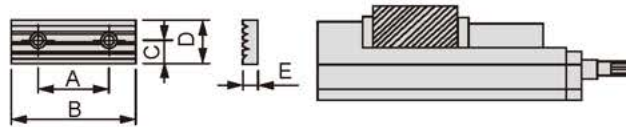
APPLICATION JAW PLATES (APPLICABLE LM-VE\_B、LM-VE\_P、CHW\_V)



※ 標配 Standard accessories

規格 Spec.	A	B	C	D	E	重量 (KGS) Weight
HJ - 100	60	100	22	48	15	-
HJ - 130	90	130	25	55	15	-
HJ - 160	90	160	25	58	15	1.50
HJ - 200	120	200	28	63	18	-

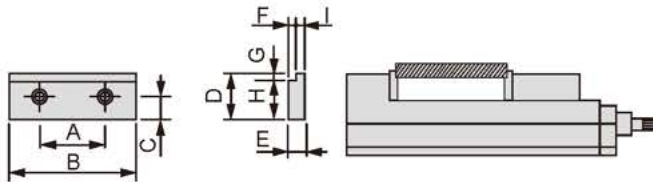
數量：一組兩塊 Qty: two piece per set



※ 選配 Option accessories

規格 Spec.	A	B	C	D	E	重量 (KGS) Weight
LJ - 100	60	100	22	48	15	-
LJ - 130	90	130	25	55	15	-
LJ - 160	90	160	25	58	15	-
LJ - 200	120	200	28	63	18	-

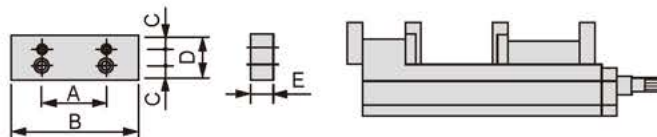
數量：一組兩塊 Qty: two piece per set



※ 選配 Option accessories

規格 Spec.	A	B	C	D	E	F	G	H	I
SJ - 100	60	100	22	48	15	5	5	43	10
SJ - 130	90	130	25	55	15	5	5	50	10
SJ - 160	90	160	25	58	15	5	5	53	10
SJ - 200	120	200	28	63	18	5	5	58	13

數量：一組兩塊 Qty: two piece per set



※ 選配 Option accessories

規格 Spec.	A	B	C	D	E	重量 (KGS) Weight
TJ - 100	60	100	22	64	21	-
TJ - 130	90	130	25	69	24	-
TJ - 160	90	160	25	74	24	-
TJ - 200	120	200	28	88	31	-

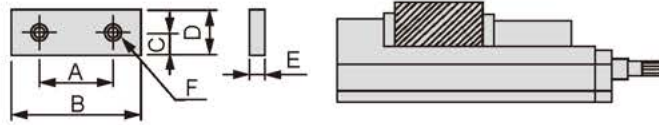
數量：一組兩塊 Qty: two piece per set





# 虎口板 (LM-VE-\_B、LM-VE-\_P、CHW-\_V 適用)

APPLICATION JAW PLATES (APPLICABLE LM-VE\_B、LM-VE\_P、CHW\_V)

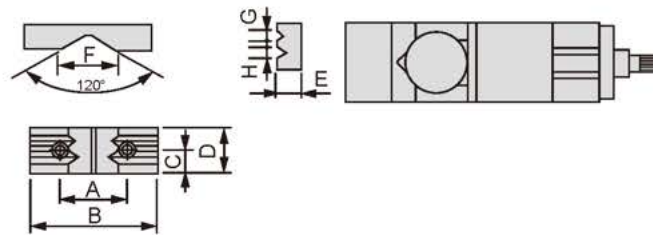


※ 選配 Option accessories

規格 Spec.	A	B	C	D	E	F
FJ-1002	60	100	22	63	21	M10
FJ-1003	60	100	22	73	23	M10
FJ-1004	60	100	22	48	48	M10
FJ-1005	60	100	22	63	48	M10
FJ-1301	90	130	25	55	15	M10
FJ-1302	90	130	25	73	23	M10
FJ-1303	90	130	25	103	30	M10
FJ-1304	90	130	25	63	48	M10
FJ-1305	90	130	25	73	48	M10

規格 Spec.	A	B	C	D	E	F
FJ-1601	90	160	25	58	15	M10
FJ-1602	90	160	25	73	23	M10
FJ-1603	90	160	25	103	30	M10
FJ-1604	90	160	25	63	48	M10
FJ-1605	90	160	25	73	48	M10
FJ-2001	90	200	28	63	18	M12
FJ-2002	90	200	28	103	30	M12
FJ-2003	90	200	28	123	37	M12
FJ-2004	90	200	28	63	63	M12
FJ-2005	120	200	28	102	63	M12

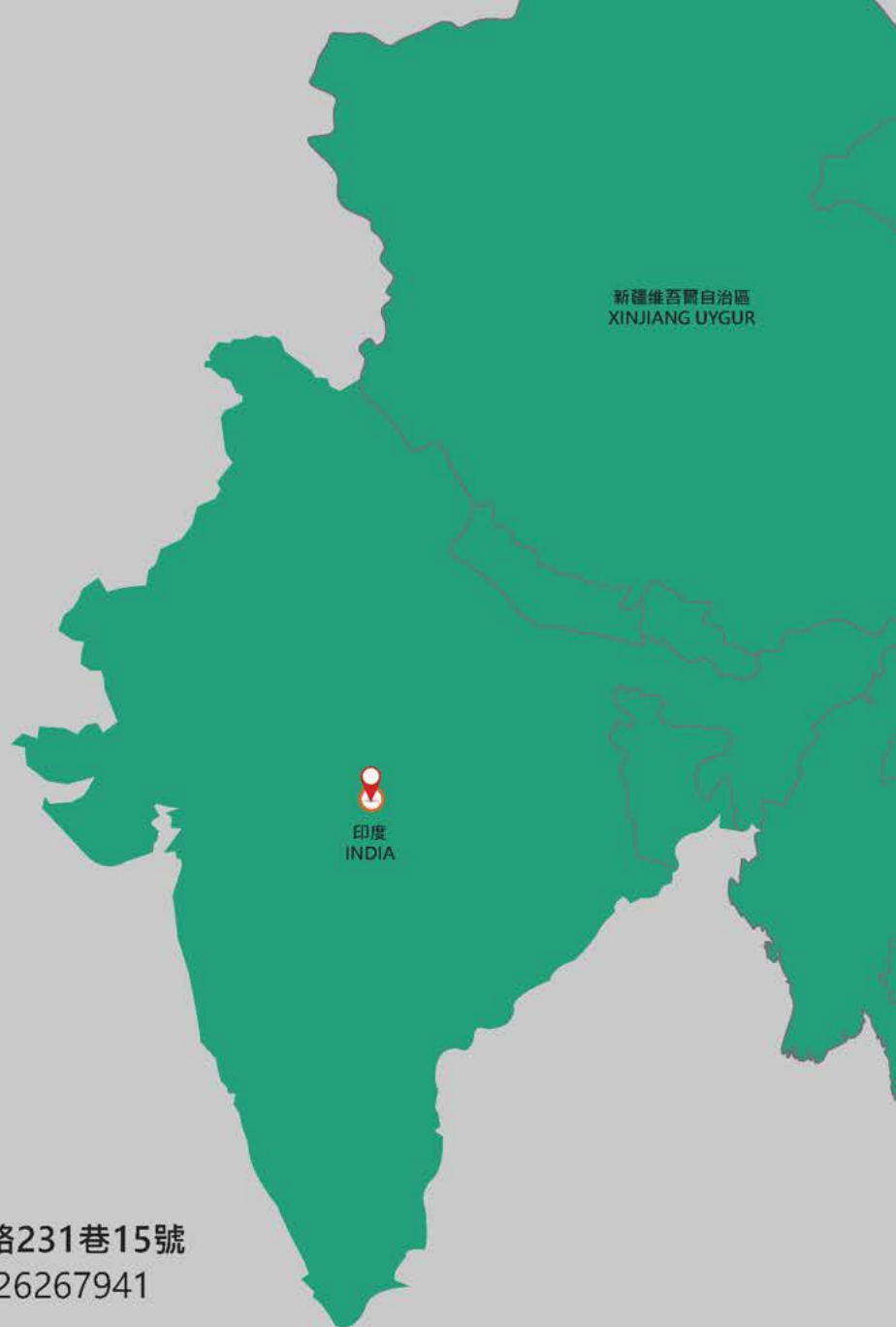
數量：一組兩塊 Qty: two piece per set



※ 選配 Option accessories

規格 Spec.	A	B	C	D	E	F	G	H
VJ-100	60	100	22	48	30	120°	13.9	20.8
VJ-130	90	130	25	55	32	120°	13.9	31.2
VJ-160	90	160	25	58	32	120°	15.6	29.4
VJ-200	120	200	28	63	40	120°	12.1	24.6

數量：一組一塊 Qty: one piece per set



新疆維吾爾自治區  
XINJIANG UYGUR

印度  
INDIA

台灣總公司 台中市清水區高美路231巷15號  
電話：04-26265252 傳真：04-26267941

臺北分公司 新北市三重區河邊北街256巷26號  
電話：02-29788234 傳真：02-29788250

台中分公司 台中市東區東光園路60號  
電話：04-22809292 傳真：04-22801909

豐原營業所 台中市豐原區圓環北路一段98號  
電話：04-25237272 傳真：04-25233232

竹苗營業所 苗栗縣竹南鎮博愛街328-1號  
電話：037-462992 傳真：037-462248

台南分公司 台南市安南區海佃路一段213巷26號  
電話：06-3505656 傳真：06-3505979



### 中國大陸營運本部

江蘇省昆山陸豐東路模具城J區12號樓

電話:0512-57874601

傳真:0512-57874602

### Chennai Branch Office

NO. 52/49A, Dhankotti raja Street, Ekkattuthangal, Chennai, 600032. India

聯絡電話：+91-9884761375/ +91-8012233925

信箱：cc-india@chmt.com.tw

### Philippines Branch Office

1st floor half center Unit of Lot C/D Paseo Square De Carmona , Governor's Drive , Brgy. Maduya , Carmona , Cavite. Philippines

聯絡電話：(046) 413 9187 / (0917) 583 2702

信箱：JoeAllan@chmt.com.tw / cc-philippines@chmt.com.tw





## 正河源機械配件有限公司

CHAIN HEADWAY MACHINE TOOLS CO.,LTD

### 夾治具事業部

Clamping System Department

+886-4-26265252

+86-0512-57874601

+886-4-26267941

+86-0512-57874602

台灣台中市清水區高美路231巷15號

中國江蘇省昆山市陸豐東路模具城J區12號樓

### 新地址

台灣台中市清水區五權路232號

[www.chain-headway.com](http://www.chain-headway.com)

[youtube.com/chmt99](https://youtube.com/chmt99)

[twitter.com/ChainHeadway](https://twitter.com/ChainHeadway)

[facebook.com/ChainHeadway\(Taiwan/Myanmar/Philippines/India\)](https://facebook.com/ChainHeadway(Taiwan/Myanmar/Philippines/India))

公司聯絡資訊請貼此處

其他服務據點訊息透過官網查詢