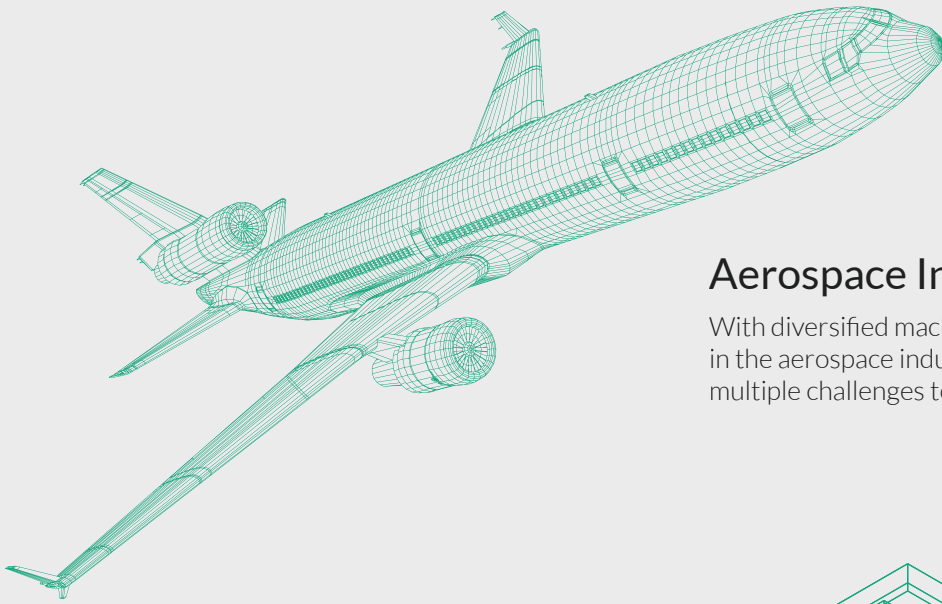




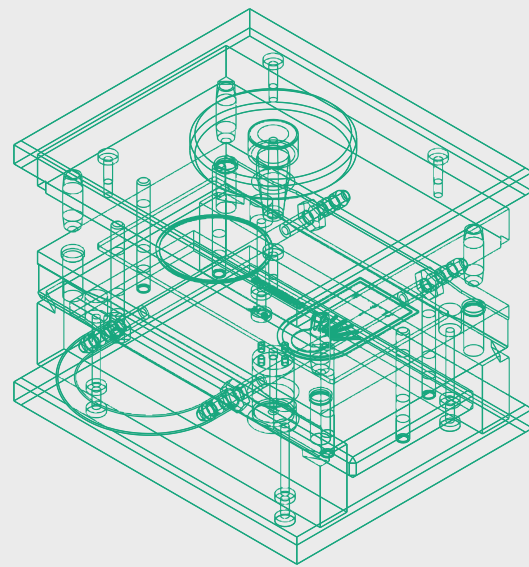
Chain Headway Customized Design

Modular design - specialized for your industries



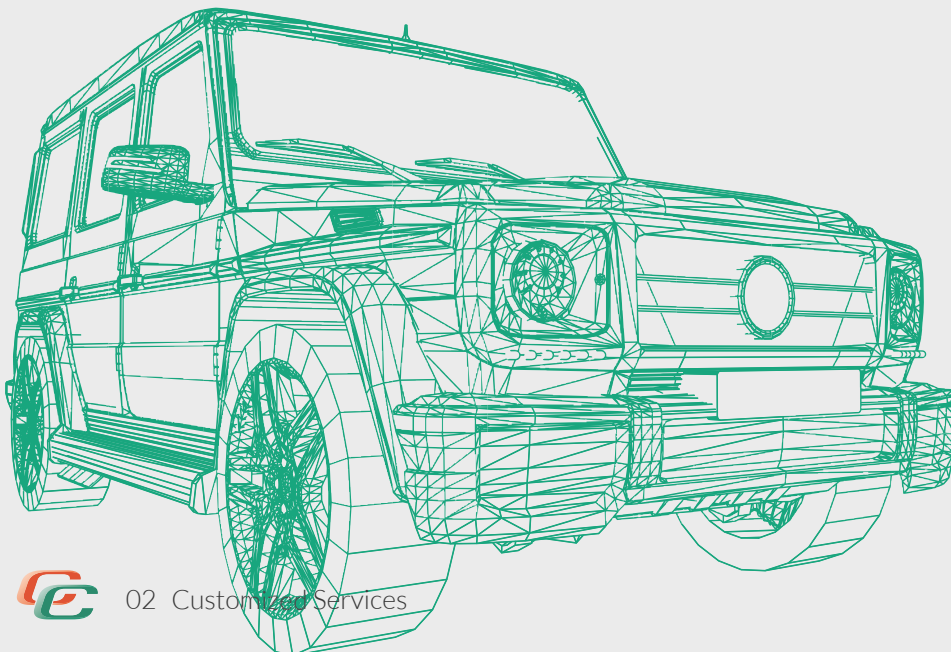
Aerospace Industry

With diversified machining of the special materials used in the aerospace industry, such machining also poses multiple challenges to manufacturers in the industry.



Mold Industry

The development of the mold & die industry is closely related to industrial development. To respond to increasingly shorter product life cycles, the production of molds should be faster and faster, too.



Automotive Industry

In view that the fast development of the automotive industry requires light-weight materials and special applications, we offer solutions with cutting-edge tools.



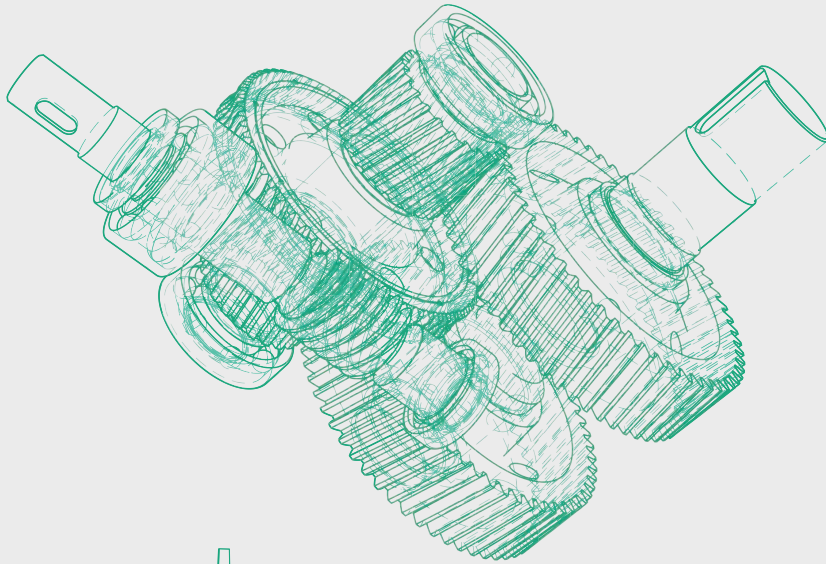
For Your Business

We provide customized services to your industry.



Specialized Services for Different Industries

CHAIN HEADWAY sells as many as 22,000 items of products as well as provides services of customized products to solve any machining need. We have specialized personnel who are able to offer best integrated programs to generate maximum production benefits for clients. CHAIN HEADWAY offers integrated programs of cutting and innovatively developed products to help our clients take full advantage ahead of others in this ever-changing industry.

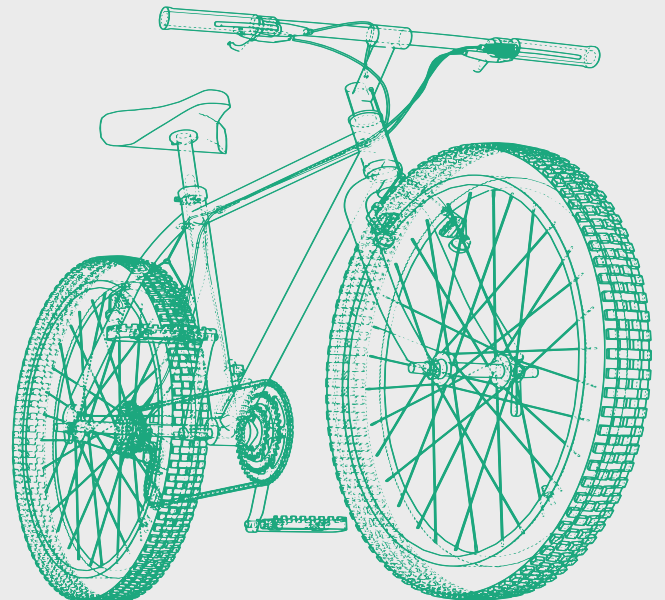


General Machining Industries

As the greatest challenge faced in processing general is speed and price, choosing the right processing tools is inevitable.

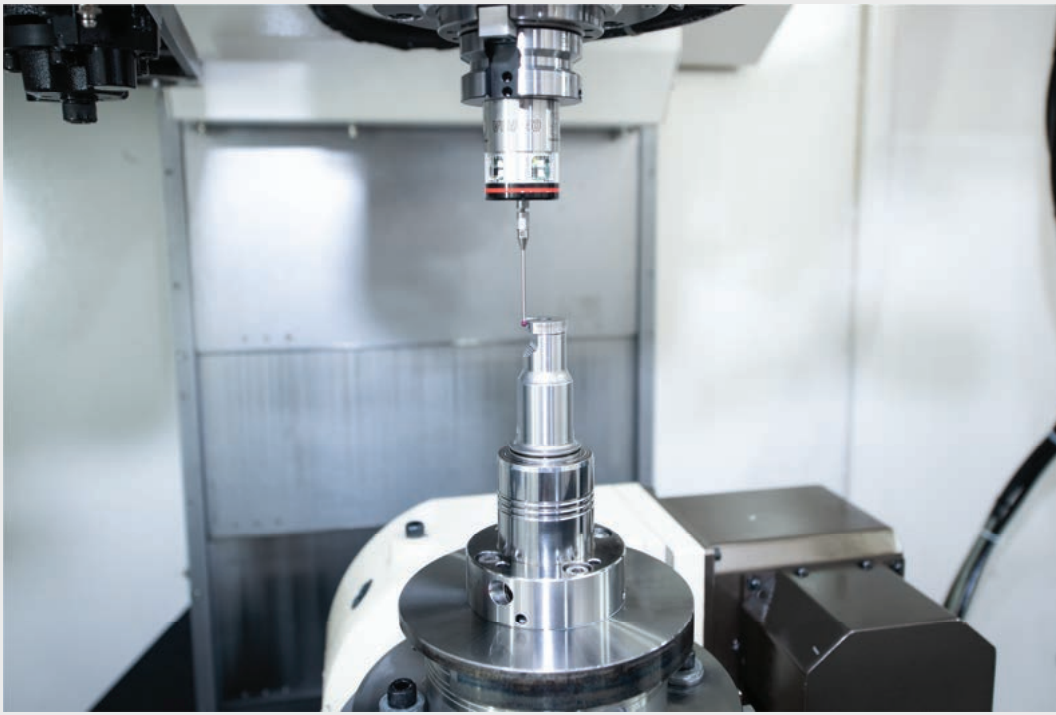
Bicycle Industry

Environmental protection is getting more important to the globe, bicycle has become one of the indispensable vehicle for human mobility, having a good tool is one of the important method to design a good bicycle.



Energy Industry

The development of the energy industry depends upon durable and highly efficient raw materials; it is thus remarkably strict and demanding in the course of production and manufacture.



Our Specialized Technology We design for Your Special Needs

Time + Efficiency + Stability = Benefits

We are dedicated to planning on better innovated and more efficient customized service for you.

Be it heavy , light or ordinary machining, a number of particular machining conditions or non-general machining conditions that technicians encounter are without doubt distressful for the technicians.

The specialized teams of technology and design at CHAIN HEADWAY are able to help you solve your specific needs in least time. With abundant experiences in various industrial fields over years, we are able to accurately design tools and clamping systems customized for you. We believe that to possess good specialized technology teams as your good partner is sure to enhance your productivity and benefit significantly.



Modular Design Process

Specialized for your industries

M01

Requirement
Analysis

M02

Technological
Design

M03

Cutting Tools
Solution

M04

Clamping System
Solution

M05

Manufacture

M06

Acceptance Test
Performance
Analysis

Chain Headway Professional Technological Team



Effectively help
improve production
process



Increase tool life
Increase productivity



Optimize processes
for mass
production planning

Accurately Design

Cutting Tools and Clamping System for your Industries

To address process needs of all kinds, our product range includes tool shanks, cutting tools, blades and auxiliary tools. Also, we never compromise when it comes to attention to details. The important task of CHAIN HEADWAY is to address customers' needs, to which end, good communications and being ready to assist are essential. To fulfill this task, rigorous inspection procedures and standards are in place in terms of both manufacture and inspection. At CHAIN HEADWAY, a diverse range of product and kind professionals are always available.

M01

Requirement Analysis

We analysis client's need, we help our client to plan thier own procedure, cutting tools and clamping system.

M02

Technological Design

A unique design for our client through the analysis result by our Chain Headway R&D and manufacture team.

M03

Cutting Tools Solution

Standard cutting tools will not satisfy for client's need, Chain Headway team has the ability to help you to customize your own cutting tools to improve your efficiency.





M04

Clamping System Solution

Chain Headway has the ability to help our client to improve their efficiency through the clamping system, it just like a car need four specify tyres.

M05

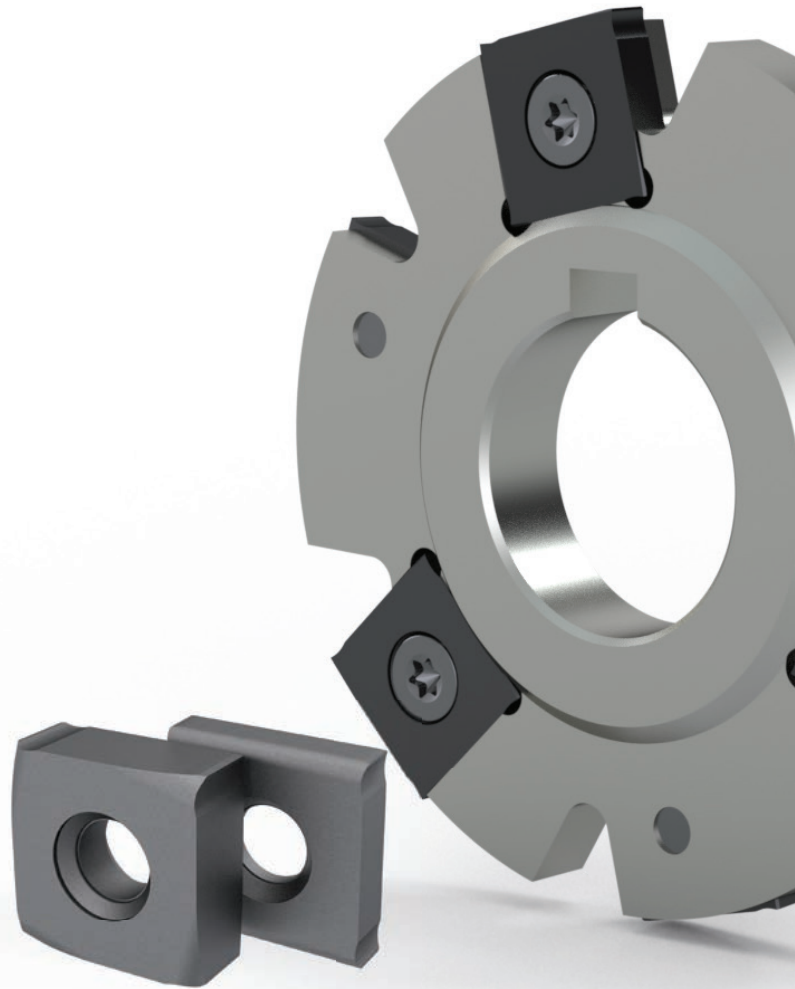
Manufacture

Chain Headway has the ability to manufacture tools, we do have a constant temperature factory, constant temperature plant stable quality.

M06

Acceptance Test Performance Analysis

We guarantee our product stability and performance, we ensure our client in good condition all the time.



Example of Success (1)

Those client who work together with us through the modular has increase more than 50% of efficiency.

Improvement Project

Project 1

Same tool with different angles that decrease the cost of the tools.

Project 2

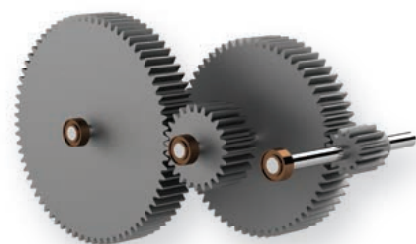
Workpiece can be done in single process, increased the efficiency.

Project 3

Exchangable inserts design, increasing the life of tools.

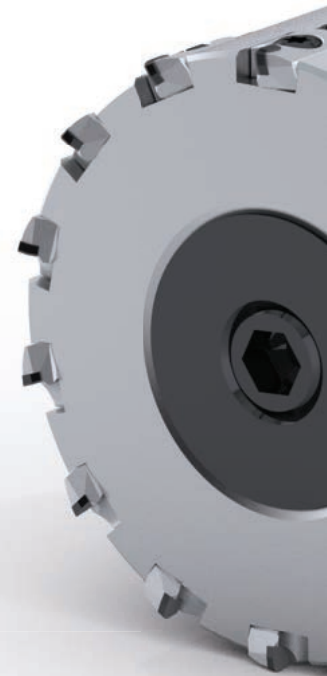
Project 4

No need to regrinding, overall efficiency improvement.





Workpiece: General Workpiece



Example of Success (2)

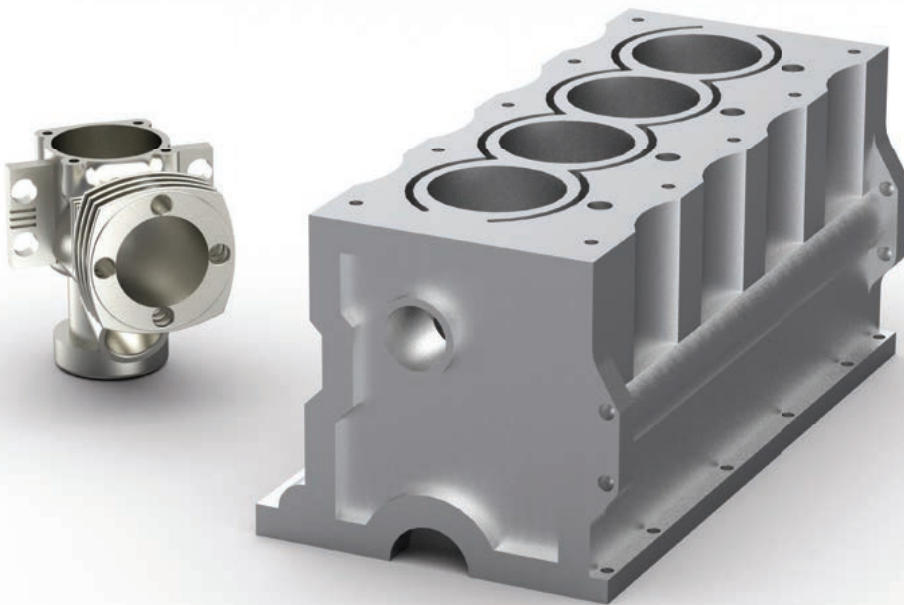
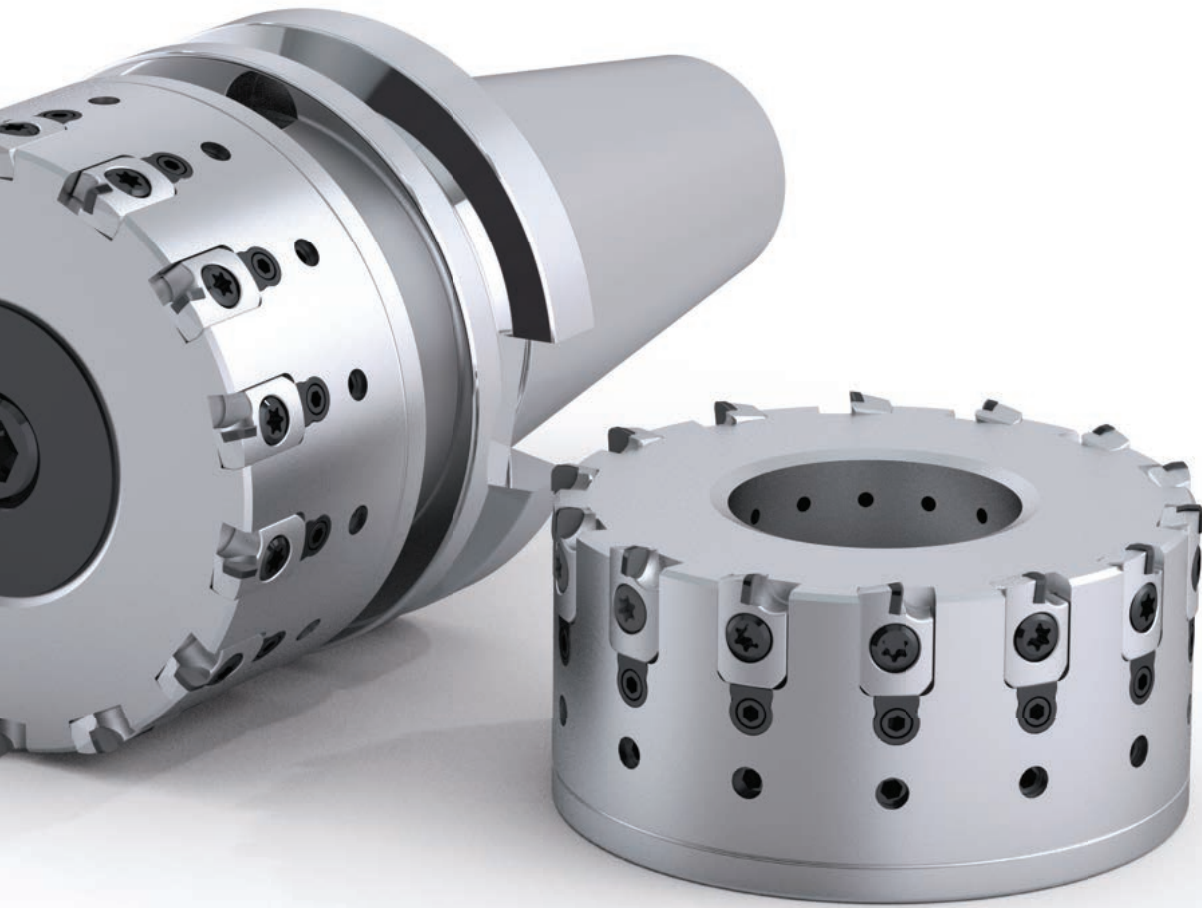
Those client who work together with us through the modular has increase more than 50% of effeciency.

Improvement Project

Project 1

Achieved mirror surface without secondary surface polishing, reducing woking hours.





Workpiece: Automobile Accessories



Example of Success (3)

Those client who work together with us through the modular has increase more than 50% of effeciency.

Improvement Project

Project 1

The whole working process can be completed in one time calibration(without disassembly).

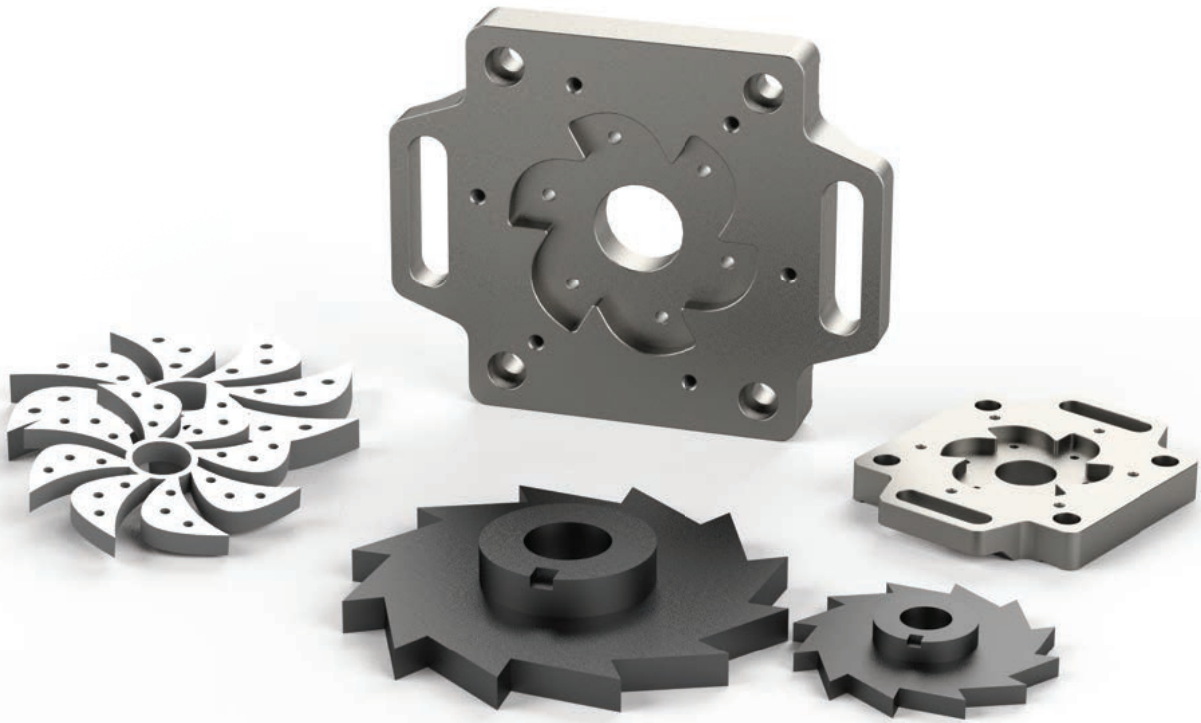
Project 2

Positioning accurarcy, acheived excellent processing quality.





Workpiece: Rail Workpiece



Workpiece: Machine Accessories

M01

M02

M03

M04

M06

Example of Success (4)

Those client who work together with us through the modular has increase more than 50% of effeciency.

Improvement Project

Project 1

Manufacturing process optimized through the programming and clamping system.

Project 2

The clamping system could fit various sizes of workpiece.

Project 3

Reduce unnecessary tool customization.

Project 4

Overall, it has been increased the processing time and benefits.



Inserts - Example of Success

The inserts is tailored to address the customer's requirement, for example: material, shape, function or benefits.



ACMQ1711AFR-RET57 PCD

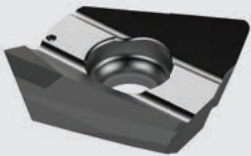
M01

M02

M03

M05

M06



ANGT110508 PDF-AR PCD

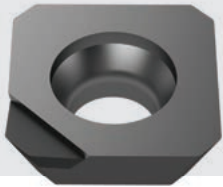
M01

M02

M03

M05

M06



SETH1204-R30 PCD

M01

M02

M03

M05

M06



APEW160404-L10 PCD

M01

M02

M03

M05

M06



APEW160404 PTFR PCD

M01

M02


M03


M05


M06




CHAIN HEADWAY MACHINE TOOLS CO.,LTD

 +886-4-26265252

 +886-4-26267941

 No. 232, Wuquan Rd., Qingshui Dist., Taichung City 436, Taiwan

 www.chain-headway.com

 youtube.com/chmt99

 twitter.com/ChainHeadway

 [facebook.com/ChainHeadway\(Taiwan/Myanmar/Philippines/India\)](https://facebook.com/ChainHeadway(Taiwan/Myanmar/Philippines/India))



LINE



Whatsapp



Wechat

Company Information Please Paste Here

Other Sales Region Please Review Our Website