



# MEDIA PACKAGE

展覽會刊



# Keep Up With The Times & Proactive Advanced Manufacturing 與時俱進 先端製造

## Proactive Advanced Manufacturing

Chain Headway was founded in 1992 to develop and produce cutting tools and accessories for CNC machining centers. Our company has developed over the years to provide a stable production environment with advanced R&D and manufacturing capabilities.

This is designed to provide cutting edge products and more efficient materials processing solutions for various types of industries. Our investment in R&D helps us to deliver the latest materials processing solutions for intelligent manufacturing to our customers.

- We are partnered with the University of Science & Technology developing a group of future Cutting professionals.
- We have a new 8250 square meter production facility which combines our office buildings with automated production facilities.
- Our production and inspection equipment is sourced from Japan and Europe to maintain the best possible quality and efficiency.

Industry processing challenges are constantly evolving with the development of high temperature alloys and composite materials. Our management team is proactively addressing these evolving materials processing requirements to rapidly develop & provide customers with the latest material processing solutions and the best possible customer service.

正河源股份有限公司創立於西元1992年，經營方針致力於CNC加工中心機週邊工具及切削刀具，近年因應切削市場需求公司投入更多資源建立完善營運環境及先端製造設備，為機械加工業者提供更優質的產品品質及加工效率提升。在研發方向著重於未來智能化製造相關週邊工具及切削刀具，人力資源投入方面結合科技大學共同培育未來切削領域專業人才，在資源投入方面包括8250平方米現代辦公大樓及自動化製造廠區，歐洲日本生產設備及檢驗設備等。因應未來科技發展高溫合金及非鐵金屬材料應用於各產業，正河源經營團隊展現Cutting Edge Solution 快速解決客加工需求的專業與服務熱忱，持續研發生產高效能切削刀具為機械加工業者提供最佳服務。





正河源



正河源機械配件有限公司  
CHAIN HEADWAY MACHINE TOOLS CO., LTD.

CHAIN HEADWAY

CHAIN HEADWAY

# Core Values

## 核心價值

### Innovation

Chain Headway adheres to management innovation, organizational innovation, information innovation, technological innovation, and service innovation, as only constant innovation and effective integration can exert the true benefits of innovation. Chain Headway believes that technology is derived from human nature, and innovation is achieved through evolution, which is the principle of sustainable operation.

### Speed

Time is the biggest cost in competition, and providing the biggest satisfaction for our clients through the pursuit of operational efficiency and speed, is how we remain in the competitive market.

### Trust

Trust is the foundation of enterprises, and Chain Headway maintains a friendly partnership with its staffs, clients, and working partners by abiding by the principle of trust, when marching toward the path of development.

### Responsibility

With enterprise development as its objective, and social evolution as its vision, Chain Headway upholds the responsibility of giving what is taken from the society back to the society, and leads all colleagues to implement green energy and environmental protection, energy saving and carbon reduction, environmental beautification, and social solicitude, in order to co-create a friendly society.

### 創新

正河源秉持著管理創新、組織創新、資訊創新、技術創新、服務創新，唯有不斷創新以及有效的整合才能發揮出創新真正的效益，科技來自人性、創新源自進化乃是永續經營之道。

### 速度

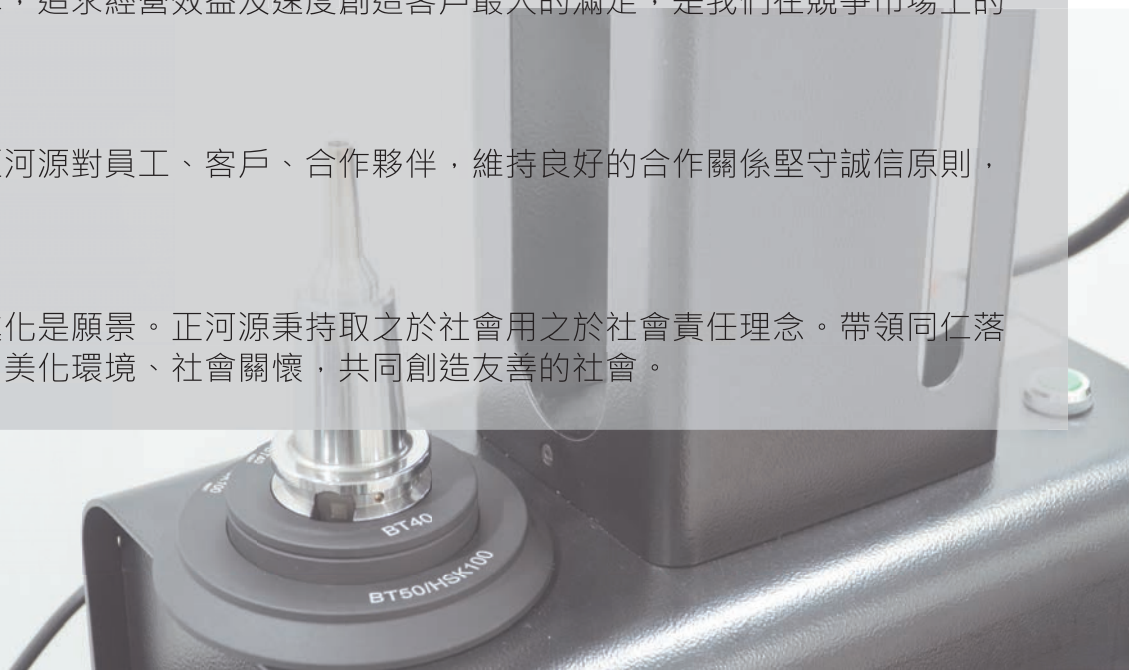
時間是競爭中的最大成本，追求經營效益及速度創造客戶最大的滿足，是我們在競爭市場上的立足之地。

### 誠信

誠信是企業經營基礎，正河源對員工、客戶、合作夥伴，維持良好的合作關係堅守誠信原則，迎向發展之路。

### 責任

企業發展是目標，社會進化是願景。正河源秉持取之於社會用之於社會責任理念。帶領同仁落實綠能環保、節能減碳、美化環境、社會關懷，共同創造友善的社會。





# LM-CM-PHC3160

## Micron Grade Tool Presetter



Video  
影片

### 輕量型 $\mu$ 級校正儀

- Install a dial indicator to detect the deflection of the cutting tool.  
安裝千分錶可針對刀具做偏擺的檢測
- With height gauge, the length of cutting tool can be measured.  
配合高度規可進行刀具之刀長量測
- Conveniently adjust settings for close-tooth cutters, boring cutters and other tools.  
便利針對密齒刀、搪刀等刀具做調整設定
- The pneumatic structure increases the vacuum adsorption function to improve the positioning repeatability of the tool bar.  
氣動結構增加真空吸附功能 改善刀桿定位重複精度



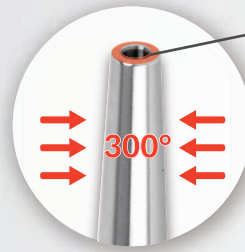
# LM-HM-12400-TC

## Hot-Air Heater

熱風式加熱器

Auto Timer (Stop Automatically Through A Cycle-Heating/Cool Down)  
自動時間控制

For Stainless Steels Tool Holder  
不鏽鋼刀桿專用



Minimum clamping diameter 3mm  
最小夾持孔徑3mm

HOT加熱 70 sec

COOL冷卻 180 sec

Range  $\varnothing 3\text{mm}-\varnothing 12\text{mm}$   
適用範圍  $\varnothing 3\text{mm}-\varnothing 12\text{mm}$



MFS  
Extension of Shrink-Fit Chuck  
熱膨脹延長桿  
- MFS12S slim Type - MFS12R Standard Type  
- MFS12S薄壁型 - MFS12R標準型



C-SFW  
Straight Shank of  
Shrink-Fit Chuck  
不鏽鋼熱膨脹延長桿



HSK-SFW  
Shrink-Fit Chuck  
不鏽鋼熱膨脹刀桿



LM-HM-12400-TC

# MDC

## Manual Deburring & Chamfering Cutter

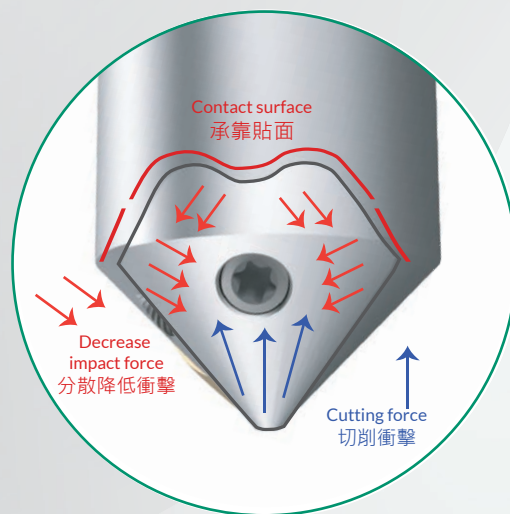
鑽床倒角刀

Chamfer Range  $\varnothing 4.5 - \varnothing 21$   
內孔倒角範圍  $\varnothing 4.5 - \varnothing 21$

Ideal for Drilling Machine, Milling Machine, Conventional Milling Machine,  
Electric/Pneumatic Tool, and Radial Drill Machine  
適用機台：鑽床、銑床、搖臂鑽床、傳統銑床、電(氣)動工具

Shank diameter  $\varnothing 12$   
萬用夾持柄徑 $\varnothing 12$

Good chamfering surface  
刀片可提供出色的倒角表面



Support guide pad completely touch the contact surface of tool to reduce the impact force while chamfering.  
鑽床倒角刀的支撐導塊，加強**承靠貼面數量**、有效降低**倒角下壓**進行的衝擊。



# NHF

## High Feed End Mill Cutter Series

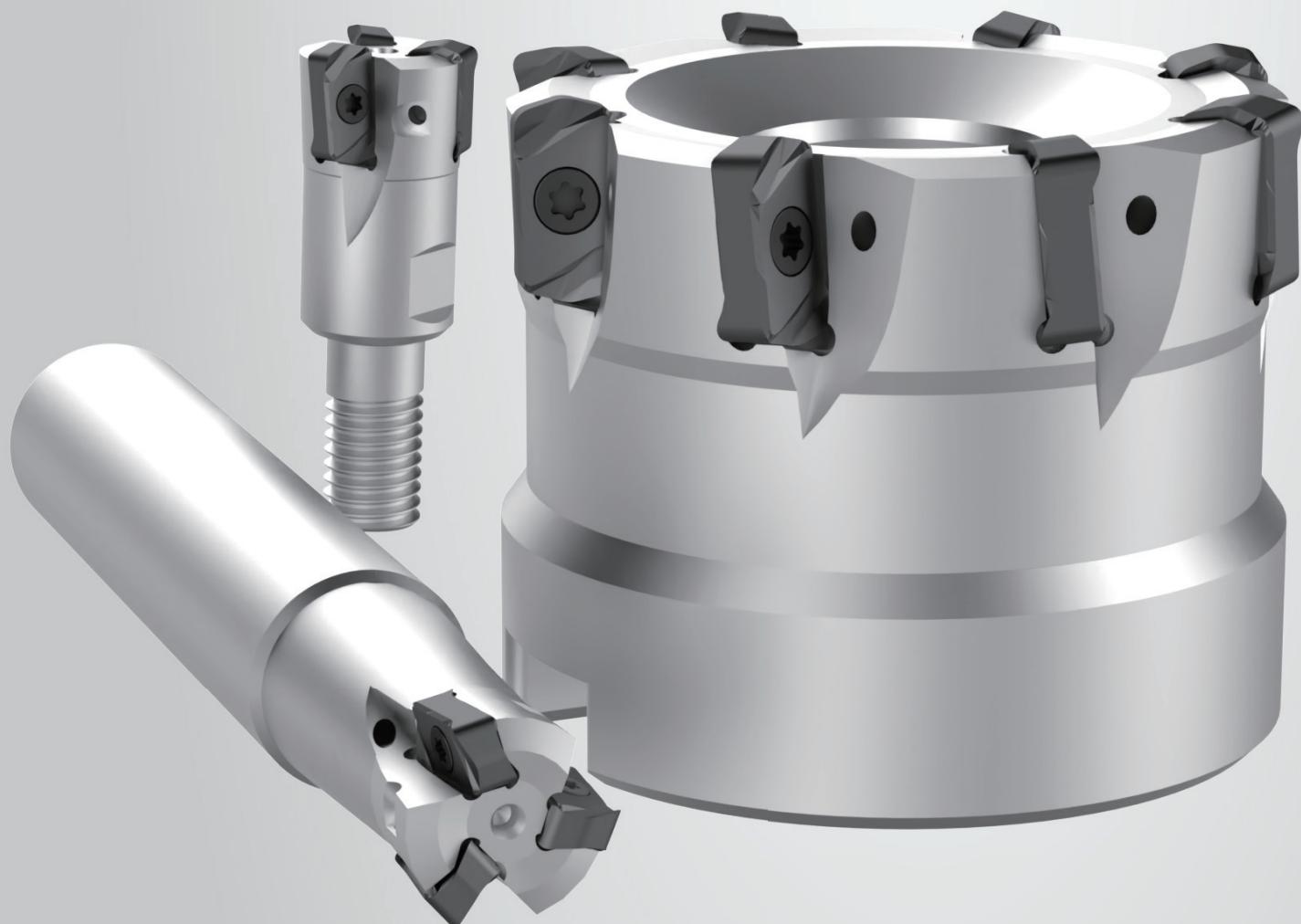
高進給銑刀系列



LNMU0303

High feed  
進給高，工件除料快

Use negative inserts for machining to  
increase the efficiency.  
刀片可雙面使用，提高使用效益





# MSP / CMSP

## Indexable

## Mini-chamfering End Mill

### 小徑倒角刀系列

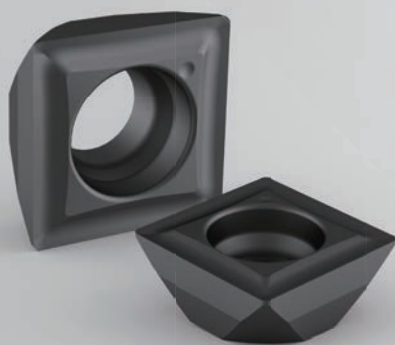
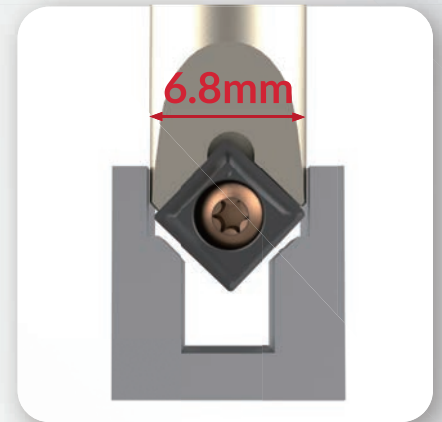


Video  
影片

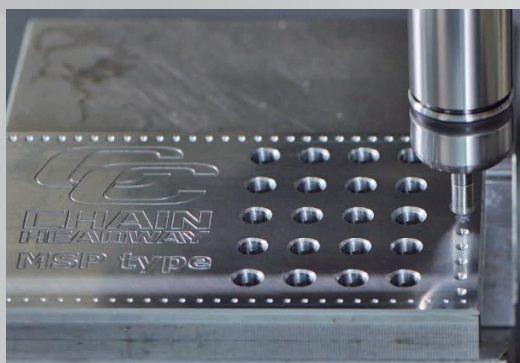
| Small size. Reduce interference.  
尺寸小，減少干涉

| Extended Length with High Rigidity Feature.  
懸伸延長，剛性佳

| Spotting, Chamfering, V-grooving, and  
Carving all in one tool  
定位、倒角、V槽、刻字，一把掌握



**SBGT0502**

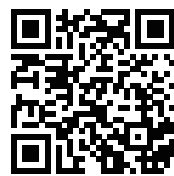


Tungsten  
Carbide Steel Tool  
碳化鎢鋼柄

# NAC45度

## Negative Angle Shell Milling Cutter

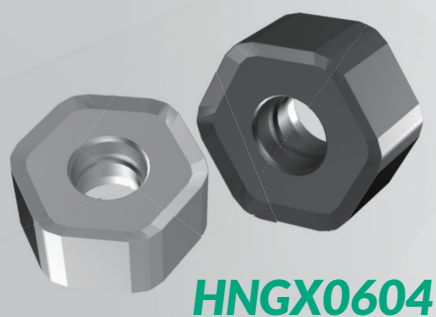
### 負角殼型銑刀



Video  
影片



- | Ideal for semi-finishing  
適合半精加工
- | Better surface roughness  
降低加工表面粗糙度
- | 12 cutting edges, reduce the cost  
12個切削刃口 · 降低成本



**HNGX0604**

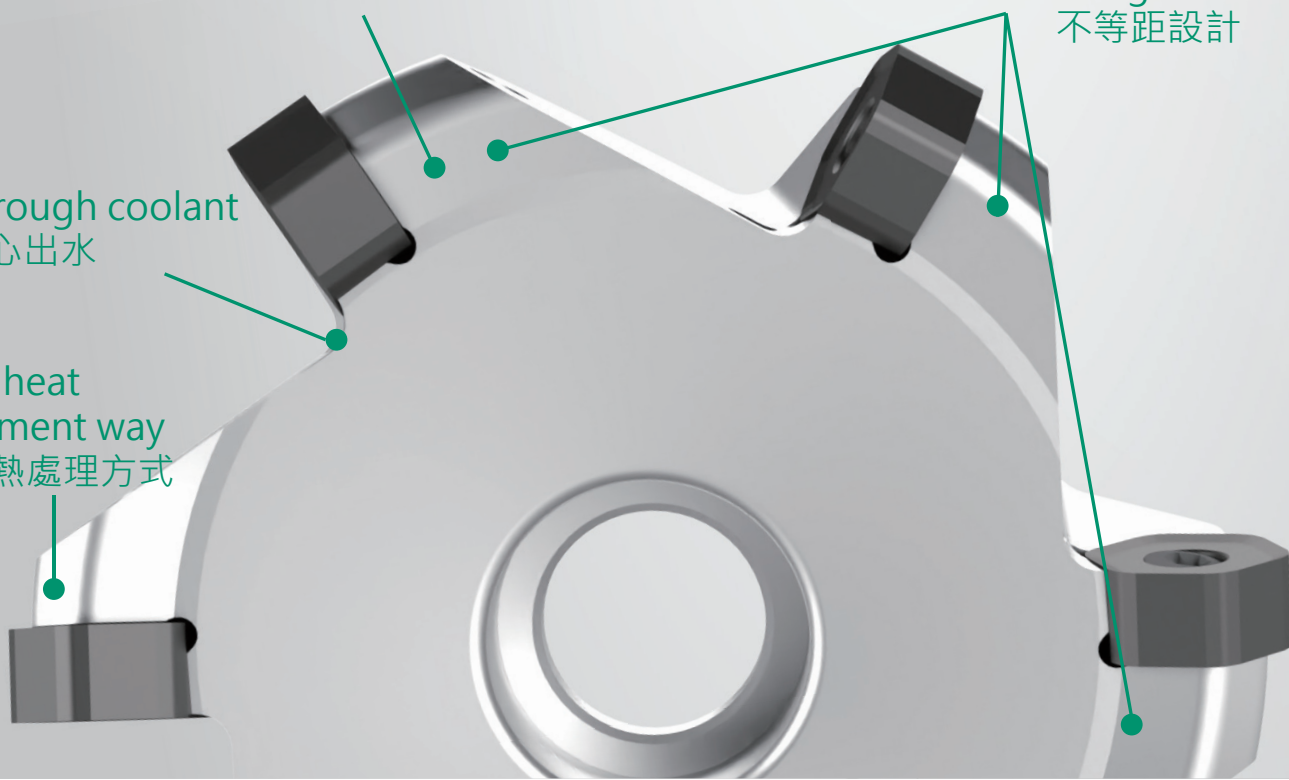
- | T-land cutting edge of each insert  
大正前角槽型結合中等的T型刃口處理
- | Ideal for steel and cast iron  
適合加工P和K

Special surface treatment  
特殊的表面處理

Non equidistant  
design  
不等距設計

Through coolant  
中心出水

New heat  
treatment way  
新型熱處理方式





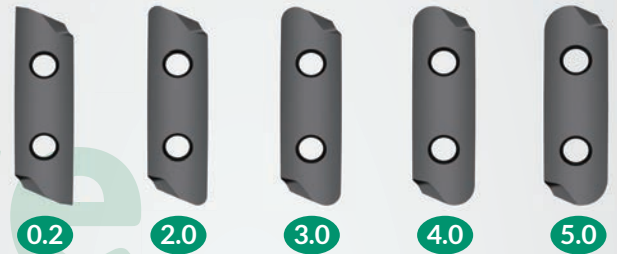
# AECX32T3

## Long Edge Aluminum Cutting Inserts

長刃鋁合金直角銑刀片



37mm



- | Specially designed for aluminum alloy and non-ferrous metal cavity milling and surface milling processing.  
專為鋁合金及非鐵金屬腔體銑削和曲面銑削加工設計。
- | Larger cutting depth is used for both roughing and finishing.  
Max. cutting depth is 30mm.  
可進行大切深·粗精加工切削、最大切深可達30mm。
- | The insert is available with five different nose radius.  
此刀片提供有5種規格刀尖圓弧半徑
- | The insert is fully grinded with high elevation cutting angle design.  
刀片採用高仰角切削角度設計、刀片整體加工採全研磨製程

## Long Edge Type Milling Cutter Series

長刃型刀具系列

- | Designed for high rigidity and anti-vibration for high speed machining.  
為了能高速切削加工使用、銑刀具本體設計高剛性及制震功能設計。
- | Through coolant design makes chip removal easily and increases Feed rate.  
銑刀具設計中心出水設計可使排屑順暢並提高進給率。





正河源股份有限公司  
CHAIN HEADWAY CO.,LTD.

☎ TEL : +886-4-26265252

☎ FAX : +886-4-26267941

📍 地址 : 台灣台中市清水區五權路232號  
No. 232, Wuquan Rd., Qingshui Dist., Taichung City 436, Taiwan

🌐 網址 : [www.chain-headway.com](http://www.chain-headway.com)



Website(中文)



Website(EN)



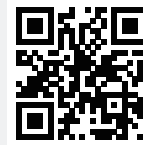
LINE



Wechat



Facebook



YouTube

公司聯絡資訊請帖此處  
Company Information Please Paste Here

其他服務據點訊息透過官網查詢

Other Sales Region Please Review Our Website