



TURNING TOOLS FOR SWISS-TYPE LATHE

走心式車刀應用系列

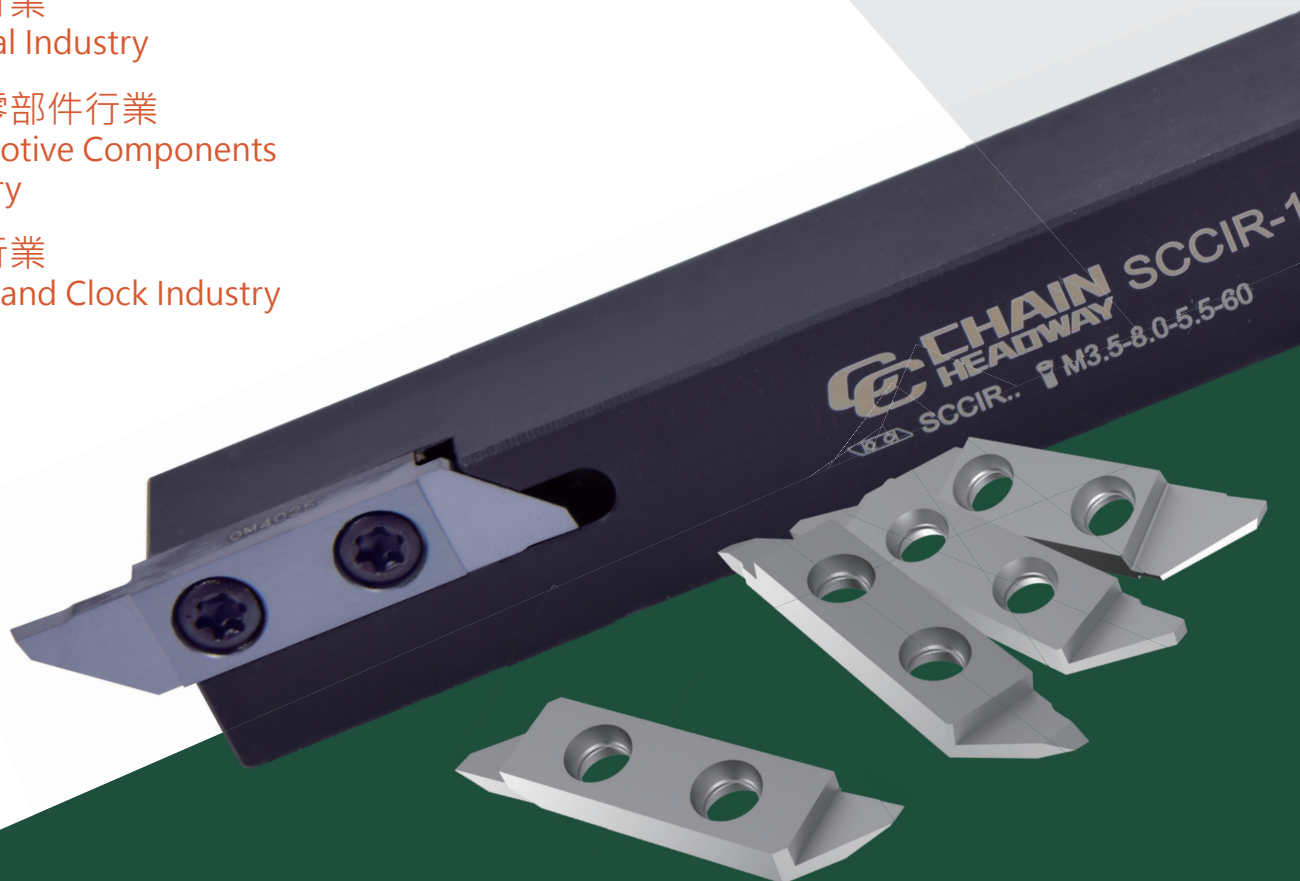
No. 240130001

3C行業
3C Industry

醫療行業
Medical Industry

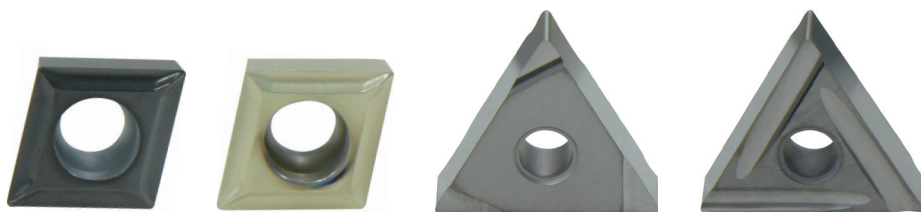
汽車零部件行業
Automotive Components
Industry

鐘錶行業
Watch and Clock Industry



研磨車刀片

GROUND TURNING INSERTS



精密級研磨刀片，用於外圓、端面、內孔、開槽等工序
針對連續及斷續切削，搭配專用刃口設計，通用槽型與
專用槽型的搭配，可適用於不同加工材質與工況。

Precision ground inserts with fine finishing can
process outer circles, end face, inner holes and
grooving.

Depending on the working situation of continuous
or interrupted cutting can choose the chip-breaker
which are divided into general or specialized types
for different workpiece materials.



精度等級記號(mm) Tolerance Class

記號 Symbol	刀尖位置容許公差 Tolerance of Nose Height	厚度容許公差 Tolerance of Thickness	內接圓直徑容許公差 Tolerance of Inscribed Circle
G	±0.025	±0.13	±0.025
M	±0.08 ~ ±0.18	±0.13	±0.05 ~ ±0.13

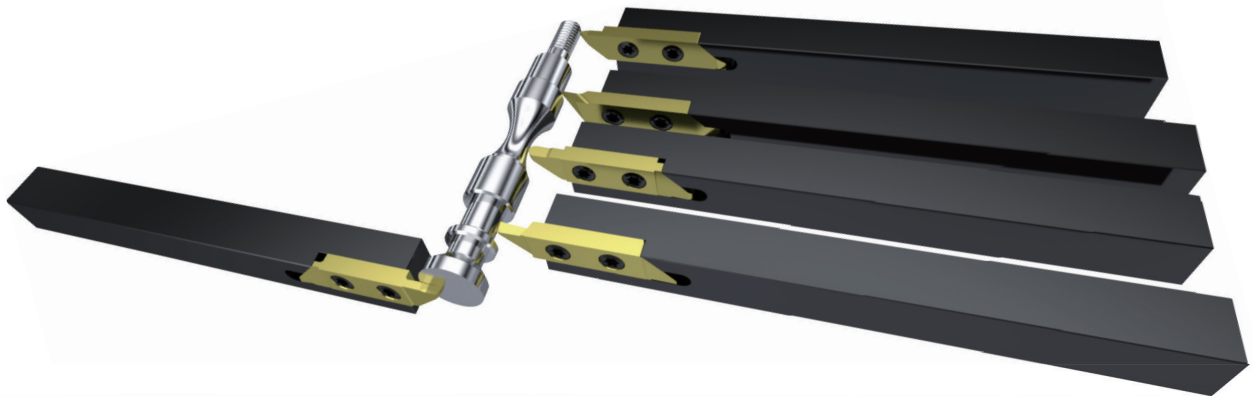
SCCI

走心式車刀系列

FOR SWISS-TYPE LATHE SERIES



走心式車床加工是以主軸加工零件的往復式移動，而刀具不旋轉，透過直線作動進行加工。適合加工小零件產業，例如：3C、醫療、鐘錶汽車零件產業。 Swiss-type lathe machining involves reciprocating movement of the workpiece along the spindle with the turning tool remaining stationary, and machining through linear motion. Suitable for machining small parts, such as the 3C, medical, watch and clock, and automotive parts industries.



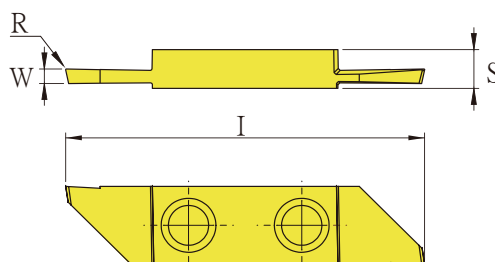
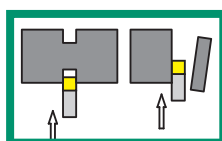
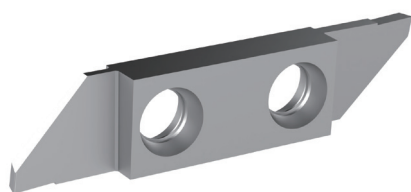
刀片功能 Insert Function	切槽、切斷、後掃、插掃、車牙、圓槽 Grooving, Cut Off, Back Turning, Side Turning, Threading, and Round Grooving.	
生產設備 Production Equipment	日本全自動研磨設備 Japanese Fully Automated Equipment	
檢驗設備 Inspection Equipment	日本影像式檢驗儀器全檢 Japanese Optical Inspection Equipment	
品質精度 Quality Accuracy	±0.015mm	
非標客製 Non-standard Customization	1. 特殊刀形 2. 精度達 ±0.005mm	1. Special Tool 2. Good Accuracy ±0.005mm





走心式車刀片

Threading Inserts For Swiss-Type Lathe

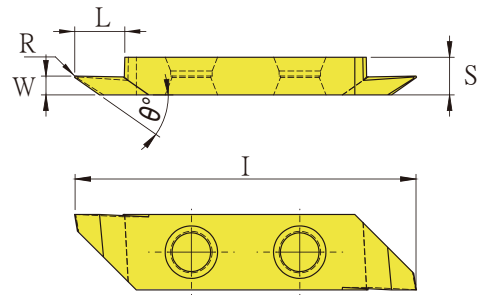
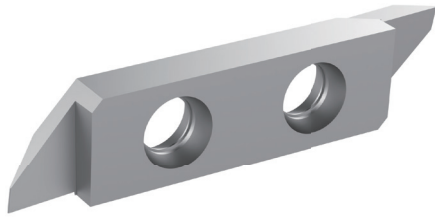


切斷 / 切槽 Cut off / Grooving

規格 Spec.	鍍層超微粒 Layer coated micro grain			超微粒硬質合金 Micro grain carbide alloy			尺寸 (mm)				
	OM4025	OM5035		OM5005			Size				
							W	R	加工 深度 Depth	I	S
NEW SCCIL375-41002	P K	M		N			1	0.2	6	37.5	4.0
NEW SCCIR375-41002	P K	M		N			1	0.2	6	37.5	4.0
NEW SCCIL375-41502	P K	M		N			1.5	0.2	6	37.5	4.0
NEW SCCIR375-41502	P K	M		N			1.5	0.2	6	37.5	4.0
NEW SCCIL375-42002	P K	M		N			2	0.2	8	37.5	4.0
NEW SCCIR375-42002	P K	M		N			2	0.2	8	37.5	4.0
NEW SCCIL375-42502	P K	M		N			2.5	0.2	8	37.5	4.0
NEW SCCIR375-42502	P K	M		N			2.5	0.2	8	37.5	4.0
NEW SCCIL375-43002	P K	M		N			3	0.2	8	37.5	4.0
NEW SCCIR375-43002	P K	M		N			3	0.2	8	37.5	4.0

SCCI 走心式車刀系列

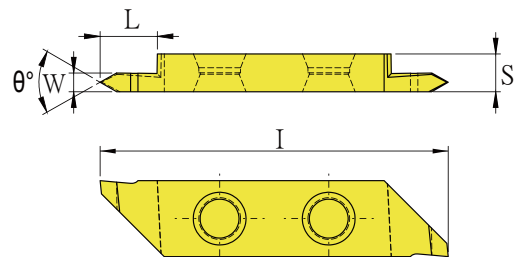
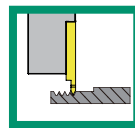
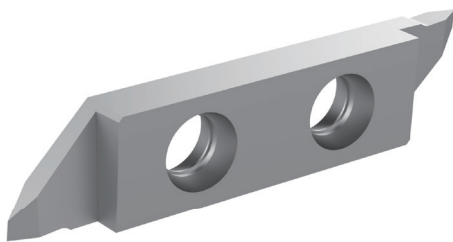
SCCI FOR SWISS-TYPE LATHE SERIES



後掃 Back Turning

規格 Spec.	鍍層超微粒 Layer coated micro grain			超微粒硬質合金 Micro grain carbide alloy			尺寸 (mm)					
	OM4025	OM5035		OM5005			Size					
							W	R	L	θ	I	S
NEW SCCIR375-BL42001-60	P K	M		N			2.0	0.1	5.0	60°	37.5	4.0
NEW SCCIR375-BL42002-60	P K	M		N			2.0	0.2	5.0	60°	37.5	4.0
NEW SCCIR375-BL43001-60	P K	M		N			3.0	0.1	5.0	60°	37.5	4.0
NEW SCCIR375-BL43002-60	P K	M		N			3.0	0.2	5.0	60°	37.5	4.0
NEW SCCIR375-BL44001-60	P K	M		N			4.0	0.1	8.0	60°	37.5	4.0
NEW SCCIR375-BL44002-60	P K	M		N			4.0	0.2	8.0	60°	37.5	4.0
NEW SCCIR375-BL42001-70	P K	M		N			2.0	0.1	5.0	70°	37.5	4.0
NEW SCCIR375-BL42002-70	P K	M		N			2.0	0.2	5.0	70°	37.5	4.0
NEW SCCIR375-BL43001-70	P K	M		N			3.0	0.1	5.0	70°	37.5	4.0
NEW SCCIR375-BL43002-70	P K	M		N			3.0	0.2	5.0	70°	37.5	4.0

- L 左刀: 接單生產
- Left-Hand: Make to Order



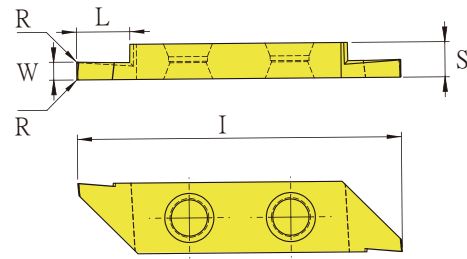
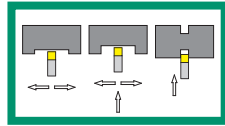
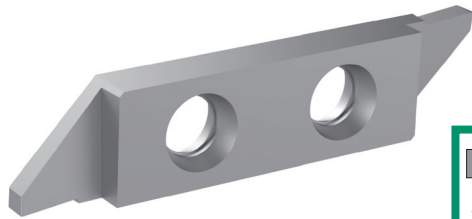
牙刀 Threading

規格 Spec.	鍍層超微粒 Layer coated micro grain			超微粒硬質合金 Micro grain carbide alloy			尺寸 (mm)					
	OM4025	OM5035		OM5005			Size					
							W	R	θ	L	I	S
NEW SCCIR375-T410005-A60	P K	M		N			1.0	0.05	60°	4.0	37.5	4.0
NEW SCCIR375-T42001-A60	P K	M		N			2.0	0.1	60°	6.0	37.5	4.0
NEW SCCIR375-T43002-B60	P K	M		N			3.0	0.2	60°	6.0	37.5	4.0
NEW SCCIR375-T42001-A55	P K	M		N			2.0	0.1	55°	6.0	37.5	4.0
NEW SCCIR375-T43001-A55	P K	M		N			3.0	0.1	55°	6.0	37.5	4.0

- L 左刀: 接單生產
- Left-Hand: Make to Order

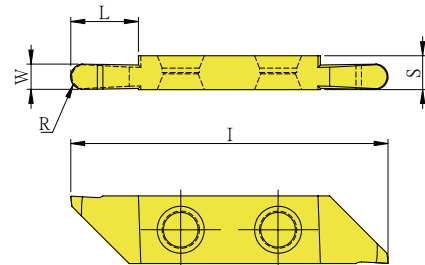
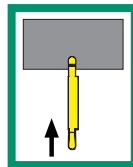
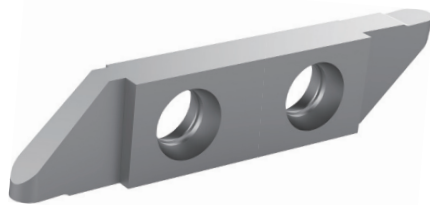
SCCI 走心式車刀系列

SCCI FOR SWISS-TYPE LATHE SERIES



插掃 / 橫移 Side Turning and Face Grooving

規格 Spec.	鍍層超微粒 Layer coated micro grain			超微粒硬質合金 Micro grain carbide alloy			尺寸 (mm)				
	OM4025	OM5035		OM5005			Size				
							W	R	L	I	S
NEW SCCIL375-AD41002	P K	M		N			1.0	0.2	2.5	37.5	4.0
NEW SCCIR375-AD41002	P K	M		N			1.0	0.2	2.5	37.5	4.0
NEW SCCIL375-AD41502	P K	M		N			1.5	0.2	3.5	37.5	4.0
NEW SCCIR375-AD41502	P K	M		N			1.5	0.2	3.5	37.5	4.0
NEW SCCIL375-AD42002	P K	M		N			2.0	0.2	5.0	37.5	4.0
NEW SCCIR375-AD42002	P K	M		N			2.0	0.2	5.0	37.5	4.0
NEW SCCIL375-AD43002	P K	M		N			3.0	0.2	8.0	37.5	4.0
NEW SCCIR375-AD43002	P K	M		N			3.0	0.2	8.0	37.5	4.0



圓槽 Round Grooving

規格 Spec.	鍍層超微粒 Layer coated micro grain			超微粒硬質合金 Micro grain carbide alloy			尺寸 (mm)				
	OM5035			OM5005			Size				
							W	R	L	I	S
NEW SCCIR375-R410050	M			N			1.0	0.5	2.5	37.5	4.0
NEW SCCIR375-R415075	M			N			1.5	0.75	3.5	37.5	4.0
NEW SCCIR375-R420100	M			N			2.0	1.0	5.0	37.5	4.0
NEW SCCIR375-R425125	M			N			2.5	1.25	6.0	37.5	4.0
NEW SCCIR375-R430150	M			N			3.0	1.5	8.0	37.5	4.0

SCCI 走心式車刀系列

SCCI FOR SWISS-TYPE LATHE SERIES

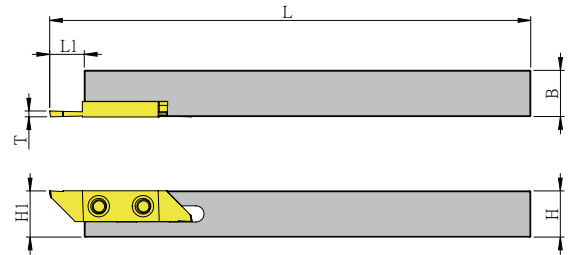
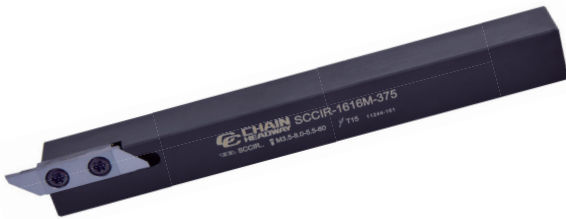
SCCI_375 切削條件數據表 Cutting Parameter

被加工材質 Machining Materials	車削 / 開槽 Turning/Grooving					掃刀 Plunging			
	材質 Grade	切削速度 Speed Vc(m/min)	每刃進給 Feed		材質 Grade	切削速度 Speed Vc(m/min)	每刃進給 Feed		
			hm (mm)				hm (mm)		
			開槽 Grooving	橫向進給 Lateral Feed			開槽 Grooving	橫向進給 Lateral Feed	
P 低合金鋼 Low-Alloy Steels 合金鋼 Alloyed Steels	OM4025	100-190 90-140	0.01-0.03 0.01-0.03	0.02-0.15 0.02-0.15	OM4025	80-180 80-140	0.02 0.02	0.02-0.07 0.02-0.07	
M 不鏽鋼 Stainless Steels	OM5035	70-140	0.01-0.02	0.01-0.1	OM4035	40-130	0.02	0.02-0.05	
K 鑄鐵 Cast Iron	OM4025	90-200	0.01-0.02	0.01-0.15	OM4025	90-200	0.02	0.02-0.05	
N 非鐵合金 Non-Ferrous Metals	OM5005	200-500	0.01-0.05	0.02-0.10	OM5005	100-200	0.02	0.02-0.10	



SCCI 走心式車刀架

SCCI External Turning Tool For Swiss-Type Lathe

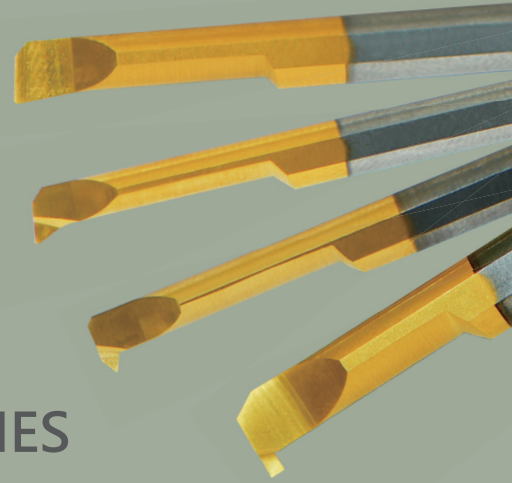


規格 Spec.	B	H (H ₁)	L	L ₁	T
SCCIR-1010K-375	10	10	125	9	4
SCCIR-1212K-375	12	12	125	9	4
SCCIR-1212M-375	12	12	150	9	4
SCCIR-1616M-375	16	16	150	9	4
SCCIR-2020K-375	20	20	125	9	4

MT

碳化鎢鋼微小徑車刀系列

CARBIDE MICRO BORING BARS SERIES

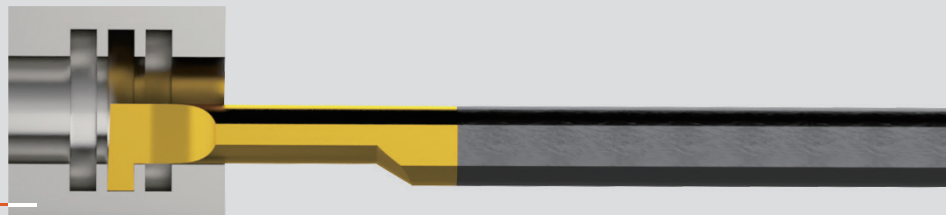


微小徑車刀採用全鎢鋼材質，可有效抑制震動，加上塗層可有效提升壽命。微小徑設計有利於狹小孔徑空間工件之切槽、仿形、搪孔、螺紋等加工需求。

The carbide micro boring bars are made of tungsten steel material, effectively suppressing vibrations with a coating to enhance their lifespan. The micro-sized design is advantageous for slotting, profiling, boring, and threading in small and narrow-diameter workpieces.

切槽

GROOVING



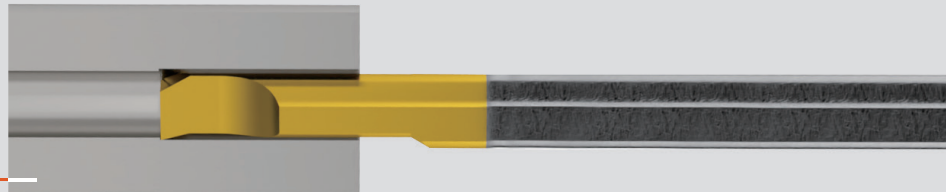
仿形

PROFILE TURNING



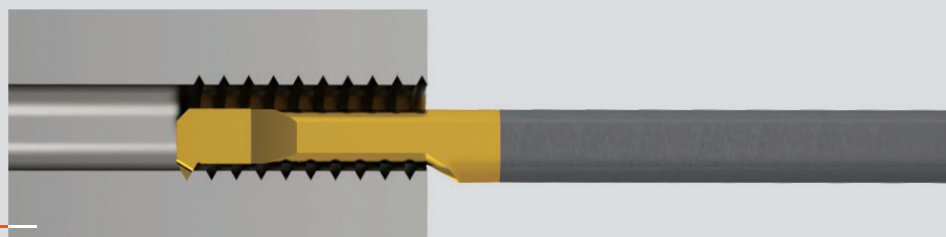
搪孔

POSITIVE BORING



螺紋

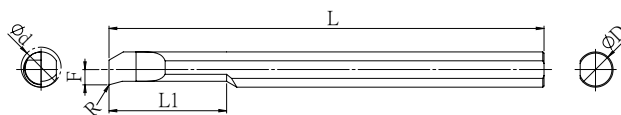
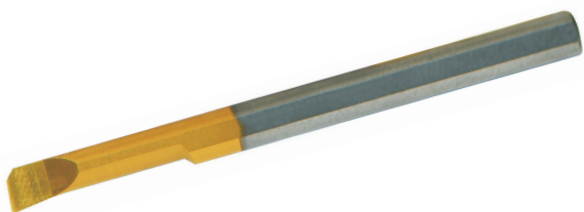
THREADING





MT 碳化鎢鋼微小徑車刀 - 搪孔

MT Carbide Micro Boring Bars - Positive Boring



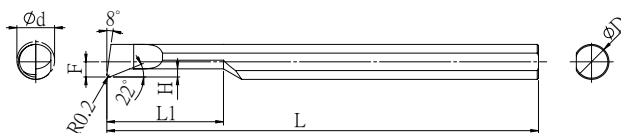
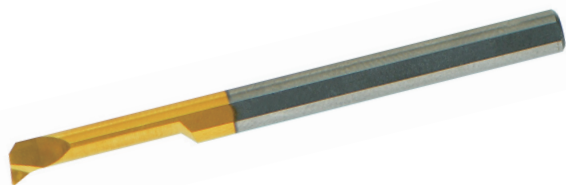
規格 Spec.	D	L	L ₁	R	最小加工徑 Ø d min	F
MT21-C3-PBR10-005	3	37	10	0.05	3.1	1.3
MT21-C3-PBR10-020	3	37	10	0.2	3.1	1.3
MT21-C4-PBR15-020	4	50	15	0.2	4.1	1.7
MT21-C5-PBR22-020	5	50	22	0.2	5.1	2.1
MT21-C6-PBR22-020	6	50	22	0.2	6.1	2.8

- 搭配 SH 小徑套筒
- Compatible with SH Mini Collet Sleeve



MT 碳化鎢鋼微小徑車刀 - 仿形

MT Carbide Micro Boring Bars - Profile Turning



規格 Spec.	D	L	L ₁	R	H	最小加工徑 Ø d min	F
MT21-C3-PTR10-020	3	37	10	0.2	0.7	3.1	1.3
MT21-C4-PTR15-020	4	50	15	0.2	0.8	4.1	1.7
MT21-C5-PTR15-020	5	50	15	0.2	1.2	5.1	2.1
MT21-C6-PTR22-020	6	50	22	0.2	1.4	6.1	2.8

- 搭配 SH 小徑套筒
- Compatible with SH Mini Collet Sleeve

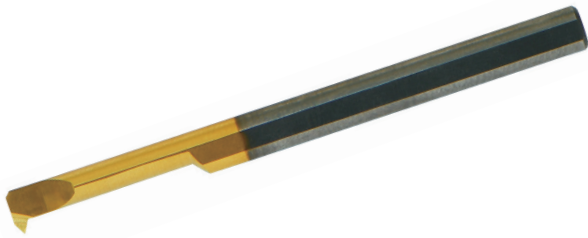
MT 碳化鎢鋼微小徑車刀系列

MT CARBIDE MICRO BORING BARS SERIES



MT 碳化鎢鋼微小徑車刀 - 螺紋

MT Carbide Micro Boring Bars - Threading



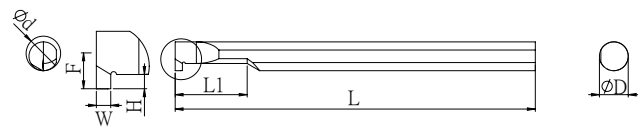
規格 Spec.	D	L	L ₁	Pitch	A	最小加工徑 Ø d min	F
MT21-C3-TR10-60	3	37	10	0.8-1.0	60	3.1	1.4
MT21-C4-TR15-60	4	50	15	0.8-1.0	60	4.1	1.8
MT21-C5-TR15-60	5	50	15	1.0-1.25	60	5.1	2.3
MT21-C6-TR15-60	6	50	15	0.05-1.5	60	6.1	2.6

- 搭配 SH 小徑套筒
- Compatible with SH Mini Collet Sleeve



MT 碳化鎢鋼微小徑車刀 - 切槽

MT Carbide Micro Boring Bars - Grooving



規格 Spec.	D	L	L ₁	W	H	最小加工徑 Ø d min	F
MT21-C4-GR10-100	4	50	10	1.00	1.0	4.1	1.7
MT21-C4-GR15-150	4	50	10	1.50	1.0	4.1	1.7
MT21-C5-GR15-100	5	50	15	1.00	1.2	5.1	2.3
MT21-C5-GR15-150	5	50	15	1.50	1.2	5.1	2.3
MT21-C5-GR15-200	5	50	15	2.00	1.2	5.1	2.3
MT21-C6-GR15-100	6	50	15	1.00	1.4	6.1	2.8
MT21-C6-GR15-150	6	50	15	1.50	2.0	6.1	2.8
MT21-C6-GR15-200	6	50	15	2.00	2.0	8.1	3.8
MT21-C8-GR22-150	8	60	22	1.50	2.0	8.1	3.8
MT21-C8-GR22-200	8	60	22	2.00	2.5	8.1	3.8
MT21-C8-GR22-250	8	60	22	2.50	2.5	8.1	3.8

- 搭配 SH 小徑套筒
- Compatible with SH Mini Collet Sleeve

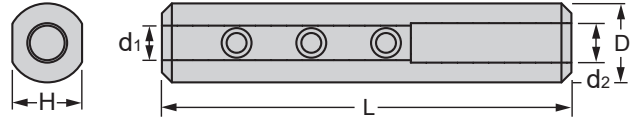
MT 碳化鎢鋼微小徑車刀系列

MT CARBIDE MICRO BORING BARS SERIES



SH 小徑套筒

SH Mini Collet Sleeve



規格 Spec.	L	D	d ₁	H	扳手 Wrench	重量 (KGS) Weight
SH-0316-100	100	16	3	14	PL2.0	-
SH-0416-100	100	16	4	14	PL2.0	0.15
SH-0516-100	100	16	5	14	PL2.5	0.15
SH-0616-100	100	16	6	14	PL3.0	-
SH-0716-100	100	16	7	14	PL3.0	0.13
SH-0816-100	100	16	8	15	PL3.0	-
SH-0320-100	100	20	3	15	PL2.0	-
SH-0420-100	100	20	4	15	PL2.0	-
SH-0520-100	100	20	5	15	PL2.5	-
SH-0620-100	100	20	6	15	PL3.0	-
SH-0820-100	100	20	8	18.5	PL3.0	-
SH-0322-100	100	22	3	18.5	PL2.0	-
SH-0422-100	100	22	4	18.5	PL2.0	-
SH-0522-100	100	22	5	18.5	PL2.5	-
SH-0622-100	100	22	6	18.5	PL3.0	-
SH-0822-100	100	22	8	18.5	PL3.0	-

自動車床夾頭系統

Combination of Collet Chuck For Automatic Lathe

刀桿
Holder

筒夾
Collet

螺帽
Nut

扳手
Wrench



小徑 / 直柄 ER 夾頭柄(M型)
ER Collet Chuck For Automatic Lathe
(Straight Shank)

C20-ER16M-60

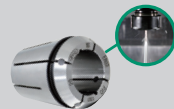


DE直柄兩端ER自動車床夾頭柄
ER Collet Chuck For Automatic Lathe
(Double-Ended Straight Shank)

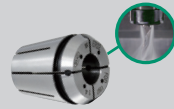
DE20-ER16M-75



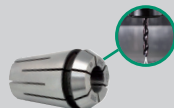
ER彈性筒夾(UP級)
ER Collet (UP Grade)



ER-FID出水筒夾
ER-FID Coolant Collet



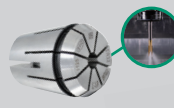
ER-FOD出水筒夾
ER-FOD Coolant Collet



ER-ES斜槽止水筒夾
ER-ES Steel Sealed Collet



ER鋼性攻牙筒夾
ER-TC Rigid Tap Collet



ER鋼性攻牙止水筒夾
ER-TCO Rigid Tap Sealed Collet



ER-M型螺帽
ER-M Nut

尺寸規格Spec.

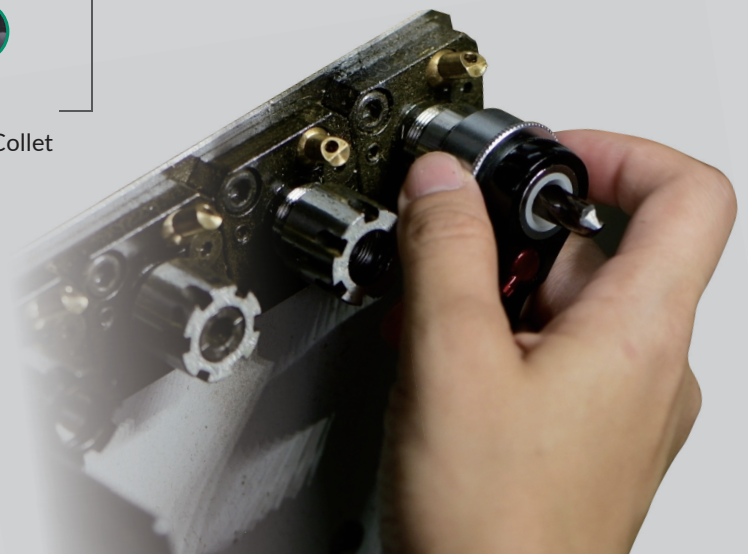
ER8.ER11.ER16
ER20.ER25



ER-M標準扳手
ER-M Wrench



ER-M-RW 型棘輪扳手
ER-M-RW TYPE Ratchet Wrench





正河源股份有限公司

CHAIN HEADWAY CO., LTD.

☎ 電話 TEL /
+886-4-26265252

☎ 傳真 FAX /
+886-4-26267941

📍 地址 Address /
436037台灣台中市清水區五權路232號
No. 232, Wuquan Rd., Qingshui Dist., Taichung City 436037, Taiwan

🌐 網址 Website /
www.chain-headway.com



公司官網(中文)



Website(EN)



LINE



WeChat



Facebook



YouTube